

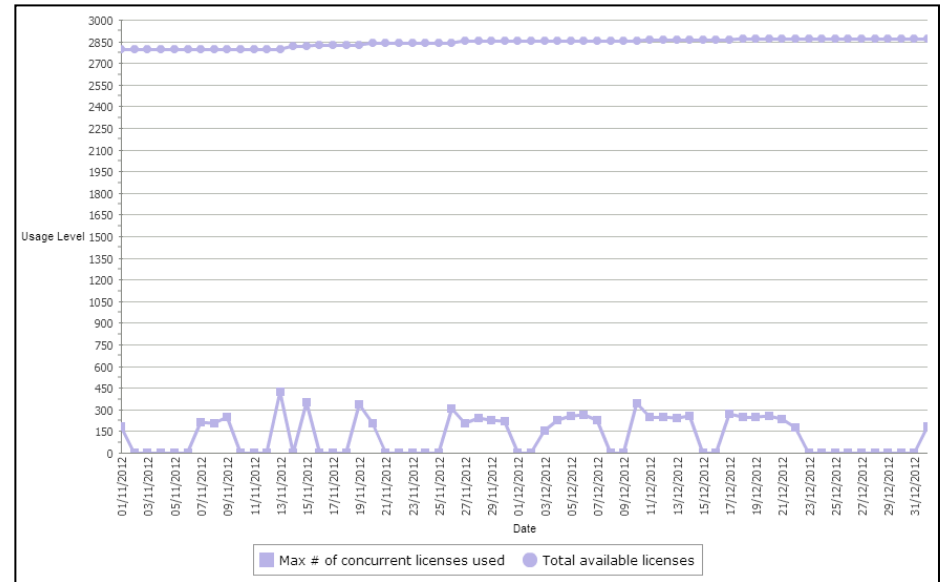
MD iMAP UPDATES

JANUARY 16, 2013



ELA LICENSE UTILIZATION

- Maximum number of concurrent license usage to date: 424 (~14%)
- Number of unique users: 352
- Current participating agencies: DBED, DHCD, DHMH, DNR, DoIT, MDA, MDE, MDP, MDTA, MLIS, MTA & SHA



SUBCOMMITTEE RESTRUCTURING

Application Subcommittee

- Kaushik Dutta – kdutta1@mdta.state.md.us
- Jason Keppler – jason.keppler@maryland.gov

Data & Resources Subcommittee

- Lisa Lowe – lisa.lowe@maryland.gov

Outreach Subcommittee

- Mark Helmken – mhelmken@towson.edu
- Scott Jeffrey – sjeffrey@ccbcmd.edu
- Julia Fischer – julia.fischer@maryland.gov

SUBCOMMITTEE RESTRUCTURING

- Dissolved Security Subcommittee into Application Subcommittee
- Actively recruiting members to participate in the Data & Resources Subcommittee

<http://imap.maryland.gov/>

twitter  @MDiMap

APPLICATION SUBCOMMITTEE

Application Template Updates

- Adjusting layout to more closely adhere to State standards
- Updating base code to take advantage of new released version of ArcGIS API for JavaScript
- Moving forward with development of Smart, Green and Growing applications first
- Integrating with ArcGIS Server 10.1 services

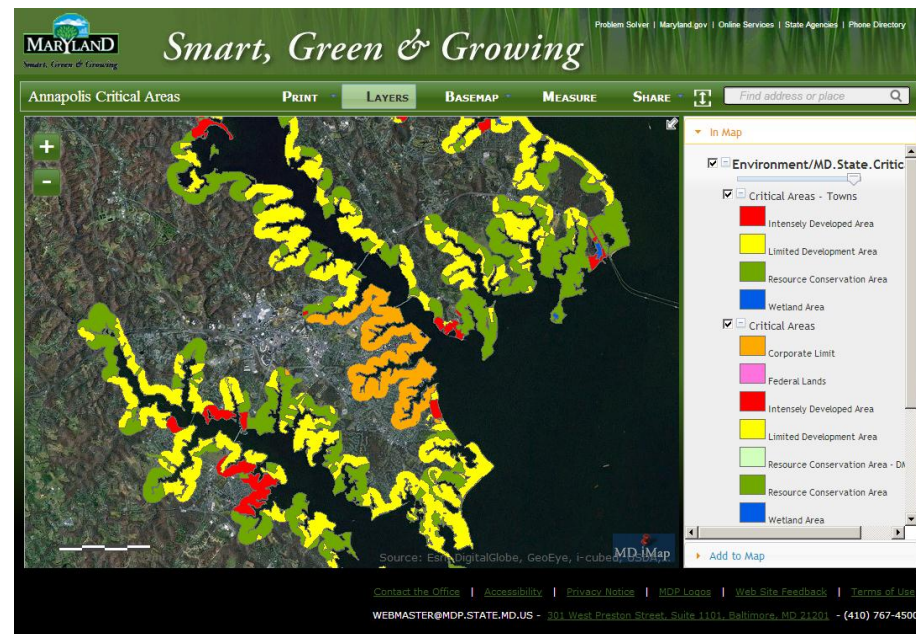
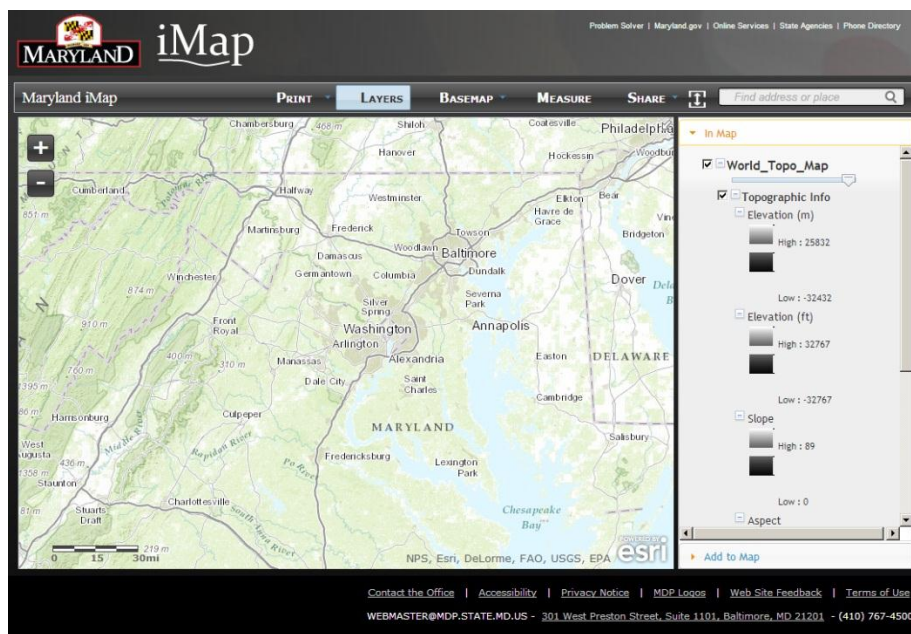
<http://imap.maryland.gov/>

twitter  @MDiMap

APPLICATION SUBCOMMITTEE

Standard Template

Template modified for
DNR website



<http://imap.maryland.gov/>

twitter @MDiMap

APPLICATION SUBCOMMITTEE

Geocortex Demo (<http://www.geocortex.com>)

- Product by Latitude Geographics
- Suite of tools supplemental to ArcGIS Server
- Allows for deployment of applications using available services (Silverlight, HTML5, Flex)
- Provides workflow component which facilitates inclusion or creation of geoprocessing tools to the application

<http://imap.maryland.gov/>

 @MDiMap

DATA & RESOURCES SUBCOMMITTEE

Open Data/Socrata

- CGIS developed tool to transfer shapefiles from MD iMap to Socrata
- Expect to research creation of Socrata data into services

The screenshot shows the MARYLAND STATESTAT website. The header includes the MARYLAND logo and the text "GOVERNOR O'MALLEY'S STATESTAT". Navigation links for "Problem Solver", "Maryland.gov", "Online Services", "State Agencies", and "Phone Directory" are visible. A search bar is located at the top left. Below it, there are sections for "View Types" (Datasets, External Datasets, Files and Documents, Filtered Views, Charts, Maps, Calendars, Forms) and "Categories" (Administrative, Budget, Business and Economy, Education, Energy and Environment). A "Topics" section lists various subjects like childhood hunger, dpscs, and public safety. A "Within Geographical Area" section is also present. The main content area is titled "Search & Browse Datasets and Views" and displays a list of datasets with columns for Name, Popularity, and Type. The list includes items such as "Students Eligible for Free and Reduced Meals by County (2010-2011 School Year)", "Participation in Free and Reduced Meal Programs", "Renewable Energy Generation", "Maryland Solar Projects", "GDU Goal 3: Skills, Key Metric A", "Maryland Port Administration General Cargo", "Greenhouse Gas Emissions in Maryland", "Maryland Annual Vehicle Miles of Travel", "Maryland Counties", and "Acute Care Hospitals with Live VPN Connections". A pagination bar at the bottom indicates "Showing 10 of 100". A footer contains links for "Contact the Office", "Accessibility", "Privacy Notice", "Terms of Use", and "Powered by Socrata".

<http://imap.maryland.gov/>

twitter @MDiMap

DATA & RESOURCES SUBCOMMITTEE

Data Restructuring

- Migrating map services to ArcGIS 10.1
- Simultaneously reorganizing data and map services
 - Remove duplicate services
 - Examine and rectify data gaps
- Projection change to: Web Mercator
- Reorganizing locations of hardware, including potential to utilize Cloud services

DATA & RESOURCES SUBCOMMITTEE

- Adjust current ISO categories to better accommodate existing and future data
 - Administrative Boundaries
 - Agriculture
 - Biota
 - Business and Economy
 - Demographic
 - Elevation
 - Environment
 - Geoscientific Information
 - Health
 - Historic
 - Hydrology
 - Imagery Basemaps EarthCover
 - Intelligence Military
 - Location
 - Planning Cadastre
 - Public Safety
 - Society
 - Structure
 - Transportation
 - Utilities Communication
 - Weather

DATA & RESOURCES SUBCOMMITTEE

Cascading Geocoder

- CGIS actively working on building geocoder with multiple components
 - MDPV Address Points
 - Statewide Centerlines
 - ZIP Codes
 - Municipalities
 - Intersections
 - Highway Exits
 - Mile Markers
 - Community Anchor Institutions
 - Points of Interest
 - Place Names
- Actively collecting data to populate geocoders
- Next steps: build geocoder and conduct testing

EXECUTIVE COMMITTEE MEETINGS

- Wednesday, January 30th (9:30 a.m. – 2:30p.m.)
- MDOT: Harry Hughes Conference Room
- Topics To Be Covered:
 - Executive Discussion
 - Application Template
 - ELA License Usage Statistics
 - Statewide Addressing Project
 - Statewide Situational Awareness
 - MD iMap System Upgrade
 - MD iMap Data Migration

<http://imap.maryland.gov/>

 @MDiMap

TECHNICAL COMMITTEE MEETINGS

- Tuesday, February 5th (1 – 3p.m.) @ MDE
(1800 Washington Blvd., Baltimore, MD 21230)
- Call-in Number: 410-537-4281 or WebEx
- Participation: Open & Welcome
- Meetings: **1st Tuesdays of the Month**
- Contact: Julia Fischer (julia.fischer@maryland.gov)
or Frank Siano (fsiano@mde.state.md.us)

<http://imap.maryland.gov/>

 @MDiMap