

MD iMap Updates – January 2012

<http://www.imap.maryland.gov/portal/>

 MDiMap



MD iMap Updates – January 2012

- New MD iMap URL for services access
- WFS-Enabled Map Services
- Map Service News
- MD iMap Stats
- Additional Items
- Next Technical Committee Meeting

<http://www.imap.maryland.gov/portal/>

MD iMap Updates – January 2012

- New MD iMap URL for services access
 - ◇ mdimap.towson.edu
 - ◇ mdimap.us
- ◇ Please start the migration of your existing usage and future usage to mdimap.us
- ◇ mdimap.towson.edu will continue to exist until further notice



MD iMap Updates – January 2012

- WFS-Enabled Map Services
 - ◇ Allows for data in map service to be downloaded
 - ◇ Currently requesting data owners to WFS-enable map services

 mdimap.us/ArcGIS/rest/services/Boundaries/MD.State.CommunityLegacyAreas/MapServer

ArcGIS Services Directory

[Home](#) > [Boundaries](#) > [MD.State.CommunityLegacyAreas \(MapServer\)](#)

Boundaries/MD.State.CommunityLegacyAreas (MapServer)

View In: [ArcMap](#) [ArcGIS Explorer](#) [ArcGIS JavaScript](#) [Google Earth](#) [ArcGIS.com Map](#)



Supported Interfaces: [REST](#) [SOAP](#) [WMS](#) [WFS](#)

- Find WFS availability at bottom of service info page

MD iMap Updates – January 2012

- Map Service News

- ◇ REST descriptions of services completed

Transportation/MD.State.OSPREYTransportation (MapServer)

View In: [ArcMap](#) [ArcGIS Explorer](#) [ArcGIS JavaScript](#) [Google Earth](#) [ArcGIS.com Map](#)

View Footprint In: [Google Earth](#)

Service Description: This map contains transportation features such as park and ride locations, toll plazas, and transit. This data is maintained, in part, by the Maryland State Highway Administration, The Maryland Transit Administration, The Maryland Transportation Authority, and the Federal Railroad Administration.

Map Name: Layers

[Legend](#)

[All Layers and Tables](#)

Legend (Transportation/MD.State.OSPREYTransportation)

Road Centerlines (0)



Park And Ride Locations (1)



Toll Plaza (2)



Layer: Park And Ride Locations (ID: 1)

Display Field:

Type: Feature Layer

Geometry Type: esriGeometryPoint

Description: This data layer represents park and ride locati

Definition Expression:

Copyright Text:

Min. Scale: 0

Max. Scale: 0

Default Visibility: False

Extent:

XMin: 235493.307006459
YMin: 52206.4227773994
XMax: 565801.77870646
YMax: 227646.608577401
Spatial Reference: 26985

Has Attachments: False

HTML Popup Type: esriServerHTMLPopupTypeAsHTMLText

Drawing Info:

Renderer:
Simple Renderer:
Symbol:
Picture Marker Symbol:

Label:
Description:
Transparency: 0
Labeling Info: N/A

MD iMap Updates – January 2012

- Map Service News

- ◇ Updated Services:

- Biota/MD.State.LivingResources*

- Boundaries/MD.State.CongressionalDistricts.2011*

- Society/MD.State.UnemploymentRates*

- Environment/MD.State.MALPF*

- Health/MD.State.HealthITStatus*

- ◇ Updated Applications:

- MD Shorelines*



- State Stat*



MD iMap Updates – January 2012

- Map Service News

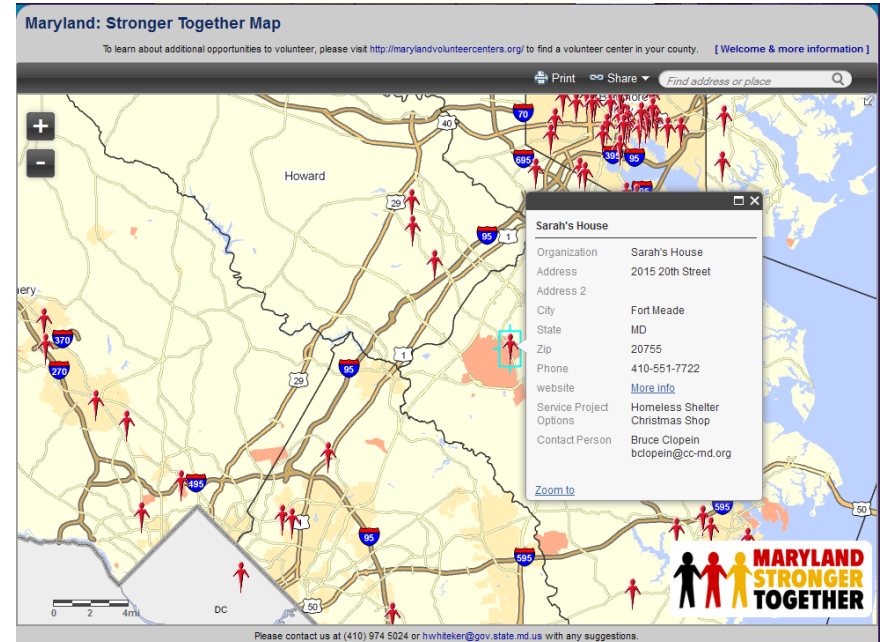
- ◇ New Services:

- Transportation/MD.State.TransitRoutesAndStops*

- ◇ New Applications:

- Maryland :
Stronger Together Map*

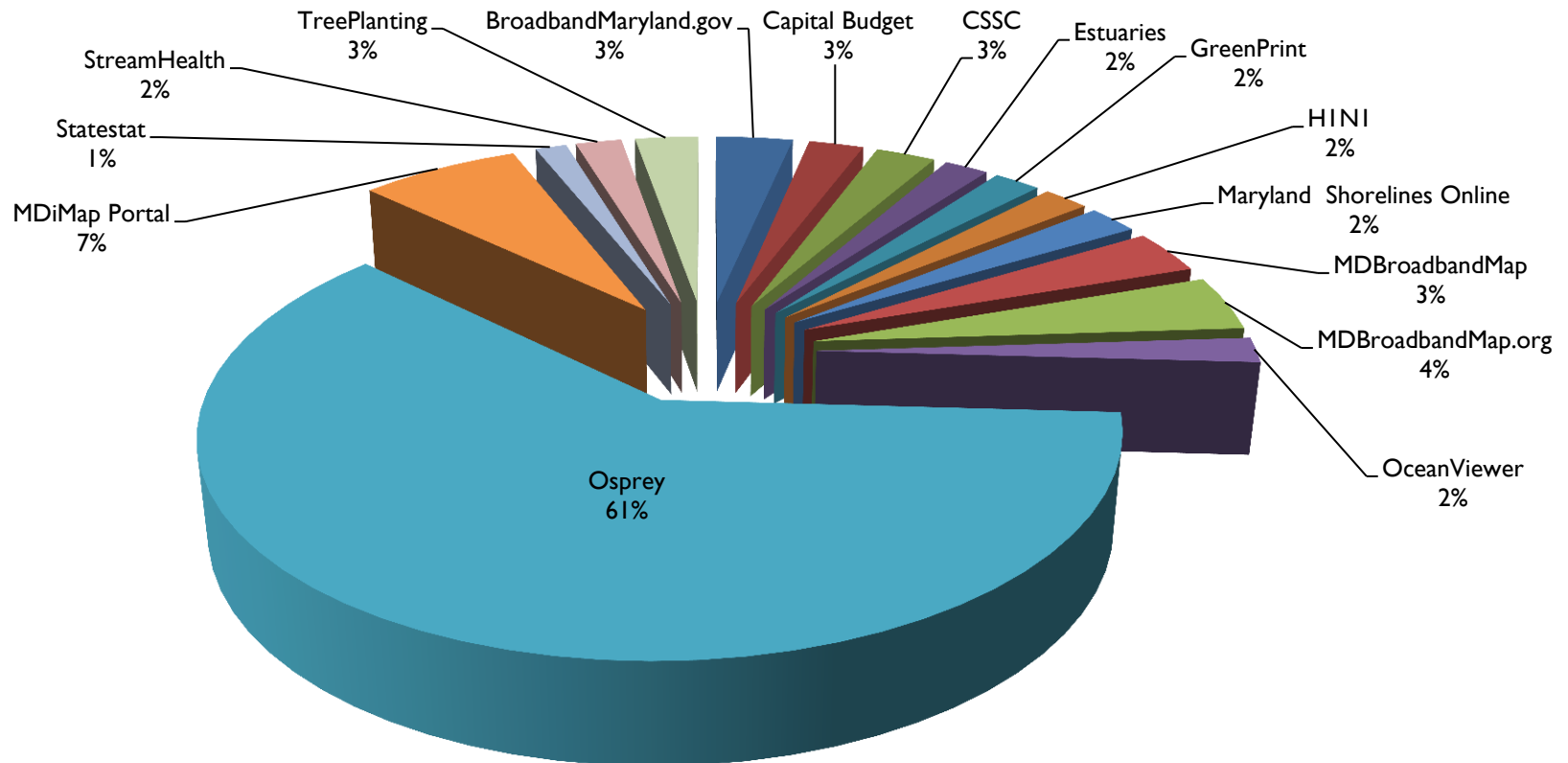
- <http://www.governor.maryland.gov/strongerMap.asp>



MD iMap Updates – January 2012

- MD iMap Stats

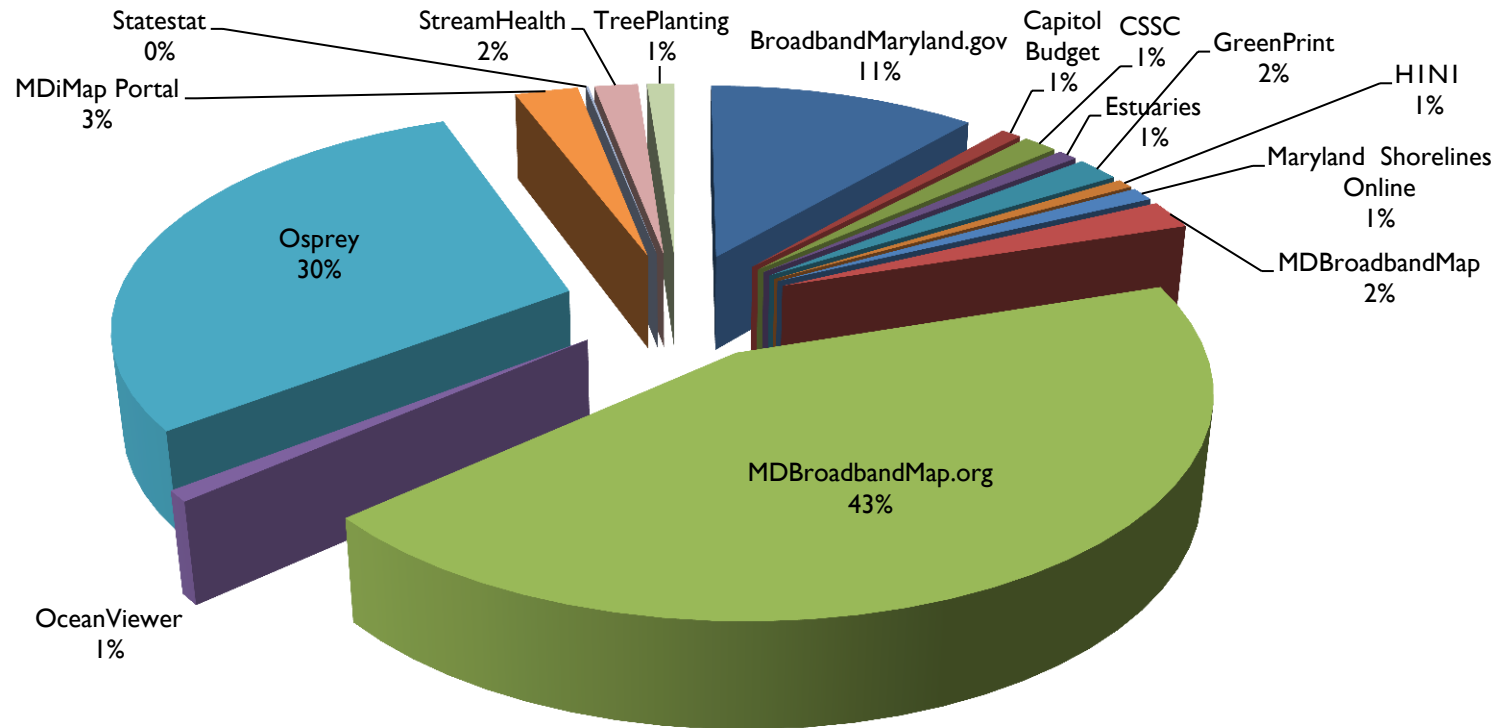
- ◊ Total # of Unique Visits (Annual Total)



MD iMap Updates – January 2012

- MD iMap Stats

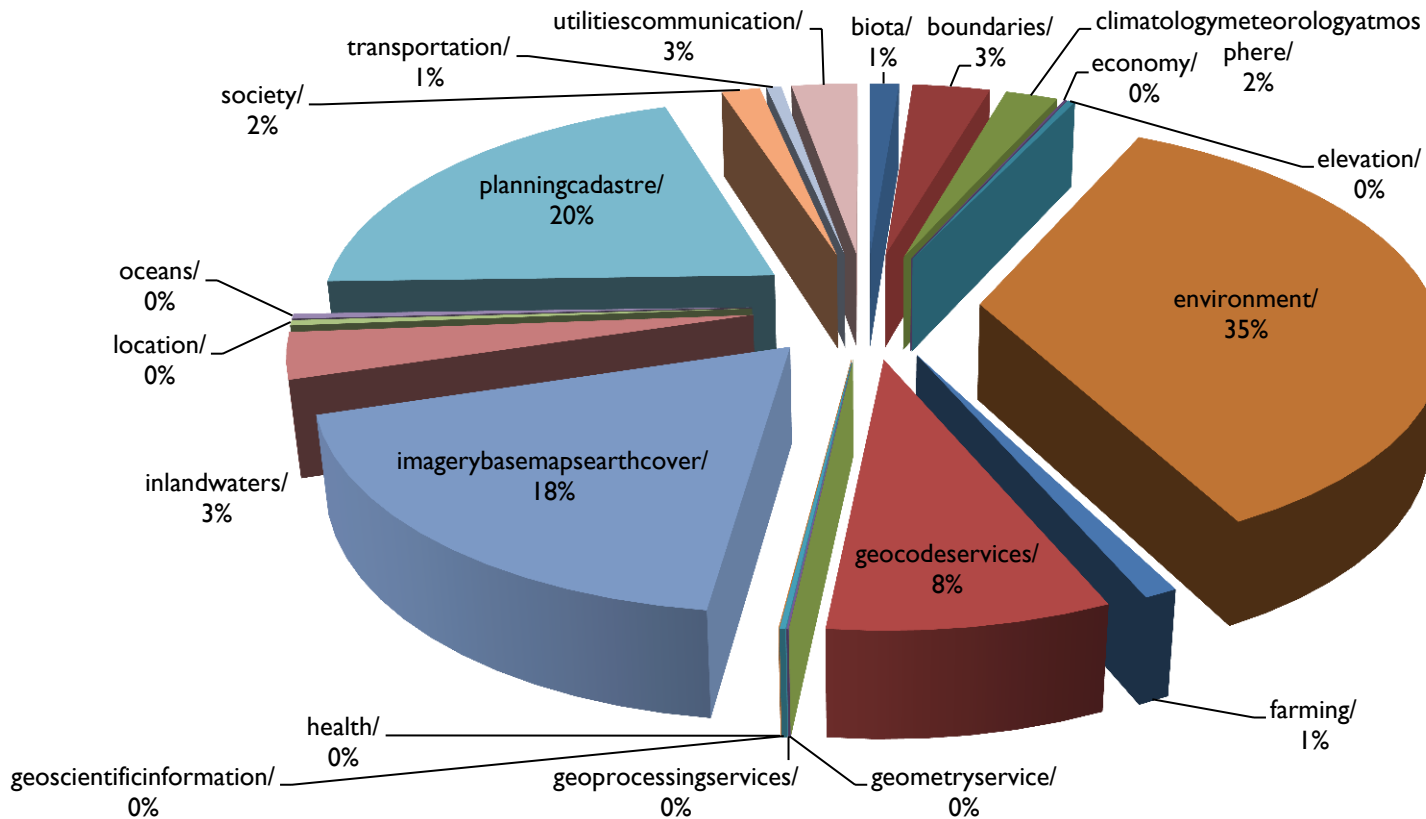
- ◇ Total # of Page Visits (Annual Total)



MD iMap Updates – January 2012

- MD iMap Stats

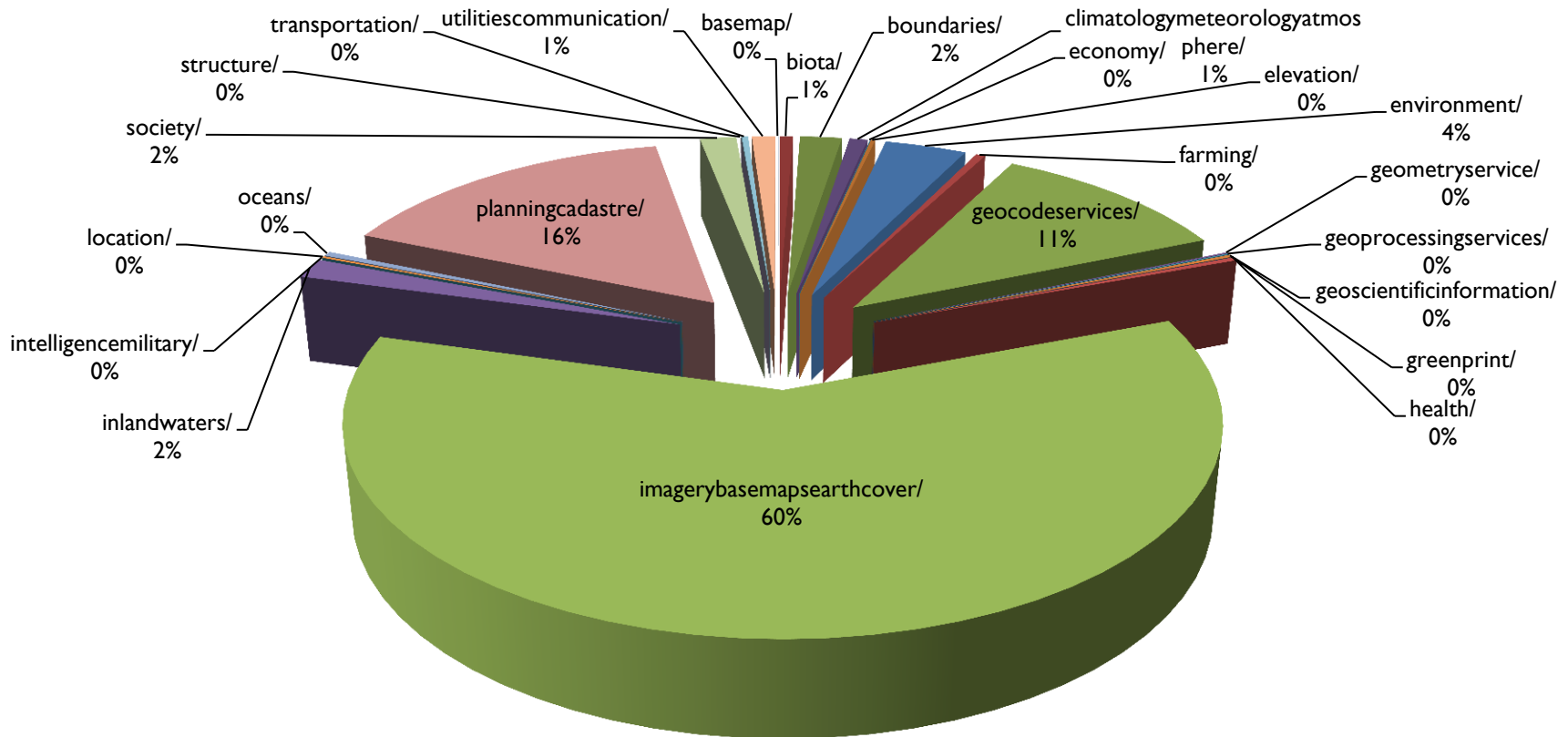
- ◇ Top ISO Categories by Desktop Use (Annual Total)



MD iMap Updates – January 2012

- MD iMap Stats

- ◊ Top ISO Categories by Application Use (Annual Total)



MD iMap Updates – January 2012

- Additional Items
 - ◇ Mobile Application Development
 - ◇ Mapping Interface Standardization Revisited

LOOK FOR MORE ON THESE TOPICS IN THE
COMING MONTHS

<http://www.imap.maryland.gov/portal/>

MD iMap Updates – January 2012

- Next Technical Committee Meeting
 - ◇ Tuesday, January 24th (1 – 3p.m.) @ MDE
(1800 Washington Blvd., Baltimore, MD 21230)
 - ◇ Call-in Number: 410-537-4281
 - ◇ Participation: Open & Welcome
 - ◇ Meetings: 1st & 3rd Tuesdays of the Month
 - ◇ Contact: Julia Fischer (jfischer@choosemaryland.org)
or Frank Siano (fsiano@mde.state.md.us)

<http://www.imap.maryland.gov/portal/>