

MD iMap Updates – July 2012

<http://www.imap.maryland.gov/portal/>

 MDiMap



MD iMap Updates – July 2012

- ArcGIS Online Premium
- Google Maps Engine
- FY13 Initiatives
- Map Service News
- Application News
- Additional Items
- Upcoming Technical Committee Meetings

<http://imap.maryland.gov/>

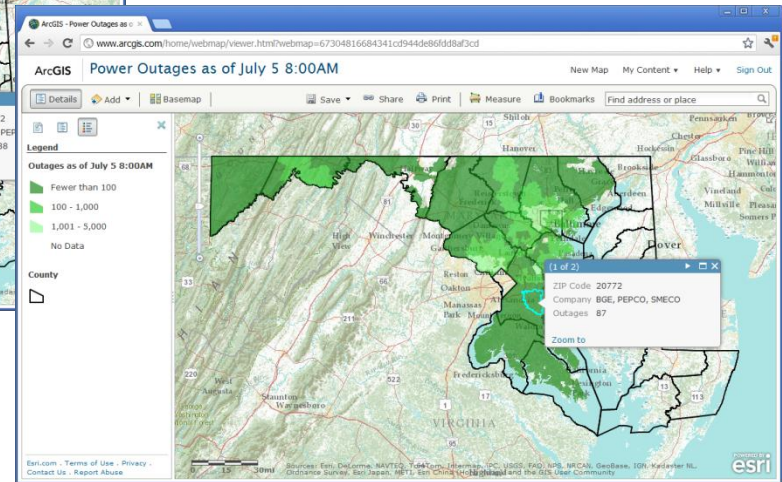
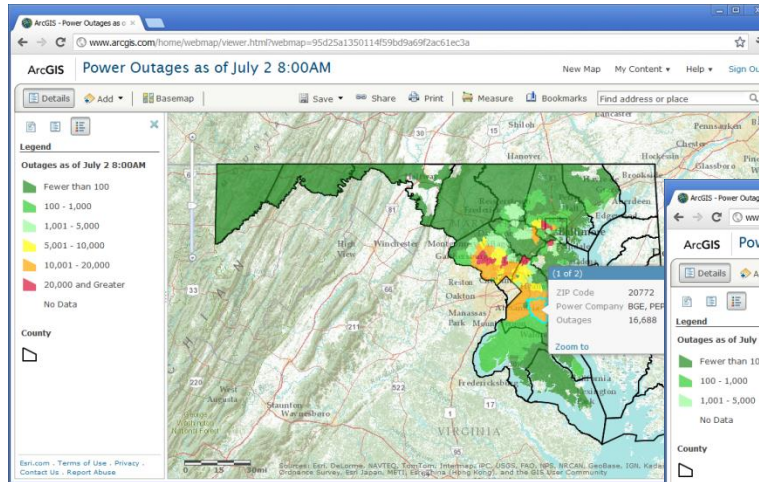
twitter  @MDiMap

MD iMap Updates – July 2012

ArcGIS Online Premium

- Power Outages by ZIP Code

	A	B
1	ZIPCodes	CustomersOut
2	20601	574
3	20602	498
4	20603	377
5	20608	6
6	20611	29
7	20612	2
8	20616	342
9	20617	113
10	20619	6
11	20621	2
12	20622	25
13	20624	2
14	20626	1
15	20628	1
16	20630	2
17	20632	5
18	20634	8
19	20636	8
20	20637	49
21	20639	36
22	20640	598
23	20645	4
24	20646	525
25	20650	17



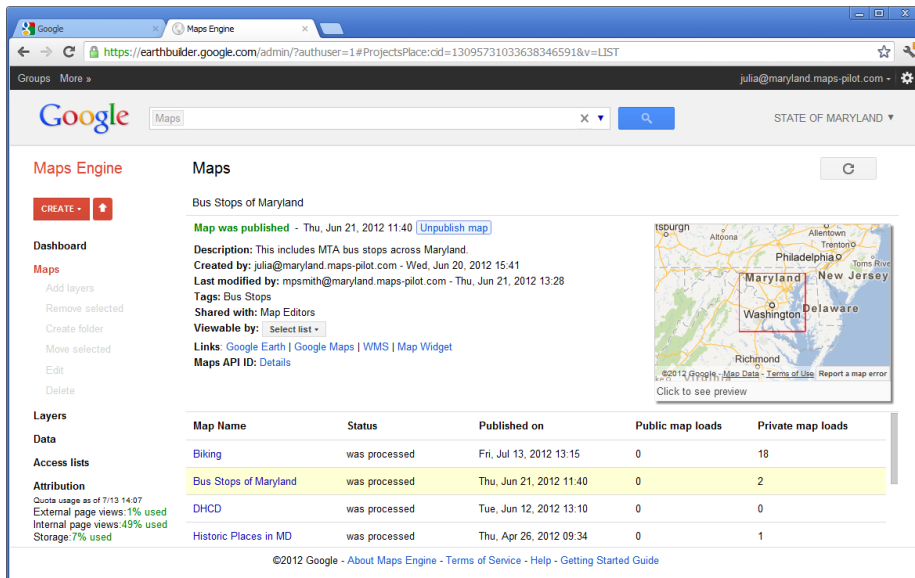
<http://imap.maryland.gov/>

twitter @MDiMap

MD iMap Updates – July 2012

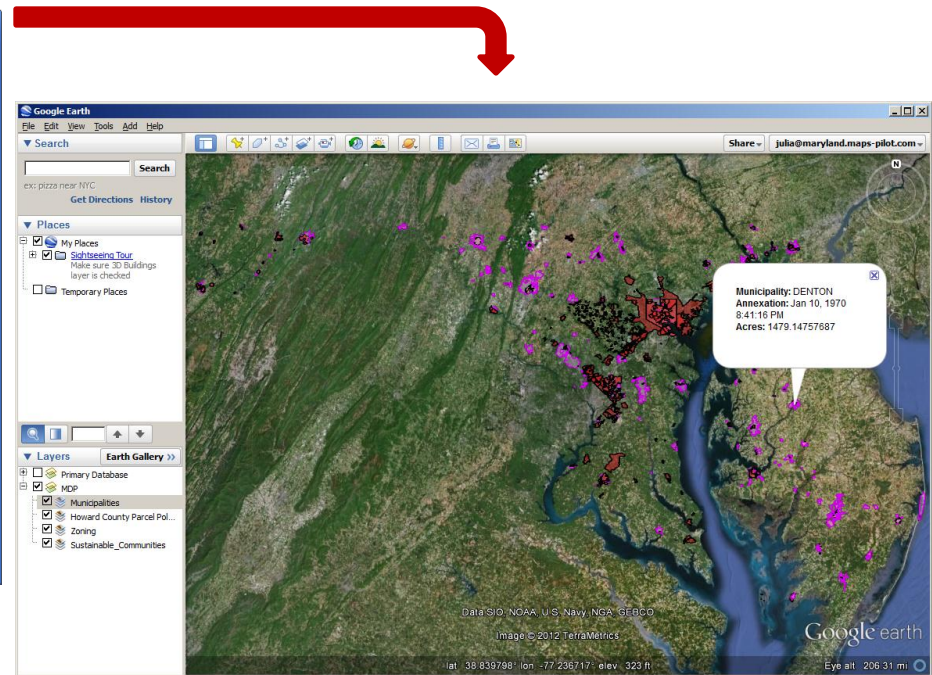
Google Maps Engine

- MDP, DBED, SHA, MdTA, GIO Office Participating



The screenshot shows the Google Maps Engine admin interface. The main content area displays the 'Bus Stops of Maryland' map, which was published on Thursday, June 21, 2012, at 11:40. The map description states it includes MTA bus stops across Maryland. The interface also shows a table of map processing status.

Map Name	Status	Published on	Public map loads	Private map loads
Biking	was processed	Fri, Jul 13, 2012 13:15	0	18
Bus Stops of Maryland	was processed	Thu, Jun 21, 2012 11:40	0	2
DHCD	was processed	Tue, Jun 12, 2012 13:10	0	0
Historic Places in MD	was processed	Thu, Apr 26, 2012 09:34	0	1



The screenshot shows the Google Earth interface with a map of Maryland. A red arrow points from the Maps Engine interface to this Google Earth view. The map displays various layers, including 'Municipalities' and 'Howard County Parcel Pol...'. A popup window is visible over the Denton area, providing information about the municipality's annexation.

Municipality: DENTON
Annexation: Jan 10, 1970
8:41:16 PM
Acres: 1479.14757687

<http://imap.maryland.gov/>

twitter @MDiMap

MD iMap Updates – July 2012

FY13 Initiatives

- MD iMap Migration to 10.1 (Anticipated Jan. 2013)
- MD iMap Access through SwGI
- Cascading Geocode Service
- Socrata REST Endpoint Data Download

<http://imap.maryland.gov/>

 @MDiMap

MD iMap Updates – July 2012

Map Service News

- Parcel Data
 - Polygon coverage now available for entire state!!!
- New Maps Services:
 - Mean High Water Service (*InlandWaters*)
 - CIR Service for Western Shore Imagery (*ImageryBaseMapsEarthCover*)

MD iMap Updates – July 2012

Map Service News

- **Reminder!** Map Service Search Engine
 - Portal > Services Tab

Explore MD iMap Services

Search: [Start Over](#) [PDF of Service Folder Descriptions](#)

4 Services Found

Search Results		
Folder	Service Name	Service Type
Boundaries	MD.State.BBCensusBlocks.2010	MapServer
Boundaries	MD.State.CensusBlocks.2009	MapServer
Society	MD.State.CensusBoundaries.2010	MapServer
UtilitiesCommunication	MD.State.BroadbandProviderPerCensusBlock	MapServer

<http://imap.maryland.gov/>

 @MDiMap

MD iMap Updates – July 2012

Map Service News

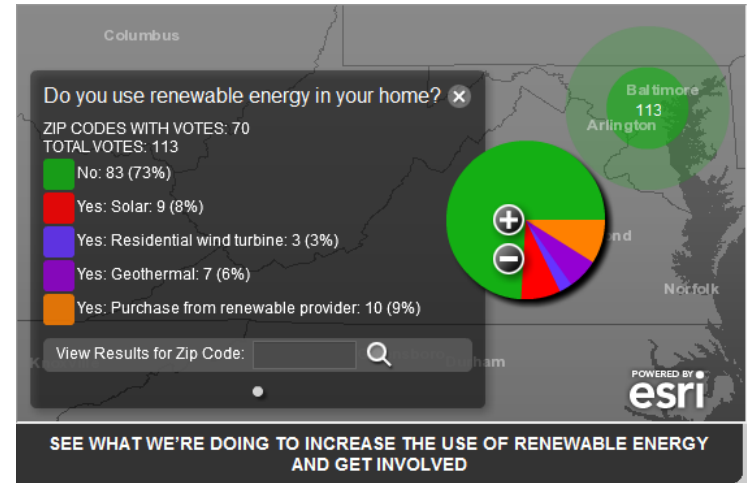
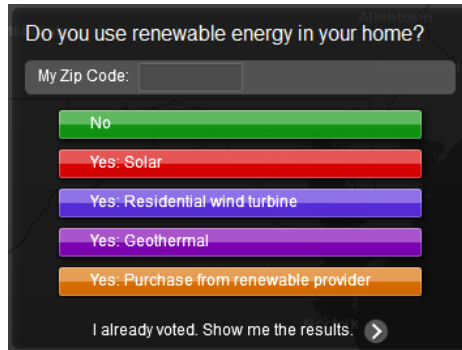
- Updated Services:
 - Unemployment, Rural Legacy, Program Open Space, Maryland Environmental Trust Service, Composite Imagery and 6” Imagery...

MD iMap Updates – July 2012

Application News

- New Applications:

PollMap



<http://www.statestat.maryland.gov>

- Updated Applications:



Budget Map



Tree Planting



State Stat



Stream Health

MD iMap Updates – July 2012

Next Technical Committee Meeting

- Tuesday, July 17th (1 – 3p.m.) @ MDE
(1800 Washington Blvd., Baltimore, MD 21230)
- Call-in Number: 410-537-4281
- Participation: Open & Welcome
- Meetings: 1st & 3rd Tuesdays of the Month
- Contact: Julia Fischer (julia.fischer@maryland.gov) or Frank Siano (fsiano@mde.state.md.us)

<http://imap.maryland.gov/>

 @MDiMap