



Maryland State Geographic Information Committee

A commitment to excellence in the development and coordination of geographic information technologies.

Statewide Initiatives



Maryland State Geographic Information Committee

A commitment to excellence in the development and coordination of geographic information technologies.

Orthos

- 2013 aerial photography for Eastern Shore
 - complete and available
- 2014 aerial photography for Western Shore
 - Acquisition began late February
 - Completion by December
 - Using UltraCam - new camera technology that allows higher flight to get a larger footprint with the same level of resolution and accuracy
 - Buy Up Options (3", lidar, planimetric updates, oblique, lu/lc,...)



For questions contact Jim Cannistra:

(410) 767-4460 (office)

(443) 540- 0975 (mobile)

jim.cannistra@maryland.gov



Maryland State Geographic Information Committee

A commitment to excellence in the development and coordination of geographic information technologies.

MDP / County Integrated Parcel Initiatives

2012-13

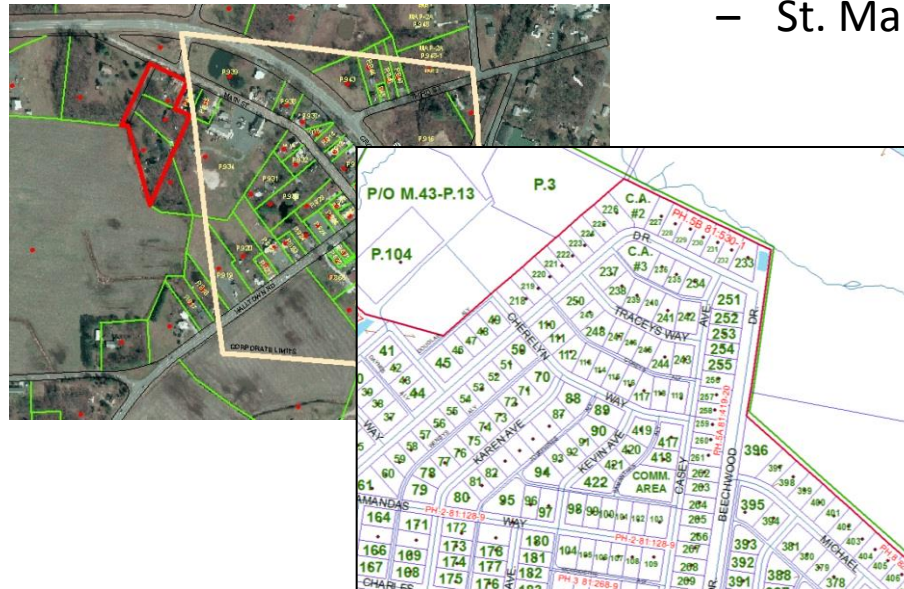
- Caroline
- Dorchester
- Talbot
- Queen Anne's
- Calvert
- Kent
- Washington
- Garrett
- Baltimore City
- Somerset

2013-14

- Worcester
- Wicomico
- Allegany
- Charles

2014-15

- Cecil (?)
- Howard
- Harford
- Carroll
- St. Mary's





LiDAR Web Services

- Topography Server: <http://lidar.salisbury.edu/arcgis/rest/services>
- Topography Viewer - <http://apps.esrgc.org/maps/md-lidar-viewer/>
- 2013 Harford elevation data
 - Countywide products added to the Topography Server
 - Countywide GRID mosaic and raw deliverables (Classified, BareEarth, First Return, ByFlightLine) are available for distribution
- 2013 Montgomery elevation data
 - Deliverables expected very soon so look for those countywide products to be added to the server in the coming weeks.
 - Countywide GRID mosaics and any raw deliverables will also be available for distribution.
- LiDAR Server reorganized

For questions contact Erin Silva:

410.677.5482

elsilva@salisbury.edu



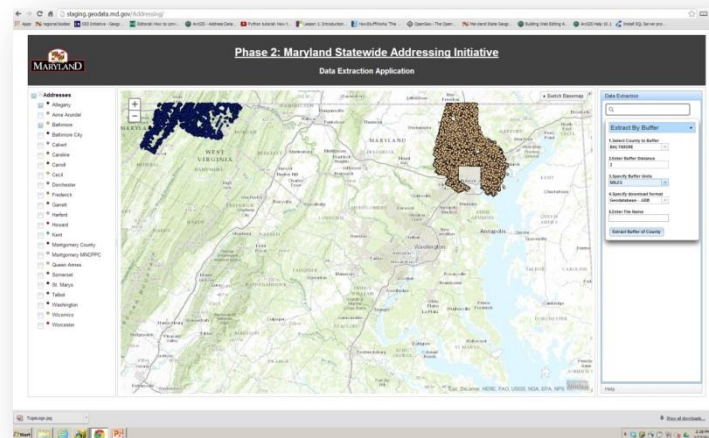
Maryland State Geographic Information Committee

A commitment to excellence in the development and coordination of geographic information technologies.

Maryland Statewide Addressing Initiative

- Over 2.24 million points initially collected, standardized, and aggregated from 21 counties & city of Baltimore
- Just completed an automated process to transform each counties' data into the state standard.
- Currently processing April's update. The data will be incorporated into the statewide geocoder and the [Data Extraction Application](#) by next week.
- From this point forward project is entering maintenance mode. Possibly moving to a quarterly update schedule.
- Sharing centerline and address point data with Delaware; data will be incorporated into geocoder for iMap 2.0

For questions contact Russell Provost :
(410) 260-7318 (office)
(703) 407-0324 (cell)
russell.provost@maryland.gov





Maryland State Geographic Information Committee

A commitment to excellence in the development and coordination of geographic information technologies.

One Maryland One Centerline

- Leverage authoritative state and local data sources
- Outreach meetings with Local Jurisdictions
- Close to procuring Esri Roads & Highways
- Collaboration
 - Mid-Atlantic Centerline Steering Committee
 - MWCOG / BMC / Tri-County Council
 - National Roads & Highways Users Group
- Exploring Data Conflation Options

For questions contact Erin Lesh or Marshall Stevenson:

410-545-8464

1md1cline@sha.state.md.us



Maryland State Geographic Information Committee

A commitment to excellence in the development and coordination of geographic information technologies.

