



**Maryland State Geographic Information Committee**

*A commitment to excellence in the development and coordination of geographic information technologies.*

# Maryland State Geographic Information Committee (MSGIC ) Quarterly Meeting

January 21, 2015

Baltimore, MD



# Maryland State Geographic Information Committee

A commitment to excellence in the development and coordination of geographic information technologies.

## Project Reports



# Maryland State Geographic Information Committee

A commitment to excellence in the development and coordination of geographic information technologies.

## GIO Update

GIO: Barney Krucoff, DoIT

[barney.krucoff@maryland.gov](mailto:barney.krucoff@maryland.gov)



# Maryland State Geographic Information Committee

A commitment to excellence in the development and coordination of geographic information technologies.

## MD iMAP Update

Technical Committee Co-Chair: Julia Fischer, DoIT

[julia.fischer@maryland.gov](mailto:julia.fischer@maryland.gov)



## MD iMAP 1.0

- Built in 2009
- Purely Physical Environment
- ArcGIS Server 10.0
- 250+ Map Services
- Data Served from SDE
- No Clustering Capability
- Limited Disaster Recovery

## MD iMAP 2.0

- Built in 2014
- Virtualized Environment
- ArcGIS Server 10.2.2
- 100+ Map Services
- Data served from GDB
- Clustered GIS Servers
- Multiple “Environments”
- Full Disaster Recovery



# Maryland State Geographic Information Committee

A commitment to excellence in the development and coordination of geographic information technologies.

## Federal Projects

Federal Govt. Caucus Chair: Cynthia McCoy, FEMA

[cynthia.mccoy@fema.dhs.gov](mailto:cynthia.mccoy@fema.dhs.gov)



## DATA – Coastal LiDAR

- <http://www.coast.noaa.gov/digitalcoast/data/coastallidar>
- Over 371 gigabytes of high-resolution elevation data covering Maryland's entire coastal zone are available.
- This type of data is critical to the development of models that examine potential local flooding impacts from coastal storms and sea level rise.



## DATA – Land Cover

- <http://www.coast.noaa.gov/digitalcoast/data/ccapregional>
- Land cover data provide inventories of coastal intertidal areas, wetlands, and adjacent uplands for the coastal regions.
- These data are used to identify high-priority landscapes for Maryland's coastal protection and restoration efforts.
- Users can view data in Land Cover Atlas:  
[www.coast.noaa.gov/digitalcoast/tools/lca](http://www.coast.noaa.gov/digitalcoast/tools/lca)





## DATA – Economics: National Ocean Watch

- <http://www.coast.noaa.gov/digitalcoast/data/enow>
- This program provides time-series data on the ocean and Great Lakes economy, which includes six economic sectors dependent on the oceans and Great Lakes.
- Maryland's coastal counties can use this information to gain insight into their local coastal economies.



## TRAINING

- <http://www.coast.noaa.gov/digitalcoast/training/list>
- In fiscal year 2014, 11 Maryland coastal professionals received training on a variety of technical and process-based topics through the Digital Coast.
- Courses taught participants a variety of skills, such as project design and evaluation and planning and facilitating effective meetings.



## TOOLS – Coastal County Snapshots

- <http://www.coast.noaa.gov/digitalcoast/tools/snapshots>
- Complex local data sets are automatically formatted into easy-to-understand stories, complete with charts and graphs, with this web tool.
- Local officials use the snapshots as a planning tool, since the information helps them assess their county's resilience to flooding and understand the benefits provided by natural resources.



## TOOLS – CanVis

- <http://www.coast.noaa.gov/digitalcoast/tools/canvis>
- This visualization tool helps users “see” potential impacts from coastal development or water level change.
- Users can download background pictures and insert objects (hotels, houses, and other features) of their choosing.
- Managers in Maryland use this tool to help stakeholders visualize the effects of sea level rise.



## GEOSPATIAL CONTRACTING

- Through the Digital Coast, coastal organizations in need of geospatial data or services benefit from the use of the NOAA Office for Coastal Management's Coastal Geospatial Services Contract.
- This vehicle provides a way for local, state, and federal agencies to take advantage of a streamlined process to obtain services from the nation's top geospatial firms.
- In fiscal year 2014, over \$1 million was awarded to private geospatial firms to conduct mapping projects in Maryland's coastal zone, including the acquisition of imagery data.



# Maryland State Geographic Information Committee

A commitment to excellence in the development and coordination of geographic information technologies.

## Regional Projects

Regional Caucus Chair: Mara Kaminowitz, BMC

[mkaminowitz@baltometro.org](mailto:mkaminowitz@baltometro.org)



## Baltimore Region GIS Group (BRGISC)

- Open meeting in December to discuss GDX and sharing GIS data during emergencies
- Centerline conflation continues



## Washington Council of Governments (COG)

- Completed an online mapping application for the bicycle and pedestrian plan
- Regional Transportation Data Clearinghouse moving from FLEX to AGOL





## Western Maryland GIS User Group

- No winter meeting
- Spring meeting in Frederick, looking for presentations



## Mid-Shore Region

- Talbot and Queen Anne's County working with GeoCortex
- Looking for others doing the same



# Maryland State Geographic Information Committee

A commitment to excellence in the development and coordination of geographic information technologies.

## State Projects

**State Government Caucus Chair: Jim Cannistra, MDP**

[jim.cannistra@maryland.gov](mailto:jim.cannistra@maryland.gov)



## 2014 Western Shore Imagery

### Status

Production Complete

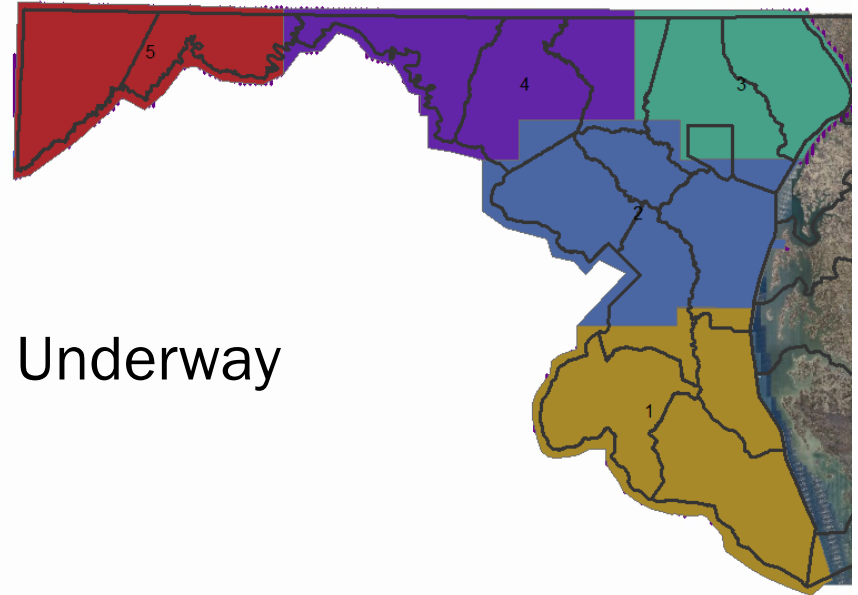
Independent QC Complete

Stakeholder QC Complete

Final Corrections and Production Underway

Product Deliveries Underway

MDiMAP 2.0 Data Load Pending



Eastern Shore Planned for 2016 Acquisition

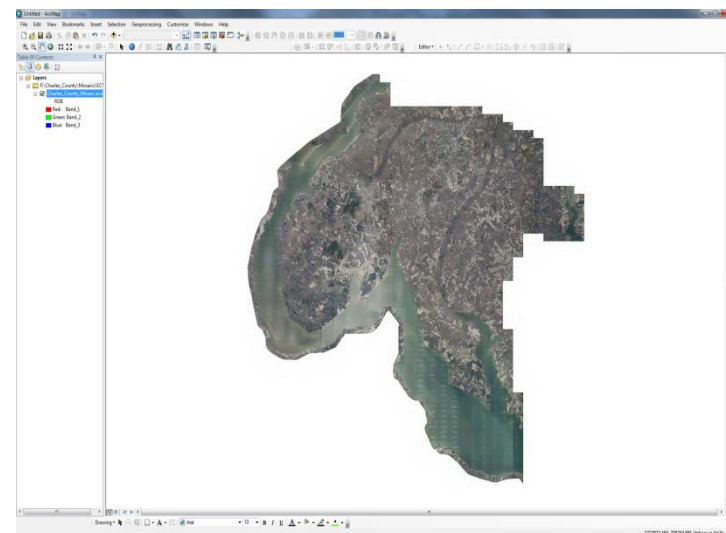


# Maryland State Geographic Information Committee

A commitment to excellence in the development and coordination of geographic information technologies.

## Imagery Deliverables

DEM	1/9/2015 4:40 PM	File folder
Jpeg2000	1/16/2015 1:36 PM	File folder
MD_Political_Boundary	1/13/2015 11:48 AM	File folder
Metadata	1/10/2015 8:41 AM	File folder
Mosaics	1/16/2015 1:23 PM	File folder
Seamlines	1/16/2015 1:22 PM	File folder
SID	1/16/2015 1:37 PM	File folder
TIFF	1/13/2015 9:22 AM	File folder
Tile_Index	1/16/2015 1:21 PM	File folder
2014 Ortho Deliverables AECOM Check Li...	1/16/2015 1:08 PM	Adobe Acrobat D...
2014 Ortho Deliverables Check List_Charl...	1/10/2015 9:01 AM	Adobe Acrobat D...





# Maryland State Geographic Information Committee

A commitment to excellence in the development and coordination of geographic information technologies.

## MDP / County Integrated Parcel Initiatives

### Complete

- Caroline
- Dorchester
- Talbot
- Queen Anne's
- Calvert
- Kent
- Washington
- Garrett
- Baltimore City
- Somerset
- Worcester
- Wicomico
- Allegany
- Charles

### Underway

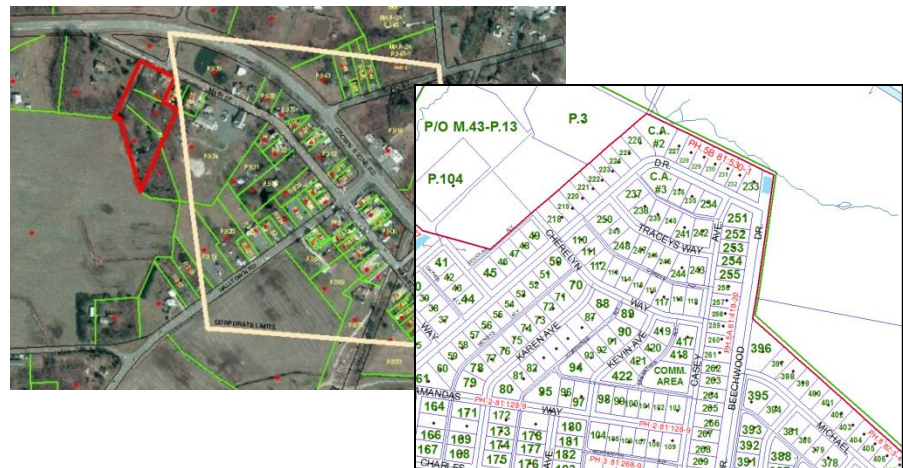
- Harford
- St. Mary's
- Anne Arundel
- Montgomery
- Carroll

### Pending

- Frederick
- Baltimore

---

- Prince George's
- Cecil





## Data Download Summary

- 4,735 Downloads
  - 7/1/14 >> 12/15/14 (less than 6 months) via portal
- 1,275 DVDs shipped
  - 7/1/13 >> 6/30/14

*This is a 375% increase over the entire previous year*

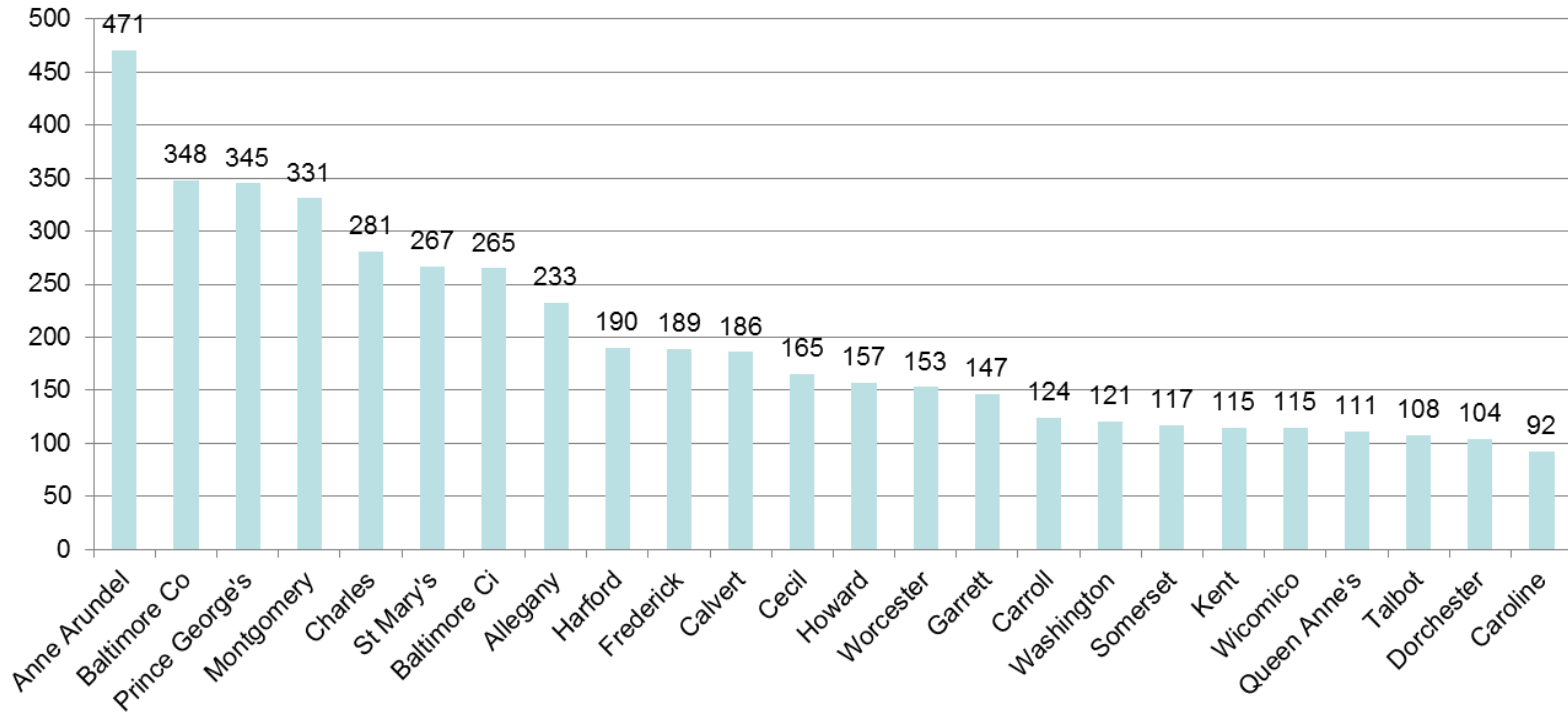
*Represents approximately 5 terabytes of data*

*Does NOT reflect access through MD iMAP*



## Downloads by County

### TOTAL DOWNLOADS BY COUNTY (MDPV & *FINDER* Quantum)







# Maryland State Geographic Information Committee

A commitment to excellence in the development and coordination of geographic information technologies.

## New Data

- Statewide Geocoding File
- CAMA (Structure) Data

**Appendix D:  
CAMA Dataset Structures**

In previous Editions of *MdProperty View/FINDER Quantum/FINDER Online*, as now, the Computer Assisted Mass Appraisal (CAMA) dataset was typically created on a yearly basis using data obtained from the State Department of Assessments and Taxation (SDAT). Each January download contained additional residential housing characteristics only as available for parcels included in the various SDAT CAMA datasets for each jurisdiction – data from the SDAT CAMA datasets were combined into a single summarized dataset for inclusion in MDP's then DVD, now downloadable and online products.

Due to SDAT's combining of their residential and commercial CAMA datasets into a single dataset in their Integrated Property Tax Software System in 2011, MDP has changed the way that CAMA data are included in our downloadable and online products. New to *MdProperty View/FINDER Quantum/FINDER Online* this year is the release of Computer Assisted Mass Appraisal (CAMA) data from SDAT's January 2014 release of CAMA data.

The CAMA datasets have been significantly restructured and redeveloped as a result of SDAT's own combining and restructuring of their residential and commercial CAMA data. Users of MDP's downloadable and online data can now access new, never before available commercial CAMA data characteristics as well as new, previously unavailable residential CAMA data characteristics. The CAMA datasets included in the current Edition of *MdProperty View/FINDER Quantum/FINDER Online* (example Talbot County) are:

<b>Talbcama.shp</b>	Main characteristics, including summary building characteristics, associated with a given parcel account number – one record per parcel account number
---------------------	--

Only available in *MdProperty View* and *FINDER Quantum*:

<b>Talbbldg.shp</b>	Detailed building characteristics associated with a given building – one or more building records per parcel account number
<b>Talbsuba.shp</b>	Building subarea characteristics associated with a given building – one or more building subarea records per building
<b>Talbland.shp</b>	Land categories associated with a given parcel – one or more records per parcel account number

Note that all CAMA parcel records are assigned x,y coordinates (located) based on their parcel point location and not on individual structures. Later CAMA data releases in 2015 will include a January 2015 update of all CAMA datasets listed above as well as a new release of additional CAMA detail data:



## Other Agencies

- MD iMAP 2.0 Conversion
- SDAT – Data Sales RFP
- DHCD
  - Working w/DoIT/ESRGC on Community Investment Tax Credit Program
  - Mapper <http://www.dhcd.maryland.gov/website/DHCDmapper.aspx>
  - Working on mobile-friendly version
- DNR, SHA, MLIS, MDE, Ag, Archives
  - Discussion.....



# Maryland State Geographic Information Committee

A commitment to excellence in the development and coordination of geographic information technologies.

## Local Projects

Local Government Caucus Chair: Matt Webb, AA Co.

[itwebb00@aacounty.org](mailto:itwebb00@aacounty.org)



## Annapolis City

- Busy with inauguration support
- Cultural Landscape Survey
- Integrating Sewer/Water GEMS model with GIS Data



## Anne Arundel County

- Working with Esri Services
- Working on migrating existing Silverlight Geocortex applications to HTML 5



## Talbot & Queen Anne's County

- Working with Geocortex to develop new mapping applications
- Interested to hear from others that have had some experience with Geocortex workflows



## 2015 Local Caucus Goals

- Reach out to local caucus members with monthly updates from Executive Committee Meetings
- Provide opportunities during the lunch break at future quarterly meetings to network with fellow local caucus members
- Continue to relay concerns from the caucus members to the Executive Committee.
- Assist the Executive Committee with reaching out to caucus members regarding critical updates and surveys.