

# MD iMAP UPDATE

# MD iMAP SERVICES

## Public Services (Updated)

<http://geodata.md.gov/imap/rest/services>

- Property Data Tax Maps
- K thru 12 Public Schools
- Sustainable Communities
- Enterprise Zones
- Enterprise Zone Focus Areas

# MD iMAP SERVICES

## Public Services (New)

<http://geodata.md.gov/imap/rest/services>

- K thru 12 Charter Schools
- Power Outages
- Working Waterfronts
- Veterans Services
- War Memorials and Cemeteries
- Parcel Account Number Locator

# MD iMAP IMAGERY

- Update Six Inch Imagery Image Service – DONE  
[http://geodata.md.gov/imap/rest/services/Imagery/MD\\_SixInchImagery/ImageServer](http://geodata.md.gov/imap/rest/services/Imagery/MD_SixInchImagery/ImageServer)
- Update Six Inch Imagery Cached Map Service – Coming Soon  
[http://geodata.md.gov/imap/rest/services/Imagery/MD\\_SixInchImagery/MapServer](http://geodata.md.gov/imap/rest/services/Imagery/MD_SixInchImagery/MapServer)
  - 2014 Western Shore and 2013 Eastern Shore Imagery
- Archive Six Inch Imagery Cached Map Service  
[http://imagery.geodata.md.gov/imap/rest/services/SixInch/SixInchImagery2011\\_2013/MapServer](http://imagery.geodata.md.gov/imap/rest/services/SixInch/SixInchImagery2011_2013/MapServer)
  - 2013 Eastern Shore and 2011 Western Shore Imagery

# MD iMAP IMAGERY

- Six Inch Imagery Color Infrared (CIR) Cached Map Service  
[http://geodata.md.gov/imap/rest/services/Imagery/MD\\_SixInchCIRImagery/MapServer](http://geodata.md.gov/imap/rest/services/Imagery/MD_SixInchCIRImagery/MapServer)
  - Moving Forward Render CIR By Manually Adjusting Layer Parameters
  - Instructions Available at <http://imap.maryland.gov/Pages/training-documents.aspx> (“How to Apply Color Infrared Symbology to an Image Service”)
  - Separate Six Inch CIR Imagery Service Will No Longer Be Available
  - Existing CIR Cached Map Service Moved to Imagery Server as of 4/24/2015 and Retired From Public Server  
[http://imagery.geodata.md.gov/imap/rest/services/SixInch/SixInchCIRImagery2011\\_2013/MapServer](http://imagery.geodata.md.gov/imap/rest/services/SixInch/SixInchCIRImagery2011_2013/MapServer)

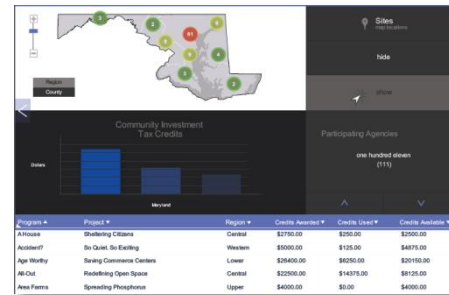
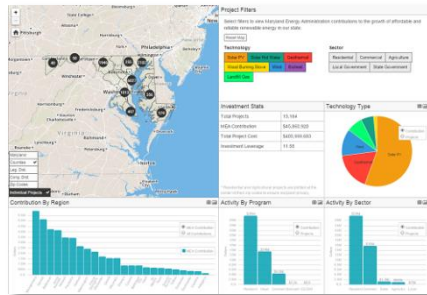
# MD iMAP PORTAL

<http://imap.maryland.gov>

- [Updated LiDAR Status Map](#)
- [Added Link to LiDAR Metadata on Main LiDAR Page](#)
- [Updated LiDAR Metadata Entries](#)
- [Added Training Videos](#)
- [Added Additional Training Documents](#)
- [Added Statewide GIS Training Program Page](#)
- [Added Training Tab to Main Navigation Bar](#)
- [Updated GIO Organizational Chart](#)
- [Added ArcGIS Pro Request Form](#)
- [Updated Imagery Program Status](#)
- [Updated Data Submission Policy](#)

# MD iMAP PORTAL

- New Dashboards



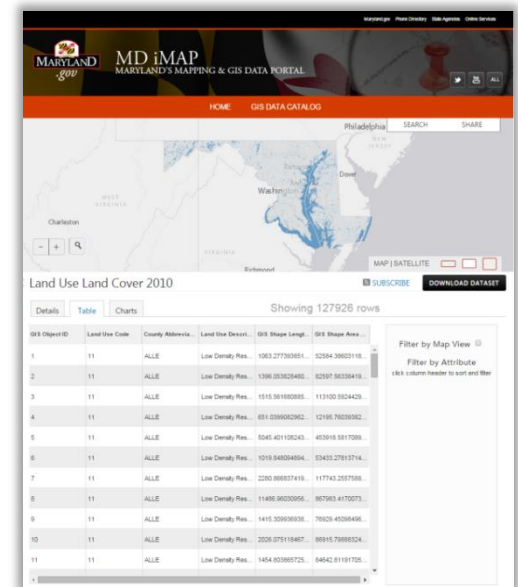
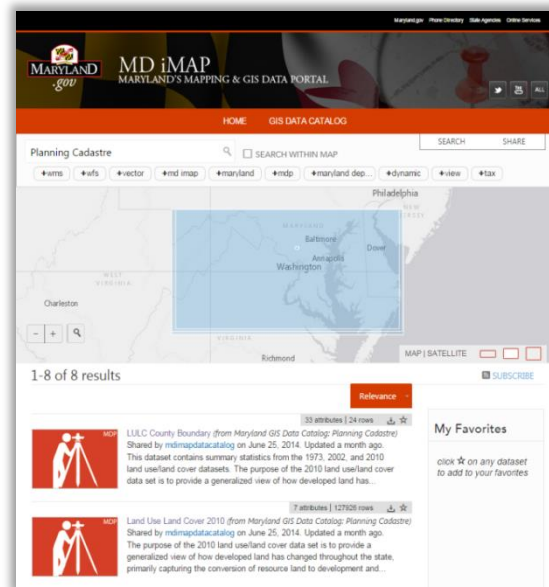
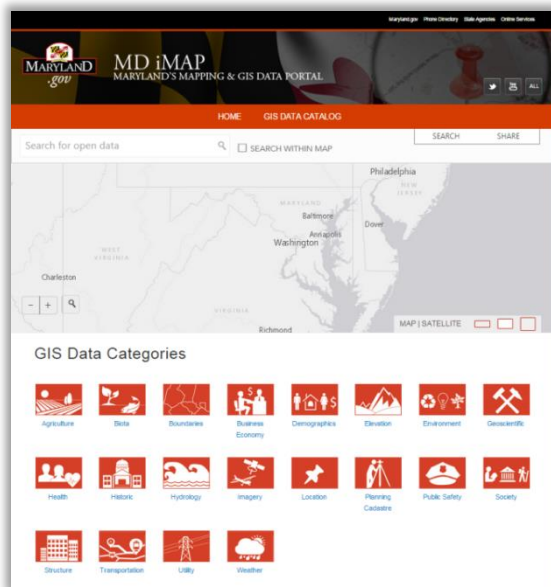
\*Coming Soon

- New Maps



# MARYLAND OPEN DATA

- GIS Data Catalog – <http://data.imap.maryland.gov>
  - Built on Esri's Open Data Platform
  - Search on All Available MD iMap Datasets
  - Download in Multiple Formats or Access via APIs
    - Formats include: CSV, KML, Shapefile, WMS, WFS, GeoJSON





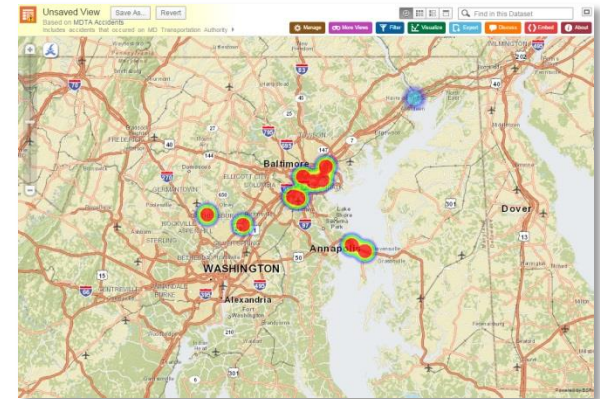
# MARYLAND OPEN DATA

- Open Data Portal – <http://data.maryland.gov>
  - Socrata-Based Resource
  - Search Hundreds of Available Datasets
  - Download in Multiple Formats or Access via APIs
    - Formats include: CSV, JSON, RSS, XML, RDF, XLS

The screenshot shows the search results for 'Reported Sewer Overflows'. The results are displayed in a table with columns for Name, Popularity, Type, and RSS. The first result is 'Reported Sewer Overflows' with 42,453 views. Other results include 'Violent Crime and Homicide by Year: Line Chart', 'Robbery & Aggravated Assault: Line Chart', 'Violent Crime Totals by Year: Line Chart', 'Stormwater Retrofits (Pounds of Nitrogen Removed)', 'MCC Vehicle Volume Data', 'Maryland Port Administration: General Cargo', 'Employment Figures', '2012 Electricity Generation by Source in Maryland', and '2006 Electricity Generation by Source in Maryland'.

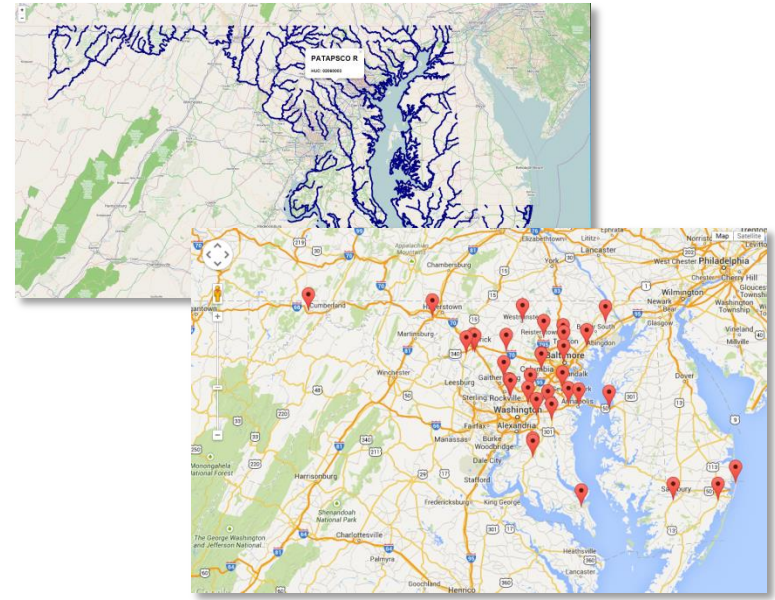
The screenshot shows a table of MDTA Accidents. The table has columns for CC Number, Date, Time, Accident Type, and Location 1. The data is sorted by Date in descending order.

CC Number	Date	Time	Accident Type	Location 1
1	12/7008926	07/01/2012	1630 PD	(39.296997, -76.500642)
2	12L005365	07/02/2012	1229 PD	(39.000549, -76.399312)
3	12L005388	07/02/2012	1229 PD	(39.000549, -76.399312)
4	127008861	07/02/2012	445 PI	(39.263677, -76.206491)
5	127008958	07/02/2012	802 PD	(39.240862, -76.590171)
6	127008860	07/02/2012	832 PD	(39.270227, -76.639281)
7	127008863	07/02/2012	905 PI	(39.281269, -76.551464)
8	127008864	07/02/2012	847 PD	(39.285787, -76.547395)
9	127008901	07/03/2012	634 PD	(39.240835, -76.600811)
10	127008967	07/05/2012	2232 PI	(39.270348, -76.587557)
11	12L005502	07/06/2012	1104 PD	(39.000499, -76.404149)
12	127009026	07/06/2012	1121 PD	(39.270937, -76.645389)
13	127009031	07/06/2012	1439 PI	(39.256324, -76.598971)
14	127009051	07/06/2012	2366 PD	(39.225988, -76.676707)
15	128021665	07/07/2012	1247 PI	(39.190411, -76.676555)
16	128021675	07/07/2012	1350 PD	(39.184768, -76.675386)
17	12E004588	07/07/2012	1834 PI	(39.083295, -76.964917)
18	12L005533	07/07/2012	1218 PD	(39.003002, -76.400782)
19	127009062	07/07/2012	4 PD	(39.241974, -76.568976)
20	127009068	07/07/2012	1744 PD	(39.240862, -76.590171)
21	127009177	07/09/2012	543 PD	(39.253967, -76.547741)
22	127009204	07/09/2012	1740 PI	(39.266811, -76.608071)
23	12E004661	07/10/2012	750 PI	(39.074829, -76.912385)
24	127009230	07/10/2012	731 PI	(39.240862, -76.590171)



# OPEN PLATFORM

- Enterprise Resources Designed to Support
  - Open Source Users
  - CADD Users
  - Other Users
- Open Data Cannot Be Successful Unless GIS Activities Support Beyond the Traditional GIS Community



MicroStation

# NEXT STEPS

- Streamline Service Performance
- Add More Data (Non-Spatial & Spatial)
- Integrate Spatial & Non-Spatial Open Data Resources (Single Search)
- Increase Data Accessibility Through Open Source Resources to End Users
- Increase Dashboard Development/Deployment
- Increase Local Government Collaboration
- Broaden Developer Community
- Improve Tracking of Metrics/Usage

# QUESTIONS?

Matt Sokol, GISP  
Senior GIS Analyst  
Maryland Department of Information Technology  
Geographic Information Office  
[matthew.sokol@maryland.gov](mailto:matthew.sokol@maryland.gov)

Julia Fischer, GISP  
Senior GIS Analyst  
Maryland Department of Information Technology  
Geographic Information Office  
[julia.fischer@maryland.gov](mailto:julia.fischer@maryland.gov)

---

MD iMAP | <http://imap.maryland.gov>  
MD Open Data | <http://data.maryland.gov>