

Federal Update

U.S. Census Bureau
MSGIC Quarterly Meeting
October 20, 2016

MSGIC Federal Update Topics

- Previous updates
 - The FGDC Geospatial Platform
 - FGDC Activities (new Address Theme, Parcel Summit, new NSDI Strategic Plan)
- Today
 - Address Theme Update
 - The Census Boundary Quality Assessment and Reconciliation Project
 - USGS Structures Data and *The National Map Corps*

Address Theme Update

- The FGDC approved a new Address Theme for the National Spatial Data Infrastructure
- The Census Bureau and DOT are co-theme leads
- Census Bureau and DOT will co-chair a FGDC Address Subcommittee to identify user requirements for the NAD
- A National Address Database (NAD) will be the primary data set for this theme
- DOT conducted a NAD Pilot Project

The Boundary Quality Assessment and Reconciliation Project (BQARP)

- Comparing locally sourced boundary data and imagery to adjust Census boundaries where necessary
- Coordinating efforts with State and Local partners
- Aligning with Parcel and Public Land Survey System (PLSS) boundaries, where applicable
- Improving the spatial quality of legal and administrative boundaries within the MAF/TIGER System
 - Establish spatial accuracy for each boundary section
 - Lock boundaries in place to avoid changes without legal documentation

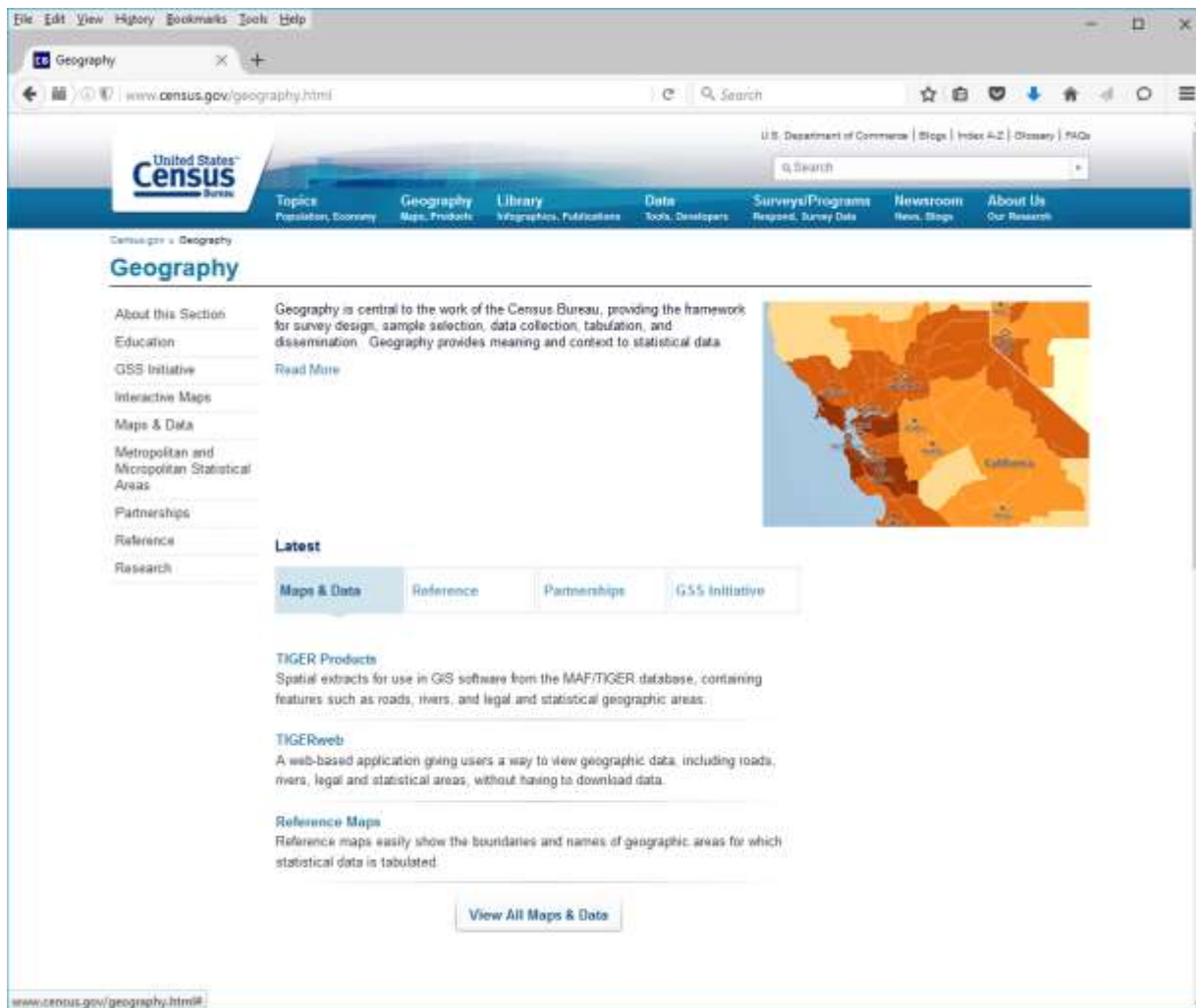
BQARP Example

- Realigning the Census boundary (**blue**) with the local data boundary (**red**) and parcels (**black**)



Census Bureau Resources

<http://www.census.gov/geography.html>



Census Bureau Resources

<http://www.census.gov/geo/maps-data/>

The screenshot shows the Census Bureau's website for Geography - Maps & Data. The page is structured with a top navigation bar, a main header, and several content sections. The 'Maps & Data' section is highlighted, and it includes a description of geographic data and products. Below this, there are three columns of content: 'Maps', 'Data', and 'Geographic Data'. Each column lists various resources and provides a brief description of each. A small globe image is located on the right side of the page.

Maps & Data
Find geographic data and products such as the TIGER/Line Shapefiles, KMLs, TIGERweb, cartographic boundary files, geographic relationship files, and reference and thematic maps.

Maps

- Census Data Mapper
- Reference
- Thematic
- Maps Available for Purchase

Data

- TIGER Products
- Census Geocoder
- Partnership Shapefiles
- Relationship Files
- Gazetteer Files
- Block Assignment Files
- Name Lookup Tables
- Tables
- Landview

Geographic Data

TIGER Products
Geospatial Files and Applications from our MAF/TIGER database. Tools for use in GIS software, Web Mapping Services (WMS) to use in your applications, and browsers to view geographic data.

Census Geocoder
The Census Geocoder allows users to look up the geography an address is located within for up to 1,000 addresses at a time.

Partnership Shapefiles
The Partnership Shapefiles are used in our partner programs to share data with and capture data from our partners.

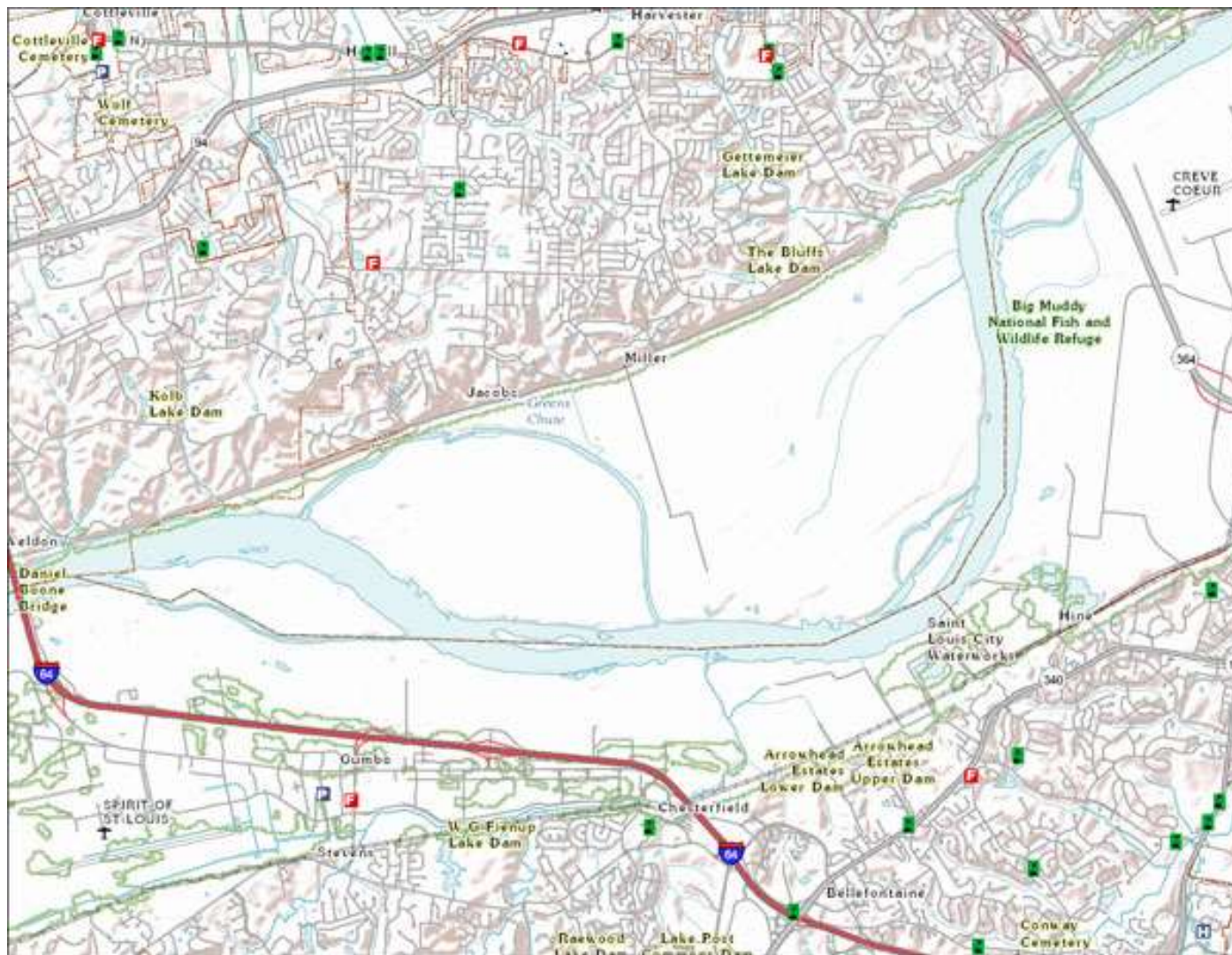
Relationship Files
Relationship files help users compare different vintages of geography, such as Census 2000 blocks to 2010 Census blocks in text format.

Gazetteer Files
Lists of geographic entities, such as county, place, and census tracts, with information on name, geographic code, population, housing unit counts, and

USGS Structures Database and *The National Map Corps*

- The structures database includes schools, hospitals, post offices, police stations, cemeteries, and other important public buildings
 - <http://nationalmap.gov/structures.html>
- TNMCorps is an online crowdsourcing mapping project
 - Volunteers update and verify structures data
 - <http://nationalmap.gov/TheNationalMapCorps/index.html>

Structures Database Example



Questions?

Contact Lynda Liptrap

U.S. Census Bureau

FGDC Coordination Group Representative

lynda.a.liptrap@census.gov