



**Maryland State Geographic Information Committee**

*A commitment to excellence in the development and coordination of geographic information technologies.*

# State Updates

Matt Sokol



## Department of Information Technology (DoIT)

- State & Local Data Sharing Agreement – *Kenny Miller*
- Statewide Imagery Program – *Kenny Miller*
- Statewide Training Program
- MD iMAP
  - Feature Services
  - Integration with Open Data Portals/[data.maryland.gov](http://data.maryland.gov)
  - Data Downloads (Imagery & LiDAR)
  - MD GeoShare
  - MD iMAP Portal Batch Geocoder
  - New Services (Coming Soon)





# Maryland State Geographic Information Committee

A commitment to excellence in the development and coordination of geographic information technologies.

*DRAFT - Strategic Plan - DRAFT*

## Maryland Geospatial Data Sharing Program

**Vision** - Create a publicly accessible statewide repository of Maryland's authoritative geospatial data by utilizing the best data available from state and local government sources

- Master MOU w/Addenda for each database
- Locals are data owners: State agencies are custodians of statewide databases
- Start with existing programs: Roads, Parcels, Addresses
- Build on successes
- DoIT & Agency partners to meet with local governments





## Statewide Imagery Program

### Eastern Shore Imagery Project 2016

- Axis/AECOM Team
- 9-1-1 Board funded - Project # 16-023 \$494,819
- Cecil County local sponsor
- Cecil → Worcester
- 6" pixel with buy-up options
- Pilot area in Cecil
- New QA tool for Team & counties
- Islands, Bay coverage
- Final deliverables in 2016





## Statewide Training Program

- Three In-Person Courses
  - Intro to GIS, MD iMAP and ArcGIS Online
  - Intro to ArcGIS Desktop and MD iMAP
  - Intermediate ArcGIS Online and MD iMAP
- Online Course coming soon
- As of January 2016
  - 18 total training sessions conducted – Each course 6 times
  - 199 total students attended
- Calendar of trainings and seats available on [MD iMAP Portal](#)
- Looking into expanding beyond State employees
- Course offered at 2016 TUgis Conference





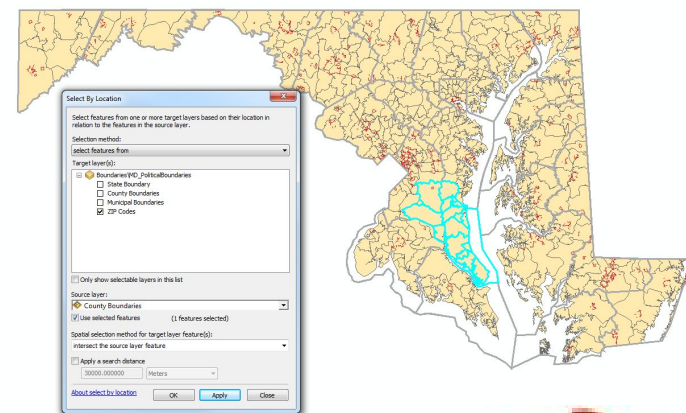
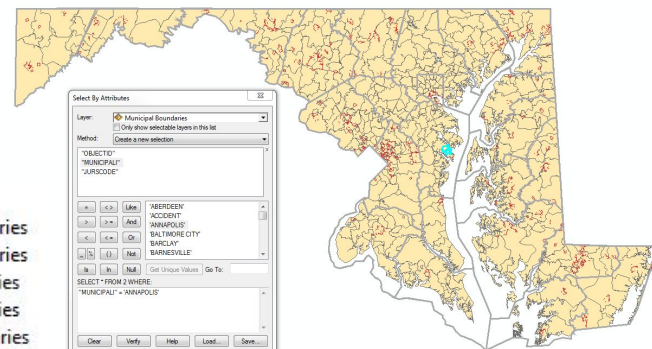
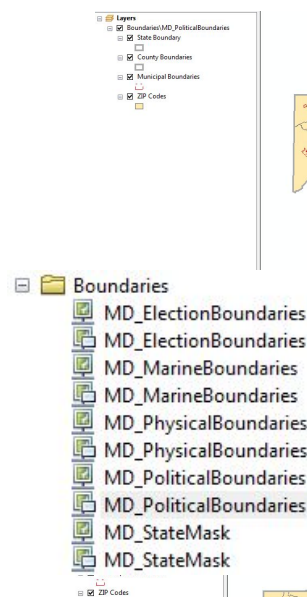


# Maryland State Geographic Information Committee

A commitment to excellence in the development and coordination of geographic information technologies.

## MD iMAP Feature Services

- Query Services
  - Select by Location
  - Select by Attribute
- Change Service Symbology
- Change Service Layer Order
- Enabled on most layers

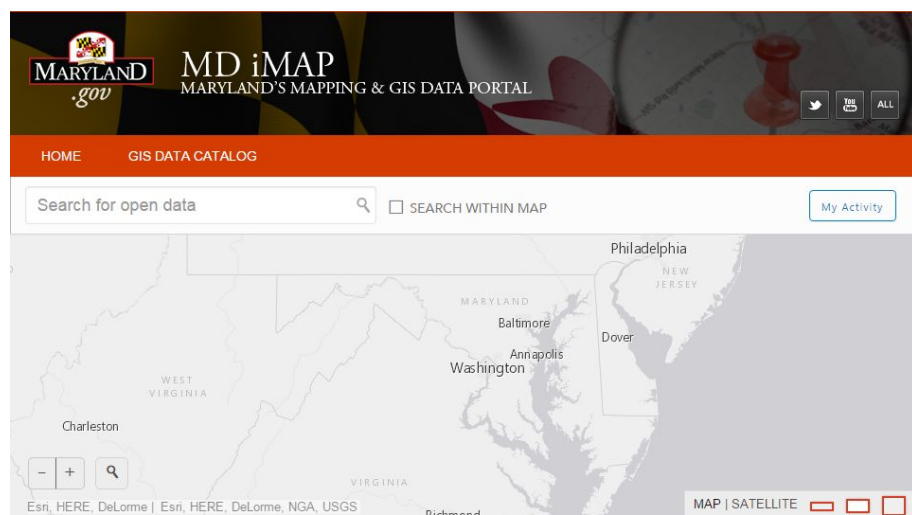




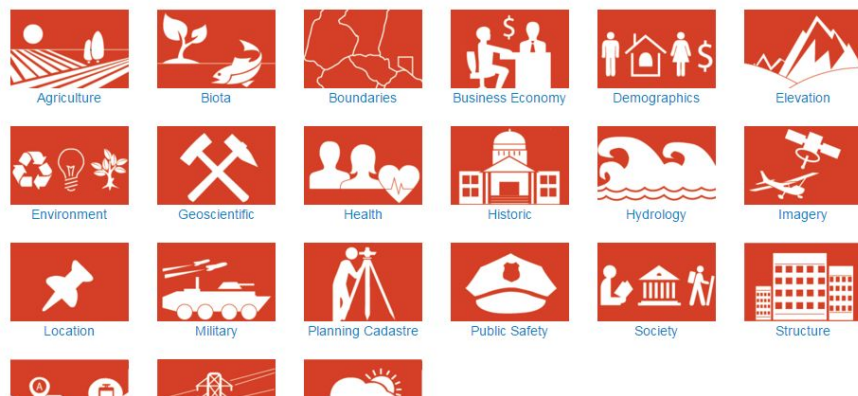
# Maryland State Geographic Information Committee

A commitment to excellence in the development and coordination of geographic information technologies.

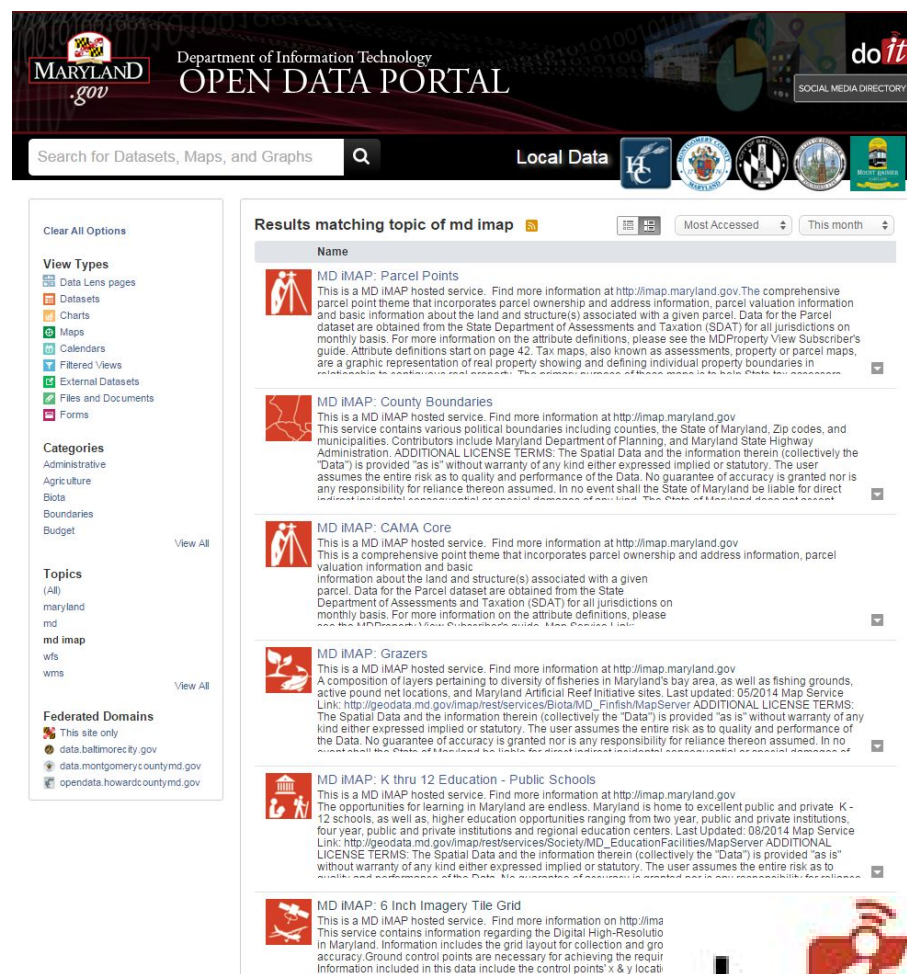
## MD iMAP Integration with Open Data Portals



### GIS Data Categories



[data.imap.maryland.gov](http://data.imap.maryland.gov)



[data.maryland.gov](http://data.maryland.gov)





## MD iMAP Imagery Downloads

- Pre-Defined Areas
  - Via Dropbox
  - Six Inch, Three Inch, NAIP
  - JP2, SID, TIF, Mosaic SID
- Focused Areas
  - Via Imagery Download Tool
  - <http://imagery.geodata.md.gov:8080/ExpressZip>

Imagery – <http://imap.maryland.gov/Pages/imagery-download.aspx>





## Maryland State Geographic Information Committee

A commitment to excellence in the development and coordination of geographic information technologies.

### MD iMAP LiDAR Downloads

- Pre-Defined DEMs
  - Via Dropbox
  - Include metadata, overview pyramids, and bare earth DEMs
  - Downloads by County
- Pre-Defined Point Cloud
  - LAS files by county coming soon
- Focused Areas
  - Via LiDAR Download Tool coming soon

LiDAR – <http://imap.maryland.gov/Pages/lidar-download.aspx>





# Maryland State Geographic Information Committee

A commitment to excellence in the development and coordination of geographic information technologies.

## MD GeoShare

- Second Maryland ArcGIS Online Organization
- Used for collaboration between State, Local, Regional and Federal partners
- Emergency Management
  - Damage Assessment Tool
  - Collaborative Exercises
- SHA Snap To Points





## MD iMAP Portal Batch Geocoder

- Web Interface for Geocoding

Choose File | No file chosen

Download this address table template to populate and submit address for matching.

There are 523 addresses to be geocoded.

OBJECTID	Address	County	Town	Total Cost	Agency	Category	Program
86	800 West North Avenue	Baltimore City	Baltimore	3165000	DHMH	Health and Environment	Qualified Health Centers Grant Program
94	4101 Old York Road	Baltimore City	Baltimore	4820000	DHMH	Health and Environment	Community Health Facilities Grant Program
144	1675 Woodbrooke Drive	Wicomico	Salisbury	5701000	DHMH	Health and Environment	Federally Qualified Health Centers Grant Program

Address:

City:

State:

ZIP Code:

Single-Field Address:

Multi-Field Address:



Matched: 311 Unmatched: 212 Total: 523

Find tips on how to format addresses to improve matching on the [MD iMAP Address Look-up Page](#).

OBJECTID	Matched Address	Agency	Y Coordinate	Locator Used	Category	Program	Project
	305 S CHURCH ST, SNOW HILL, MD, 21863	PSCP	38.168845	<a href="#">Local Address Points</a>	Education	Public School Construction Program	Snow Hill School
146	7505 GUMBORO ROAD, PITTSVILLE, MD, 21850	MDE	38.39636	<a href="#">Local Address Points</a>	Health and Environment	Water Supply Financial Assistance Program	Pittsville W Treatment Upgrade -
145	32000 CAMPUS DR, SALISBURY MD, 21805	MDE	39.373005	<a href="#">Local Address Points</a>	Education	Community College	Wor-Wic - and Admin Building



## Maryland State Geographic Information Committee

A commitment to excellence in the development and coordination of geographic information technologies.

### MD iMAP Services (Coming Soon)

- NAIP 2015
- State Facilities
- USNG
- New Color & Black and White Basemaps from SHA

### MD iMAP New/Updated Services

- Enterprise Zones (Incentive Zones) – UPDATED
- Protected Lands – UPDATED
- Floodplain – UPDATED
- Hurricane Joaquin Aerial Imagery – NEW
- Campus Facilities – NEW

### MD iMAP WMS Services

- Multiple Projections Enabled on most services
- State Plane Feet, State Plane Meters, WGS 84, Web Mercator







## Maryland Transit Administration (MTA)

- Inundation impacts by climate change, floods, and storm surges
  - Location of impacted sites due to sea level rise
  - Uses FEMA Floodplains, Depth Grids, Storm Surge

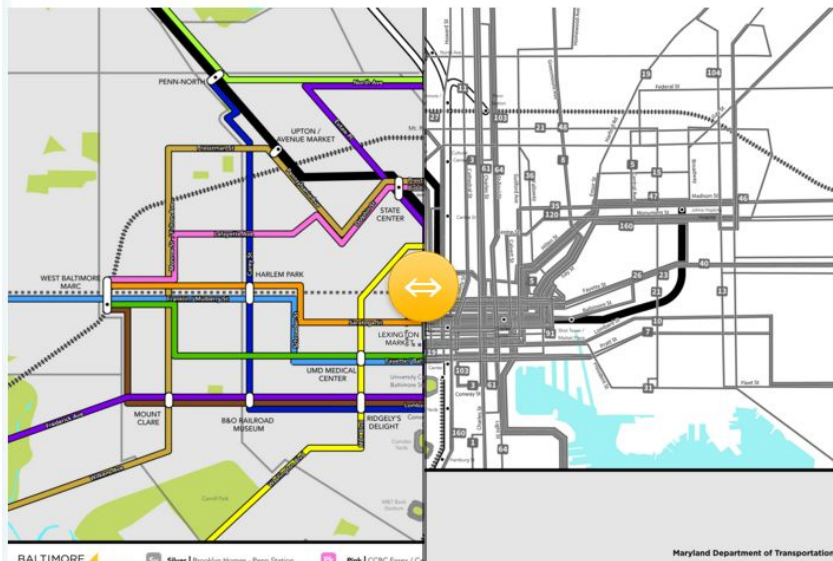


# Maryland State Geographic Information Committee

A commitment to excellence in the development and coordination of geographic information technologies.

## Maryland Transit Administration (MTA)

- Healthy food analysis of the BaltimoreLink bus reorganization
  - Impacts and benefits of reducing food deserts to provide access to quality food for transit riders



<http://mta.maryland.gov/citylink-map>





## Maryland Transit Administration (MTA)

- MARC Station rating model
  - Determining suitability for stops along MARC commuter rail network
  - Evaluating new proposed sites and making comparisons between alternatives