

# ALTERNATIVE SOLUTIONS FOR INVENTORY AND ASSET MANAGEMENT

Jason M Wheatley, GISP

Century Engineering

MSGIC – Summer Quarterly – July 22, 2016



INSPIRATION

Why are you not using Arc <this>?!



# DELDOT RAILROAD PROGRAM MANAGEMENT (RPM) SYSTEM







## DELDOT RAILROAD PROGRAM

DelDOT Agreement 1705  
(Railroad Design Services)

- Over 650 crossing Statewide
- Maintenance & Compliance
- Safety & Security
- Public Complaints & Incidents

## OPERATIONAL PICTURE

- What do we have?
- What is its condition?
- What is the priority?
- How can we improve it?
- How was it improved?



# RPM COMPONENTS

## Inventory

- Statewide coverage of crossing related assets
- Warning Devices, Rail Equipment, Road Striping, Crossing Signals
- Internal and Federal level reporting requirements (FRA)
- Mobile data collection
- Construction dispatch
- Map viewer

## Incidents/Maintenance

- Portal-based incident entry and field dispatch
- Provides lineage of incidents with action step logging and close-out reports
- Accountability & project planning
- Emergency & long-term tracking





# RPM COMPONENTS

## Projects (Construction)

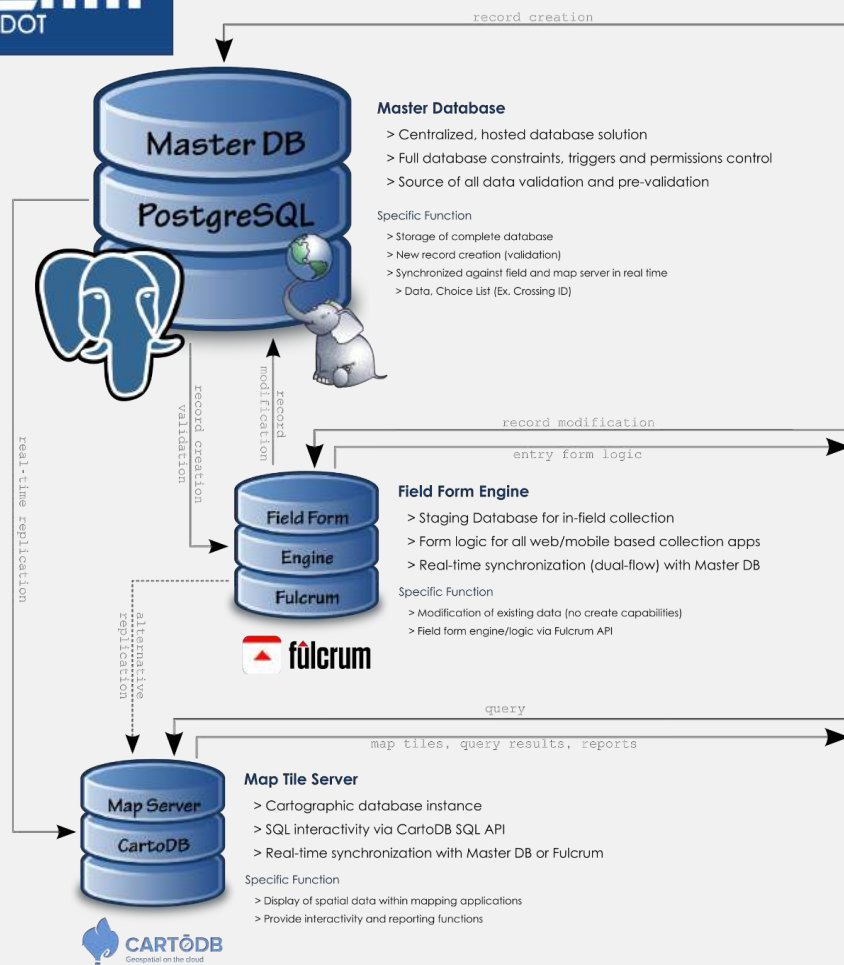
- From project planning to acceptance
- Digital replication of DelDOT's Inspector Daily Report (IDR)
- Real-time field to office communication
- Web-based entry / Inspection dispatch

## Portal

- Centralized hub of railroad information
- Visualization and reporting
- Web/mobile accessible



## Data Flow Model



## Web Portal



### Portal Overview

- > Dashboard landing page
- > Multi-modal/responsive
- > Reporting/visualization

### Specific Function

- > Display various app/db graphics
- > Create new crossing record
- > Launch specific applications
- > Pushbutton reporting



### Asset Inventory

- > Main map-based interface
- > Retrieve related data
- > Develop custom queries

### Specific Function

- > Modify inventory data
- > View incidents and construction entries
- > Flag for construction



### Construction Monitoring

- > View construction data
- > Real-time data sync
- > Inspector dispatch

### Specific Function

- > Create new construction records
- > Edit existing construction records
- > Launch inventory record
- > Generate IDRs
- > Document management



### Incident Reporting

- > View incident data
- > Real-time data sync
- > Field dispatch

### Specific Function

- > Create new incident records
- > Edit existing incident records
- > Launch inventory record
- > Track remediation



### Maintenance Tracking

- > View maintenance data
- > Real-time data sync
- > Field dispatch

### Specific Function

- > Create new maintenance records
- > Edit existing maintenance records
- > Launch inventory record
- > Generate reports
- > Document management

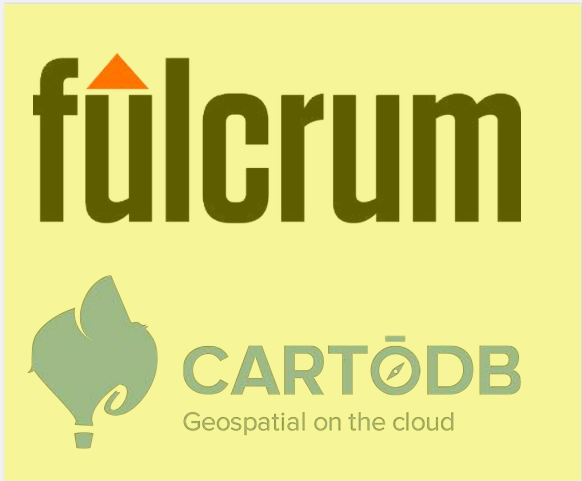




# THE STACK



express



## COLLECTION

The logo for Fulcrum, featuring the word "fulcrum" in a bold, lowercase, sans-serif font. A small red triangle is positioned above the letter 'u'.

- Inventory
- Inspection
- Construction Management
  
- iOS / Android
- Relational DB Structure
  - Mirror RPM data model
- Open APIs
  - Flexibility and control
- Real-time information transfer
  - Immediate data value
- Webhooks / Data Shares
  - Interoperability

# DATABASE

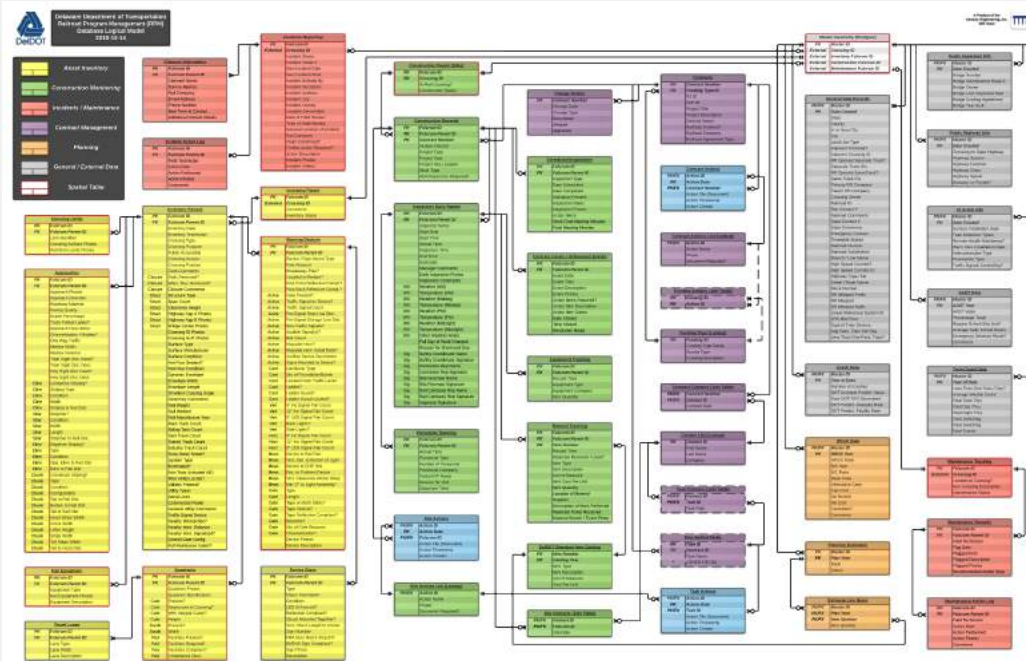


PostgreSQL



Sequelize

- PostgreSQL – RDBMS
- PostGIS – Spatial Extender
- Sequelize – promise-based ORM





## MAPPING / VIZ



mapnik

Google maps



- Google Maps – Javascript Mapping API
- D3js – Data-Driven Documents
- ~~CartoDB~~ Carto
  - Cloud PSQL/PostGIS
  - Web Visualizations
  - Spatial SQL
- Mapnik – Tile Renderer
- TileStache – Tile Map Server

DEMO

RPM Demo

# PERCEPTIONS



## DIFFICULT

Where do I start?

Do I have to be a developer?

There are too many options!

- Plethora of official documentation
- YouTube, Coursera, Udemy, etc...
- Programming skills do help
- OpenGeo Suite (Community Edition)

## NO DEDICATED SUPPORT

I need dedicated support!

- Not True
- Dedicated Open Source companies
  - Boundless
  - Redhat
  - EnterpriseDB
  - ...
- SaaS – Subscription-based

IT'S FREE!

Cheaper? YES!

- Not all Open Source is free
- Not all free is Open Source
- Generally refers to licensing
- Training
- Contributions – Don't just be a user
  - Contribute to core product
  - Provide documentation support
  - Monetary contribution



The background of the slide is a photograph of a construction site. In the foreground, there is a large, dark, textured surface, possibly a road or a large piece of machinery. In the background, three workers in high-visibility vests and hard hats are standing near a white vehicle. The scene is set outdoors with trees and a clear sky in the distance.

# WHY?

- Community developed software works
  - Power in numbers: More contributors – Better product
- Viable alternative/supplement to traditional solutions
- Reduce – Software licensing burdens/maintenance
- Focus – Build only what we need now
- Flexibility – But be adaptive to changing needs
- Responsive – Adapt quickly
- Scalability – Expand level of service

Thanks!



Jason Wheatley, GISP

Century Engineering, Inc.

[jwheatley@centuryeng.com](mailto:jwheatley@centuryeng.com)

@centurygis

@flippinggeo

[fulcrumapp.com/cases/century-engineering/](http://fulcrumapp.com/cases/century-engineering/)



Our Asset Management case study focuses around Century Engineering, Inc., a full service engineering consulting firm offering expertise in Civil, Geotechnical, Mechanical, Electrical, Plumbing, Structural, Environmental, Transportation, Utilities, Water/Wastewater and Geospatial Technology Solutions.

## Program Management Solutions with Fulcrum

Century Engineering, Inc. (Century) is proud to work with the Delaware Department of Transportation Railroad Program (DeIDOT) providing engineering design and technology solutions services related to over 500 railroad crossings that they manage and maintain statewide. DeIDOT is responsible for ensuring that all crossings promote safe travel for Delaware citizens, visitors, and railroad operators. This responsibility comes with the task of ensuring all railroad crossing structures are operational and compliant based on Federal and State regulations (ADA and MUTCD). In addition to maintaining the physical assets of the State's railroad crossings, DeIDOT also handles public complaints, reported incidents, and coordinates / monitors all construction activities related to maintenance and redesign projects.