

# MSGIC

- Executive Committee
- Membership
- Accomplishments
- Acknowledgements





# LiDAR

- Received 3.15m in Sandy Supplemental LiDAR funds
- 11 proposals submitted
  - 2 in Maryland
- Fall 2013 Acquisition
- April 2014 Delivery

- National Capital Region
  - St. Mary's
  - Charles
  - Prince George's
  - Montgomery
- Delaware / MD Eastern Shore
  - Dorchester
  - Caroline
  - Poplar Island Talbot County) – hopeful





# LiDAR Funding Partners

## Federal

- USGS
- NRCS
  - National & local

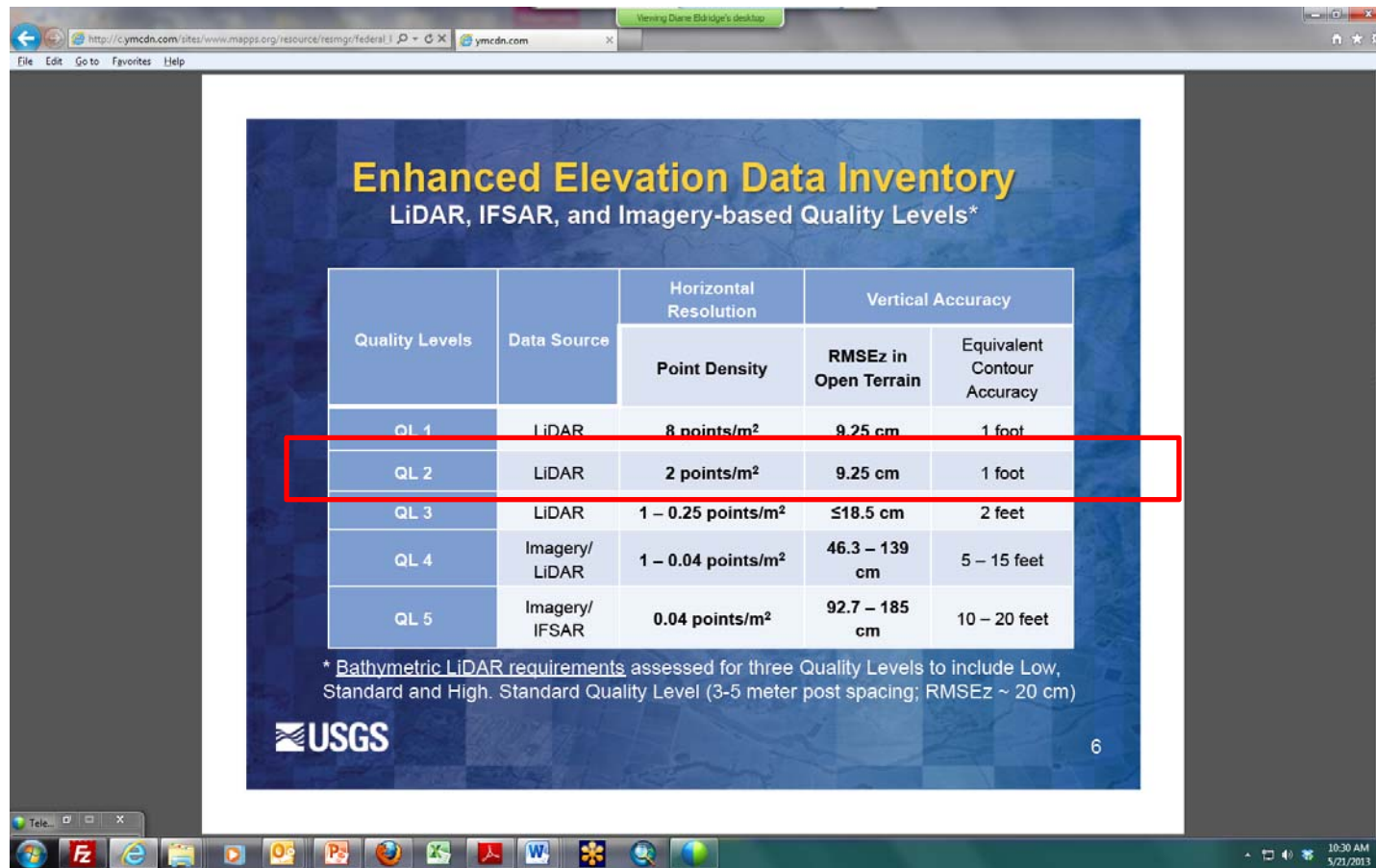
## State & County

- SHA
- MD-DNR
- Montgomery County
  - Data sharing





# LiDAR Specifications



**Enhanced Elevation Data Inventory**  
LiDAR, IFSAR, and Imagery-based Quality Levels\*

Quality Levels	Data Source	Horizontal Resolution	Vertical Accuracy	
		Point Density	RMSEz in Open Terrain	Equivalent Contour Accuracy
QL 1	LiDAR	8 points/m <sup>2</sup>	9.25 cm	1 foot
QL 2	LIDAR	2 points/m <sup>2</sup>	9.25 cm	1 foot
QL 3	LIDAR	1 – 0.25 points/m <sup>2</sup>	≤18.5 cm	2 feet
QL 4	Imagery/ LIDAR	1 – 0.04 points/m <sup>2</sup>	46.3 – 139 cm	5 – 15 feet
QL 5	Imagery/ IFSAR	0.04 points/m <sup>2</sup>	92.7 – 185 cm	10 – 20 feet

\* Bathymetric LiDAR requirements assessed for three Quality Levels to include Low, Standard and High. Standard Quality Level (3-5 meter post spacing; RMSEz ~ 20 cm)

USGS

6



Acquisition for Fall 2013. This is 0.7 meter point spacing. Leaf off acquisition.



# NAIP 2013 (per Gretta Luedeke, USDA)

- Maryland is scheduled for Phase II of the 2013 NAIP
  - acquisition from 7/17 thru 9/30
  - Funding dependent
- PA and NJ are part of Phase I

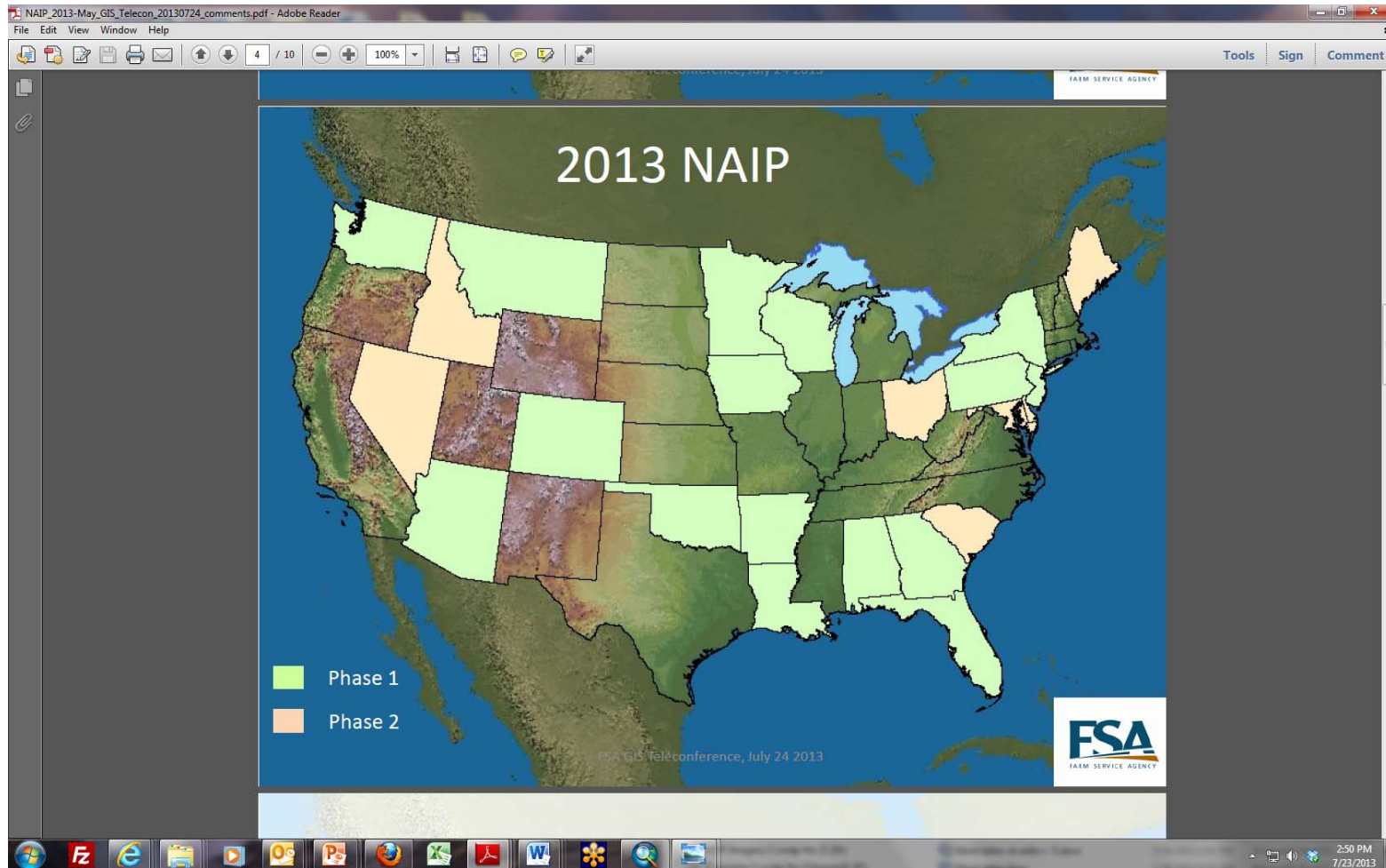
<http://gis.apfo.usda.gov/naipstatus13/>

<http://gis.apfo.usda.gov/gisviewer/>





# NAIP





# Orthoimagery

- Eastern Shore & Howard County
  - Acquisition complete
  - AT underway
  - Pilot and Howard complete
  - Project complete 12/13
- Future
  - Procurement Fall 2013
  - Western Shore reflight 2014
  - Options
    - LiDAR
    - Oblique
    - True Orthos
    - Planimetric (updates or new)
    - Topo (generation from LiDAR)
    - Land cover





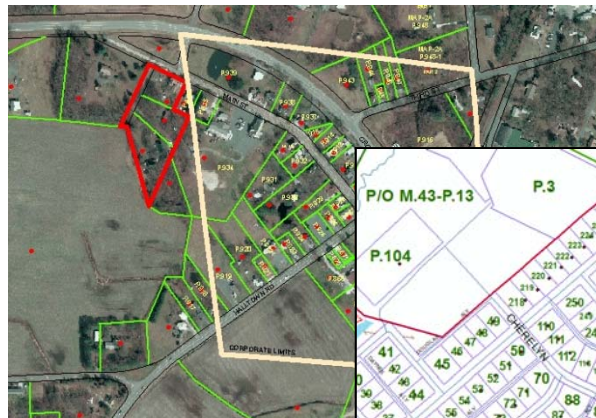
# MDP / County Integrated Parcel Initiatives

## 2012

- Caroline
- Dorchester
- Talbot
- Queen Anne's
- Calvert
- Kent
- Washington
- Garrett
- Baltimore City
- Somerset

## 2013

- Worcester
- Wicomico
- Allegany
- Charles



## 2014

- Cecil
- Howard
- Harford
- Carroll
- St. Mary's





# MDP Parcel data products

The screenshot displays the Maryland Department of Planning (MDP) website in a Mozilla Firefox browser window. The address bar shows the URL: [www.mdp.state.md.us/OurProducts/PropertyMapProducts/PropertyMapProducts.shtml](http://www.mdp.state.md.us/OurProducts/PropertyMapProducts/PropertyMapProducts.shtml). The website features a green header with the Maryland state logo and the text "DEPARTMENT OF PLANNING". Below the header is a navigation menu with links: HOME, OUR WORK, OUR PRODUCTS, YOUR PART, REDISTRICTING, HISTORICAL TRUST, and DATA CENTER. The main content area is titled "INSIDE MDP" and lists various services and links. A sidebar on the left contains "PROPERTY MAP QUICK LINKS" and "OTHER QUICK LINKS". The central section highlights four product categories: **MdProperty View DVDs**, **FINDER DVDs**, **FINDER Online**, and **Tax Maps**. Each category includes a brief description and a "More>" link. Below these, a "Welcome to MDP's Property Map and Data Products" section provides detailed information about the data products, including a list of available data layers and a link to the "About MdProperty View DVDs" page. The bottom of the screen shows a Windows taskbar with various application icons and a system clock indicating 4:33 PM on 7/22/2013.

MDP - Property Map Products - Mozilla Firefox  
File Edit View History Bookmarks Tools Help  
Archived NAIP Data 2013\_nri\_contractor.pdf MDP - Property Map Products  
[www.mdp.state.md.us/OurProducts/PropertyMapProducts/PropertyMapProducts.shtml](http://www.mdp.state.md.us/OurProducts/PropertyMapProducts/PropertyMapProducts.shtml)

MDP DEPARTMENT OF PLANNING  
HOME OUR WORK OUR PRODUCTS YOUR PART REDISTRICTING HISTORICAL TRUST DATA CENTER

INSIDE MDP  
About Us  
Sustainable Communities  
Smart Growth  
Local Government Planning  
State Clearinghouse  
Maryland Planning Directors Roundtable  
Maryland Sustainable Growth Commission  
Maryland Planning Commissioners Association  
Jefferson Patterson Park & Museum

PROPERTY MAP QUICK LINKS  
Property Map Products  
MdProperty View  
FINDER  
FINDER Online  
Tax Maps  
Production Schedule  
Credits & Acknowledgements  
Compare Products  
Contact Us

OTHER QUICK LINKS  
SDAT  
Real Property Search  
SDAT  
Assessment Offices  
Determining Zoning Authorities

**MdProperty View DVDs**  
Advanced Desktop GIS to use with ESRI's ArcGIS software. [More>](#)

**FINDER DVDs**  
User-Friendly Desktop GIS to use with free custom software. [More>](#)

**FINDER Online**  
Web-Based GIS to Use Online Hosted by MDP  
Includes downloadable.tif tax maps. [More>](#)

**Tax Maps**  
2' by 3' B&W paper maps with color detail or digital .TIF map images. [More>](#)

Welcome to MDP's Property Map and Data Products  
The Maryland Department of Planning (MDP) annually updates the more than 2,800 property maps, or tax maps, for Maryland's 23 counties - Baltimore City maintains its own property maps. MDP distributes these maps to the public in electronic DVD format, online or as paper tax maps and digital map images with no included data.  
Maryland's tax maps are updated and maintained electronically as part of MDP's Geographic Information Systems (GIS) database. The tax maps are then combined with recent parcel information from the Maryland State Department of Assessments and Taxation as individual parcel records are linked to their property locations on the tax maps.  
Tax Maps, Parcel data, Computer Assisted Mass Appraisal (CAMA) data, recent Sale data and associated layers including aerial imagery, ZIP code boundary files, land use/land cover data, census geography and census demographic data, Priority Funding Area (PFA) designations, legislative and congressional district boundary files, flood plain data, generalized zoning designations, protected land boundaries, sewer service area boundaries and (except for FINDER Online) residential Sales x,y point files for CY dating back to 2002 derived from the SDAT parcel data are available through MDP as:  
► **MdProperty View DVDs**  
► **FINDER DVDs**  
► **FINDER Online**  
Copies of the tax maps with no associated data or map layers, are available through MDP as:  
► **Paper or Digital Tax Maps**

About MdProperty View DVDs  
MdProperty View is a visually accessible desktop that allows you to interact with a jurisdiction's parcel map and parcel information using the





# FINDER >> FINDER Quantum

