

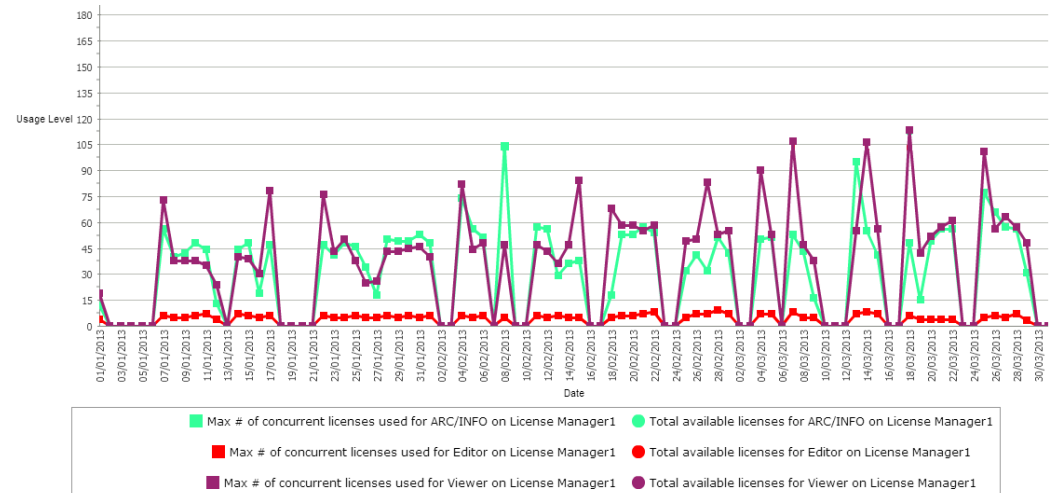
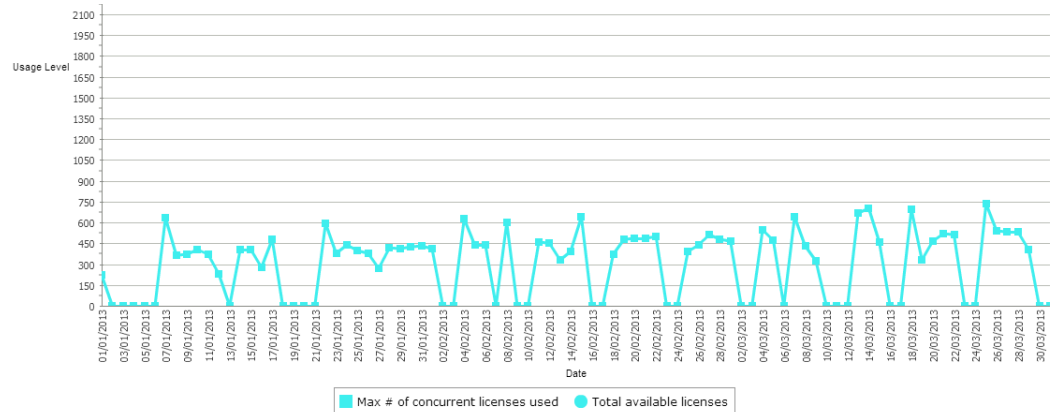
# MD iMAP UPDATES

APRIL 18, 2013



# ELA LICENSE UTILIZATION

- Maximum number of concurrent license usage: **550** (increase of 30%)
- Number of unique users: **512** (increase of 45%)
- Usage by Agencies:  
DNR (122), MDP (37), MDA (29), DLS (10)



# DATA & MAP SERVICE UPDATES

- Almost 300 services on current system has led to performance issues
- In response, unused or out-of-date map services have been deleted
- Data is available in the database
- Completed in conjunction with consolidation efforts being conducted prior to 10.1 migration

<http://imap.maryland.gov/>



@MDiMap

# DATA & MAP SERVICE UPDATES

- Continue to pursue automated processes to integrate Socrata and ArcGIS Server data



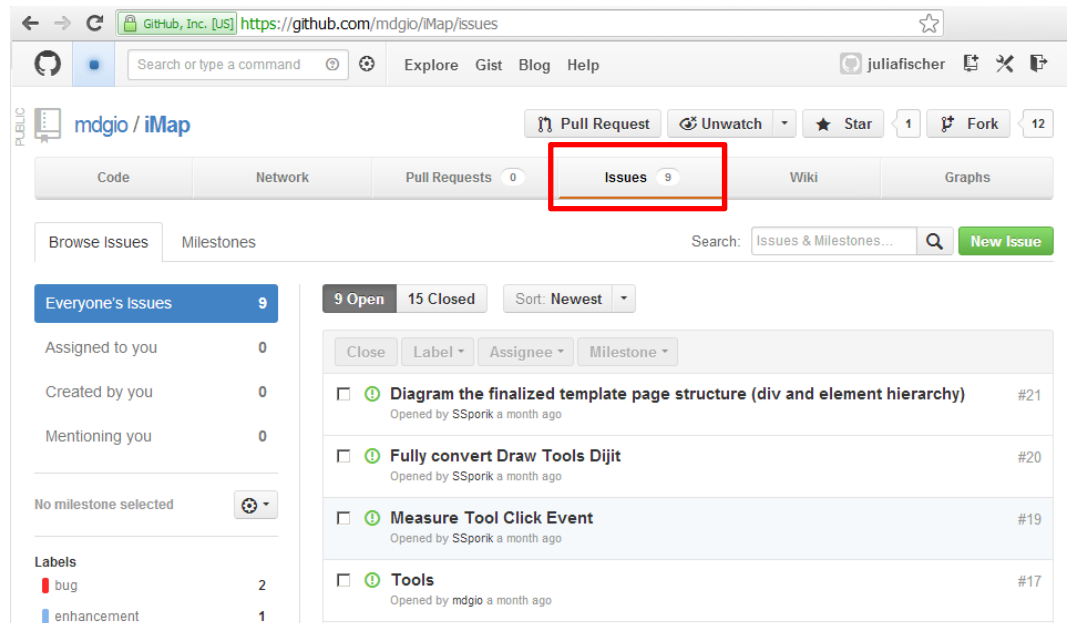
<http://imap.maryland.gov/>

twitter @MDiMap

# APPLICATION SUBCOMMITTEE

## Application Template

- Delivered in March
- Access via <https://github.com/mdgio/iMap> and under Developers tab on Portal
- Enter comments upgrade requests and/or bugs under Issues tab on github.com site



# NEW TEMPLATE EXAMPLE



## Priority Funding Areas

PFA Info | Maryland Department of Planning

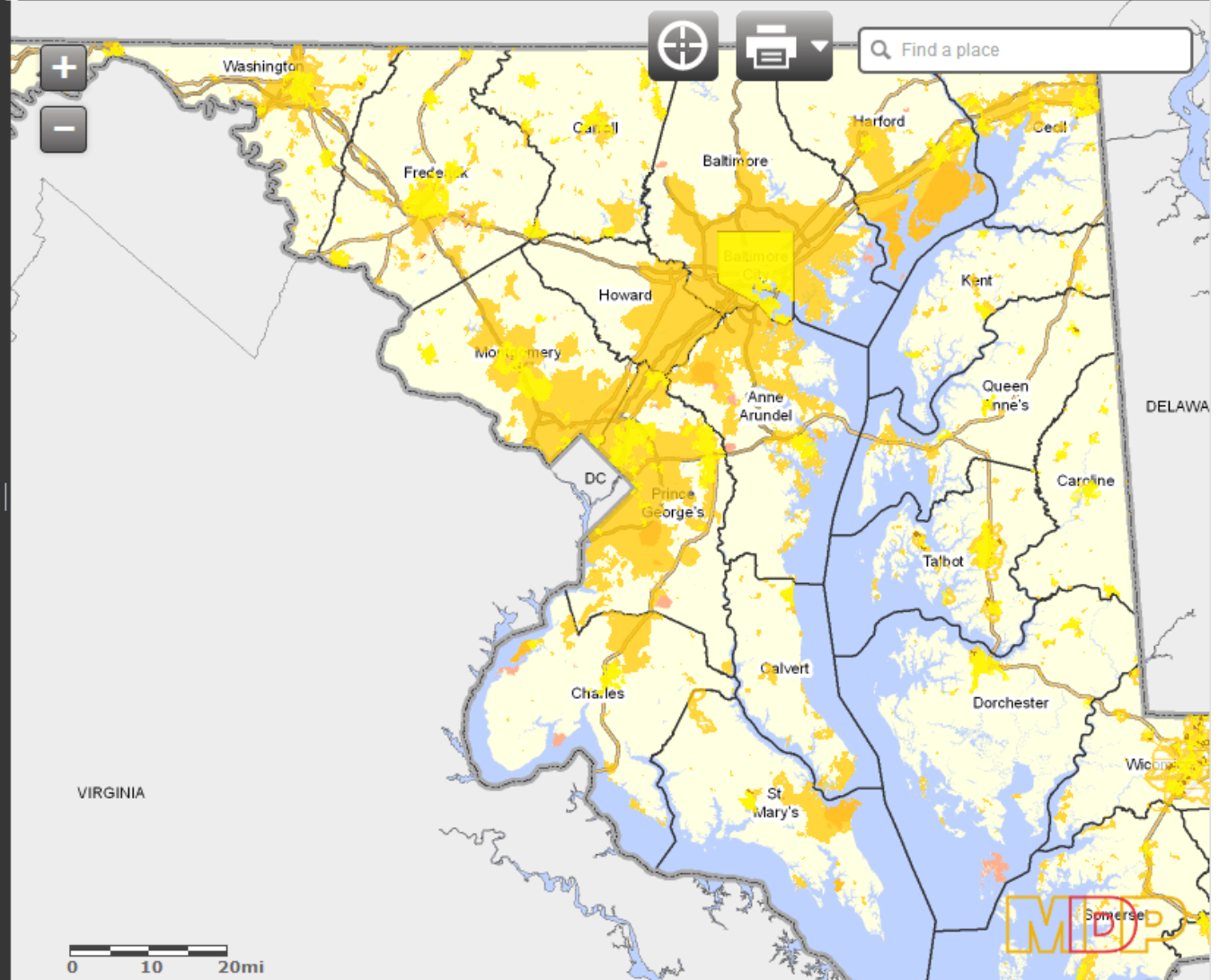
Details

Contents

The 1997 Priority Funding Areas Act capitalizes on the influence of State expenditures on economic growth and development. This legislation directs State spending to Priority Funding Areas. Priority Funding Areas are existing communities and places where local governments want State investment to support future growth.

Growth-related projects covered by the legislation include most State programs that encourage or support growth and development such as highways, sewer and water construction, economic development assistance, and State leases or construction of new office facilities.

The Priority Funding Areas legislation builds on the foundation created by the Visions which were adopted as State policy in the 1992 Economic Growth, Resource Protection and Planning Act. Beginning October 1, 1998, the State of Maryland directed funding for projects that support growth to Priority Funding Areas. Funding for projects in municipalities, other existing communities, industrial areas, and planned growth areas designated by counties receive priority State funding over other projects. Priority Funding Areas are locations where the State and local governments want to target their efforts to encourage and support economic development and new growth.





# NEW TEMPLATE EXAMPLE



## Fiscal Year 2014 Proposed Capital Budget

Maryland Gov | GIO

Overview

Additional Resources

The Fiscal Year 2014 Proposed Capital Budget includes Statewide, Regional and Individual Projects. The map displays total funding by County and details of individual projects.

**Total Fiscal Year 2014 Proposed Capital Budget:**  
**\$3,219,392,000**  
(Includes all Statewide, Regional and Individual Projects.)

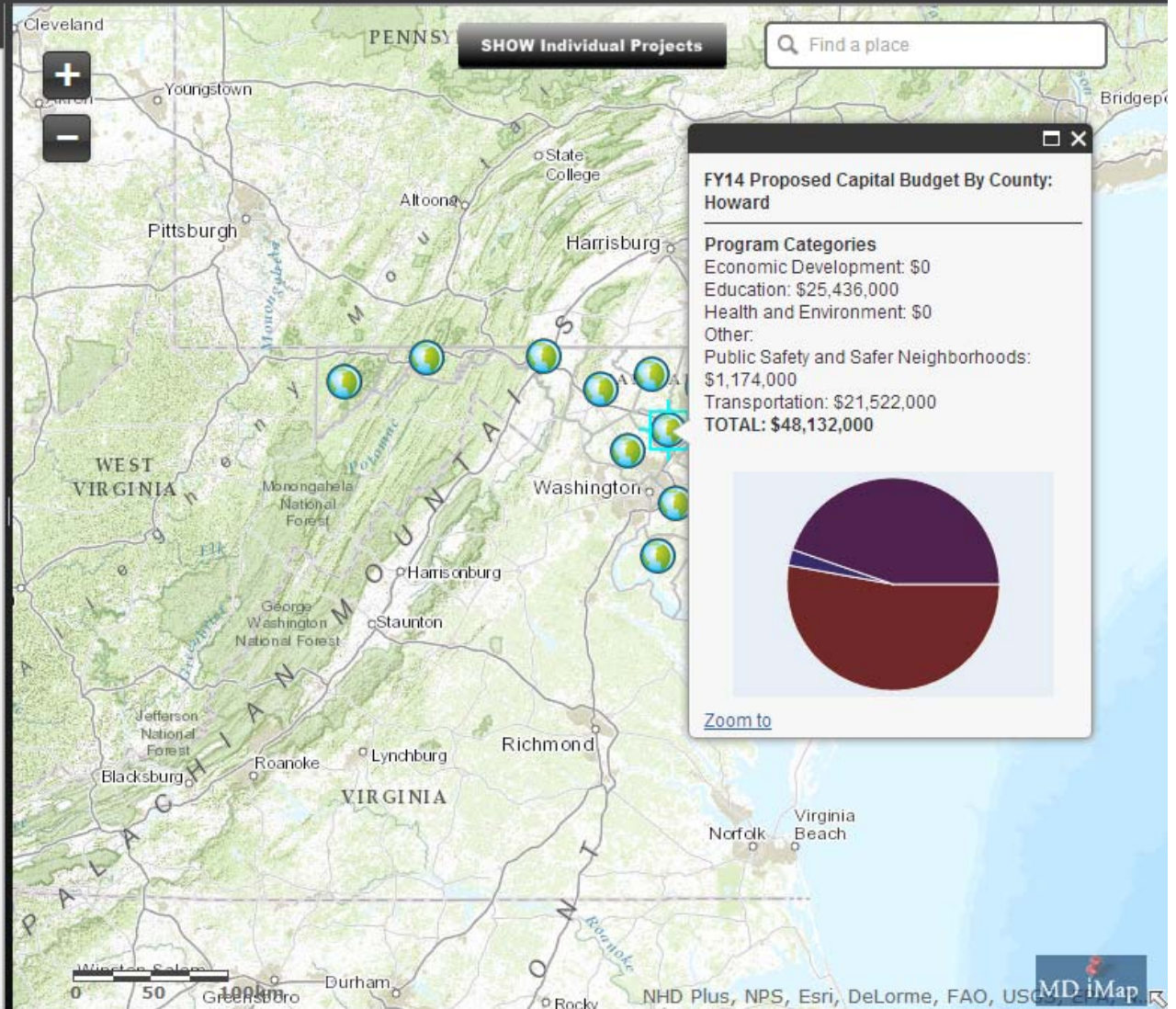
**Total Fiscal Year 2014 Proposed Capital Budget Mapped:**  
**\$1,534,752,000**  
Economic Development Total: \$31,508,000  
Education Total: \$561,205,000  
Health and Environment Total: \$314,238,000  
Other Total: \$30,090,000  
Public Safety and Safer Neighborhoods Total: \$31,111,000  
Transportation Total: \$566,600,000  
(These numbers represent the total funding for projects shown on the map for FY14.)

Individual Project categories include:

- Economic Development
- Education
- Health and Environment
- Other
- Public Safety and Safer Neighborhoods

Click on county symbols to display dollar amounts by category and pie charts with funding distribution by category.

Click on individual projects to display project name and dollar amount allocations.



# DATA & RESOURCES SUBCOMMITTEE

## Cascading Geocoder

- Now available under Geocode Services folder
  - Local Address Points\*
  - MDPV Parcel Points
  - Statewide Centerlines
  - Intersections
  - Highway Exits
  - ZIP Codes
  - Municipalities
  - Mile Markers
  - Community Anchor Institutions
  - Points of Interest
  - Places
  - Census Designated Places

<http://imap.maryland.gov/>

twitter  @MDiMap



# DATA & RESOURCES SUBCOMMITTEE

## Cascading Geocoder

- Anticipate releasing Online component soon

**Maryland Cascading Geocoder**  
*Find a location in Maryland using the search below*

**Street Address**  
A street address consists of a building number, street name, city, state, and ZIP code. A building number, street name, and ZIP code is required. Only Maryland addresses are geocoded.

Example: 600 S Rose St, Baltimore, MD, 21224 or 600 S Rose St, 21224

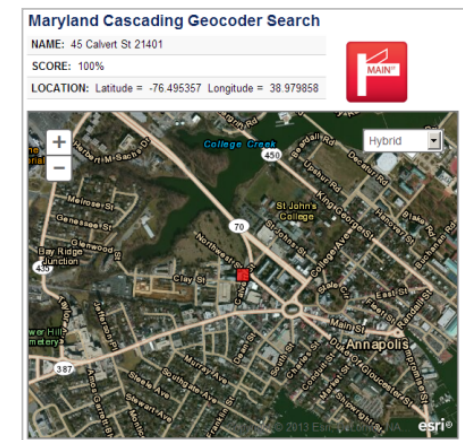
**Intersection**  
An intersection is a point where two streets connect. Street names are required. For best results, include the ZIP code where the intersection exists.

Example: Example: York Rd @ Burke Ave, 21204 or York Rd & Burke Ave, 21204 or Burke Ave & York Rd, 21204 or York Rd / Burke Ave, 21204



**Maryland Cascading Geocoder Search**  
**Search Results**  
The exact match of the location you entered could not be found. Here are the closest results available. Click on a row to see additional details.

Name	Locator	Score
<a href="#">45 Calvert St 21401</a>		100%
<a href="#">45 Calvert St, Annapolis, 21401</a>		98.38%
<a href="#">45 S Calvert St 21202</a>		90.97%
<a href="#">45 N Calvert St 21202</a>		90.97%
<a href="#">45 Calvert Ter 21742</a>		87.35%



<http://imap.maryland.gov/>

twitter  @MDiMap

# ADDITIONAL TOPICS...

- Security Policies concerning Sensitive Data
- Version 10.1 Server Migration
- Portal Migration (Anticipated: May 1)
- CityEngine

<http://imap.maryland.gov/>



@MDiMap

# UPCOMING COMMITTEE MEETING

## Executive Committee:

- Wednesday, June 26th (9:30 a.m. – 2:30p.m.)
- MDOT: Harry Hughes Conference Room
- Agenda TBD

## Technical Committee:

- Tuesday, May 7<sup>th</sup> (1 – 3p.m.) @ MDE
- Accessible via WebEx
- Participation: Open & Welcome
- Contact: Julia Fischer ([julia.fischer@maryland.gov](mailto:julia.fischer@maryland.gov))  
or Frank Siano ([fsiano@mde.state.md.us](mailto:fsiano@mde.state.md.us))

# TECHNICAL COMMITTEE MEETINGS

- Tuesday, May 7<sup>th</sup> (1 – 3p.m.) @ MDE  
(1800 Washington Blvd., Baltimore, MD 21230)
- Accessible via WebEx
- Participation: Open & Welcome
- Meetings: **1<sup>st</sup> Tuesdays of the Month**
- Contact: Julia Fischer (julia.fischer@maryland.gov)  
or Frank Siano (fsiano@mde.state.md.us)

<http://imap.maryland.gov/>



@MDiMap