

MSGIC Business Update

- Membership Survey
- FAQs re Dues Structure
- Treasurer's Report
- Continuing Education Certificates

Jim Cannistra, MDP

Doug Reedy, Frederick County



Membership Survey & Dues Structure

- February Survey
 - 133 respondents
 - 72% favorable
- Priorities
 1. GIS Advocacy
 2. Data Enhancements
 3. Technical Training
 4. Professional Networking Events



FAQs: Dues Structure

Will non-members be able to attend quarterlies?

Yes. We intend to be as inclusive as possible.

Who has access to communications and the Contacts database?

Email communications and LinkedIn groups will be open to all contacts (members and non-members). Access to the contacts database will be restricted to members only.

Who has voting rights?

Only paid members will be able to vote.

Who is eligible for student memberships?

Part time and full time students are eligible for student memberships.

Who can serve on the Executive Committee?

Only paid members will be eligible to serve on the executive committee

When will dues be implemented?

July 1 will be the official start with dues to be paid by January 1, 2014. Dues can also be paid any time before July 1.

What is the length of time for the initial dues cycle and ongoing dues cycles?

The initial term is planned for 18 months (July 2013 - December 2014). Ongoing dues are on an annual basis (January 1 - December 31).

How will invoices/payment notices be sent and how can people pay?

Invoices will be emailed as a PDF file. Invoices will not be sent to members that are included as part of a sponsor organization. MSGIC encourages sponsor and organizational tier membership to the maximum extent possible. If an organization drops its membership, dues will be converted to individual memberships.

Invoices will have 30 day payment timeframe. Reminders will be sent after 60 days. After 90 days without payment, the membership status will be flagged. Dues will be due January 1. Members will be dropped after the Spring quarterly if their dues were not paid. Dues will not be prorated.

What is reporting cycle for financial report?

A treasurer's summary will be provided at each executive meeting as needed.

Briefing will be provided at each Quarterly and included as part of the meeting minutes.

Annual Report will be produced and published on the website.



Continuing Education Certificates

Continuing Education Unit (CEU)	Nationally recognized method of quantifying time for non-credit learning. Ten hours of instruction equal one (1) CEU
How many CEUs should be awarded for a program	One-tenth (0.1) of a CEU is awarded for each hour of instruction. Excludes breaks and business and committee meetings.
Who keeps the permanent records of CEU?	Maintenance of records is the responsibility the MSGIC Outreach and Education Subcommittee.
Which colleges give credit for CEUs?	The CEU relates only to non-credit continuing education.
What are the attendance requirements in order to receive CEU credit(s)?	Each participant will sign at the event. Participants must attend the entire event for which they registered. Certificates will provided electronically upon request.



Maryland Data Updates

- Imagery
- Parcels
- Septic Tier Mapping

Jim Cannistra, MDP



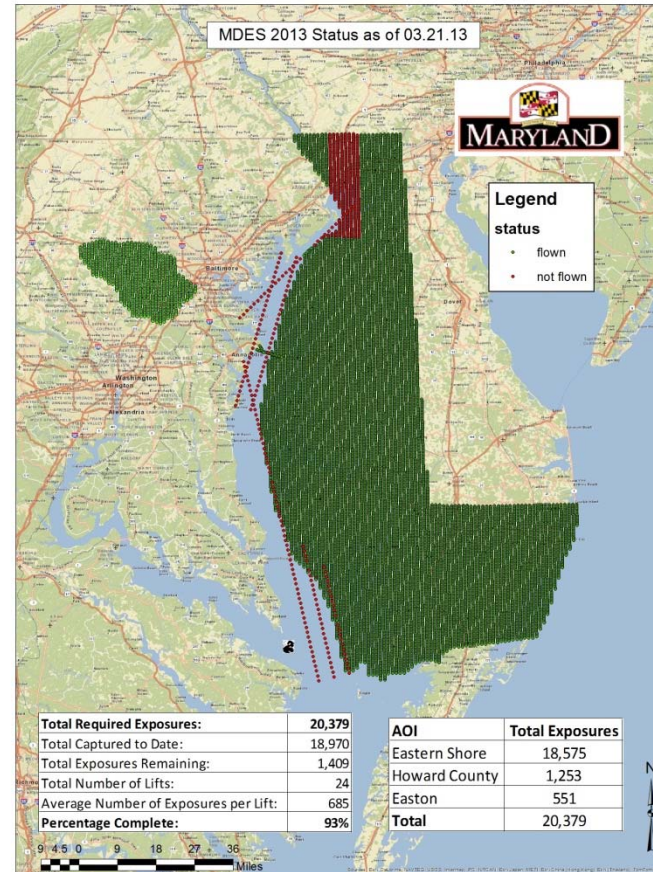
Statewide Orthoimagery

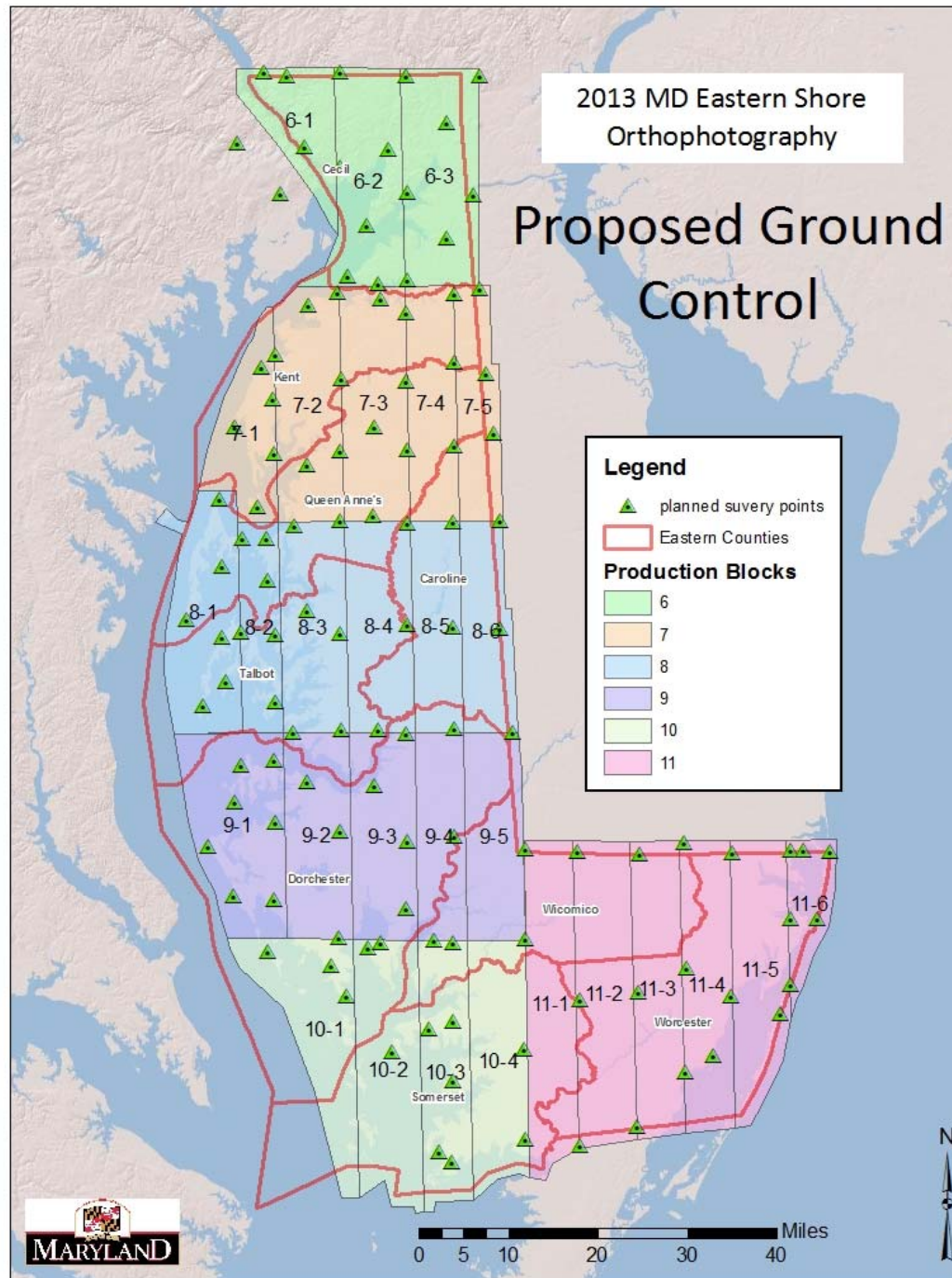
2013 Orthoimagery

- 6" resolution
- Eastern shore & Howard County
- Multispectral Imagery

Funding by Emergency
Systems Numbers Board
Program Management by
MDP & DOIT

County QA/QC Support
Public Domain Data





Imagery Schedule

2013 Maryland Eastern Shore Orthophotography Delivery Schedule							
Production Block	Number of Tiles	Aerial Triangulation Completed	Preliminary Delivery	Independent QAQC Completed	Stakholder QAQC Completed	Final Data Corrections Completed	Final Deliverables
Pilot	20	06/13/13	06/15/13	06/20/13	06/25/13	06/28/13	07/02/13
11	926	06/13/13	07/25/13	08/07/13	09/06/13	09/11/13	09/18/13
10	1004	07/05/13	08/10/13	08/29/13	09/29/13	09/29/13	10/05/13
9	1071	07/25/13	08/25/13	09/11/13	10/11/13	10/16/13	10/23/13
8	1112	08/21/13	09/30/13	10/15/13	11/15/13	11/20/13	11/27/13
7	926	09/04/13	10/21/13	11/04/13	12/04/13	12/09/13	12/16/13
6	569	09/12/13	10/31/13	11/16/13	12/10/13	12/13/13	12/20/13
Howard County	325	05/31/13	07/30/13	08/23/13	09/23/13	09/26/13	10/03/13
High Level Bay		08/12/13	10/31/13	11/16/13	12/10/13	12/13/13	12/20/13
Easton 3"	120	07/15/13	10/07/13	10/18/13	10/31/13	11/08/13	11/15/13



Maryland State Geographic
Information Committee

Future Imagery

- Western Shore 2014
- New RFP & Contracting
- Technical Subcommittee
- Options for consideration
 - LiDAR
 - Oblique
 - True Orthos
 - Planimetric (updates or new)
 - Topo (generation from LiDAR)
 - Land cover



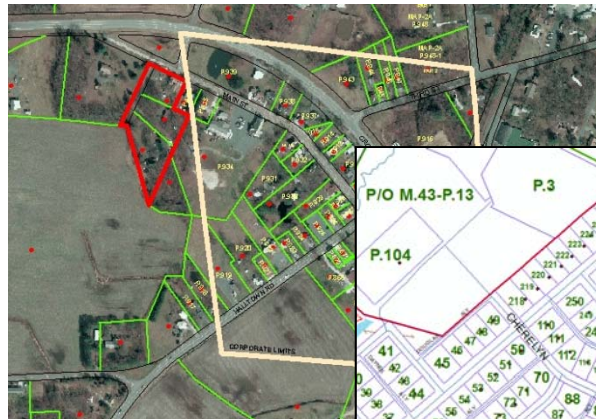
MDP / County Integrated Parcel Initiatives

2012

- Caroline
- Dorchester
- Talbot
- Queen Anne's
- Calvert
- Kent
- Washington
- Garrett
- Baltimore City
- Somerset

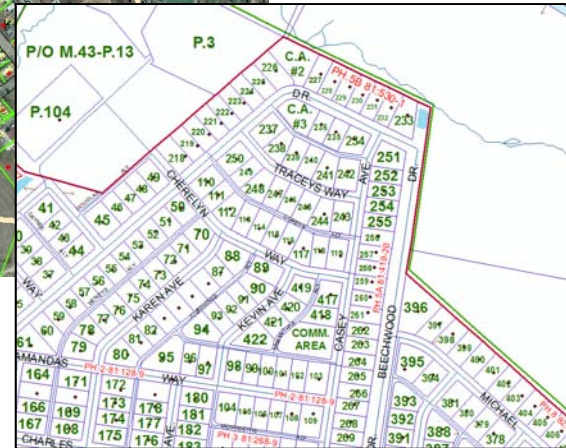
2013

- Worcester
- Wicomico
- Allegany
- Charles



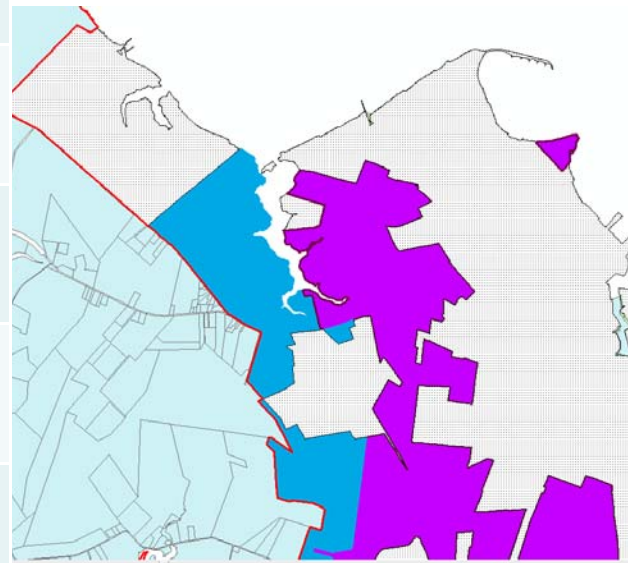
2014

- Cecil
- Howard
- Harford
- Carroll
- St. Mary's



Data Realignment

Layer	No. Jurisdictions Compete
PFA	15
Municipal Bdys	22
Sewer	21
Protected Lands	12
Zoning	7 complete 4 underway
Growth Areas	Comprehensive Update
Priority Preservation Areas	5 (out of 15 w/PPAs)



Sustainable Growth and Agricultural Preservation Act (2012)

13 Counties/64 Municipalities have adopted maps

Local jurisdictions map 4 growth tiers

- **Tier 1: Sewer Service**
- **Tier 2: Planned Sewer/Growth Areas**
- **Tier 3: Septic Growth**
- **Tier 4: Resource Conservation**

MDP Assistance:

- **Published Online Mapping Application to identify tiers**
- **Reviewed draft maps for 20 counties /36 municipalities**
- **Provided GIS Technical Assistance**
- **Coordinated GIS data updates**



<http://www.mdp.state.md.us/OurWork/septicsIMapImp.shtml>

Septic Tier Adoption Status

