

# MD iMAP UPDATES

OCTOBER 17, 2012



# MD iMAP NEXT GENERATION

- Redevelop existing applications for multiple platforms (HTML5) pointing to new data
- Create new ArcGIS 10.1 environment
- Review all data and migrate to the new environment
  - Features Services
  - Web Mercator
- Portal Makeover
- Gradually migrate MD iMap to MD iMap NG



# MD iMAP NEXT GENERATION

## iMap

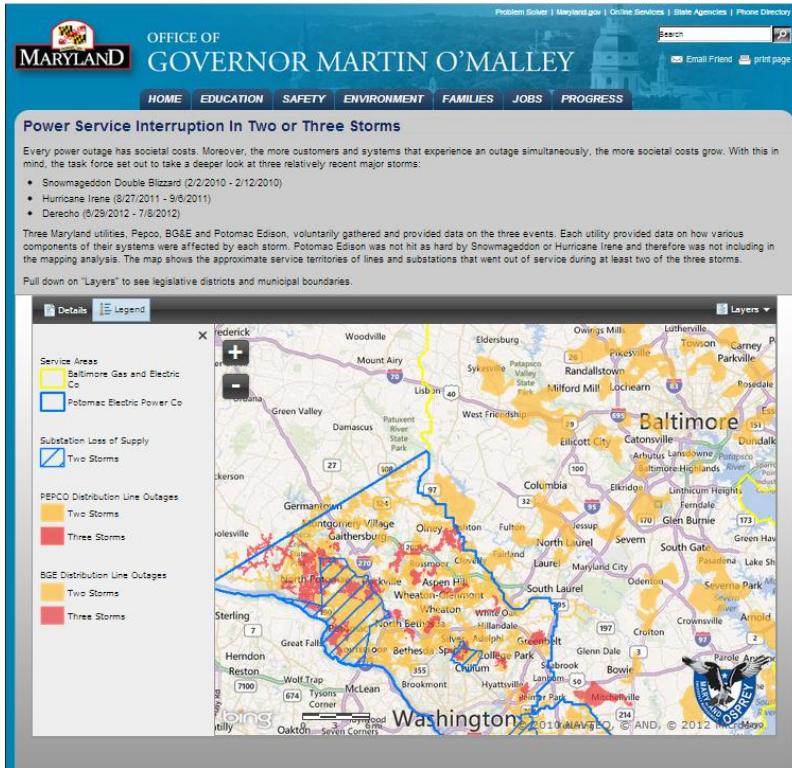
- AGS 10.0
- Towson CGIS
- Continues to operate
- Existing services only
- Variety of viewers
  - Flex, JavaScript, Silverlight
- Shut down after conversion (~1 year)

## iMap NG

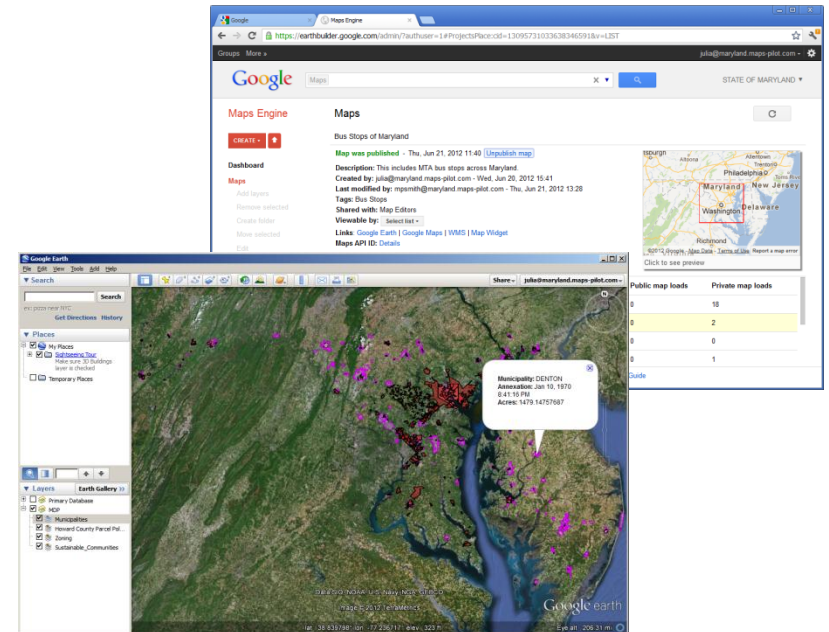
- AGS 10.1
- Hybrid Approach
  - CGIS, Cloud, DoIT
- New Data Structure
  - Migrate select existing
  - New services
- HTML 5 / JavaScript viewers (cross platform)

# DATA SHARING OPPORTUNITIES

## ArcGIS Online for MD



## Google Maps Engine



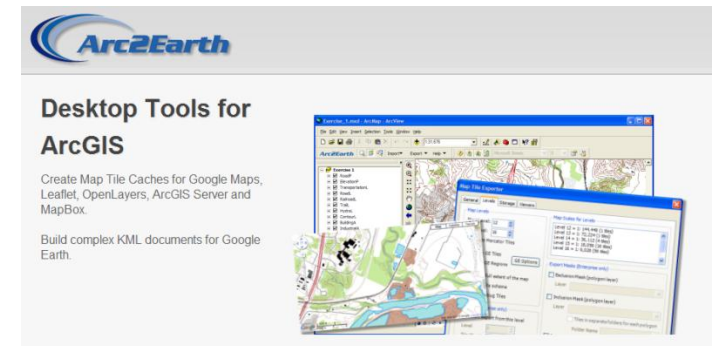
<http://imap.maryland.gov/>

twitter @MDiMap

# DATA SHARING OPPORTUNITIES

## Arc2Earth

- ArcMap extension which converts data to .kml
- Additional capabilities include:
  - Scale dependent rendering
  - Symbology
  - Enhanced pop-up generation



<http://imap.maryland.gov/>

twitter  @MDiMap



# DATA SHARING OPPORTUNITIES

## Socrata

- Data sharing portal for spatial and non-spatial data
- CGIS developing integration capability with REST endpoint

The screenshot shows the MARYLAND STATESTAT website. The header includes the Maryland state logo and the text "GOVERNOR O'MALLEY'S STATESTAT". Navigation links at the top right include "Problem Solver", "Maryland.gov", "Online Services", "State Agencies", and "Phone Directory".

The main content area is titled "Search & Browse Datasets and Views". It features a search bar and a "Most Relevant" dropdown. Below this is a table of datasets and views:

Name	Popularity	Type
21. <b>Students Eligible for Free and Reduced Meals by County (2010-2011 School Year)</b> Human Services childhood hunger, student meals The official number of students eligible for free and reduced meals by county and percent of	9 views	Dataset
22. <b>Participation in Free and Reduced Meal Programs</b> Health and Human Services childhood The Governor's Strategic Goal 12 is to end childhood hunger in Maryland by the end of 2015.	9 views	Dataset
23. <b>Renewable Energy Generation</b> Energy and Environment renewable energy, statestat The Governor's Strategic Policy Goal 10 is to increase Maryland's in-state renewable generation	8 views	Dataset
24. <b>Maryland Solar Projects</b> Original source:	22 views	Dataset
25. <b>GDU Goal 3: Skills, Key Metric A</b> Education Source data for the first visualization on the GDU Goal 3 page.	9 views	Dataset
26. <b>Maryland Port Administration General Cargo</b> Transportation port of baltimore, maryland port administration, ... Maryland Port Administration General Cargo Monthly Data for the MPA's public terminals	9 views	Dataset
27. <b>Greenhouse Gas Emissions in Maryland</b> Energy and Environment greenhouse gas, emissions, carbon This dataset includes actual emissions as measured by a combination of fuel sales and	8 views	Dataset
28. <b>Maryland Annual Vehicle Miles of Travel</b> Transportation vehicle miles of travel Annual Vehicle Miles of Travel (AVMT) represents the estimated number of miles driven on	17 views	Dataset
29. <b>Maryland Counties</b>	6 views	Dataset
30. <b>Acute Care Hospitals with Live VPN Connections</b> Health and Human Services	6 views	Dataset

Below the table is a pagination bar showing "Showing 10 of 100". At the bottom, there is a search suggestion bar that says "Didn't find what you're looking for? Suggest a dataset." with a "Suggest" button. The footer includes links for "Contact the Office", "Accessibility", "Privacy Notice", "Terms of Use", and "Powered by Socrata".

<http://imap.maryland.gov/>

twitter @MDiMap

# DATA UPDATES

## Map Service News

- Updated Maps Services
  - Sustainable Communities
  - Priority Preservation Areas
  - Arts & Entertainment Districts
  - Unemployment Rates
  - Enterprise Zones
  - Bay Trust Fund
  - All MDP Services
  - Energy Conservation

# APPLICATION UPDATES

## Application News

- New Applications:



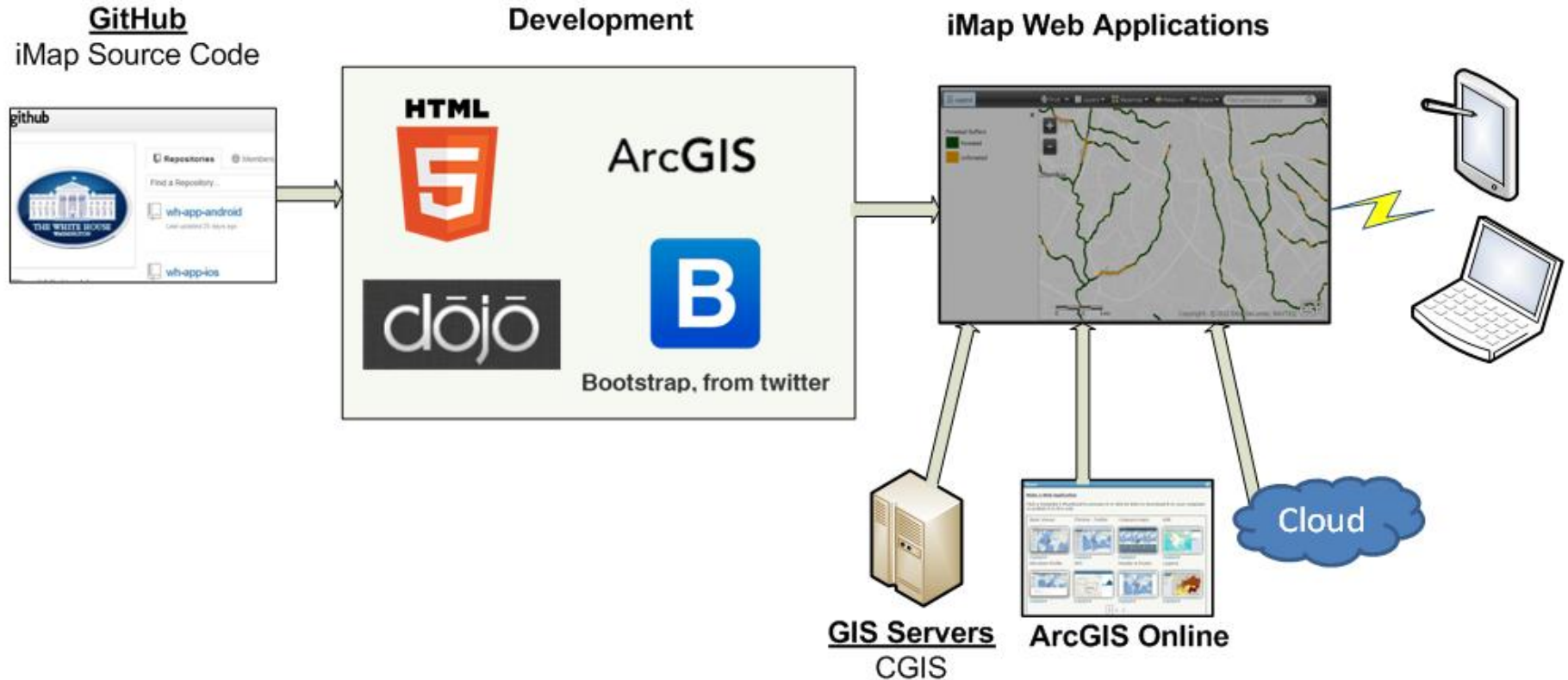


# APPLICATION UPDATES

- Programming language that works on Desktops, Tablets & Smartphones
- Developing web standards, no browser plug-ins
- MD iMap Templates
- Common set of tools
- ArcGIS Online capable



# APPLICATION UPDATES



<http://imap.maryland.gov/>

twitter @MDiMap

# PORTAL UPDATES

## WFS Enabled Data

- Instructions and list of available map services provided on the Portal
  - Portal > Help

### *Instructions for Accessing Data from WFS-Enabled Web Services*

1. Go to ArcGISToolbox > Conversion Tools > From WFS > WFS to Feature Class
2. Enter the full URL of the WFS Service
3. Click the dropdown for Select FEature Type to Extract to select the specific map service to extract
4. Enter the output location of the database for the data to be extracted
5. Enter the feature class name for the data to be extracted
6. Click OK

Please remember that the data to be extracted is a snapshot only. Check back periodically to make sure you are working with the most up-to-date and accurate version.  
For a list of currently available WFS-Enabled Web Services, click [here](#).

Folder Name	Service Name	Service URL
Boundaries	Community Legacy Areas	<a href="http://mdimap.us/ArcGIS/rest/services/Boundaries/MD.State.CommunityLegacyAreas/MapServer">http://mdimap.us/ArcGIS/rest/services/Boundaries/MD.State.CommunityLegacyAreas/MapServer</a>
Boundaries	Congressional Districts 2011	<a href="http://mdimap.us/ArcGIS/rest/services/Boundaries/MD.State.CongressionalDistricts.2011/MapServer">http://mdimap.us/ArcGIS/rest/services/Boundaries/MD.State.CongressionalDistricts.2011/MapServer</a>
Boundaries	Designated Neighborhoods	<a href="http://mdimap.us/ArcGIS/rest/services/Boundaries/MD.State.DesignatedNeighborhoods/MapServer">http://mdimap.us/ArcGIS/rest/services/Boundaries/MD.State.DesignatedNeighborhoods/MapServer</a>
Boundaries	Main Street Areas	<a href="http://mdimap.us/ArcGIS/rest/services/Boundaries/MD.State.MainStreetAreas/MapServer">http://mdimap.us/ArcGIS/rest/services/Boundaries/MD.State.MainStreetAreas/MapServer</a>
Boundaries	Maple Street Areas	<a href="http://mdimap.us/ArcGIS/rest/services/Boundaries/MD.State.MapleStreetAreas/MapServer">http://mdimap.us/ArcGIS/rest/services/Boundaries/MD.State.MapleStreetAreas/MapServer</a>
Boundaries	Outer Continental Shelf Blocks	<a href="http://mdimap.us/ArcGIS/rest/services/Boundaries/MD.State.OuterContinentalShelfBlocks/MapServer">http://mdimap.us/ArcGIS/rest/services/Boundaries/MD.State.OuterContinentalShelfBlocks/MapServer</a>
ClimatologyMeterologyAtmosphere	Ocean Wind Rose	<a href="http://mdimap.us/ArcGIS/rest/services/ClimatologyMeteorologyAtmosphere/MD.State.OceanWindRose/MapServer">http://mdimap.us/ArcGIS/rest/services/ClimatologyMeteorologyAtmosphere/MD.State.OceanWindRose/MapServer</a>
ClimatologyMeterologyAtmosphere	Ocean Wind Speed 100 meters	<a href="http://mdimap.us/ArcGIS/rest/services/ClimatologyMeteorologyAtmosphere/MD.State.OceanWindSpeed100m/MapServer">http://mdimap.us/ArcGIS/rest/services/ClimatologyMeteorologyAtmosphere/MD.State.OceanWindSpeed100m/MapServer</a>
ClimatologyMeterologyAtmosphere	Ocean Wind Speed 30 meters	<a href="http://mdimap.us/ArcGIS/rest/services/ClimatologyMeteorologyAtmosphere/MD.State.OceanWindSpeed30m/MapServer">http://mdimap.us/ArcGIS/rest/services/ClimatologyMeteorologyAtmosphere/MD.State.OceanWindSpeed30m/MapServer</a>
ClimatologyMeterologyAtmosphere	Ocean Wind Speed 50 meters	<a href="http://mdimap.us/ArcGIS/rest/services/ClimatologyMeteorologyAtmosphere/MD.State.OceanWindSpeed50m/MapServer">http://mdimap.us/ArcGIS/rest/services/ClimatologyMeteorologyAtmosphere/MD.State.OceanWindSpeed50m/MapServer</a>

<http://imap.maryland.gov/>



@MDiMap

# PORTAL UPDATES

## Migrate MD iMap Portal Website Timeline:

- Currently being redeveloped in SharePoint
- Re-launch anticipated early 2013
- Redesign phased in through remainder of 2013

<http://imap.maryland.gov/>

 @MDiMap

# COMMITTEE UPDATES

## Executive Committee Meeting

- Tuesday, October 9<sup>th</sup> (9 – 2:30p.m.) @ MDOT
- Approximately: 45 attendees
- Topics Covered:
  - Ethics
  - Budget Review
  - Communication Plan
  - TUgis 2013 Conference
  - Eastern Shore Imagery
  - Executive Order Review
  - Technical Committee Update
  - Next Generation Plans
  - Addressing Initiative
  - Master Geospatial Services Contract

<http://imap.maryland.gov/> |

 @MDiMap

# COMMITTEE UPDATES

## Next Technical Committee Meeting

- Tuesday, November 20<sup>th</sup> (1 – 3p.m.) @ MDE (1800 Washington Blvd., Baltimore, MD 21230)
- Call-in Number: 410-537-4281
- Participation: Open & Welcome
- Meetings: **1<sup>st</sup> Tuesdays of the Month**
- Contact: Julia Fischer (julia.fischer@maryland.gov) or Frank Siano (fsiano@mde.state.md.us)

<http://imap.maryland.gov/>

 @MDiMap



Julia Fischer  
Senior GIS Analyst  
Geographic Information Office  
Department of Information Technology  
410-260-7062  
julia.fischer@maryland.gov

<http://imap.maryland.gov/>

twitter  @MDiMap