

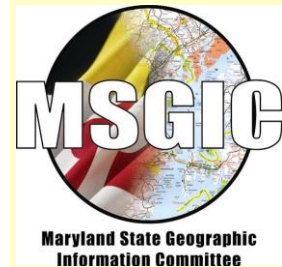
Maryland 2013 Orthoimagery

Jim Cannistra, MDP

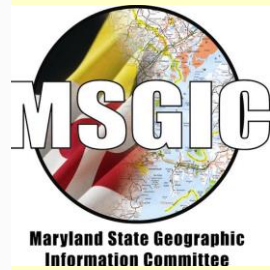
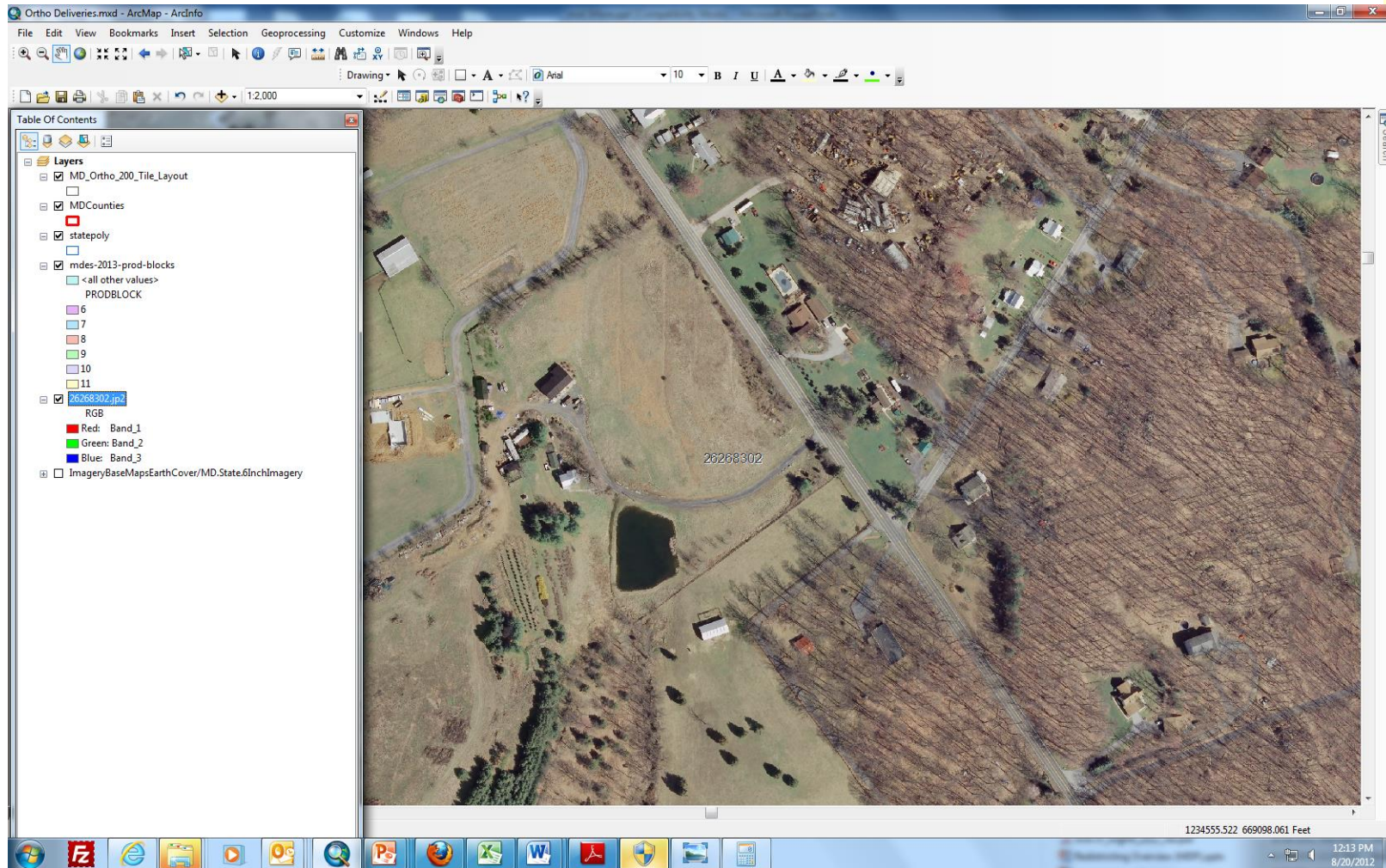


Base Specifications

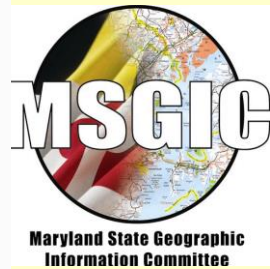
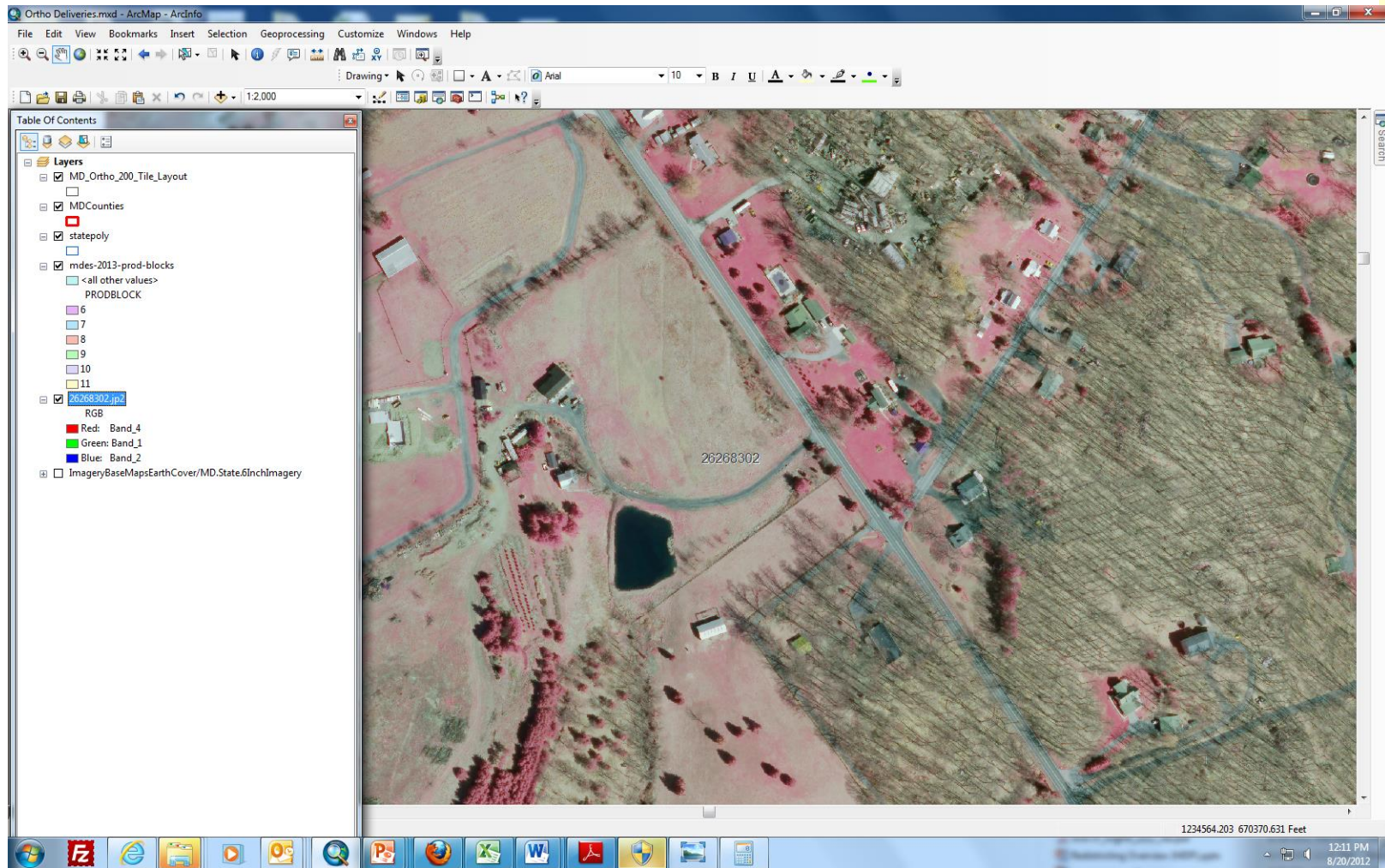
- 6" / 0.5' GSD
- ASPRS Class I for 200' scale maps
- 9 Counties
 - 3350 sq. mi / 435,000 pop. / 275,000 parcels
- Buffer
 - 2500' buffer into Chesapeake
 - 1000' buffer other areas – no full tiles
- 4- band GeoTIFF format (w/world file)
 - Ft (primary) meters (secondary) deliverables
 - 4000' * 6000' tiles
- Compressed imagery
 - JPEG (4-band) – meters and feet world files
 - SID (3-band) – meters and feet world files
 - ECW(3 band) – meters and feet world files



Imagery



Imagery



Schedule

- Approval from ENSB October
- Flying Feb 15th – April 15th
- December 31, 2013 completion
- Production blocks deliveries
- 2 Week QC turnaround



Orthoimagery Buy ups

- 100' scale /0.25' GSD
- Near True orthos
 - 0.25' or 0.5' GSD
- Geodetic Network Enhancement
- LiDAR
- Hydro Breaklines
- Oblique Imagery

BUY UP DECISIONS BY 11/30



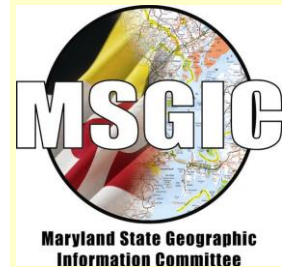
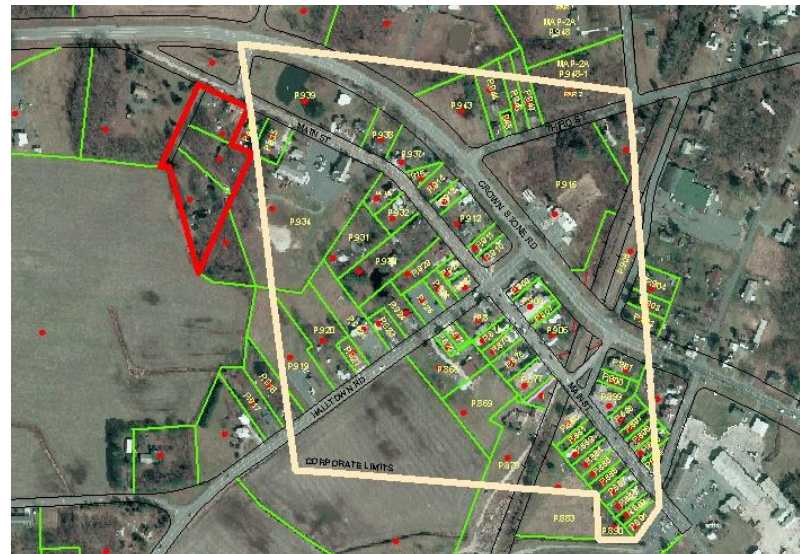
MDP / County Integrated Parcel Initiatives

2012

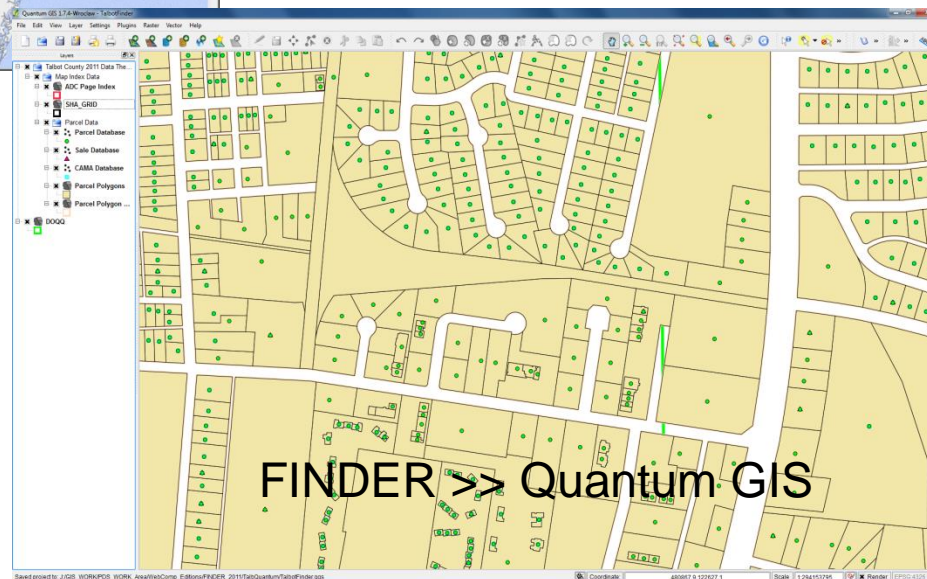
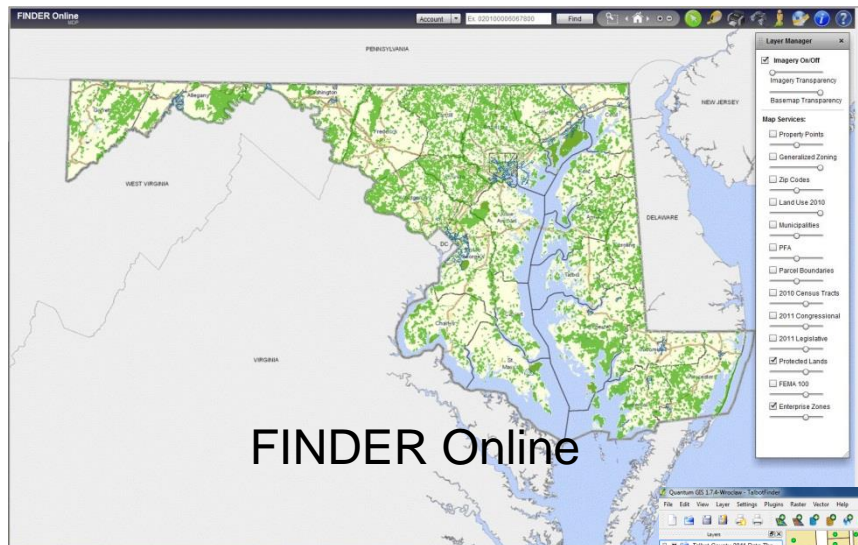
- Caroline
- Dorchester
- Talbot
- Queen Anne's
- Calvert
- Kent
- Washington
- Garrett
- Baltimore City
- Somerset

2013

- Worcester
- Wicomico
- Allegany
- Charles



MPV Product Enhancements

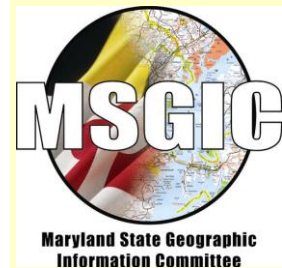
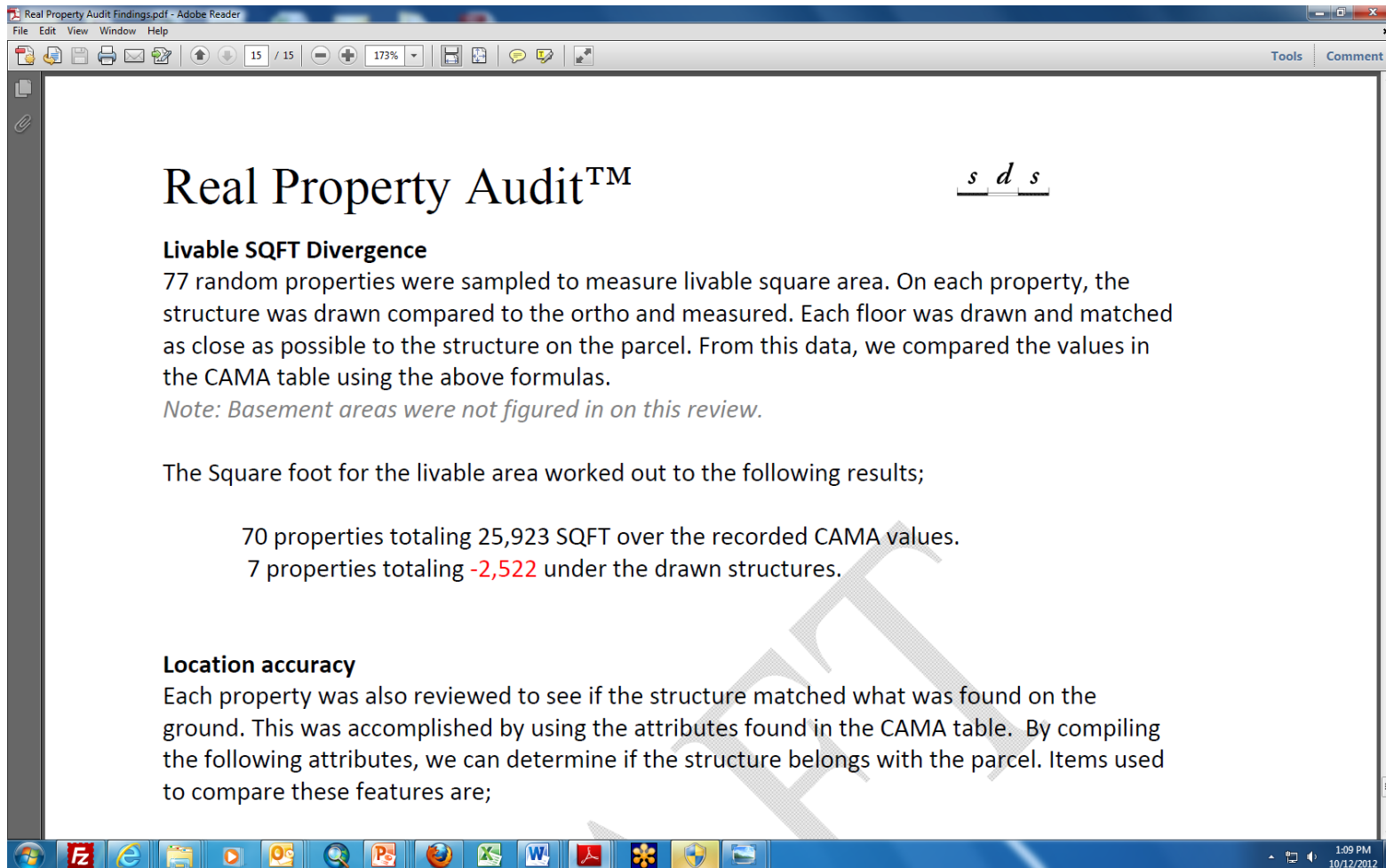


FGDC CAP Grant

- Review of Other State's Activities
- Data Audit
- Requirements Workshops
- Document Requirements
- Develop 3-5 Year Implementation Strategy
 - Business model
 - Implementation phasing
 - Technical

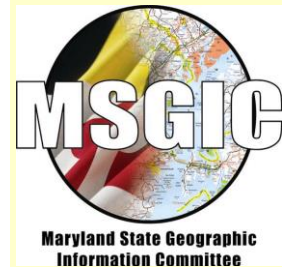


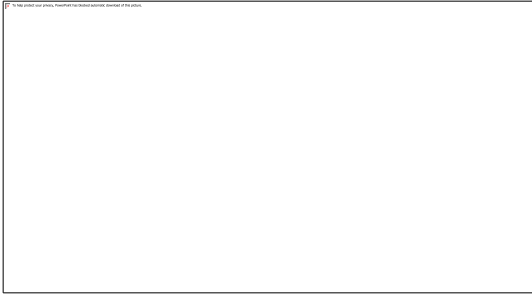
Data Audit



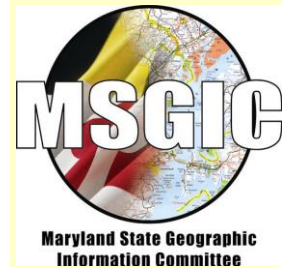
TuGIS 2013 Conference

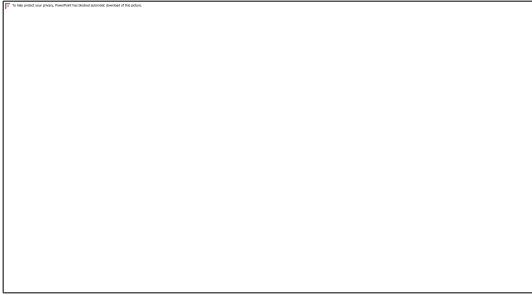
Mark Helmken, CGIS @ Towson
University



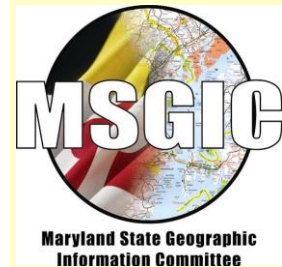


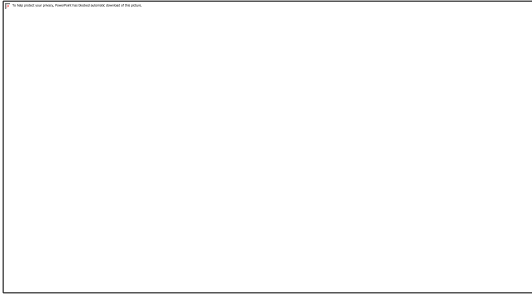
- Advisory Committee Started meeting in July
 - Dr. Virginia Thompson, Chair Geography Dept.
 - GIO
 - MSGIC
 - CGIS
 - Previous Advisory Board
- First Email blast October 4
 - One day March 19, 2013
 - Lower (much) cost (individuals and vendor)
 - New offerings
 - New setting (Student Union & College of Liberal Arts)





- Agenda (8:30 – 5:00)
 - Plenary: Student Union
 - Keynote Speaker
 - State of Maryland GIS (GIO & MSGIC)
 - 3 Concurrent - 90 Minute Sessions
 - Hands-on Lab
 - Two paper sessions
 - Poster session
 - Box lunch in Vendor area
 - Post Conference Social (TBD)





- Web Site Update
- Call for papers November 12th (two reminders)
- Email lists
 - Tried to remove duplicates
 - Preferred email address
 - Contact: mhelmken@towson.edu

