



National Capital Region Geospatial Data Exchange

Robert Horne

Program Manager for Geospatial Intelligence
Office of the Chief Technology Officer – Washington, DC
Chair – COG GIS Committee

Heidi Hammel

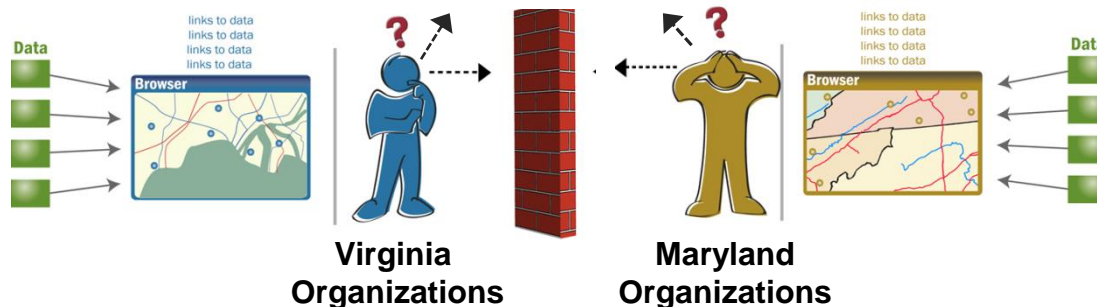
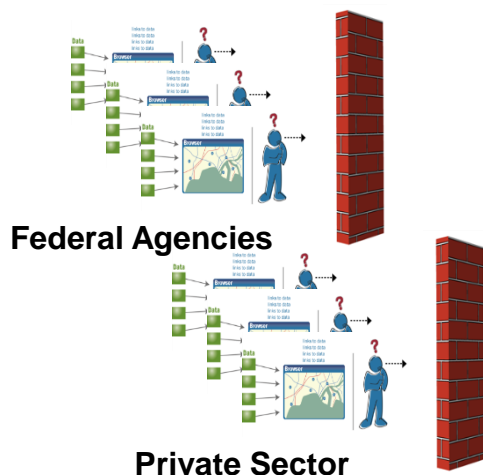
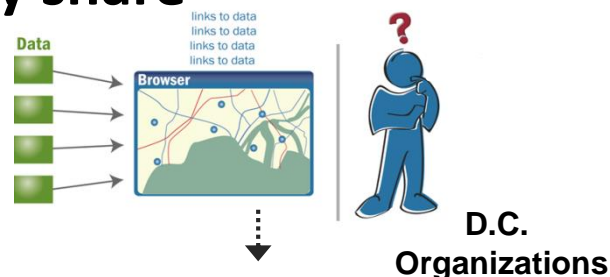
Associate Director, Geospatial Solutions Practice
KCI Technologies



Why Are We Still Sharing Paper Maps?

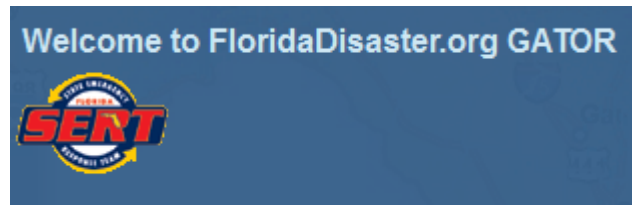
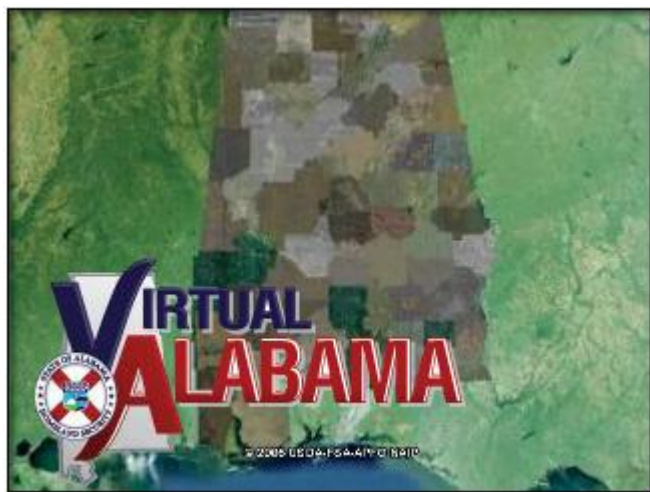
Still need ability to easily & securely share situational awareness information:

- Across NCR States & D.C.
- Between agencies at different levels of government with common response missions



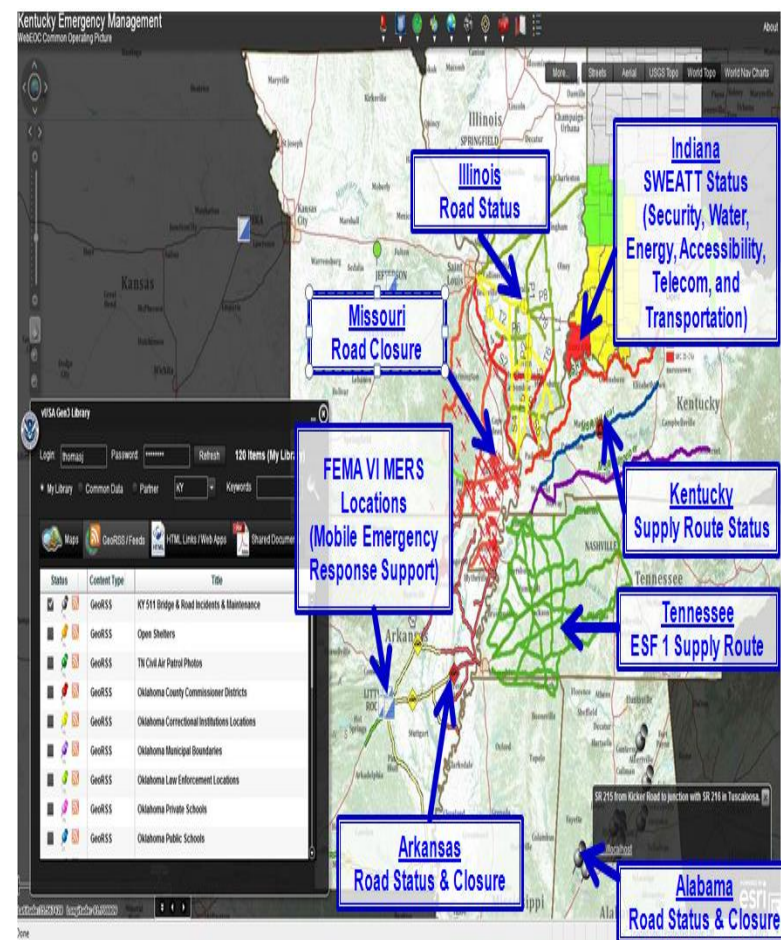


There Must Be A Better Way!



What is Virtual USA?

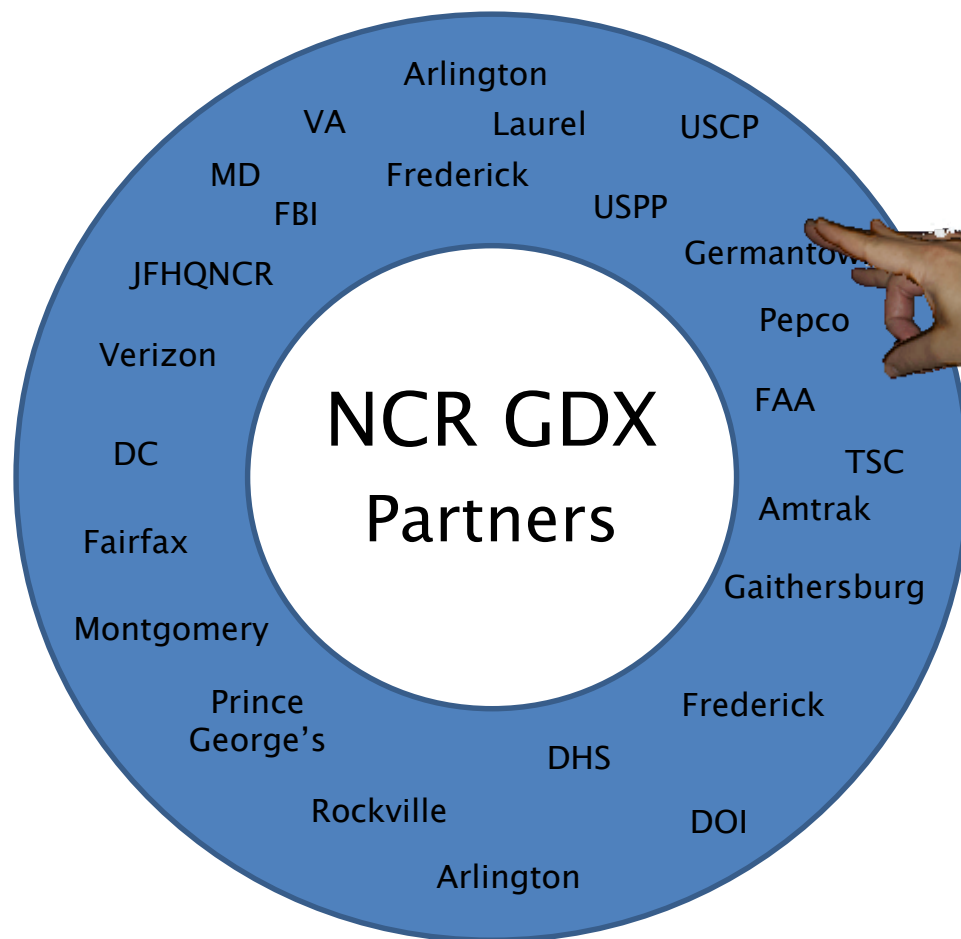
- Virtual USA® (vUSA) is a tool that enables information sharing across jurisdictional boundaries through existing and emerging technologies.
- Information commonly shared amongst vUSA partners, known as data layers, include: road closures, hospital status, aerial images, and more.
- Conceived, developed, and field-tested by emergency responders, four principles guided the creation of vUSA:
 - Improve sharing and collaboration at all government levels
 - Build on existing investments
 - Maintain data ownership
 - Partner to ensure resiliency



The Next Best Thing!

vUSA Hierarchy

- ~~Federal~~
 - ~~State~~
 - ~~Local~~
 - Agency



Pepco



Why is Membership *Currently* Free?

Grant from U.S. Department of Homeland Security (DHS)

Purpose:

- Establish secure ability to share data across MD–VA–DC region
 - Between jurisdictions, levels of government and organizations
 - Between agencies and responders
- Exploit live web services to discover and consume data
- Build upon existing interoperability initiatives
- Use vUSA framework developed for DHS
- Utilize input for MD–VA–DC Stakeholders to customize vUSA



What is NCR GDX?

It is NOT:

- Another data viewer
- An alternative to an existing interoperability initiative or system
- Not just for GIS
- THIS IS NOT A COMMON OPERATING PICTURE APPLICATION!



What is NCR GDX?

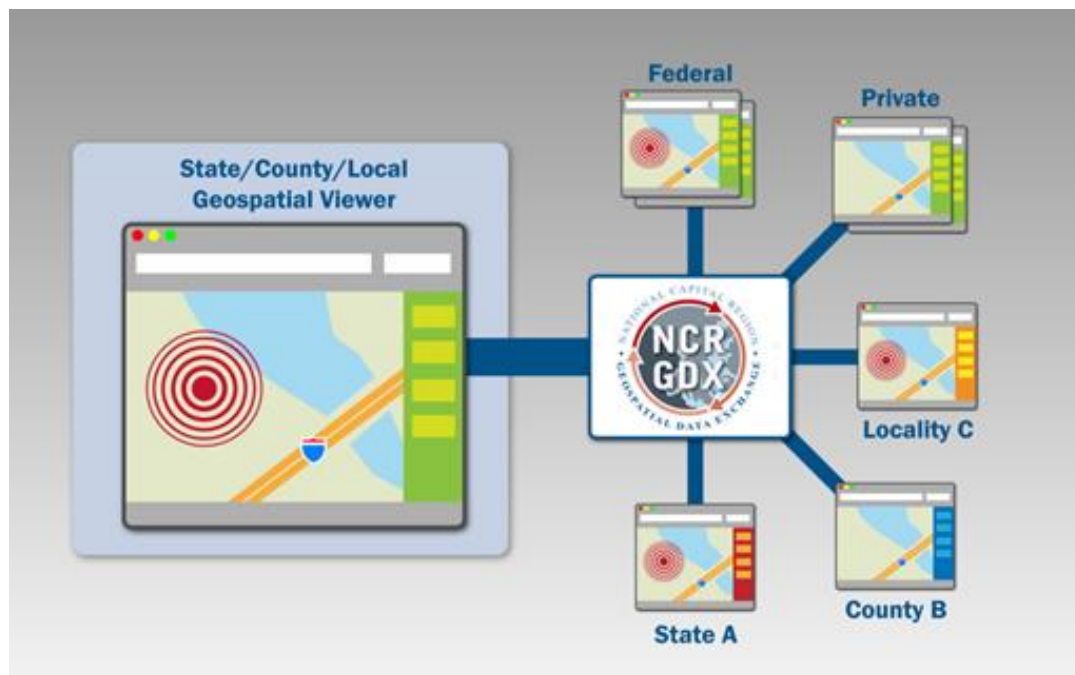
It IS:

- An enabler of data

A secure data exchange broker

& web services

- Supports:
 - GIS
 - CAD
 - WebEOC
 - Video
 - Static documents
- Accessible from within existing systems
 - VIPER,
 - EMMA,
 - ISAVE, etc.



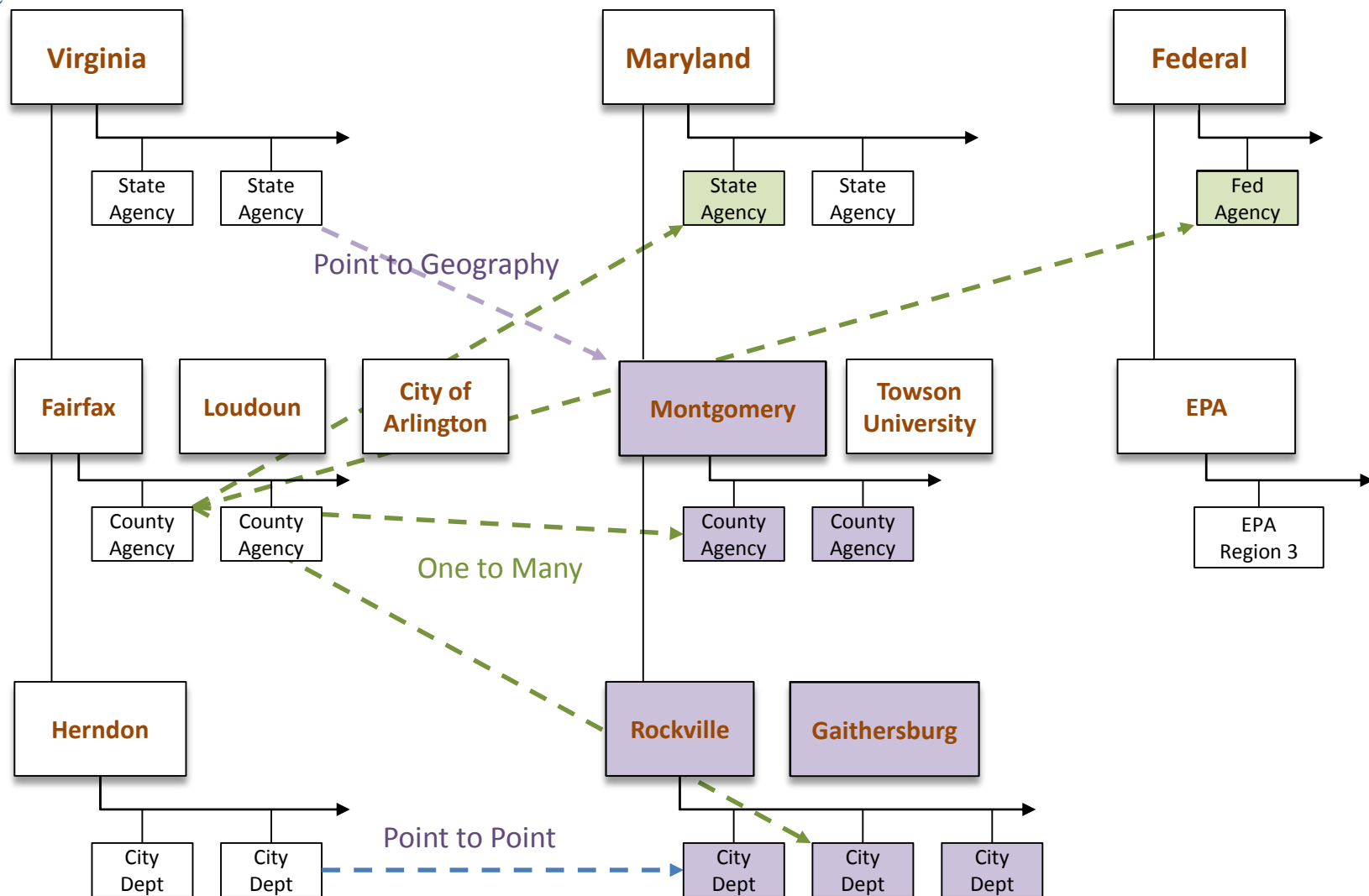


Data Sharing Security

NCR GDX provides 4 controls for achieving security around data sharing:

- Share Time Limits
- URL Proxies
- Organizational Controls
- Role-based Controls

We Take the 'Even Playing Field' Concept Seriously





What Can MSGIC Do?

- Become involved in your regional node implementation
 - Contact DHS S&T to discover participating organizations in your jurisdiction
 - Petition DHS S&T to build your regional node
- DHS S&T does not have a Transition Plan
- DHS CIO does not want to take ownership of the project
 - No Institutionalization
 - No National Governance
- MSGIC, along with other multi-jurisdictional representative groups MUST lobby DHS to transition vUSA into the DHS CIO Office



Questions / Comments?

Robert Horne

Program Manager for Geospatial Intelligence
Office of the Chief Technology Officer – Washington, DC
Chair – COG GIS Committee
robert.horne@dc.gov

Heidi Hammel

Project Manager
Associate Director for Geospatial Solutions
KCI Technologies
Heidi.Hammel@kci.com

<http://ncrgde.kci.com>