



# MSGIC Business Meeting

Julie Spangler, GISP

# Water Supply Information & Permitting System

**THE MARYLAND DEPARTMENT OF THE ENVIRONMENT**  
WATER SUPPLY INFORMATION & PERMITTING SYSTEM

Home | Search

Table | Map

148 Record(s) Selected | Export Results

Zoom To | Back to Detail Page

**KE2013G003(01)**

**Permittee:** Bereket Tikui  
**Permit Category:** Pending New Permit  
**Permit Type:** Large Agricultural Use  
**Permit Status:** Pending Response From Applicant

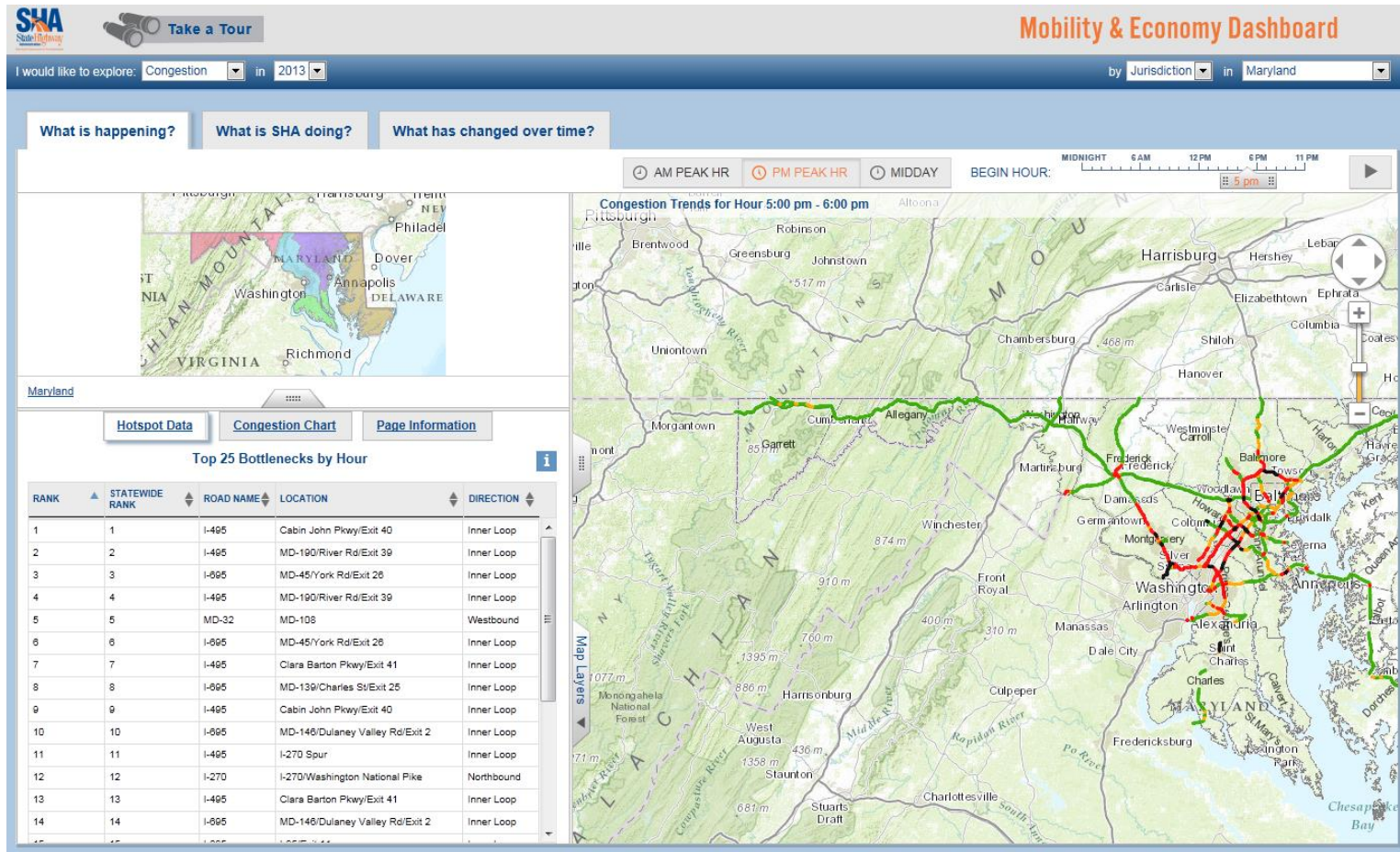
[Details](#)

Permit No.	Permittee	Status	Project Manager	Supervisor	Show in Map	Details
AL20050102(01)		Pending Initial Ana			Show in Map	Details
KE20120010(01)	Madonald Properties, LLC	Pending Initial Ana Gebremedhin			Show in Map	Details
KE20110001(01)	Herman Hill, Jr.	Pending Initial Ana Gebremedhin			Show in Map	Details
KE20120001(01)	Michael D. Foster	Pending Initial Ana Gebremedhin			Show in Map	Details
KE20120004(01)	Owings And Sons Business Trust	Pending Initial Ana Gebremedhin			Show in Map	Details
KE20110008(01)	John A. Francis Quinn	Pending Initial Ana Gebremedhin			Show in Map	Details
KE20110002(01)	Herman Hill, Jr.	Pending Initial Ana Gebremedhin			Show in Map	Details
KE20120005(01)	Olan N. & Marie B. Simpkins	Pending Initial Ana Gebremedhin			Show in Map	Details
KE20120009(01)	William David Langer	Pending Initial Ana Gebremedhin			Show in Map	Details
KE20120008(01)	Harvey S. Chase	Pending Initial Ana Gebremedhin			Show in Map	Details
KE20120001(01)	Owings And Sons Business Trust	Pending Initial Ana Gebremedhin			Show in Map	Details
KE20110006(01)	Eric Zeset	Pending Initial Ana Gebremedhin			Show in Map	Details
KE20120007(01)	Kent Family Farm, LLC	Pending Initial Ana Gebremedhin			Show in Map	Details

1800 Washington Boulevard, Baltimore, MD 21230 | (410) 537-3714

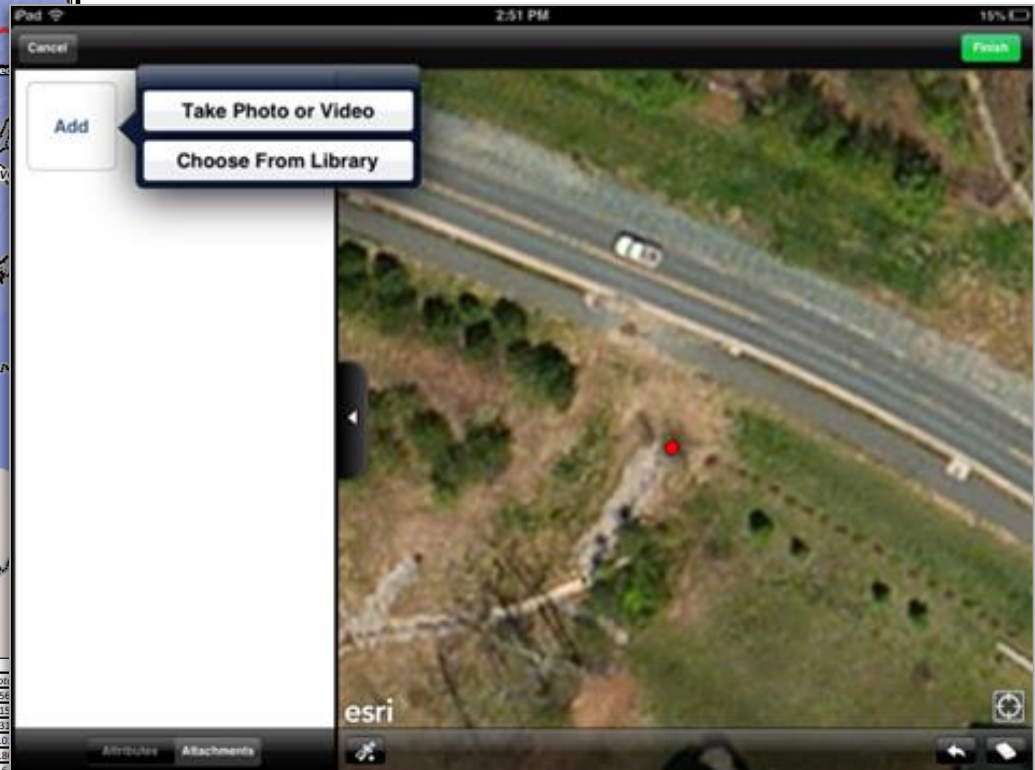
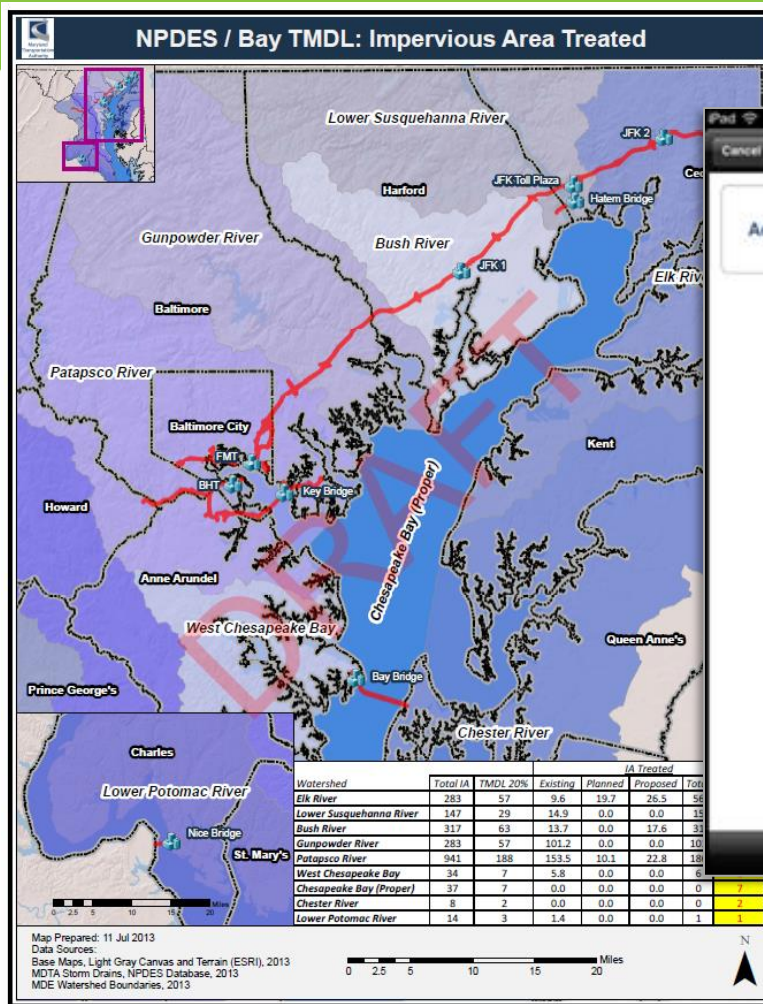


# Mobility and Economy Dashboard

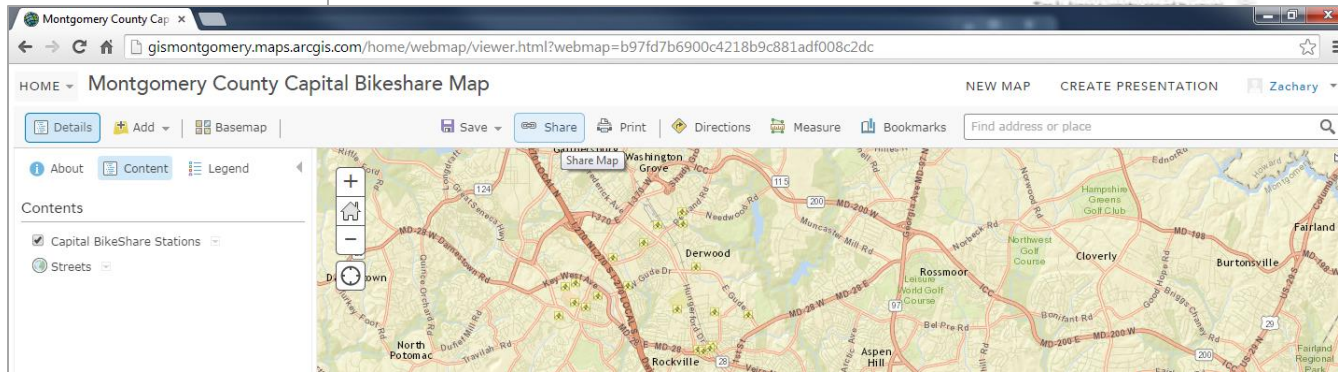
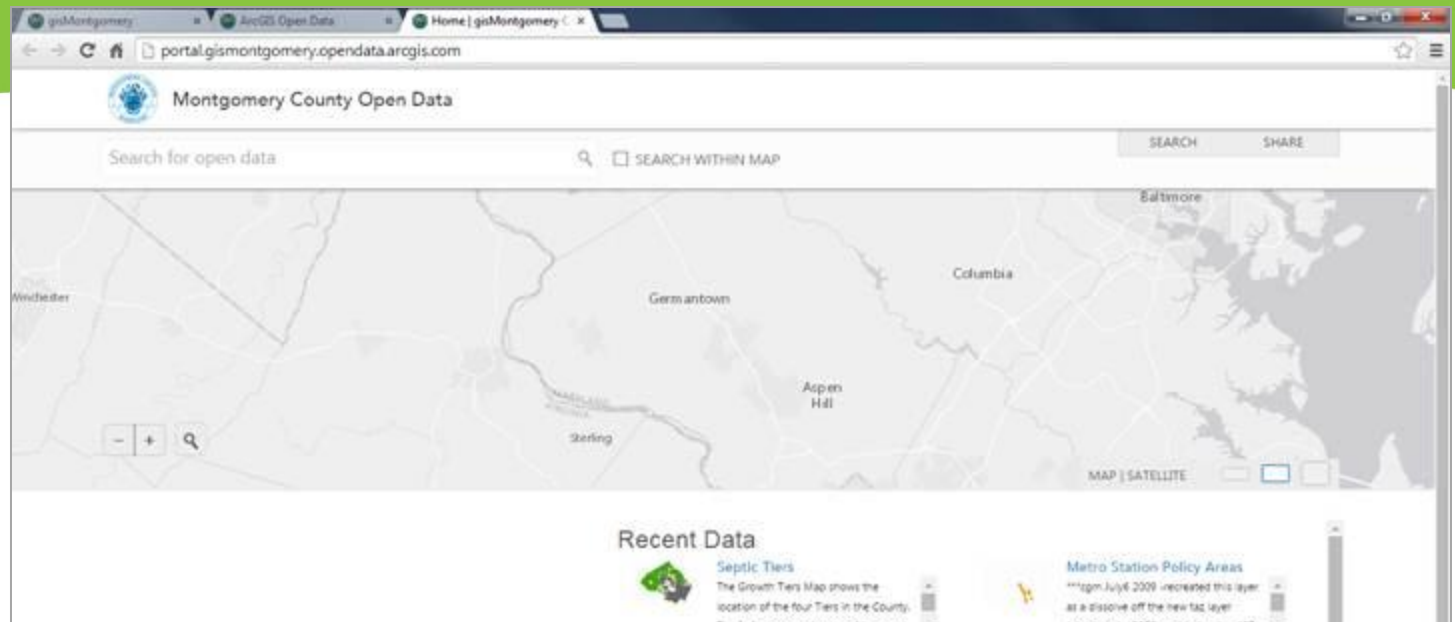




# Comprehensive Environmental Design



# Public-Facing GIS Portal





# JMT Outreach

- Maryland Traffic Records Forum
- Baltimore City YouthWorks
- Baltimore County Public Schools Career Days
- MDOT Fellows at MAA



Dear,  
Ms. Ruthloff

Thank you for your time and your fantastic presentation. I had gotten to learn and have loads of fun. I had learned that the field of Geographical Info Systems is what made Google earth and Maps by using satalites to see how the earth is changing and for military purposes. I enjoyed using the Ipad to figure out the capacity of the baseball stadium.

Thank You,



# Join Our Team

- **Senior GIS Analyst**
  - Dundalk, MD
  - Baltimore, MD
- **Systems Analyst - OnBase**
  - Baltimore, MD
- **GIS Applications Developer**
  - Laurel, MD
- **Project Manager – Applications Development**
  - Sparks, MD
  - Linthicum Heights, MD
- **Regional Director**
  - Washington, DC

Apply at:  
**[bit.ly/1vWDiup](https://bit.ly/1vWDiup)**

# Connect with us...



**Web | [www.jmttg.com](http://www.jmttg.com)**



**Twitter | @JMTTG**



**LinkedIn | JMT Technology Group**



**Phone | (410) 316-2280**



**Email | [info@jmttg.com](mailto:info@jmttg.com)**