



October 22, 2014

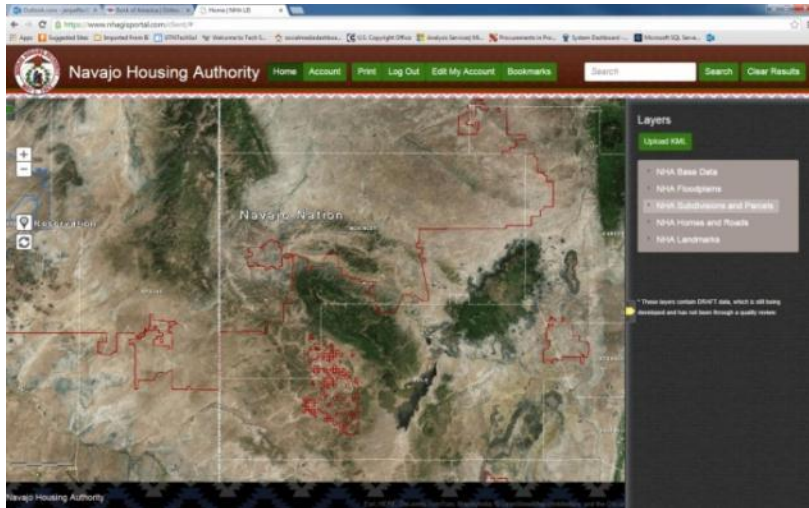
John Knowlton

Corporate Overview

- ❖ AECOM is a premier, fully integrated infrastructure and support services firm
- ❖ Supports a broad range of markets, including transportation, facilities, environmental, energy, water, and government
- ❖ The recent incorporation of URS furthers AECOM's standing as a leader in all of the key markets that it serves
- ❖ Nearly 100,000 employees — including architects, engineers, designers, planners, scientists and management and construction services professionals
- ❖ Serves clients in more than 150 countries around the world
- ❖ AECOM provides a blend of global reach, local knowledge, innovation and technical excellence in delivering solutions that create, enhance and sustain the world's built, natural and social environments
- ❖ AECOM has annual revenue of approximately US\$20 billion

Germantown Technology Solutions Group

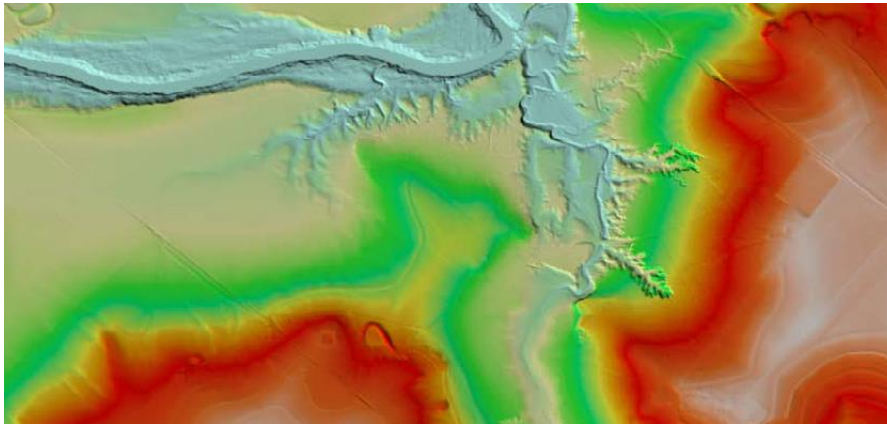
Primary Focal Areas



Solution Development



Information Resiliency



Geospatial Data

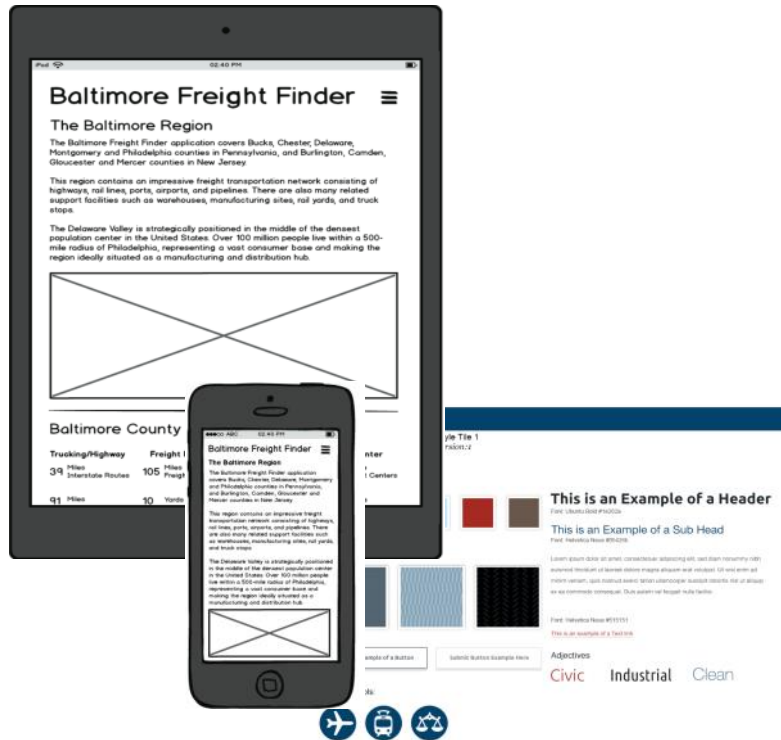


Systems and Enterprise Software

Selected Existing Clients



Solution Development



Responsive Design



Native

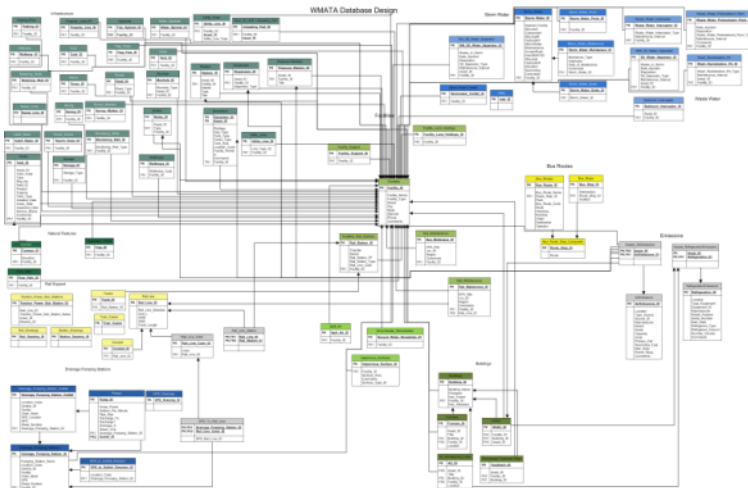
Geospatial Data



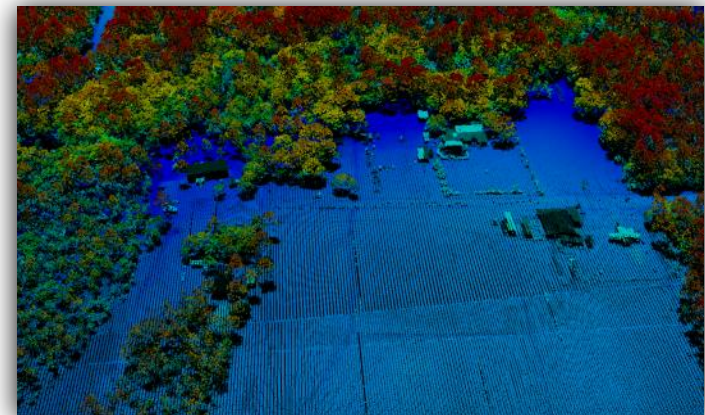
Orthoimagery



Social Media



Enterprise GIS



LiDAR

Information Resiliency

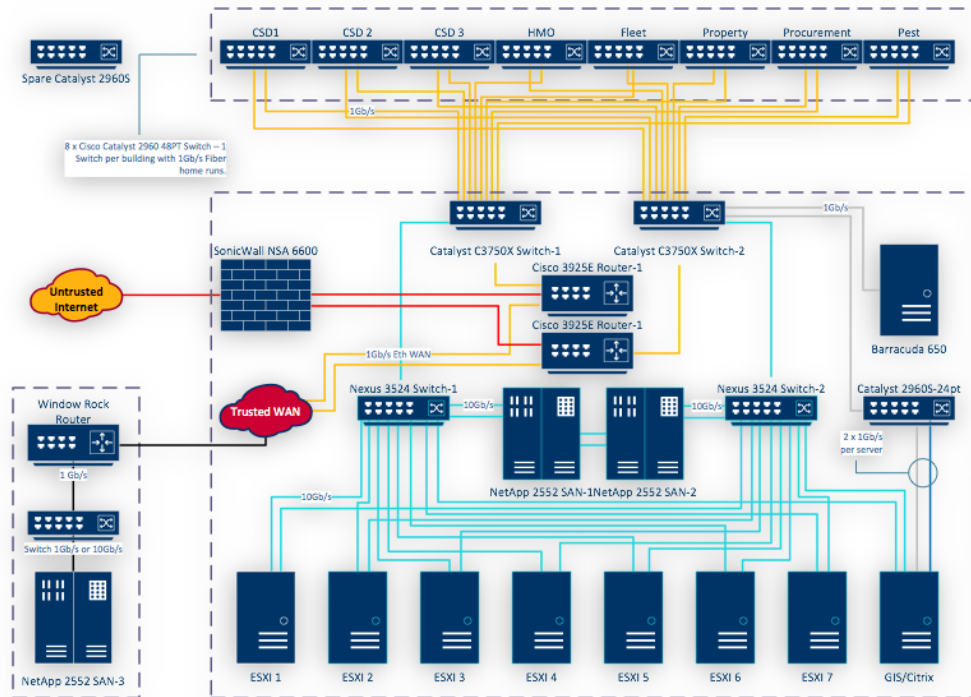


Cyber Disruption Planning & Preparedness



Cyber Disruption Exercises

Systems and Enterprise Software



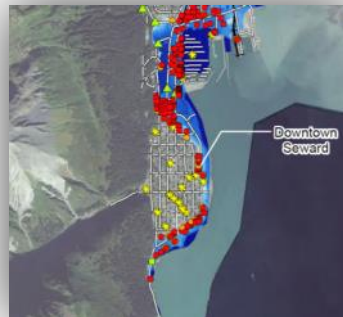
Additional Niche Capabilities



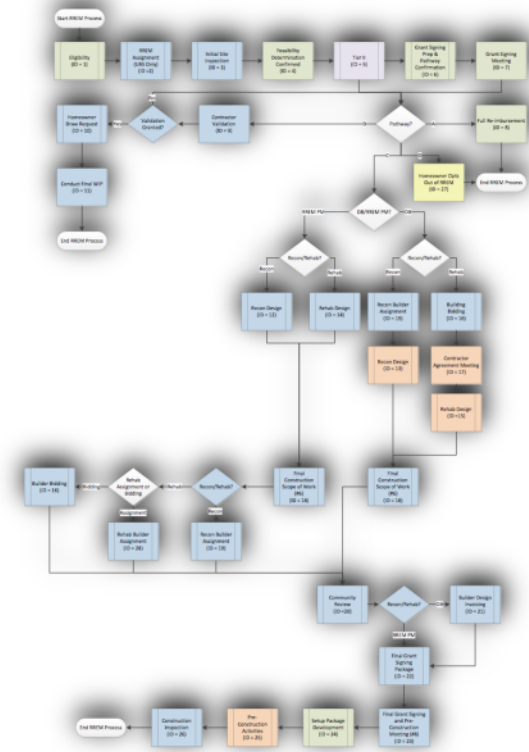
Dashboards



508 Compliance



Numerical Modeling



Business Process Documentation