

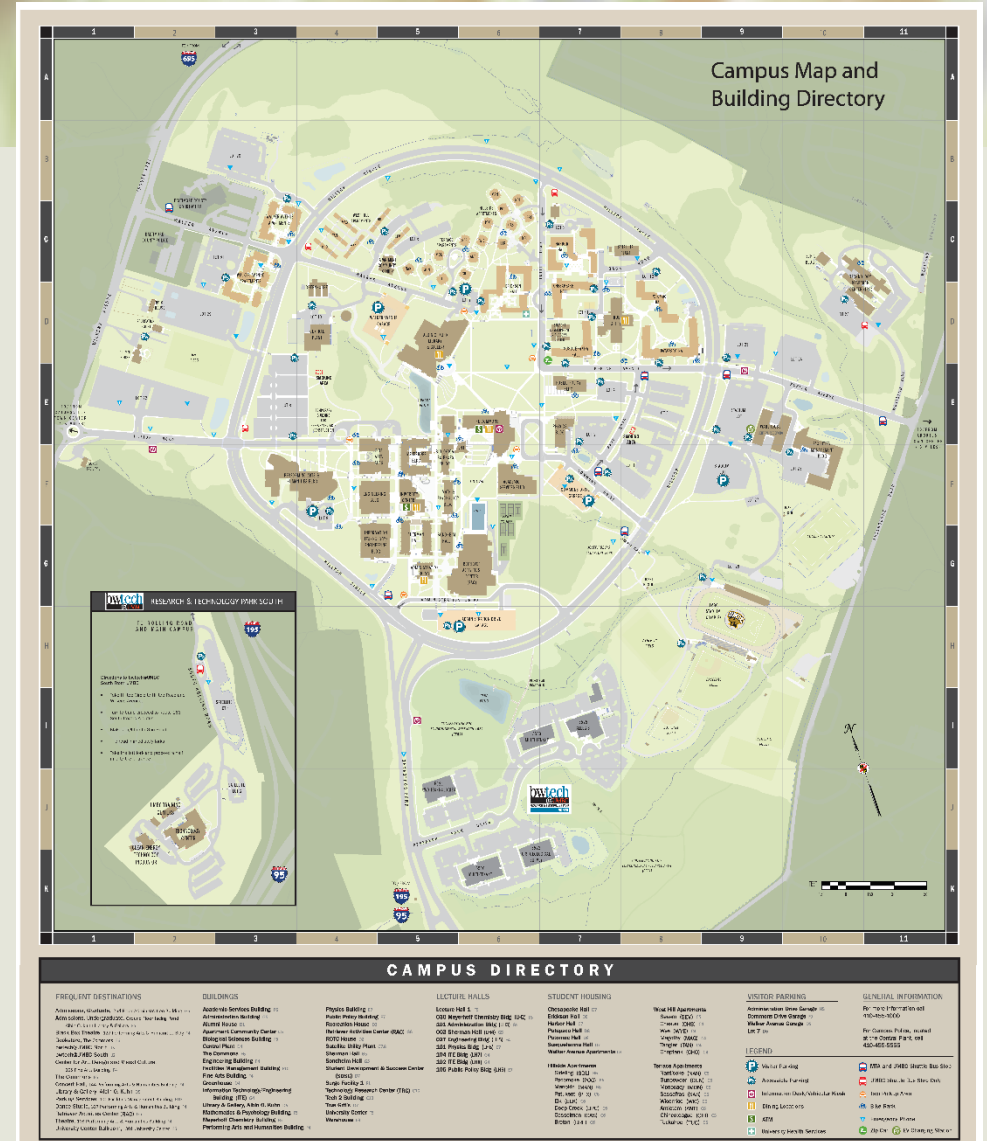
A stylized, low-resolution map of a campus or urban area, featuring various colored polygons representing buildings, roads, and green spaces. The colors include shades of brown, green, grey, and blue. The map is oriented diagonally.

GIS Web Applications for UMBC

Andrew Blowers, Michael Glassman, and Nathaniel Tabeling
January 21, 2015

Current Status of Campus Geospatial Data

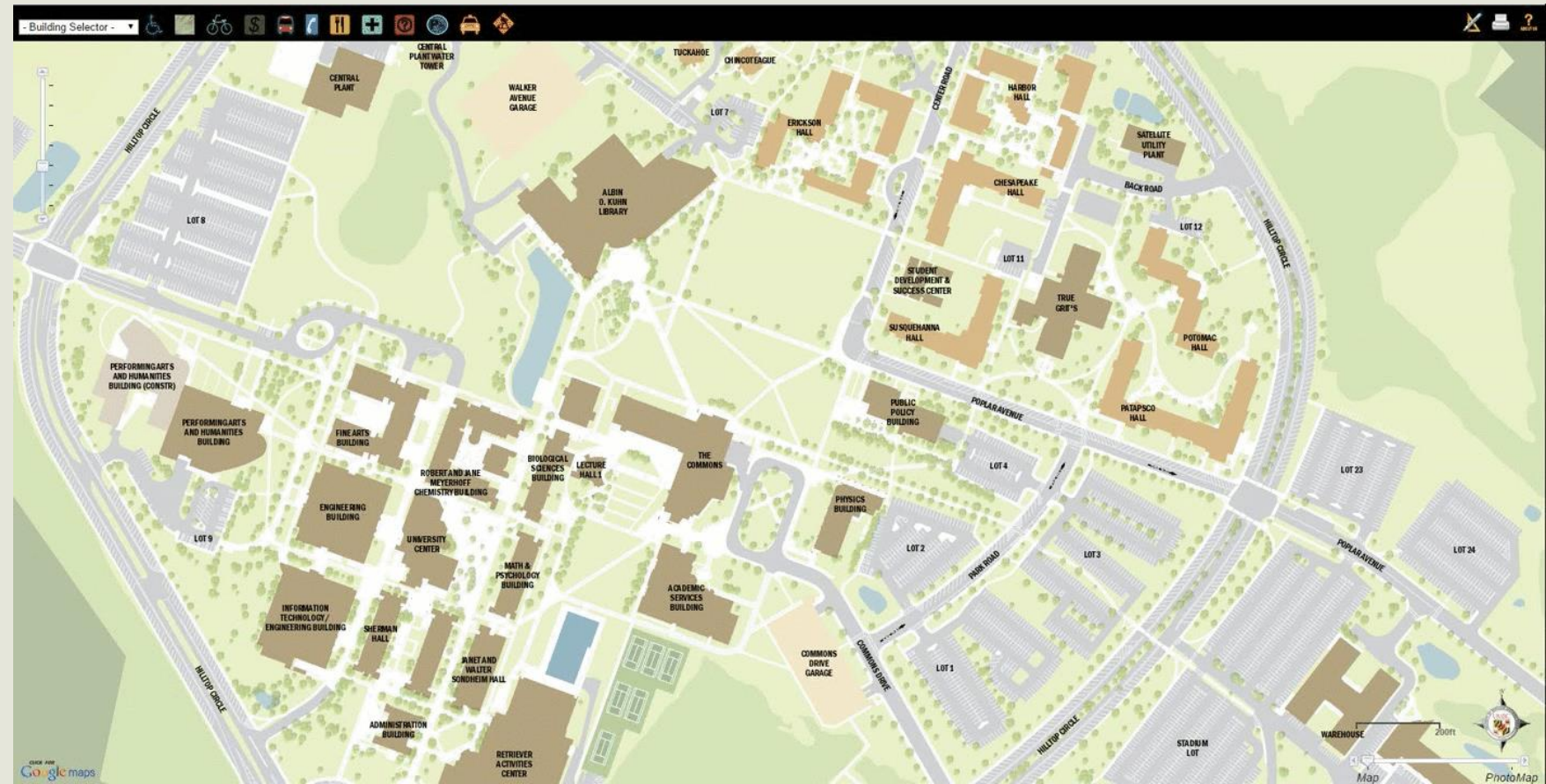
- Campus maps provided as static images
- Large, accurate dataset of university assets



Basemap Web Application

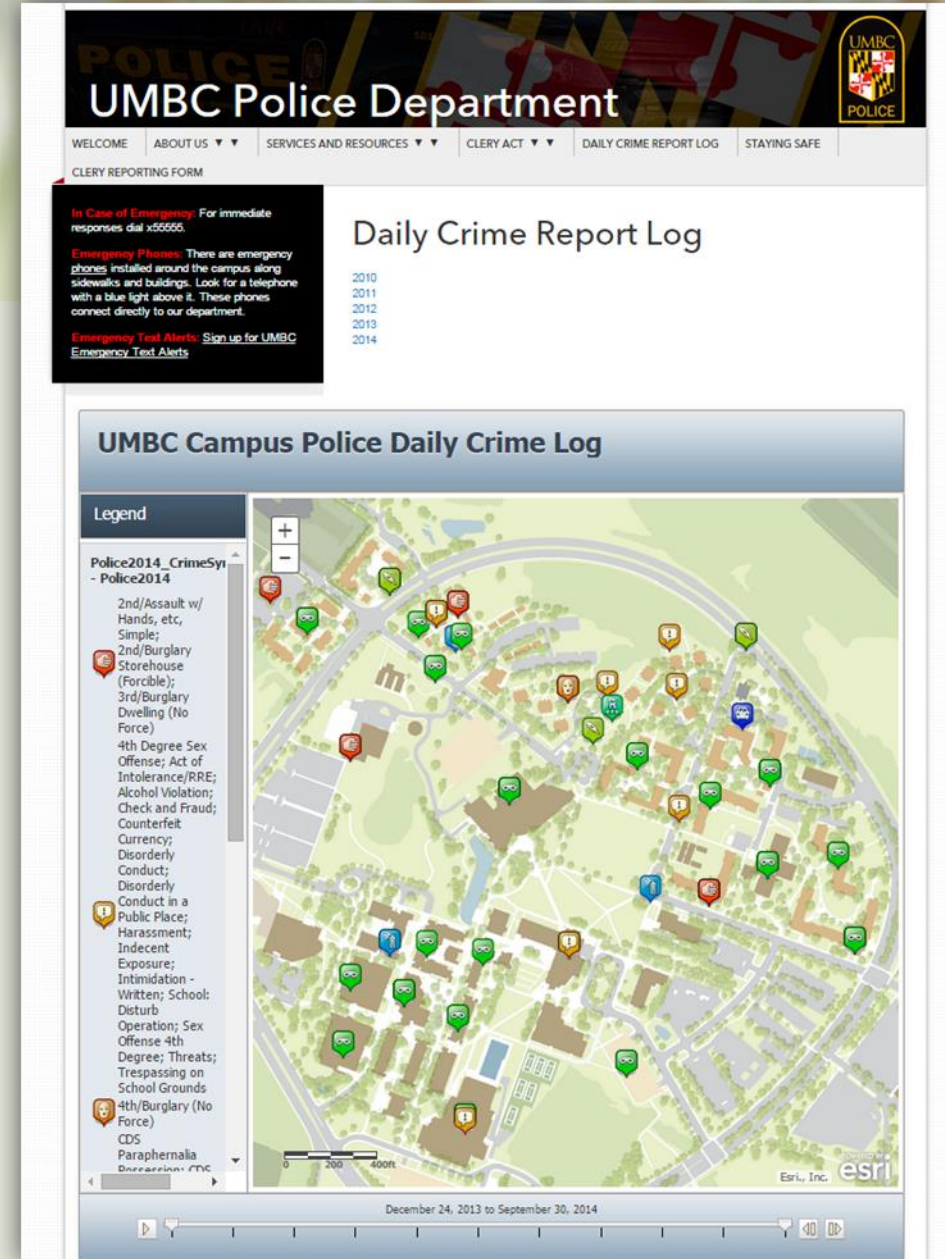
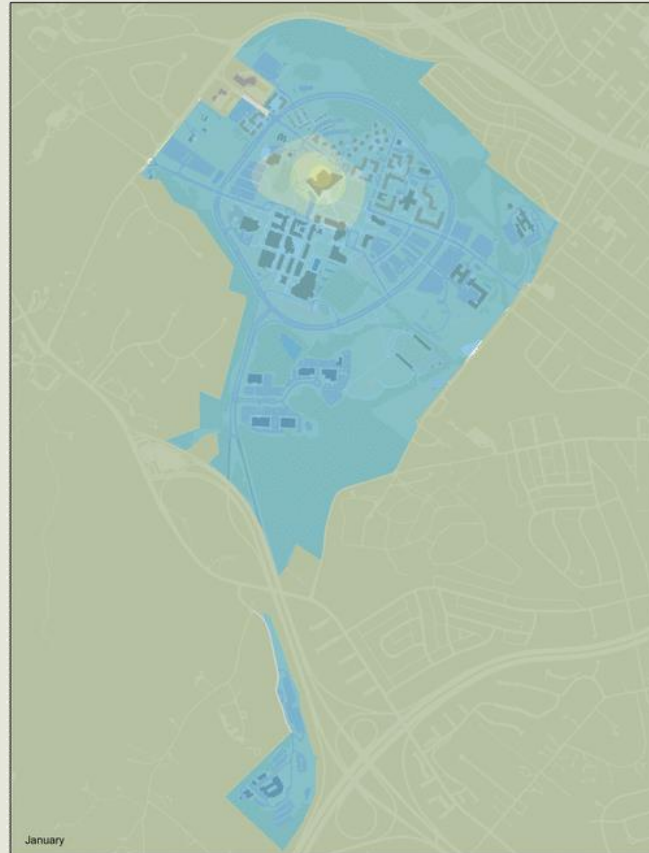
- Provides spatial data to students, staff, and visitors

- Building Information
- Accessible Routes
- Live Transit Tracking
- Locations of:
 - ATMs
 - Food Services
 - Parking
 - Bus Stops
 - Information Kiosks
- Satellite Imagery



Campus Police Data

Analysis and display of campus incident data



Space Management

- UMBC has CAD floorplans for every building
- Using ArcMap to manage spaces
- Currently testing CityEngine as an alternative



Interior Imagery

- 360 degree images of interior spaces
- Ability to “tag” items
 - Fume hoods
 - Chemical cabinets
 - Fire sprinklers
 - Life-safety equipment
- Useful for first responders
- To be used with Space Management spatial data





Questions or Comments?

UMBC GIS Group: umbcgis@umbc.edu

Andrew Blowers: ablowers@umbc.edu

Michael Glassman: zx52530@umbc.edu