

AXIS GeoSPATIAL, LLC



MSGIC 2015 Fall Quarterly Meeting
Allan Blades, GISP



AXIS GeoSpatial LLC Overview

- **Headquartered in Easton, MD**
- **Small Business Enterprise**
- **Geospatial Data Capture Company**
 - C2G (Cloud to Ground)
 - LiDAR, Photogrammetry, Surveying, CAD & GIS
- **Federal, State & Local Governments**
- **A&E Firms, Utilities, Transportation, Universities**



AXIS - CO



AXIS - NJ

AXIS HQ - MD



AXIS GeoSpatial LLC Overview

- **Founded in 2001**
- **Owners – Justin Lahman & David Rorrer**
- **Licensed and Certified Photogrammetrists and GIS Professionals**
- **Lahman – 26 years experience Photogrammetric Surveying**
- **Rorrer – 29 years experience Photogrammetric Surveying**
- **PLS – William (Bill) Derry (MD, DE, NC, PA)**
- **Full Service Photogrammetric Base Mapping for CADD & GIS**
- **GIS Consulting, Data Production and Application Services**



AXIS GeoSpatial LLC Overview

- **Design-Scale Mapping from 1" = 10' and smaller**
 - ❖ Transportation
 - ❖ Utility
 - ❖ Site Design
 - ❖ Landfills
 - ❖ Plants / Refineries
 - ❖ Municipalities
- **Multi-band Digital OrthoImagery from .1' Pixel GSD**
 - ❖ Maryland Statewide 6" Imagery – 07, 08, 11 & 13
 - ❖ North Carolina Statewide 6" Imagery – 12, 13 & 14
 - ❖ New York Statewide
 - ❖ 2014 - 12", 6" & 6" NYC True Ortho
 - ❖ 2015 - 6" & 12" Imagery
- **GIS Mapping for 15 MD Counties since 2003**
 - ❖ Multiple Contracts – Multiple Re-Hire's



Customer Base

- **Engineering**

- Land Development
- Facility Mapping



- **Municipal**

- Towns
- Counties
- Regional Commissions/Agencies



- **State**

- Statewide Orthoimagery Programs
- DOTs



- **Federal**

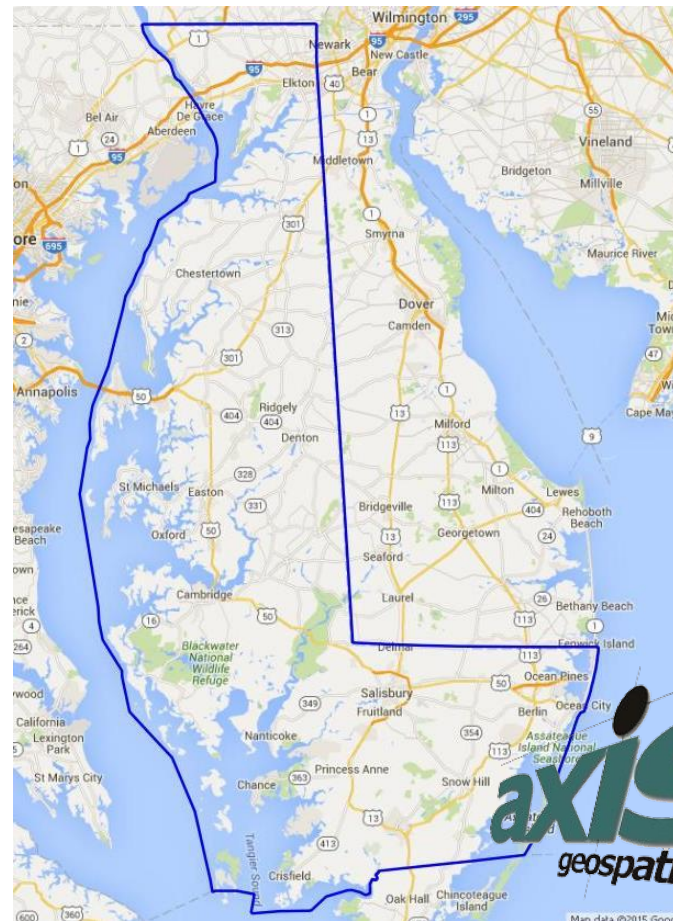
- USACE
- DoD



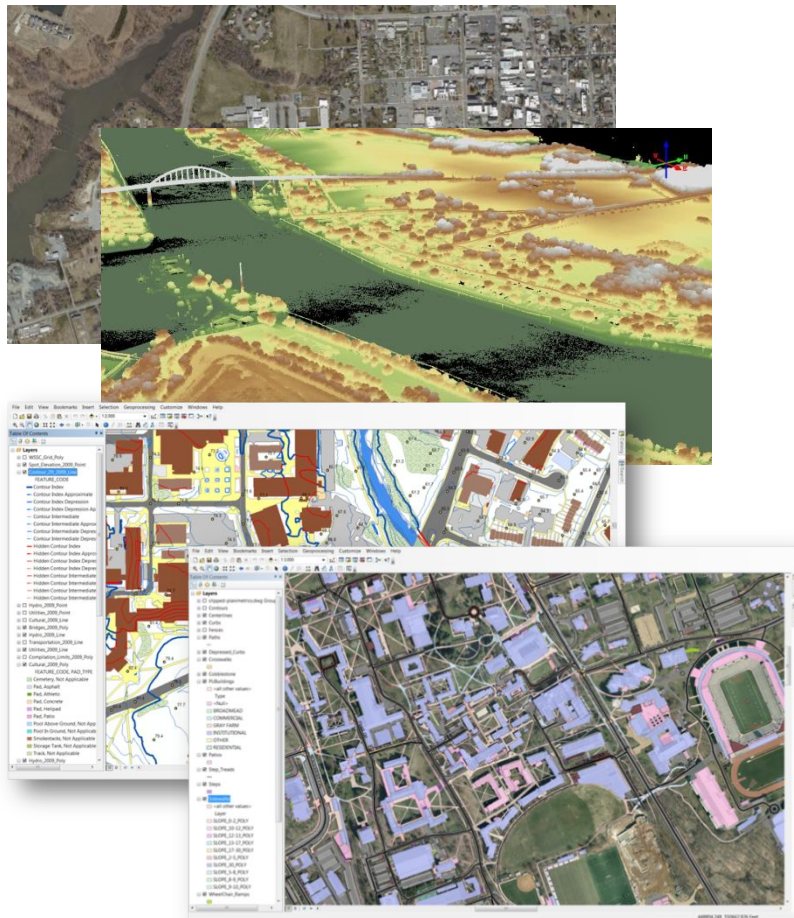
- **Partner Companies**

2016 Spring Eastern Shore Imagery

- **Currently in Planning Stage**
- **December 3, 2015 Kickoff**
- **6" GSD 4-Band Imagery**
- **Buy-Up Opportunity's**
 - **3" Imagery Upgrades**
 - **True or Near True Ortho**
 - **Oblique Imagery - Pictometry**
 - **LiDAR**
- **Mapping Updates**
 - **Planimetric Mapping**
 - **Impervious Surface Mapping**
 - **Landuse / Landcover Mapping**



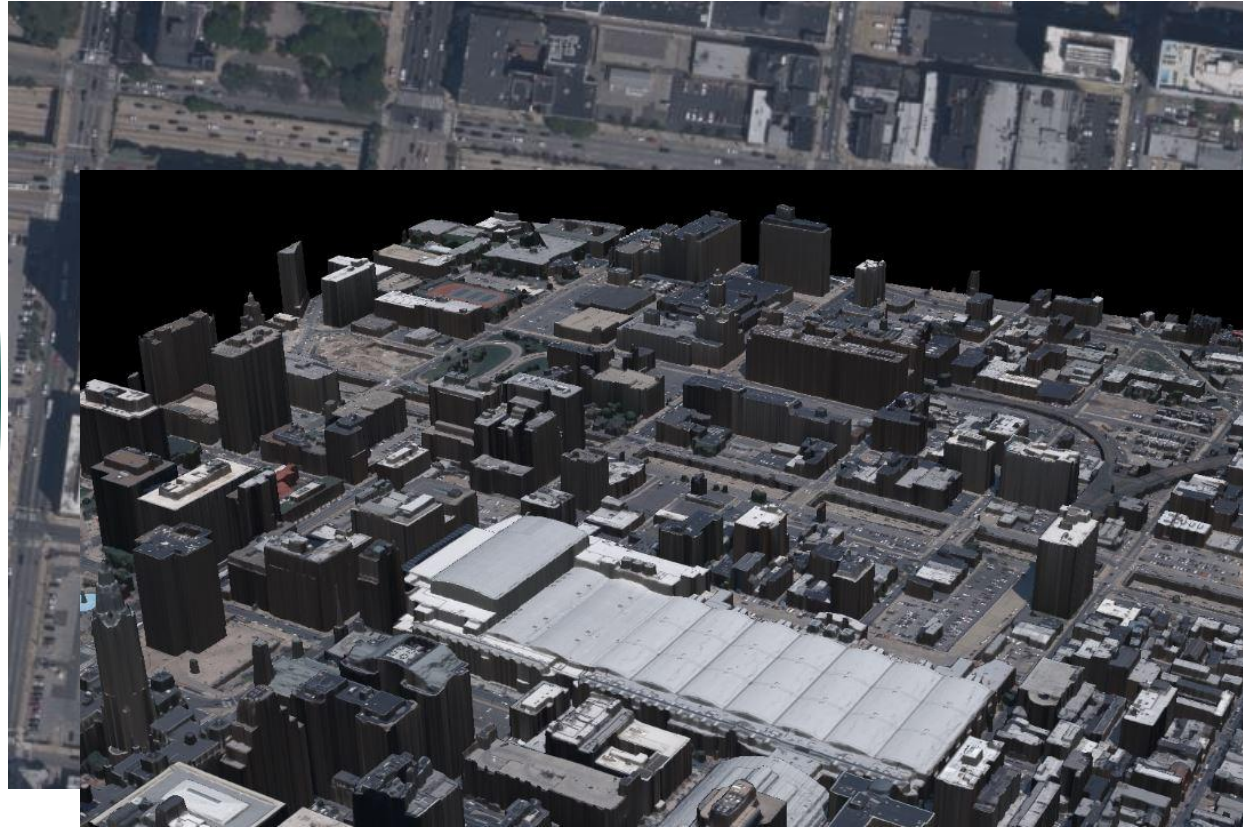
GeoSpatial Data Services



- Imagery
- LiDAR
- Survey
- Planimetric GIS/CADD Mapping
 - Engineering / Design
 - Impervious Surface
 - Landuse / Landcover
- Application Development
- Data Hosting



Imagery



True Orthophoto

Colorized Digital Surface Model



LiDAR - Emerging

- **HD-LiDAR (High Definition, High Density, High Accuracy)**
- **Point Cloud Densities from 2ppsm to 35 ppsm**
- **Vertical Accuracies Averaging .05'!**
 - From Altitudes of 1,200' to 2,500' AMT
 - From Fixed-Wing Aircraft (No Helicopter Required)
- **Entire Landscape Captured, Surveyed, Measured, Mapped**
- **Significantly Reduced Schedules & Response Time**
- **Reduced Ground-based Survey Requirements/Needs**
- **Achieves Detail Logistically Unobtainable Through Any Other Survey, Technological Means**



Applications & Uses

- **Rapid & Highly Accurate Volumetric Calculations**
- **3-D Change Detection**
- **3-D Structural Mapping**
 - Rooftops and Facades
 - Catenary Information on overhead wires/lines
 - Vegetation & tree canopy definition
 - Bridges, overpasses, overhead signs, etc.
 - Fences, walls, headwalls, bulkheads, piers, etc.



Applications & Uses

- **Impervious Surface Mapping**
- **Terrain Mapping**
- **Cross-Section, Plan & Profile Data**
- **Planimetric Feature Mapping (10 scale & smaller)**
- **Topography**
- **Any Application Requiring High-Accuracy & Detailed Basemapping CADD, GIS or Survey Data**



Applications & Uses

Anytime of Year...

Regardless of foliage or season...

**AXIS' HD-LiDAR is removing the Seasonality from Aerial
Surveying & Mapping!**



WE'RE GROWING

Join our Team!

- Project Managers
- Quality Assurance Manager
- Digital Orthophoto Production Lead
- GIS Department Lead
- LiDAR Manager/Analyst
- LiDAR Technician
- Photogrammetric Technical Lead
- Digital Orthophoto Production Lead



Connect and Follow AXIS



Website | www.axisgeospatial.com



Facebook | Axis-GeoSpatial-LLC



Twitter | @axisgeospatial



LinkedIn | AXIS GeoSpatial LLC



Google+ | +Axisgeospatial



You Tube | AXIS GeoSpatial LLC



Phone | (410) 822-1441

Allan Blades Contact Information

Email: ablades@axisgeospatial.com

Direct: 410-829-8066

