



**MSGIC ANNUAL MEETING**  
**OCTOBER 21, 2015**  
**TALBOT COUNTY PUBLIC LIBRARY**

# Spatial Systems Associates, Inc.

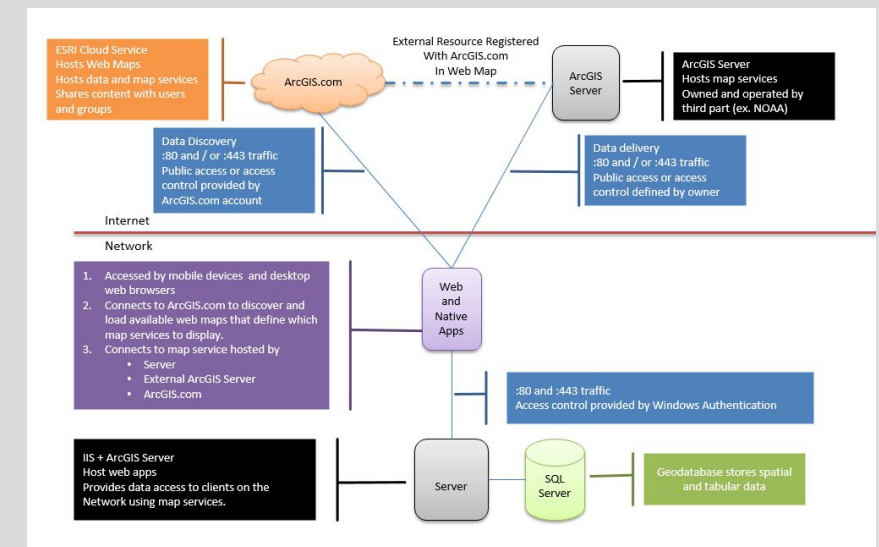
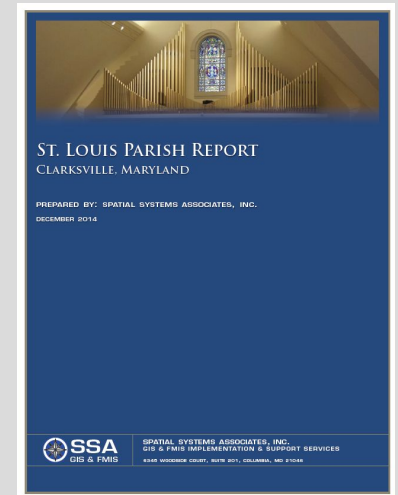
- Founded in 1995
- Located in Columbia, MD
- GIS is our only business
- MSGIC Sponsor
- Esri business partner since founding
- GISPs, Civil Engineers, Database Administrators, Application Developers, Analysts
- 20 years providing Enterprise GIS, Software Development, and System Integration Services

# Services

- Consulting
  - GIS Architecture Development
  - Data Development and Analysis
  - Field Collection
  - Application Development

# Consulting

- Business process analysis
- Needs assessment (large and small scale)
- Business information recommendations
- ROI studies
- Reviewing integration patterns to improve or streamline data flows
- Re-architecting and integration
- Understanding the perspective of the end-user or non GIS professional
- Training and as-needed support

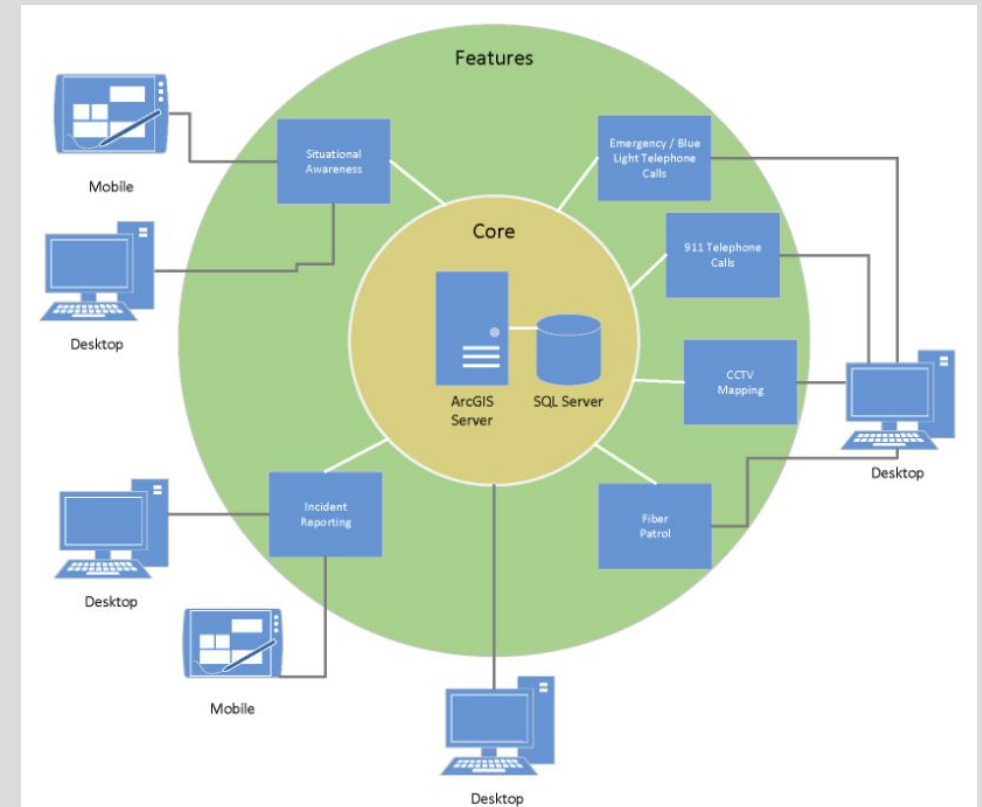


# Services

- Consulting
- **GIS Architecture Development**
- Data Development and Analysis
- Field Collection
- Application Development

# GIS Architecture Development & Support

- Architecture and Platform Design
- Database/Geodatabase Design
- Business Requirement Integration and Customization
- Stakeholder/User Access Requirements
- Access Points (Desktop, Mobile)
- Roles and Authentication
- Entire Esri Platform
  - ArcGIS for Desktop & ArcGIS Pro
  - ArcGIS for Server
  - ArcGIS Online & Portal for ArcGIS
  - ArcGIS for Window Mobile & ArcPad



# Services

- Consulting
- GIS Architecture Development
- Data Development and Analysis
- Field Collection
- Application Development

# Data Development and Analysis


- Development and Maintenance
  - Full service data creation, QA/QC, and analysis services
  - GIS data development, CAD data development
- Data Conversion
  - Esri Local Government Information Model – early adopters in 2010
  - Use of LGIM templates and models
  - Publishing of LGIM models as geoprocessing services
- Metadata Creation
  - ISO, SDSFIE, FGDC Metadata and (AEC) CADD based standards

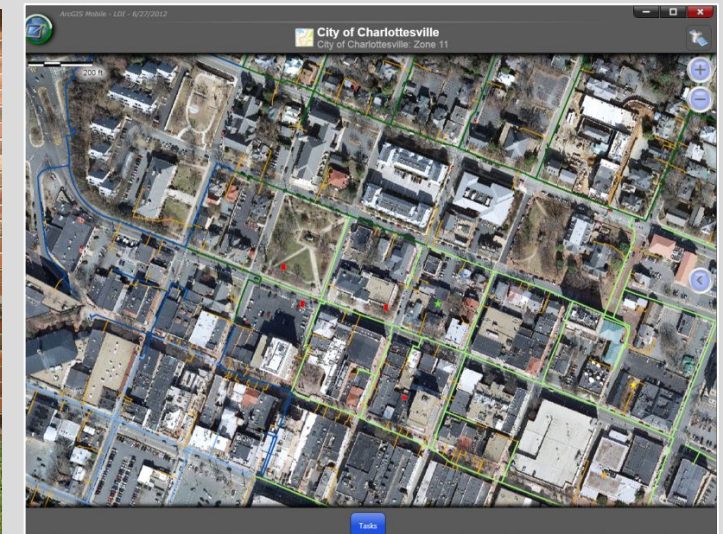
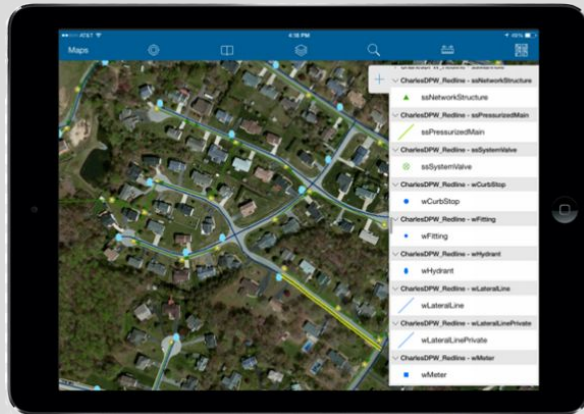


# Services

- Consulting
- GIS Architecture Development
- Data Development and Analysis
- **Field Collection**
- Application Development

# Field Collection

- Gas Leak Detection
- NPDES Permit Inspection
- Building Interior Spaces
- Hazardous Materials  
(Asbestos Abatement)
- Address Verification 



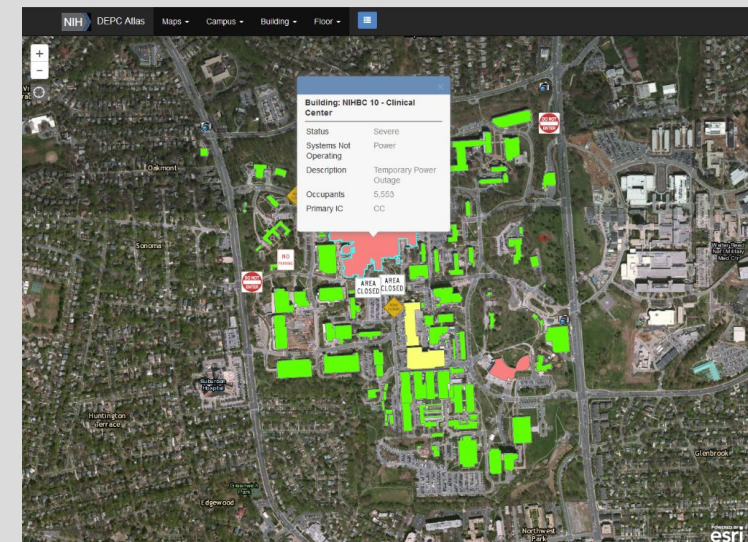
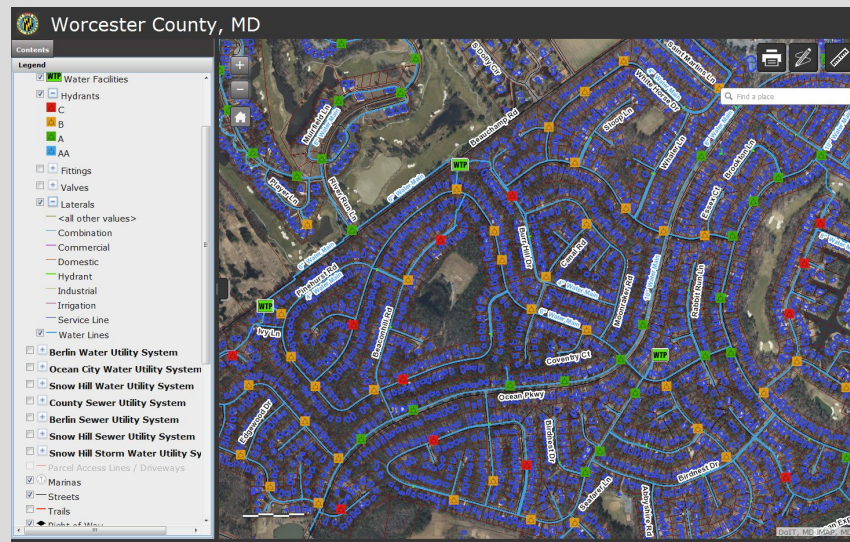
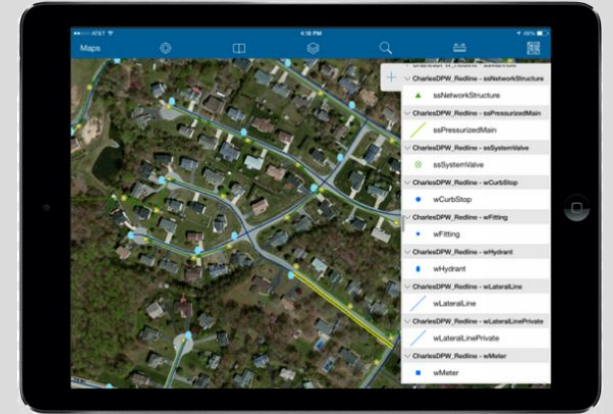
# Services

- Consulting
- Data Development
- Field Collection
- Application Development



# Application Development

- Desktop and Web Development
- Developing geospatial web applications since 1999
- .NET
- HTML5, JavaScript
- Dojo, jQuery, Bootstrap, D3
- Fully customized extensions to Online apps



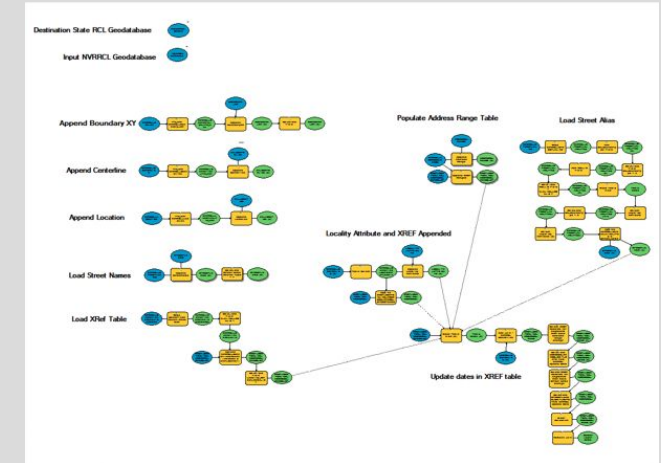
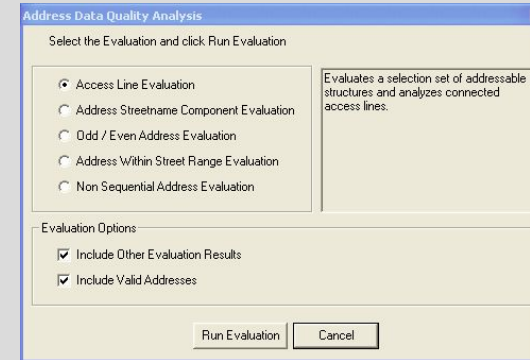
# Maryland Clients

- State of Maryland
- Allegany County
- Anne Arundel County
- Baltimore City
- Carroll County
- Charles County
- Dorchester County
- Frederick County
- Garrett County
- Howard County
- Somerset County
- St. Mary's County
- Washington County
- Wicomico County
- Worcester County
- Town of La Plata
- City of Salisbury
- City of Laurel
- National Institutes of Health
- FEMA

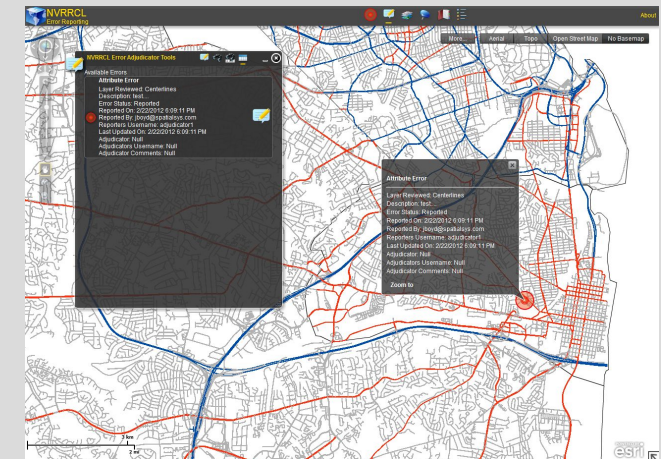
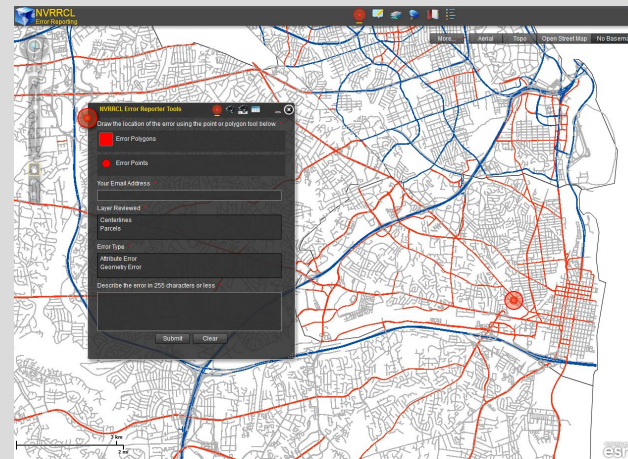


# Emergency Services

- Next Generation 911 Data Preparation and Maintenance
- Multi modal modeling and Regional Routable Centerline
- Data Preparation
  - Emergency Service Boundaries
  - Site Data
  - Street Centerlines
  - Provide quantitative measure data quality
  - Evaluations can be performed on individual streets, subdivisions, or the entire region.
  - Identify potential violations of addressing system rules



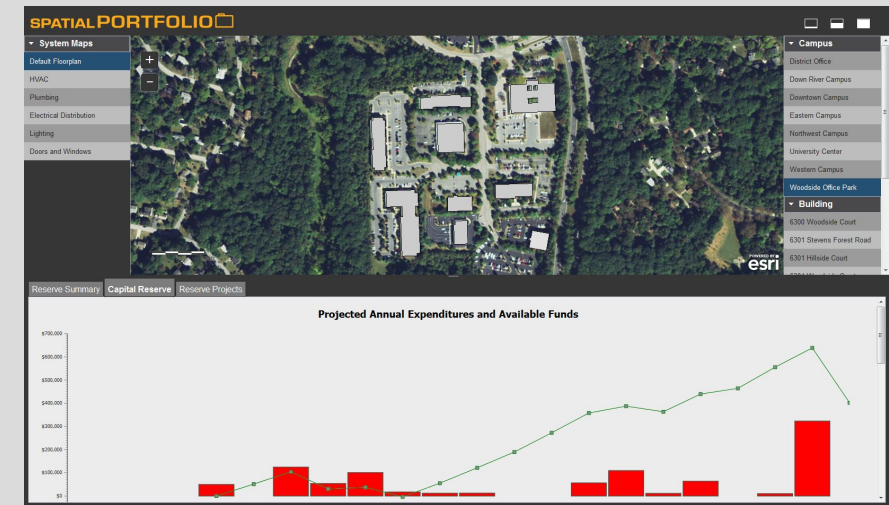
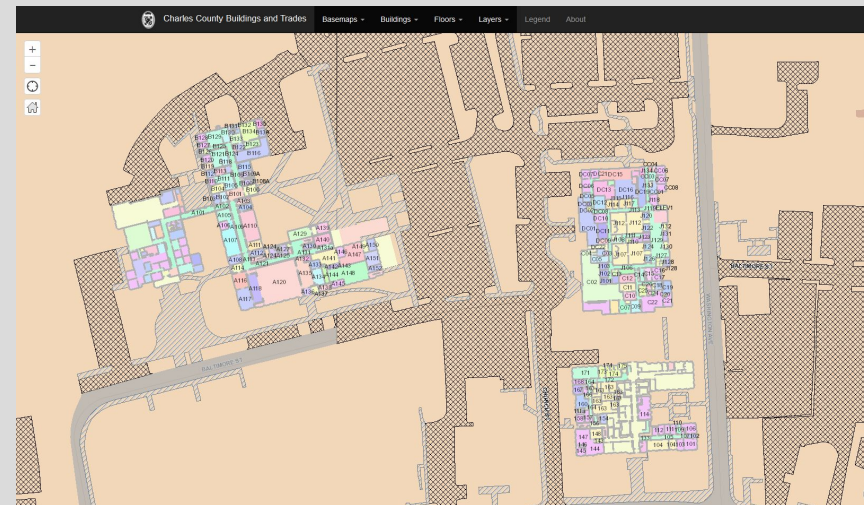
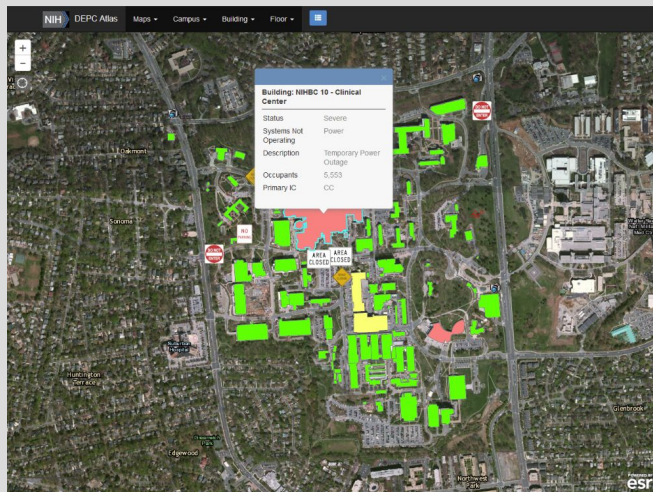
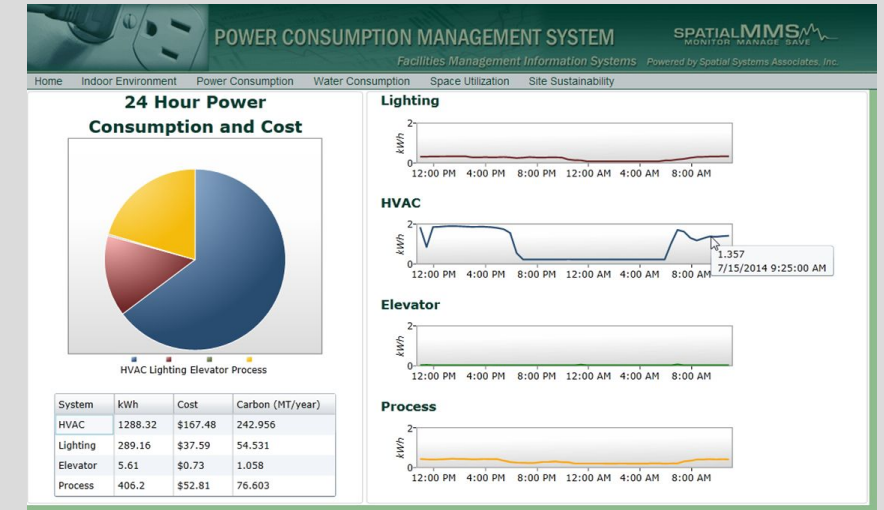
- Data Management and Synchronization
  - Topology Issues (Cross Jurisdictional)
    - Gaps
    - Overlaps
  - Automated Models for Synchronization
  - Communication Portal Across Jurisdictions





# Facilities Management

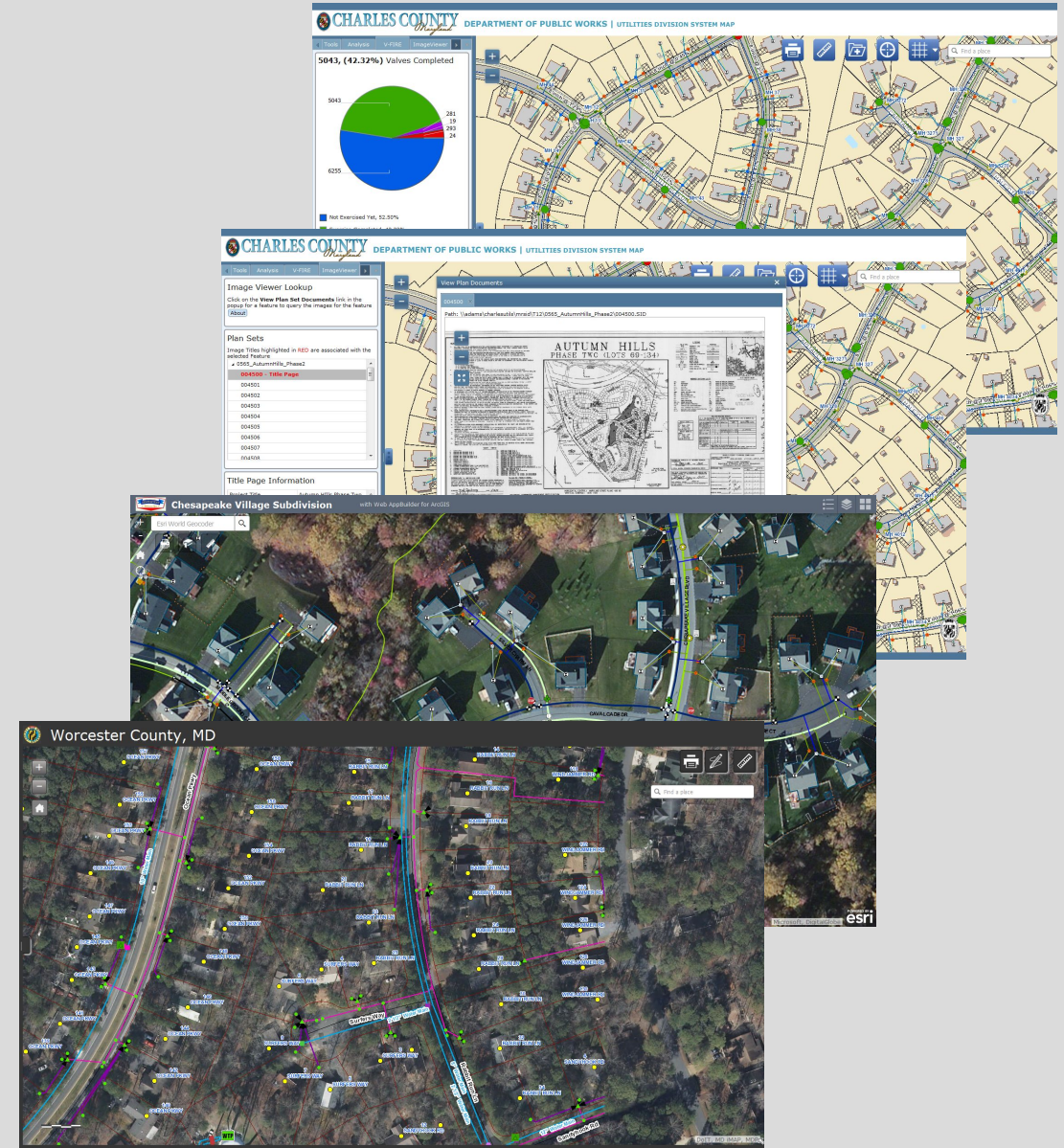
- Energy and Sustainability
- Water Consumption
- Capital Assets
- Project Management
- Safety and Security
- Space Management





# Public Works

- Data Development and As-built Access
- Water Billing Analysis
- Network Analysis
- Valve Isolation
- Asset Management Integration
- Project Status and Administrative Communication





Patrick McLoughlin, GISP

[pmcloughlin@spatialsys.com](mailto:pmcloughlin@spatialsys.com)

410.423.1870

[www.spatialsys.com](http://www.spatialsys.com)

@SpatialSystems