



# Maryland State Geographic Information Committee

*A commitment to excellence in the development and coordination of geographic information technologies.*

## State Updates

Matt Sokol



## GIS Software Master Contract

- Effective 8/1/16
- Five Year Contract with Two 2 Year Options
- Five Vendors across Three Functional Areas

### Vendors

- 1Spatial
- Esri
- GeoComm
- Hexagon Geospatial
- Pitney Bowes

### Functional Areas

- FA I: Desktop/Server Software
- FA II: Mobile Software
- FA III: Manufacturer's Software  
Maintenance and Support



## GIS Software Master Contract

- For use by both State and Local Government
  - State Agencies work through DoIT
  - Contracting vehicle for Local Government
- Details on Products and Procurement now on available on the MD iMAP Portal:  
<http://imap.maryland.gov/Pages/gis-software-master-contract.aspx>
- Not a Services or Training Contract
- RFP can be found here: <http://bit.ly/29X8tgi>



# Maryland State Geographic Information Committee

A commitment to excellence in the development and coordination of geographic information technologies.

## GIS Vendor Day

Monday, October 24, 2016

9:00 AM – 12:00 PM

Maryland Department of Information Technology

100 Community Place

Crownsville, MD 21032

- All GIS Software Master Contractor will be in attendance
- Registration still open for State and Local Government GIS Managers, Coordinators, Analysts, Technicians
- Procurement Officers from DoIT will be available to answer any procurement related questions





## Statewide Imagery Program

### Eastern Shore Imagery Project 2016

- Axis/AECOM Team
- Started receiving final deliveries
  - Cecil
  - Howard
  - Kent
- 6 inch (Eastern Shore + Howard) + Buy-ups

### Western Shore Imagery Project 2017

- For [buy-ups](#) – contact Lisa Lowe (lisa.lowe@maryland.gov)



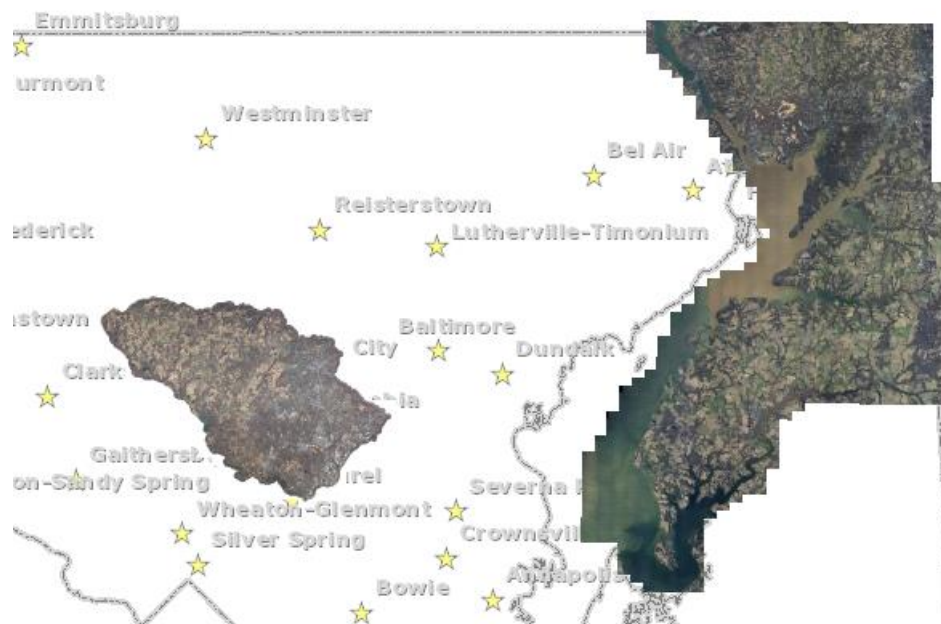


# Maryland State Geographic Information Committee

A commitment to excellence in the development and coordination of geographic information technologies.



Delivered



***Complete Delivery:  
Anticipated End of 2016***





## Statewide Training Program

- In-Person Courses
  - Thinking Spatially (formerly Intro to GIS, MD iMAP and ArcGIS Online)
  - Intro to ArcGIS Desktop and MD iMAP
  - Intermediate ArcGIS Online and MD iMAP
- [Online Course – Thinking Spatially](#)
- Since program began in June 2015:
  - 466 participants from 24 state agencies and 8 local jurisdictions
- Calendar of trainings and seats available on [MD iMAP Portal](#)
- Limited seats may be available for non-State employees
  - *Contact Lisa Lowe (DoIT) – [lisa.lowe@maryland.gov](mailto:lisa.lowe@maryland.gov) for info*



## MD iMAP LiDAR Services

- Statewide LiDAR Services are now being migrated to MD iMAP
- URL Change:
  - [lidar.salisbury.edu/arcgis/rest/services](http://lidar.salisbury.edu/arcgis/rest/services) to  
[lidar.geodata.md.gov/imap/rest/services](http://lidar.geodata.md.gov/imap/rest/services)
- Folder structure change
  - Now organized by individual County and Statewide
  - Same products
- Official announcement with detailed service URL changes coming soon
- Historic LiDAR services coming soon!





## MD iMAP LiDAR Downloads

- Pre-Defined DEMs
  - Via Dropbox
  - Include metadata, overview pyramids, and bare earth DEMs
  - Downloads by County
- Pre-Defined Point Cloud
  - LAS files by county coming soon
- Focused Areas
  - Via LiDAR Download Tool - ***Coming Soon!***

**LiDAR** – <http://imap.maryland.gov/Pages/lidar-download.aspx>



# Maryland State Geographic Information Committee

A commitment to excellence in the development and coordination of geographic information technologies.

## MD iMAP New & Updated Services

- Housing Designated Areas \*UPDATED\*
- Local Economic Development \*NEW\*
- Incentive Zones \*UPDATED\*
- EMS \*NEW\*
- Long Term Care Assisted Living \*UPDATED\*
- Alternative Fuel \*UPDATED\*
- Toll Plazas \*UPDATED\*
- Floodplains \*UPDATED\*
- Local Transit \*NEW\*





# Maryland State Geographic Information Committee

Commitment to excellence in the development and coordination of geographic information technologies.

## MD iMAP – New Applications

<http://imap.maryland.gov/Pages/map-gallery.aspx>

- Emergency Management
  - [State Government Closings](#) (DBM)
- Transportation
  - [Road Closure Reporter](#) (MDOT)
- Environment
  - [Clean Marinas](#) (DNR)
  - [319\(h\) Program Projects](#) (MDE)





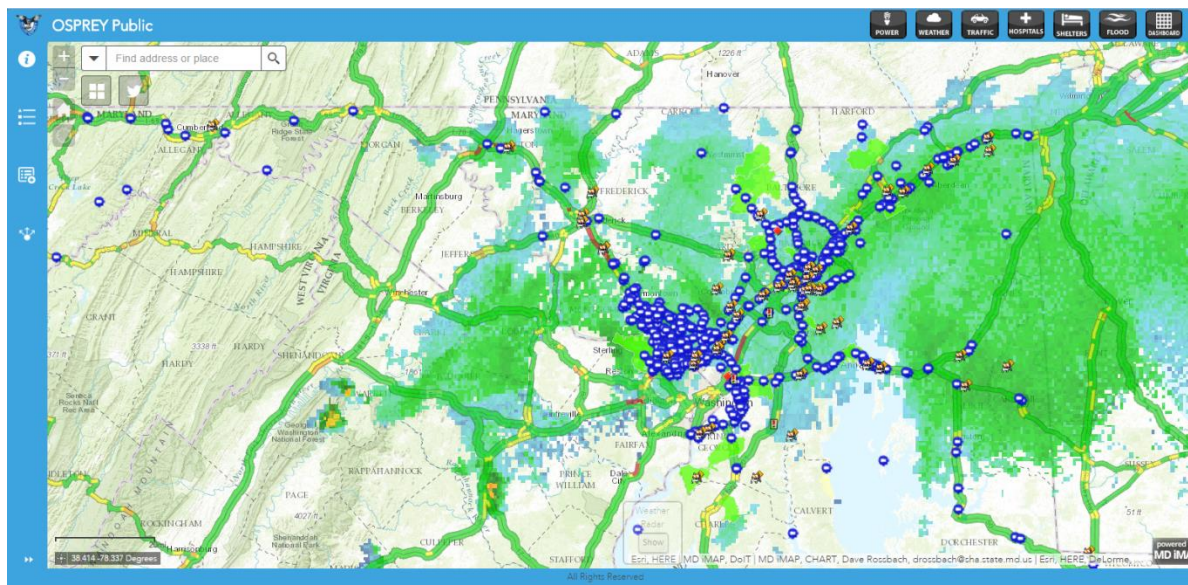
# Maryland State Geographic Information Committee

A commitment to excellence in the development and coordination of geographic information technologies.

## OSPREY Public

<http://geodata.md.gov/ospreypublic>

- Developed in Web AppBuilder
- Faster performance
- Improved responsive design
- Easy to use layer widget
- Additional basemaps available







## Maryland State Geographic Information Committee

A commitment to excellence in the development and coordination of geographic information technologies.

# Job Opening

GIS Program Manager in the  
DoIT Geographic Information Office

***Official Listing and Details Coming Soon!***





## Maryland State Department of Education Maryland Child Care Mapping Tool

- Maps the locations of licensed Child Care Programs
  - Child Care Centers
  - Family Child Care Homes
  - Large Family Child Care Homes
  - Letter of Compliance Facilities
- Developed in partnership between MSDE and Towson Univ.
- Available on both web browsers and mobile devices



## Maryland State Department of Education Maryland Child Care Mapping Tool

- Provides Information about the Services Offered by Licensed Child Care Programs
  - Location and Contact Information
  - Maryland EXCELS Quality Rating
  - Approved Days and Hours of Operation
  - Ages Served
  - Licensing Information




## Maryland State Department of Education Maryland Child Care Mapping Tool

- Search Parameters Include:
  - County and School Name OR Address
  - Distance/Radius
  - Program Type
  - Maryland EXCELS Quality Rating
  - Approved Days and Hours of Operation
- Sort Results By:
  - Distance
  - Name
  - Program Type
  - Maryland EXCELS Quality Rating
  - Ages Served



# Maryland State Geographic Information Committee

A commitment to excellence in the development and coordination of geographic information technologies.



## Maryland Child Care Mapping Tool

[f](#)[t](#)[p](#)[l](#)[e](#)

LOCATE: Child Care

1: Armistead Gardens Elementary/Middle School #243

Select County

Change School

OR

By Address

2: Set Distance

1.5 miles

3: Select Program Type

All Program Types

4: Select MD EXCELS Rating

All Ratings

5: Narrow by Schedule





Select Days

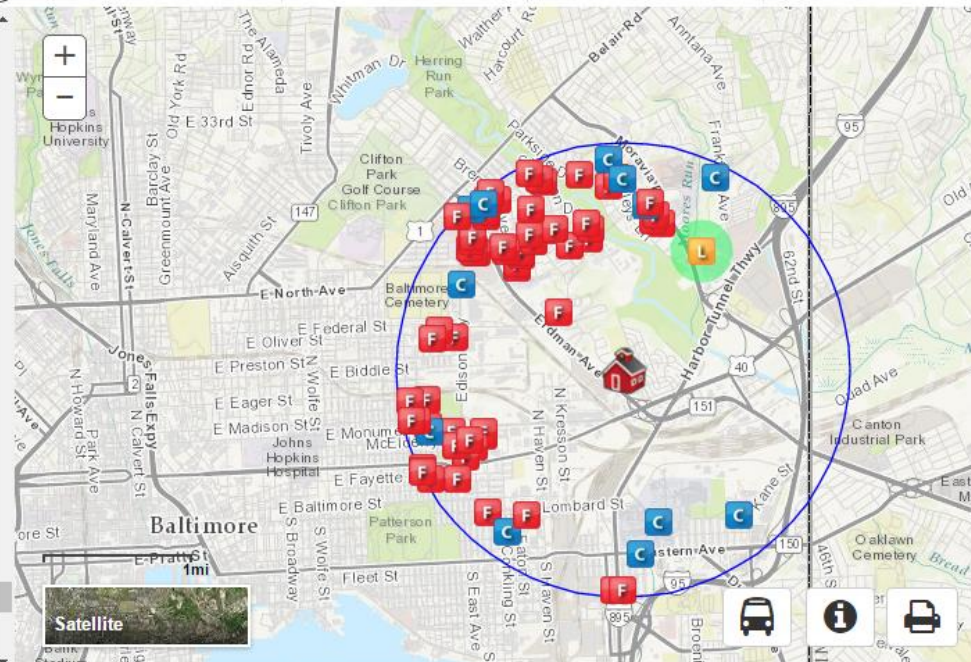
Select Months

Select Time Periods

6: View Results

Build Map

Distance	Name	Program	MD EXCELS	Age
>	 <b>Johns Hopkins Bayview Child Development Center</b>	1.03 miles away	★	
● CHILD CARE CENTER Serving Ages: 2 - 5, 5 + MD EXCELS Quality Rating: ✓✓✓✓✓				
>	 <b>Pleasant, Brenda</b>	1.11 miles away	★	
● FAMILY CHILD CARE HOME Serving Ages: 2 - 5, 5 +				
>	 <b>Simms, Towanna</b>	1.15 miles away	★	
● FAMILY CHILD CARE HOME Serving Ages: 2 - 5, 5 + MD EXCELS Quality Rating: ✓				
>	 <b>St. Vincent De Paul Headstart</b>		★	



Satellite

MSDE Privacy Statement Disclaimer | Copyright © 2016 MSDE | Built by CGIS





## Maryland State Department of Education Maryland Child Care Mapping Tool

- Other “Perks”
  - Save, Email, and Print a List of Favorites
- <http://geodata.md.gov/mdcc>
- MSDE Contact: Keri Jowers, Ph.D.
  - [keri.jowers@maryland.gov](mailto:keri.jowers@maryland.gov)
  - 410-767-0583