



# Maryland State Geographic Information Committee

A commitment to excellence in the development and coordination of geographic information technologies.

## State Updates

Kevin Coyne



## MD iMAP – Status Dashboard

### All MD iMAP Services Status

✓ Operating Normally    ⚠ Performance Issues    ✖ Service Disruption    ● Capability Enabled

Search for ...

Filter By:

☐ Feature Service

☐ KML

☐ WMS

☐ WFS

|   |                 |            |             |
|---|-----------------|------------|-------------|
| > | Agriculture     | 0 Affected | 2 Services  |
| > | Biota           | 0 Affected | 13 Services |
| > | Boundaries      | 0 Affected | 5 Services  |
| > | BusinessEconomy | 0 Affected | 4 Services  |
| > | Demographics    | 0 Affected | 4 Services  |
| > | Education       | 0 Affected | 2 Services  |
| > | Elevation       | 0 Affected | 2 Services  |
| > | Environment     | 0 Affected | 11 Services |

Environment

0 Affected

11 Services

| Service Name                                   | Status | Folder      | Type      | Cached | Feature Service | KML | WMS | WFS |
|--|--------|-------------|-----------|--------|-----------------|-----|-----|-----|
| <a href="#">MD_ChesapeakeBayDeadZones</a>      |        | Environment | MapServer |        |                 |     |     |     |
| <a href="#">MD_CoastalResiliencyAssessment</a> |        | Environment | MapServer |        |                 |     |     |     |
| <a href="#">MD_CriticalAreas</a>               |        | Environment | MapServer |        |                 |     |     |     |
| <a href="#">MD_FocalAreas</a>                  |        | Environment | MapServer |        |                 |     |     |     |
| <a href="#">MD_NaturalFilters</a>              |        | Environment | MapServer |        |                 |     |     |     |
| <a href="#">MD_PointSourceDischarges</a>       |        | Environment | MapServer |        |                 |     |     |     |
| <a href="#">MD_ProtectedLands</a>              |        | Environment | MapServer |        |                 |     |     |     |
| <a href="#">MD_ProtectedLandsAcquisitions</a>  |        | Environment | MapServer |        |                 |     |     |     |
| <a href="#">MD_ResearchReserves</a>            |        | Environment | MapServer |        |                 |     |     |     |
| <a href="#">MD_SaltMarsh</a>                   |        | Environment | MapServer |        |                 |     |     |     |
| <a href="#">MD_TrustFund</a>                   |        | Environment | MapServer |        |                 |     |     |     |

> GeocodeServices

0 Affected

13 Services

> Geoscientific

0 Affected

7 Services

View Operational Status of all MD iMAP Services

Search for available services by name

Filter services by available capabilities

Report an Issue

<http://imap.maryland.gov/Pages/Full-System-Status.aspx>



## GIS SaaS Master Contract

- RFP will be released shortly – will be available on e-Maryland Marketplace
- Three Year Contract with Two 2 Year Options
- Functional Areas
  - FA I: SaaS GIS and Open Data Cloud Services
    - e.g. Cloud-based GIS or Open Data platforms, GIS-based Enterprise Asset Management, Location-based Analytics
  - FA II: SaaS GIS Data Services/Subscriptions
    - e.g. Data Feeds for Weather, Traffic, Imagery, 3D, Demographic Data, Business Data
  - FA III: SaaS Training and Support related to FA I or II purchases



## Statewide Imagery Program

### Eastern Shore Imagery Project 2016

- Last deliveries to counties
- Currently in-process of loading to MD iMAP
  - Updated Image Service
  - Updated Cached Map Service
  - Updated availability on Imagery Download Tool
  - Updated availability on GIO Dropbox

### Western Shore Imagery Project 2017

- For [buy-ups](#) – contact Lisa Lowe (lisa.lowe@maryland.gov)





# Maryland State Geographic Information Committee

A commitment to excellence in the development and coordination of geographic information technologies.



Delivered





## Statewide Training Program

- In-Person Courses
  - Thinking Spatially – [Available Online!](#)
  - Intro to ArcGIS Desktop and MD iMAP
  - Intermediate ArcGIS Online and MD iMAP
- ArcGIS Pro course coming Q2 2017
- Calendar of trainings and seats available on [MD iMAP Portal](#)

Contact Lisa Lowe (DoIT) – [lisa.lowe@maryland.gov](mailto:lisa.lowe@maryland.gov) for info





## Statewide Training Program

- Upcoming Courses:

**Course Name:** Introduction to ArcGIS Desktop and MD iMAP

**Date:** February 6 & 7 (Snow makeup date: February 9 & 10)

**Time:** 8:30 am to 4:00 pm

**Course Name:** Thinking Spatially

**Date:** February 17 (Snow makeup date: February 27)

**Time:** 8:30 am to 12:30 pm

**Course Name:** Intermediate ArcGIS Online and MD iMAP

**Date:** February 24 (Snow makeup date: February 28)

**Time:** 8:30 am to 4:00 pm

**Contact Lisa Lowe (DoIT) – [lisa.lowe@maryland.gov](mailto:lisa.lowe@maryland.gov) for info**



## MD iMAP LiDAR Services

- Statewide LiDAR Services are now available on MD iMAP
- URL Change:
  - lidar.salisbury.edu/arcgis/rest/services to  
lidar.geodata.md.gov/imap/rest/services
- Folder structure change
  - Now organized by individual County and Statewide
  - Same products
- Detailed service URL changes – <http://bit.ly/2hLKGrt>
- Old services to be turned off **Friday, February 3**
- Historic LiDAR services coming soon!





## MD iMAP LiDAR Downloads

- Pre-Defined DEMs
  - Via Dropbox
  - Include metadata, overview pyramids, and bare earth DEMs
  - Downloads by County
- Pre-Defined Point Cloud
  - LAS files by county - ***Coming Soon!***
- Focused Areas
  - Via LiDAR Download Tool - ***Coming Soon!***

LiDAR – <http://imap.maryland.gov/Pages/lidar-download.aspx>





## MD iMAP New & Updated Layers/Services

- National Register of Historic Places  
**\*UPDATED\***
- Preservation Easements **\*UPDATED\***
- Inventory of Historic Places **\*UPDATED\***
- Parcel Points **\* UPDATED \***
- Parcel Boundaries **\*UPDATED\***
- Housing Designated Areas **\*UPDATED\***
- Heritage Areas **\*UPDATED\***
- Public Schools **\*UPDATED\***
- Sea Level Change High Curve  
Model **\*NEW\***
- Licensed Animal and Plant  
Facilities **\*UPDATED\***
- Protected Lands **\*UPDATED\***
- Protected Lands Acquisitions **\*UPDATED\***
- Storm Surge **\*UPDATED\***
- Archived Storm Surge **\*NEW\***
- 5 Digit ZIP Codes **\*NEW\***
- USGS Topo Quads **\*NEW\***
- Navigable Waterways **\*UPDATED\***
- Submerged Aquatic  
Vegetation **\*UPDATED\***



# Maryland State Geographic Information Committee

A commitment to excellence in the development and coordination of geographic information technologies.

## MD iMAP – New Applications

<http://imap.maryland.gov/Pages/map-gallery.aspx>

- Growth, Planning, and Revitalization
  - [FY17 Enacted Capital Budget Map](#) (DBM/MDOT)
  - [FY17 Chesapeake Bay Budget Map](#) (DBM/MDE/MDA/DNR/MES)
- Health
  - [Maryland Radon Data](#) (DHMH)





# Maryland State Geographic Information Committee

A commitment to excellence in the development and coordination of geographic information technologies.

## MD iMAP – Stay Updated & Involved

The screenshot shows the MD iMAP website with a navigation bar (HOME, DASHBOARDS, MAPS, DATA, INITIATIVES, INNOVATE, SUPPORT, TRAINING, PARTNERS) and a search bar. The main content area includes a 'STATEWIDE GIS TRAINING PROGRAM' banner, a 'Status Dashboard' with a table of service statuses, a 'Tweets by @MDiMAP' section, and a 'SUBSCRIBE' button. The footer features a photo of Maryland Governor Larry Hogan and Lt. Governor Boyd K. Rutherford, a 'TRAINING SCHEDULE' calendar, and a 'SUBSCRIBE' button.

| Service           | Status             |
|-------------------|--------------------|
| LIDAR             | Operating Normally |
| Composite Locator | Operating Normally |
| Imagery           | Operating Normally |
| Other Services    | Operating Normally |

Tweets by @MDiMAP

MD iMAP @MDiMAP  
NEW APP: MD Radon Data | Explore Radon levels measured in homes by ZIP code | [maps.dhmh.maryland.gov/eh/radon](#) | @MarylandDHMH @MDEnvironment @EPA

MD iMAP @MDiMAP  
MD iMAP Update - January 2017  
[links.gd/2/33rrr...](#)

TRAINING SCHEDULE  
Learn about GIS-related training happening throughout Maryland.

SUBSCRIBE  
Sign up to receive the latest MD iMAP news and alerts.

### Status Dashboard

- Operational Status of Popular Services
- Report an Issue

### Twitter

- @MDiMAP

### Subscribe

- Email Notifications, Tech Committee Meeting

Monthly MD iMAP Technical Committee Meetings  
All are welcome!





## MDOT State Highway Geospatial Technologies **JavaScript/HTML5 Applications**

### 1) Mobility and Economy Dashboard

- Mobility is a key performance area (KPA) at SHA which aims to "Support Maryland Economy and Communities with Reliable Movement of People and Goods".
- Goals: identify successes, challenges, and strategies being utilized to improve the transportation services SHA delivers to Marylanders and the traveling public; drive investment related decisions and make the best use of transportation revenues using data driven performance based approaches.



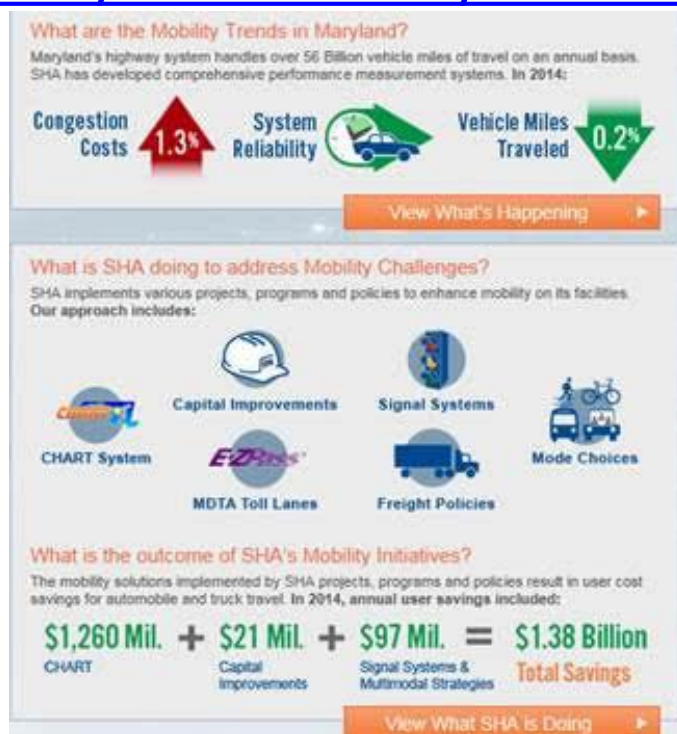


# Maryland State Geographic Information Committee

A commitment to excellence in the development and coordination of geographic information technologies.

## MDOT State Highway Geospatial Technologies JavaScript/HTML5 Applications

### 1) Mobility and Economy Dashboard





## MDOT State Highway Geospatial Technologies **JavaScript/HTML5 Applications**

### 2) Asset Management - Soft Release slated for FY17 Q3

- Asset Management entails taking a strategic approach to better manage our physical transportation infrastructure based upon asset condition data and performance expectations.
- Goal: obtain the best results, or performance, for the preservation, improvement, and operation of infrastructure assets given the resources available.
- The Asset Management Dashboard showcases the conditions of our bridges and pavement, as well as our system preservation and rehabilitation efforts.





## MDOT State Highway Geospatial Technologies **JavaScript/HTML5 Applications**

### 3) SHA Enterprise GIS (eGIS) Portal - Internal, Release FY18 Q1

- SHA is migrating their eGIS Portal from Flex API to JavaScript API
- Visualizes, Collects, and Maintains assets and transportation data for 500+ users with 100+ map services and 50+ widgets





## MDOT State Highway Geospatial Technologies Infrastructure

- Migration of all ArcGIS Servers from 9.3/10.0 to 10.3.1





## MDOT State Highway Geospatial Technologies **ArcGIS Online and Story Maps**

### 1) Know Your Roads and Who to Call

- The Maryland Department of Transportation (MDOT) crews maintain 17,824 lane miles of the state's highways and toll roads. If you have a pothole or your road needs plowing from a recent snow storm, use this web app to find maintenance responsibility.







# Maryland State Geographic Information Committee

A commitment to excellence in the development and coordination of geographic information technologies.

## MDOT State Highway Geospatial Technologies **ArcGIS Online and Story Maps**

### 1) Know Your Roads and Who to Call





## MDOT State Highway Geospatial Technologies **ArcGIS Online and Story Maps**

### 2) Maryland's Freight Story – FY17 Q3

- Easier communication of freight story
- Visualize freight network and proposed network
- Visualize commodities, congestion and reliability



## MDOT State Highway Geospatial Technologies **ArcGIS Online and Story Maps**

### 3) Performance Based Management Portal – FY17 Q4

- Moving Ahead for Progress in the 21st Century (MAP-21) is a milestone for the U.S. economy and the Nation's surface transportation program. By transforming the policy and programmatic framework for investments to guide the system's growth and development, MAP-21 creates a streamlined and performance-based surface transportation program and builds on many of the highway, transit, bike, and pedestrian programs and policies established in 1991.

