



## Maryland State Geographic Information Committee

A commitment to excellence in the development and coordination of geographic information technologies.

# The Maryland Child Care Mapping Tool

Developed in Partnership between the  
Maryland State Department of Education  
and  
Towson University



## Maryland State Geographic Information Committee

A commitment to excellence in the development and coordination of geographic information technologies.

# MD Child Care Mapping Tool

Goal: Help families to identify  
licensed child care providers that  
meet their child care needs



## MD Child Care Mapping Tool

- Maps the locations of licensed child care programs
  - Child care centers
  - Family child care homes
  - Large family child care homes
  - Letter of Compliance facilities
  - Icons in provider descriptions indicate
    - Head Start programs
    - Nonpublic nursery schools
    - Public prekindergarten programs



## MD Child Care Mapping Tool

- Can be used on both PCs and mobile devices
- Provides information about the services offered by licensed child care programs
  - Location and contact information
  - Maryland EXCELS quality rating
  - Approved days and hours of operation
  - Ages served
  - Licensing information



# MD Child Care Mapping Tool

- **Search parameters include**
  - **County & school name / address / zip code**
  - **Distance/Radius**
  - **Program type (center, home, etc.)**
  - **Maryland EXCELS quality rating**
  - **Approved days and hours of operation**



## MD Child Care Mapping Tool

- **Results can be sorted by**
  - **Distance/Radius**
  - **Name**
  - **Program type (center, home, etc.)**
  - **Maryland EXCELS quality rating**
  - **Ages served**





# Maryland State Geographic Information Committee

A commitment to excellence in the development and coordination of geographic information technologies.



## Maryland Child Care Mapping Tool



LOCATE: Child Care

1: Coldstream Park Elementary/Middle School # 031

2: Set Distance 1 mile

3: Select Program Type

4: Select MD EXCELS Rating

5: Narrow by Schedule

6: View Results

Select County

Change School

OR

By Address

All Program Types

All Ratings

Select Days

Select Months

Select Time Periods

Build Map

Clear Favorites

Distance Name Program MD EXCELS Age

MD EXCELS Quality Rating: ✓✓✓

> **F** Jenkins-Herriott, Chanel  
0.7 miles away

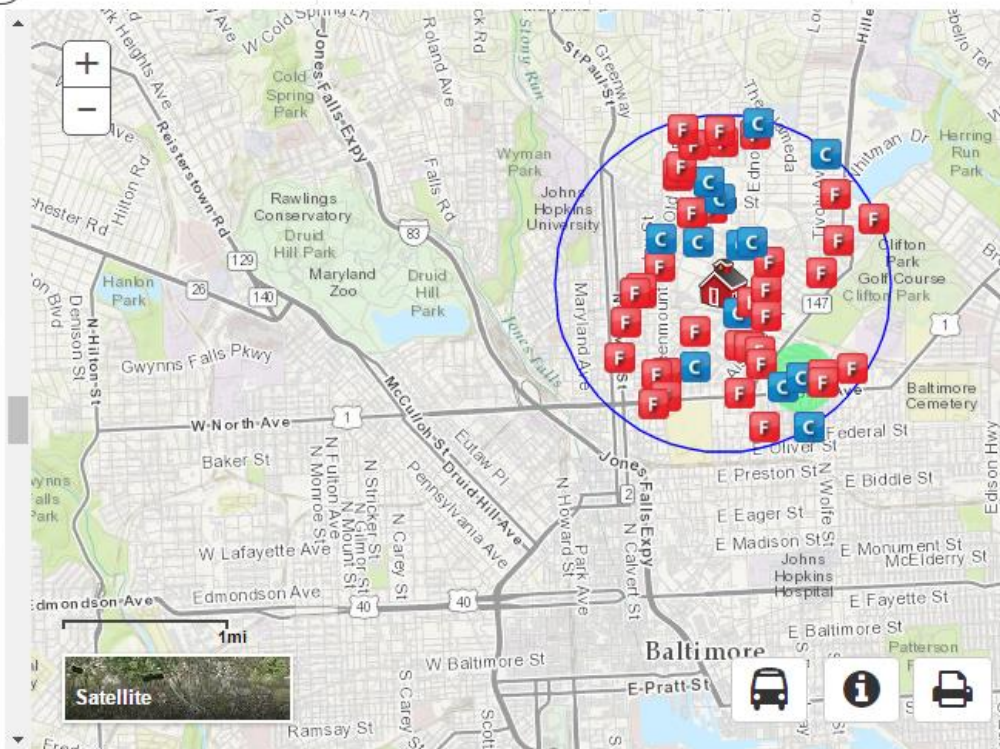
● FAMILY CHILD CARE HOME  
Serving Ages: 0 - 2, 2 - 5, 5 +  
MD EXCELS Quality Rating: ✓

> **C** Kidzstuff Child Care Center  
0.7 miles away

● CHILD CARE CENTER  
Serving Ages: 0 - 2, 2 - 5, 5 +  
MD EXCELS Quality Rating: ✓

> **C** Dayspring Headstart @ Harford Heights  
Modular / Head Start Rm. 114  
0.72 miles away Pre-K Head Start

● CHILD CARE CENTER  
Serving Ages: 2 - 5  
MD EXCELS Quality Rating: ✓





## MD Child Care Mapping Tool

- **Other “perks”**
  - Save, email, and print a list of favorites
  - Post search results to Facebook or Twitter
- **MSDE contact**
  - Keri Jowers, Ph.D. M.Ed.
  - Research Statistician, Division of Early Childhood Education
  - [keri.jowers@maryland.gov](mailto:keri.jowers@maryland.gov)
  - (410) 767-0583
- <http://geodata.md.gov/mdcc/>





## MD iMAP – Status Dashboard

### All MD iMAP Services Status

Operating Normally Performance Issues Service Disruption Capability Enabled

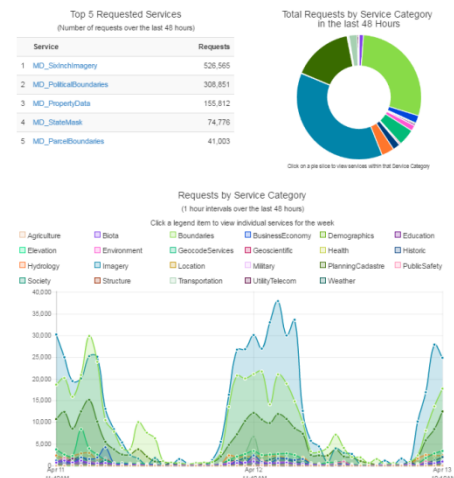
Search for \_\_\_\_\_

Filter By: ☐ Feature Service ☐ KML ☐ WMS ☐ WFS

> Agriculture	0 Affected	2 Services
> Biota	0 Affected	13 Services
> Boundaries	0 Affected	5 Services
> BusinessEconomy	0 Affected	4 Services
> Demographics	0 Affected	4 Services
> Education	0 Affected	2 Services
> Elevation	0 Affected	2 Services
> Environment	0 Affected	11 Services

Environment				0 Affected		11 Services		
Service Name	Status	Folder	Type	Cached	Feature Service	KML	WMS	WFS
MD_ChesapeakeBayDeadZones	✓	Environment	MapServer		●	●	●	●
MD_CoastalResiliencyAssessment	✓	Environment	MapServer		●	●	●	●
MD_CriticalAreas	✓	Environment	MapServer		●	●	●	●
MD_FocalAreas	✓	Environment	MapServer		●	●	●	●
MD_NaturalFilters	✓	Environment	MapServer			●	●	●
MD_PointSourceDischarges	✓	Environment	MapServer		●	●	●	●
MD_ProtectedLands	✓	Environment	MapServer		●	●	●	●
MD_ProtectedLandsAcquisitions	✓	Environment	MapServer		●	●	●	●
MD_ResearchReserves	✓	Environment	MapServer		●	●	●	●
MD_SaltMarsh	✓	Environment	MapServer		●	●	●	●
MD_TrustFund	✓	Environment	MapServer		●	●	●	●

GeocodeServices		0 Affected		13 Services		



View Operational Status of all MD iMAP Services

Search for available services and layers by name

Direct links to the GIS Data Catalog

Filter services by available capabilities

Explore Service Usage statistics

Report an Issue

<http://imap.maryland.gov/Pages/Full-System-Status.aspx>



## GIS SaaS Master Contract

- RFP released on 2/2 & closed on 4/5 – Under review
- Three Year Contract with Two 2 Year Options
- Functional Areas
  - FA I: SaaS GIS and Open Data Cloud Services
    - e.g. Cloud-based GIS or Open Data platforms, GIS-based Enterprise Asset Management, Location-based Analytics
  - FA II: SaaS GIS Data Services/Subscriptions
    - e.g. Data Feeds for Weather, Traffic, Imagery, 3D, Demographic Data, Business Data
  - FA III: SaaS Training and Support related to FA I or II purchases



## Statewide Imagery Program

### Western Shore Imagery Project 2017

- *Acquisition Completed*
- Aerotriangulation to be completed by 8/15
- Pilot area review to be completed by 7/11
- Ortho processing to be completed by 11/27
- Independent QA/QC to be completed by 12/11
- Delivery and post to MD iMAP

<http://imap.maryland.gov/Pages/imagery-status.aspx>



## Statewide Training Program

- In-Person Courses
  - Thinking Spatially – [Available Online!](#)
  - Intro to ArcGIS Desktop and MD iMAP
  - Intermediate ArcGIS Online and MD iMAP
- ArcGIS Pro course coming Q2 2017
- Calendar of trainings and seats available on [MD iMAP Portal](#)

Contact Lisa Lowe (DoIT) – [lisa.lowe@maryland.gov](mailto:lisa.lowe@maryland.gov) for info





## Statewide LiDAR Program

- Under Development
- Goals
  - Establish Regular Collection Cycle
  - Create Standard Collection Products
  - Collaborative Partnerships with Federal/State/Local Governments, Non-Profits, Academic/Research Institutions, Private Sector
- DoIT is preparing to submit application for USGS 3DEP Grant





## MD iMAP LiDAR Downloads

- DEM Downloads
  - Via Dropbox
  - Include metadata, overview pyramids, and bare earth DEMs
  - Downloads by County
- Point Cloud Downloads
  - Via [LiDAR Download Tool](#) – **Now Available**
  - Via Dropbox - LAZ files by county – **Available Q2 2017**

LiDAR – <http://imap.maryland.gov/Pages/lidar-download.aspx>



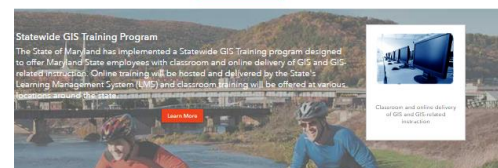
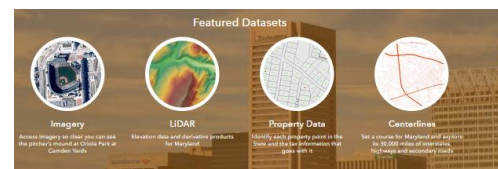
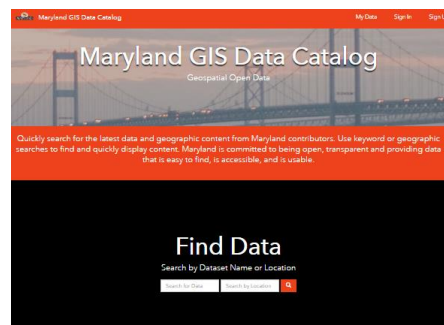


# Maryland State Geographic Information Committee

A commitment to excellence in the development and coordination of geographic information technologies.

## GIS Data Catalog

- New Look, Feel, and Experience
- Feature Datasets, Maps & Apps, Training, Open Data Initiatives
- Geo Hubs Coming Soon
  - Promote data and apps of Government agencies
  - Federate with local Geospatial Open Data
  - Initiative specific pages



Open Data

<http://data.imap.maryland.gov>





## Open Data Portal

- Search for, Share, and Download data in a variety of formats
- Comment on datasets and submit requests for new datasets
- Featured Datasets
  - Data Freshness Report
  - Real Property Assessments
- Federated with local jurisdictions open data portals
- Provide local jurisdictions with less than 100,000 people with your own open data site
- Links to GIS Data Catalog datasets

<http://data.maryland.gov>





# Maryland State Geographic Information Committee

A commitment to excellence in the development and coordination of geographic information technologies.

## MD iMAP – New Applications

<http://imap.maryland.gov/Pages/map-gallery.aspx>

- Growth, Planning, and Revitalization
  - [Maryland SmartBuy Mapper](#) (DHCD)
  - [Project C.O.R.E Mapper](#) (DHCD)







# Maryland State Geographic Information Committee

A commitment to excellence in the development and coordination of geographic information technologies.

## MD iMAP – Stay Updated & Involved

The screenshot shows the MD iMAP website with a navigation bar (HOME, DASHBOARDS, MAPS, DATA, INITIATIVES, INNOVATE, SUPPORT, TRAINING, PARTNERS) and a search bar. The main content area includes a 'STATEWIDE GIS TRAINING PROGRAM' banner, a 'Status Dashboard' with a table of service statuses, a 'Tweets by @MDiMAP' section, and a 'SUBSCRIBE' button. The footer features a 'TRAINING SCHEDULE' calendar and a 'SUBSCRIBE' button.

Service	Status
LIDAR	Operating Normally
Composite Locator	Operating Normally
Imagery	Operating Normally
Other Services	Operating Normally

Tweets by @MDiMAP

MD iMAP @MDiMAP  
NEW APP: MD Radon Data | Explore Radon levels measured in homes by ZIP code | maps.dhmh.maryland.gov/eh/radon | @MarylandDHMH @MDEnvironment @EPA

MD iMAP @MDiMAP  
MD iMAP Update - January 2017  
Inks.gd/2/33rrr\_

TRAINING SCHEDULE  
Learn about GIS-related training happening throughout Maryland.

SUBSCRIBE  
Sign up to receive the latest MD iMAP news and alerts.

### Status Dashboard

- Operational Status of Popular Services
- Report an Issue

### Twitter

- @MDiMAP

### Subscribe

- Email Notifications, Tech Committee Meeting

Monthly MD iMAP Technical Committee Meetings  
All are welcome!

