



CONNECT Platform

DEPLOYMENT OVERVIEW

JOE KOCHENDARFER, GISP

REGIONAL TECHNICAL MANAGER

DC, DE, MD, NJ, PA, VA

CONNECT Overview

CONNECT is a secure, web-based platform that combines high-resolution aerial imagery with customer GIS data to create a powerful system that is easily accessible and interactive.

- Users can upload, view and analyze their location-based data against their Pictometry high resolution Ortho & Oblique Imagery.
- Features CONNECTAdmin, an easy-to-use administrative interface that offers quick and easy management of user accounts, sub-organizations and the uploading and sharing of GIS layers.
- Includes integration options such as Integrated Pictometry Application (IPA), ArcMap Plug-In, Pictometry for ESRI Web App Builder, etc.... that offer deployment capabilities for use with existing applications or on public-facing websites.





CONNECTTMADMIN

EAGLEVIEW  PICTOMETRY

Email Address

Password

☐ Remember Me

[CONNECTAdminTM](#)

News & Updates

- ▶ Get complimentary training on all Pictometry solutions. [View the schedule.](#)
- ▶ TechCONNECT is a new way to receive notifications about technical product updates. [Sign up now.](#)

[Contact Sales](#) | [Forgot Password](#) | [Change Password](#) | [Customer Support](#)



Create/Edit Sub-Organizations & Create/Edit/Manage User Logins

Select Organization:

Westmoreland County PA

Commissioners' Office
Conservation District
Coroner's Office
District Attorney
Donegal Township
Elections Office
Land Bank
Murrysville
Park Police
Parks & Rec & Roads & Maintenance
Penn Township
Planning
Public Safety
Tax Assessment
Tax Mapping
UPI

Organization Summary

Time Remaining: 1375 Days

Summary

Info

Organization Name: Westmoreland County PA
Organization ID: 34506
Expiration Date: 07/04/2020

Users

Max User Accounts: 500
Active Users: 7
Concurrent User Limit: 100
Logged In Users: 3

Settings

Inactivity Threshold: 180



Uploading, Configuring & Sharing GIS Layers

CONNECTADMIN™

Joe Kochendarfer

Organization ▾Users ▾API Access ▾Reports ▾GIS ▾CONNECTAssessment™ ▾

Q Search Organization or User

Select Organization:

Westmoreland County PA
[Commissioners' Office](#)
[Conservation District](#)
[Coroner's Office](#)
[District Attorney](#)
[Donegal Township](#)
[Elections Office](#)
[Land Bank](#)
[Murrysville](#)
[Park Police](#)
[Parks & Rec & Roads & Maintenance](#)
[Penn Township](#)
[Planning](#)
[Public Safety](#)
[Tax Assessment](#)
[Tax Mapping](#)
[UPI](#)

GIS **Upload Your GIS Data**


Online
Upload your GIS data files through the web interface. Both Shapefiles and KML/KMZ files are supported.
[Launch Online GIS Uploader](#)

ArcMap
Upload your GIS data files, along with their display configurations, through ESRI ArcGIS Desktop.
[Download Uploader for ArcMap](#)

Desktop
Perform automated updates of your uploaded GIS data files using the Desktop Uploader and Windows Task Scheduler.
[Details...](#)
[Download Desktop GIS Uploader](#)

For assistance, contact Customer Support at 855-337-1526, or email customersupport@pictometry.com.

Uploaded GIS Data

Features must be configured into layers before they can be shared and accessed by users. To configure GIS data, click the  icon.

10 records per page

Search:

Feature Name	Shape	Uploaded On	Status	Configured	Action
No data available in table					

Showing 0 to 0 of 0 entries

[← Previous](#) [Next →](#)

© 2001-2016 Pictometry International - All Rights Reserved



CONNECTADMIN™

Organization ▾

Users ▾

API Access ▾

Reports ▾

GIS ▾

Select Organization:

Pictometry Rail Demo

Test Org

Organization

Summary

Time Remaining: 675 Days

Summary

Info

Organization Name: Pictometry Rail Demo

Organization ID: 3315

Expiration Date: 09/01/2017

Users

Max User Accounts: 100

Active Users: 12

Concurrent User Limit: 100

Logged In Users: 1

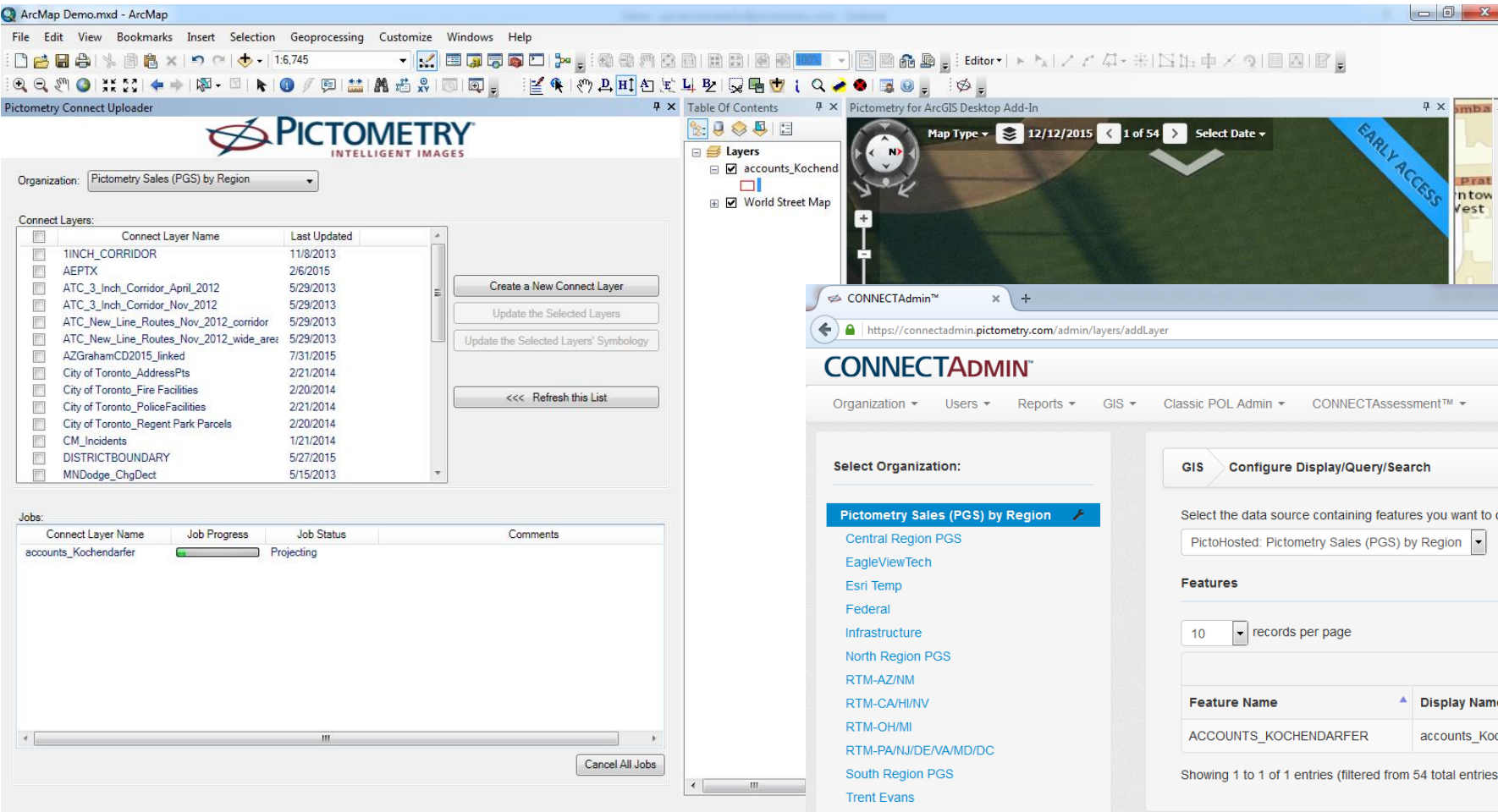
Settings

Inactivity Threshold: 60

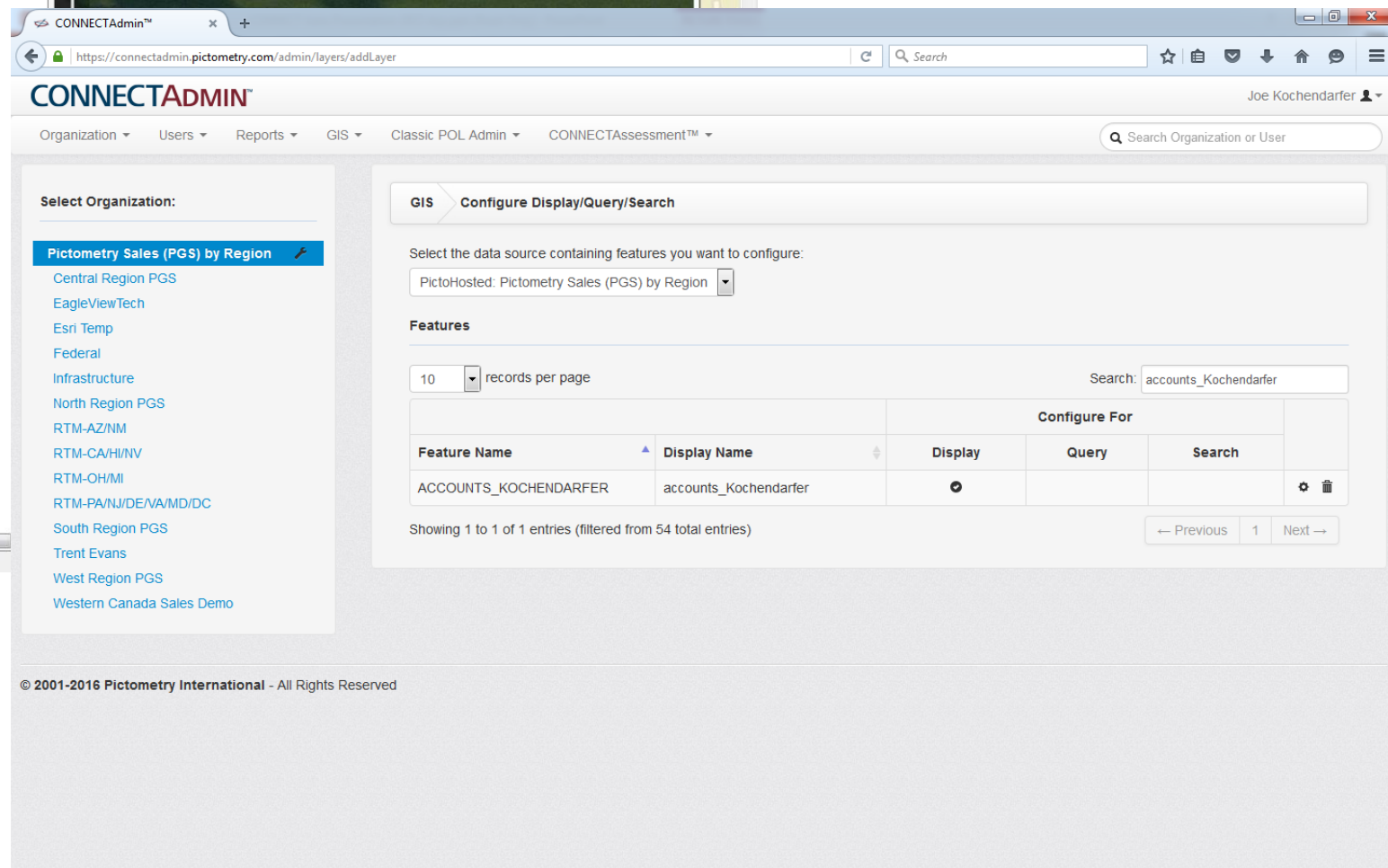
Account Information

- Time Remaining / Expiration Date
- Max Users
- Active Users / Currently Logged on
- User login count
- Image view count by timeframes

General Usage Report				
Organization	Pictometry Rail Demo			
Start Date	09-26-2015			
End Date	10-27-2015			
Pictometry Rail Demo				
Name	Logins	CONNECT Image Views	CONNECT Searches	Legacy (POL) Image Views
David Petterson	8	2	0	4

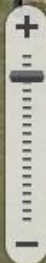


Connect Uploader for ArcMap





Full Navigation



Workspaces ▾

Collaboration Tools
Redlining
SharingSearch
Measure
Solve

Location: 40.173079, -77.150635 Degrees

Distance: 139 Feet

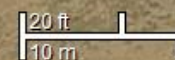
Distance: 50.8 Feet

House Height: 32.5 Feet

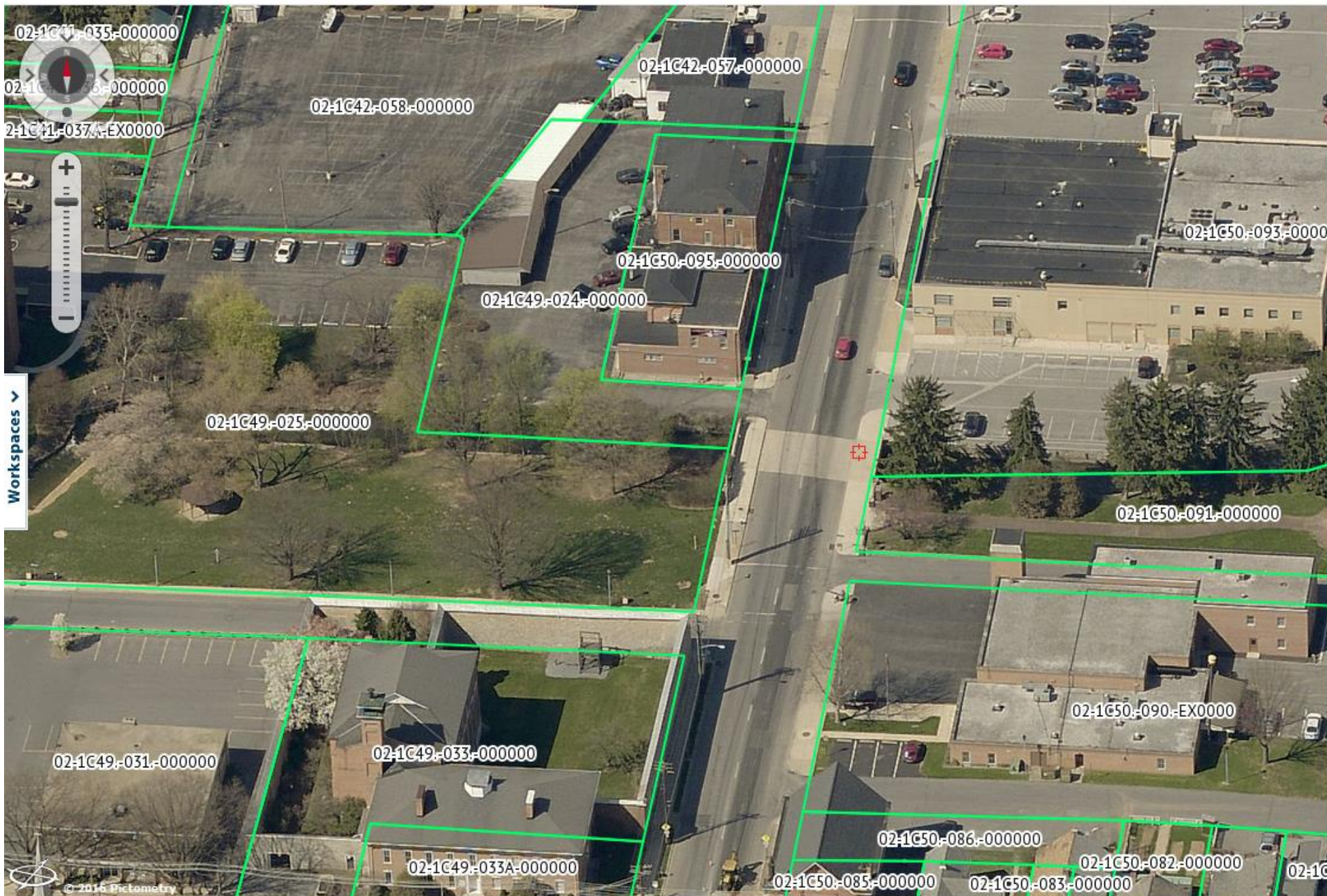
Pool Area
Area: 994.6 Square Feet
Perimeter: 125.3 Feet

Distance: 82.8 Feet

Fence Height: 6.7 Feet

New Imagery
Legacy Imagery
3rd Party ImageryCompare
Print
Export

© 2016 Pictometry



Layers

- ☐ Labels
- ☐ Contours
- ☐ School Districts
- ☐ Municipalities
- ☐ FEMA Flood Zones
- ☐ County Boundary
- ☐ Az Franklin Road Labels
- ☐ Building Footprints
- ☐ Parks
- ☐ Recycling Facilities
- ☐ Trails & Recreation
- ☐ Approx Fire Hydrant Locations
- ☐ Cemetery
- ☐ Franklin County Boundary
- ☐ Municipal Boundary
- ☐ Railroad Centerlines
- ☐ Recreation / Parks
- ☐ School District Boundary
- ☐ Trails / Pathways
- ☒ Parcel Boundaries
- ☐ Total Coverage (2016-07-01)

CONNECTAssessment

screenshot windows dual ...

assessment.pictometry.com//index.php

Search

☆

📁

🔒

⬇

🏠

💬

☰

CONNECTASSESSMENT™

Enter Parcel ID

Parcel ID

Bookmarks

Joe Kochendarfer

Review

Info

Filters

Change Type: changed

Neighborhood: Any

obscured %: Any

Change %: Any

Review Status: Closed - Matched with

Matches: 7

Start

Actions

Highlight: ☒

Matches: Back 1 of 7 Next

Status: Set Review Status ...

View/Add Comments

Export Selected

Data

Review Status: Closed - Matched with CAMA

Determination: Matched

Est. Value Change: 10000000.000

Change Type: changed

Parcel ID: 0022 03020009

Current area: 7156.10914883

Previous area: 4688.97483662

Percent change: 52.615644105

Neighborhood: 09062

Map Type

04/03/2013

7 of 18

(2013)

11305 ANTRIM CT

11308 HEARTH CT

11307 HEARTH CT

20 ft

10 m

© 2016 Pictometry

Map Type

02/24/2009

2 of 5

(2009)

11305 ANTRIM CT

11308 HEARTH CT

11307 HEARTH CT

20 ft

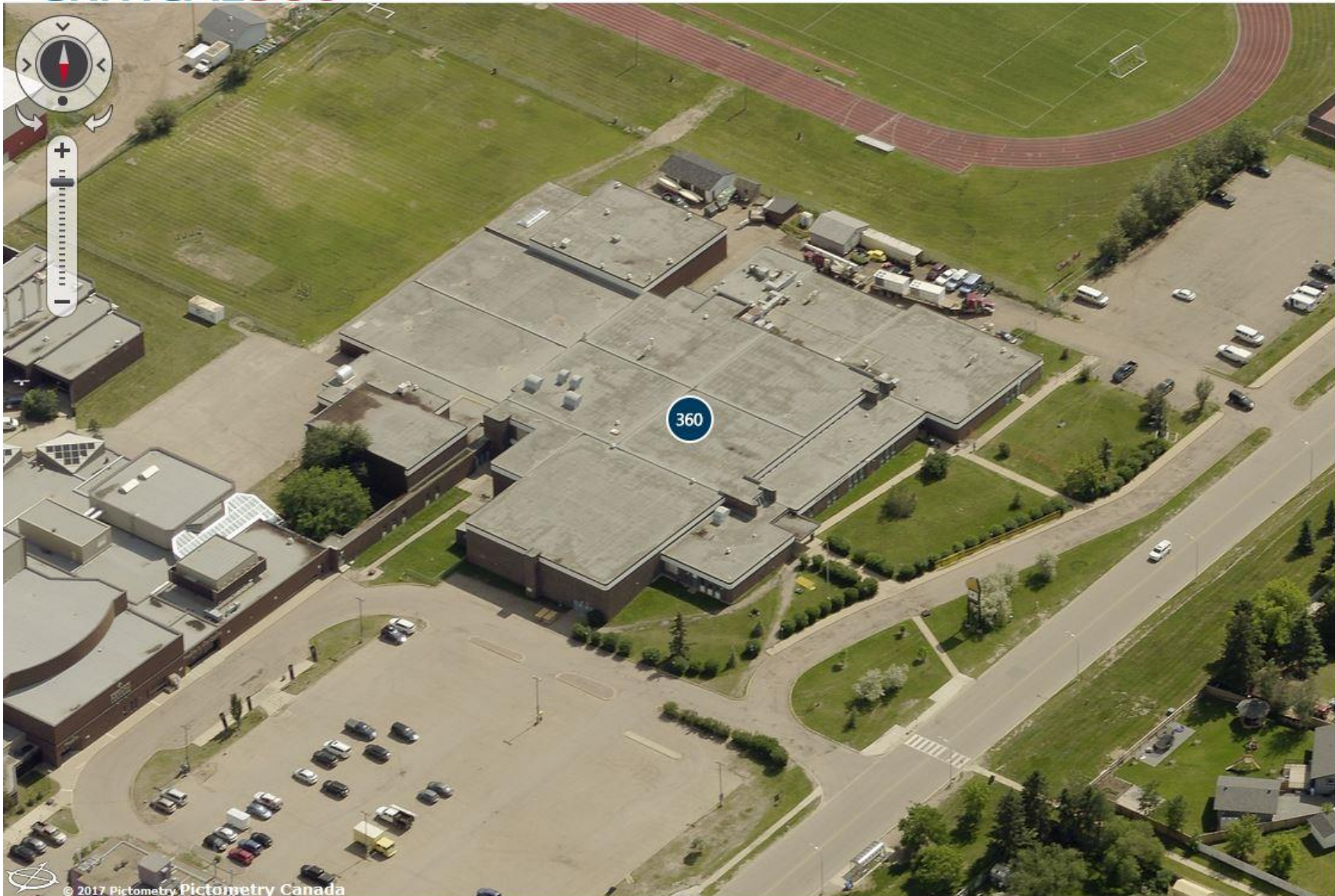
10 m






© 2016 Pictometry



CONNECT360 User Interface

CRITICAL360[®]





Search by Building ▾

Buildings (16 of 16)

[Recent](#) | [A - Z](#) | [By Category](#)

- ▶ [Anzac Community Recreation Centre - Demo](#)
- ▶ [Anzac Community School - Demo](#)
- ▶ [Anzac Municipal Office - Demo](#)
- ▶ [Anzac Water Treatment Plant New - Demo](#)
- ▶ [Beacon Hill School - Demo](#)
- ▶ [Composite High School - Demo](#)
- ▶ [Courthouse - Demo](#)
- ▶ [Eagleview Headquarters](#)
- ▶ [Eagleview Headquarters - Demo](#)
- ▶ [Fort Mac Kay Community Hall - Demo](#)
- ▶ [Fort Mac Kay Fire Hall - Demo](#)
- ▶ [Fort Mac Kay School - Demo](#)
- ▶ [Fort Mac Kay Water Treatment Plant - Demo](#)
- ▶ [Fort Mc Kay Community Arena - Demo](#)
- ▶ [Greely Road School - Demo](#)
- ▶ [Mac Donald Island - Demo](#)

© 2017 Pictometry Pictometry Canada

06/20/2016 (all) ▾

< image 1 >

Location: 56.712210, -111.351455

Search By Building/Room

CRITICAL360®

← Exit Building Composite High School - Demo > Interior > Ground Floor



Search by

Type keywords to narrow results

Floors: All | 1 | 2

10-ConstructionTechnical Lab

100- Classroom #17

101-Classroom #16

102- Teacher Work Area

102B- Storage Room

103-Staff Room

104- Classroom #18

105- Classroom #19

106- Classroom #15

107- Classroom/ Ms. Loder

108- Staff Room #1

109- Student Work Room

10B- Classroom/Office

10C- Office/Storage

10D- Restroom/Washroom

11- Incinerator Room

110- Social Study Classroom

111- Classroom #10

112- Classroom

113- Computer Lab

115- Computer Lab

116A- Seminar Room/Outer Storage Room

116B- Meter Room

117- Boys/Mens/Males/Gentlemens Restroom/Washroom

118- Girls/Womens/Females/Laides Restroom/Washroom

119- Gym Storage Room

12-Mens/Males/Gentlemens Restroom/Washroom

120- Handicap Restroom/Washroom

Orbit

Fly

Floor 1

2

1



02/02/2017

See Inside

CRITICAL360®

← Exit Building | Composite High School - Demo > Interior > Ground Floor

Search by

🔍 Type keywords to narrow results

Floors: All | 1 | 2

- 10-ConstructionTechnical Lab
- 100- Classroom #17
- 101-Classroom #16
- 102- Teacher Work Area
- 102B- Storage Room
- 103-Staff Room
- 104- Classroom #18
- 105- Classroom #19
- 106- Classroom #15
- 107- Classroom/ Ms. Loder
- 108- Staff Room #1
- 109- Student Work Room
- 10B- Classroom/Office
- 10C- Office/Storage
- 10D- Restroom/Washroom
- 11- Incinerator Room
- 110- Social Study Classroom
- 111- Classroom #10
- 112- Classroom
- 113- Computer Lab
- 115- Computer Lab
- 116A- Seminar Room/Outer Storage Room
- 116B- Meter Room
- 117- Boys/Mens/Males/Gentlemens Restroom/Washroom
- 118- Girls/Womens/Females/Laides Restroom/Washroom
- 119- Gym Storage Room
- 12-Mens/Males/Gentlemens Restroom/Washroom
- 120- Handicap Restroom/Washroom

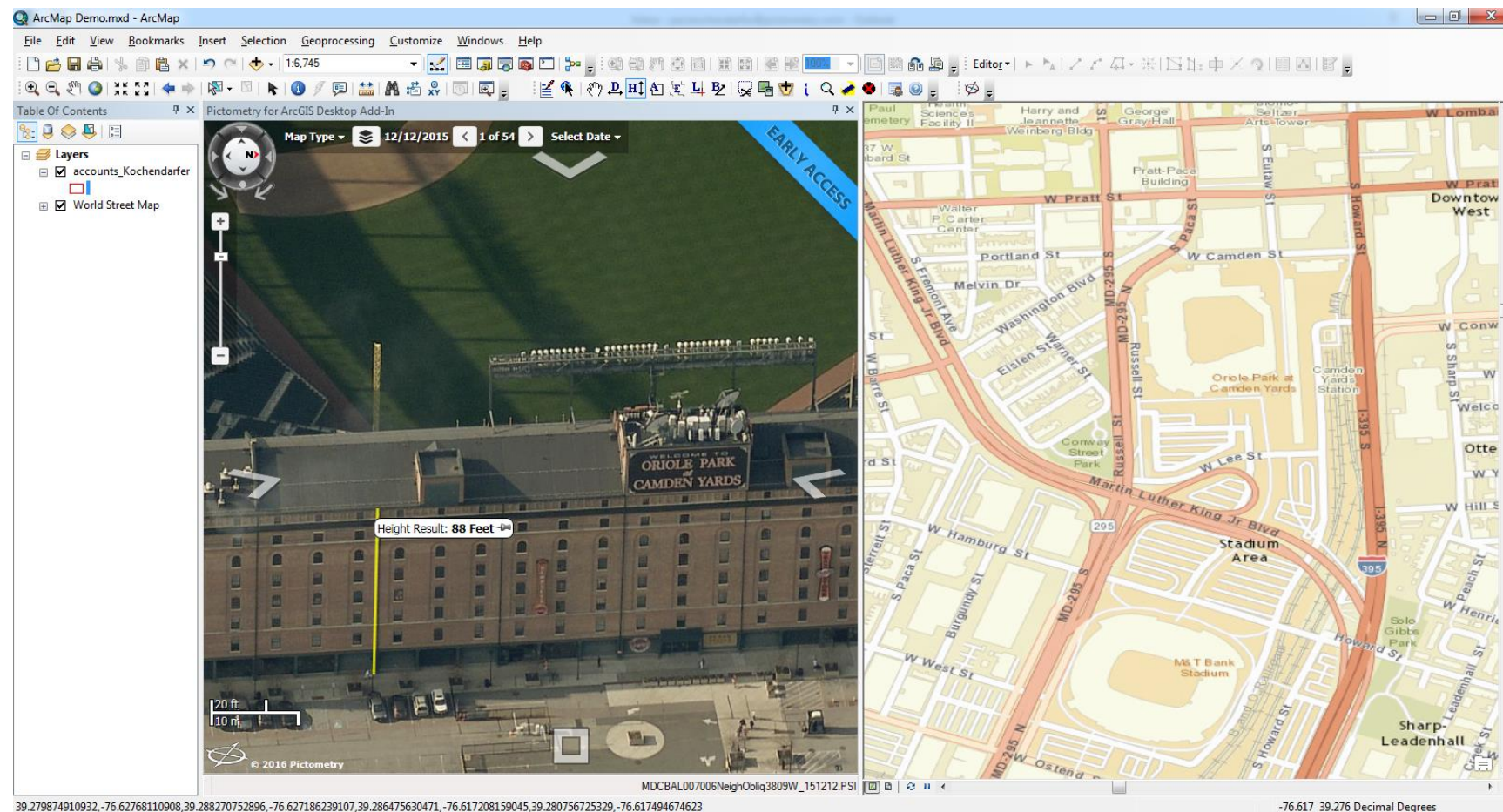
Floor 1

02/02/2017

CONNECT ArcMap Extension

- Integrates Pictometry Oblique imagery into Esri's ArcGIS Desktop product via an installed extension.
- Using the "Pictometry Search Image" tool on the toolbar and clicking on a point in the ArcMap Dataframe will open a Pictometry image for the specified location
- Key Capabilities:
 - Cloud-based, no imagery to store locally
 - Measurement Tools
 - Add Image to Map

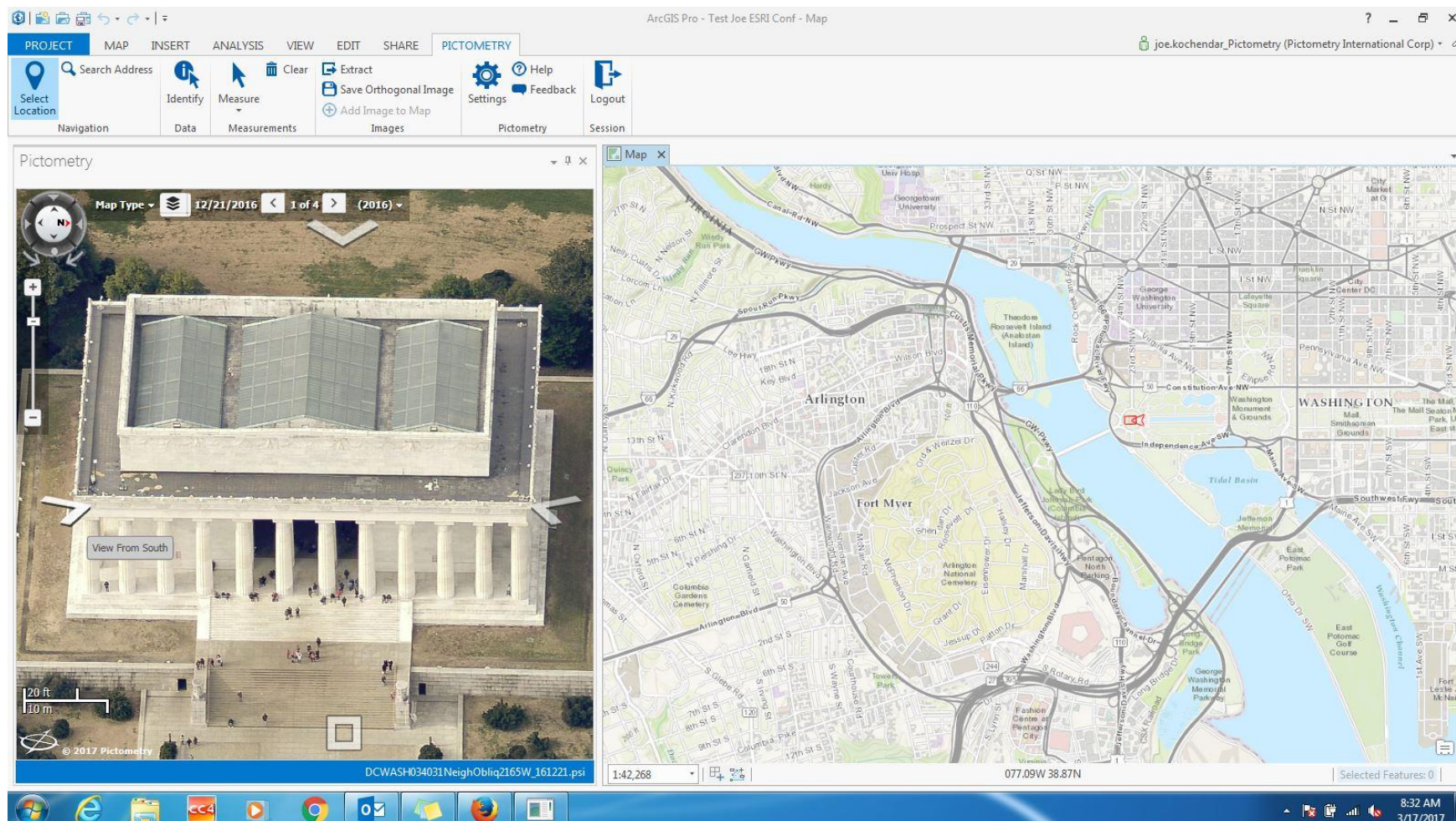
Support for:
Arc GIS Desktop 9.3, 10.0 – 10.5.1



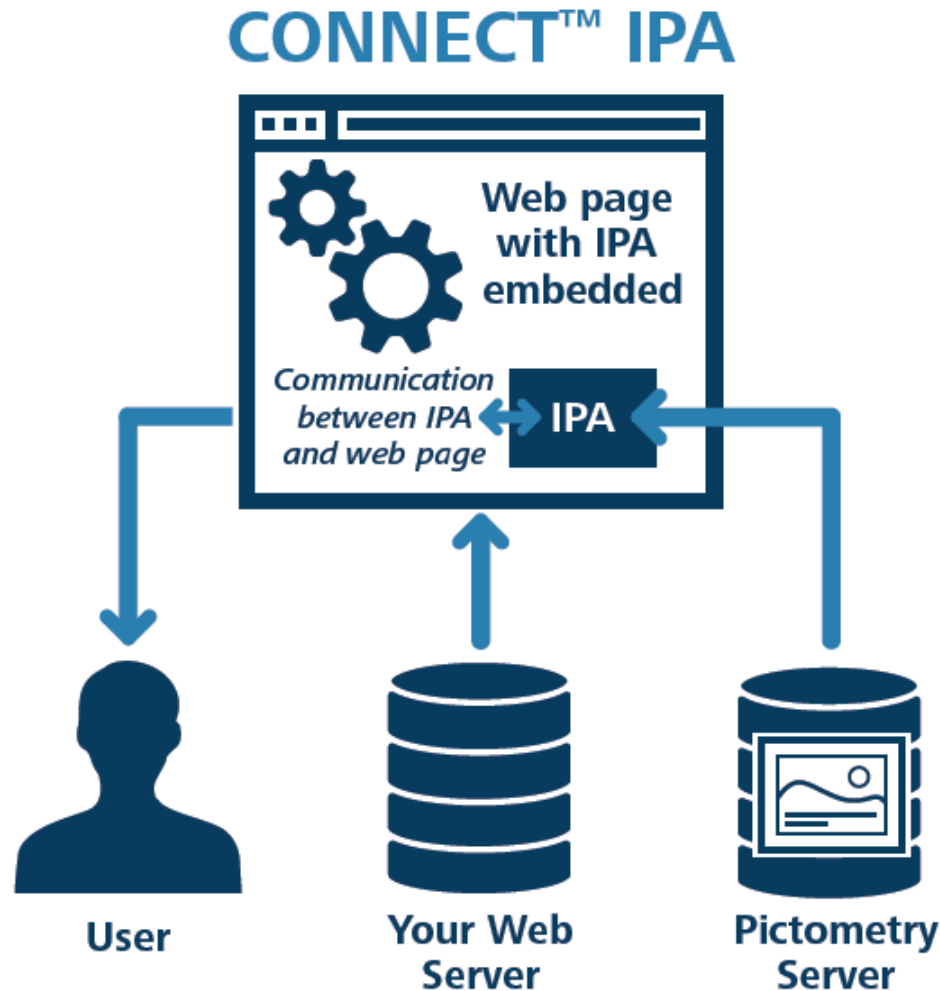
CONNECT ArcGIS Pro Extension

- Integrates Pictometry Oblique imagery into Esri's ArcGIS Pro Desktop product via an installed extension.
- Using the “Pictometry Search Image” tool on the toolbar and clicking on a point in the ArcGIS Pro Dataframe will open a Pictometry image for the specified location
- Key Capabilities:
 - Cloud-based, no imagery to store locally
 - Measurement Tools
 - Add Image to Map

Pictometry for ArcGIS Pro -
Connect Add-In for 1.3.0 - 1.3.1
(1.0.0)



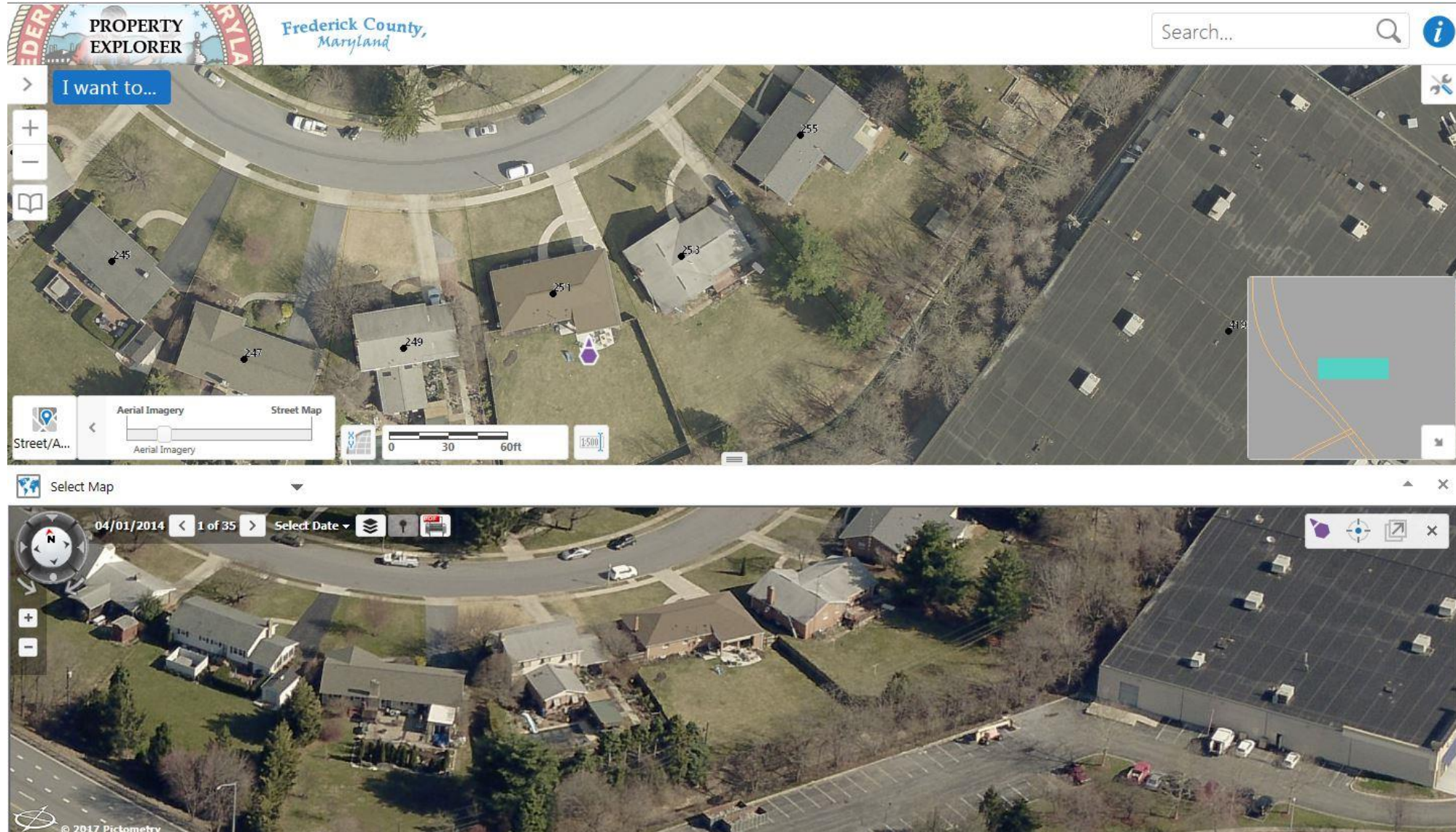
IPA – (Integrated Pictometry Application)



A web component that can be integrated with a client's application by using JavaScript and iframes. The IPA is loaded as part of their web page and connects to Pictometry via the IPA JavaScript library.



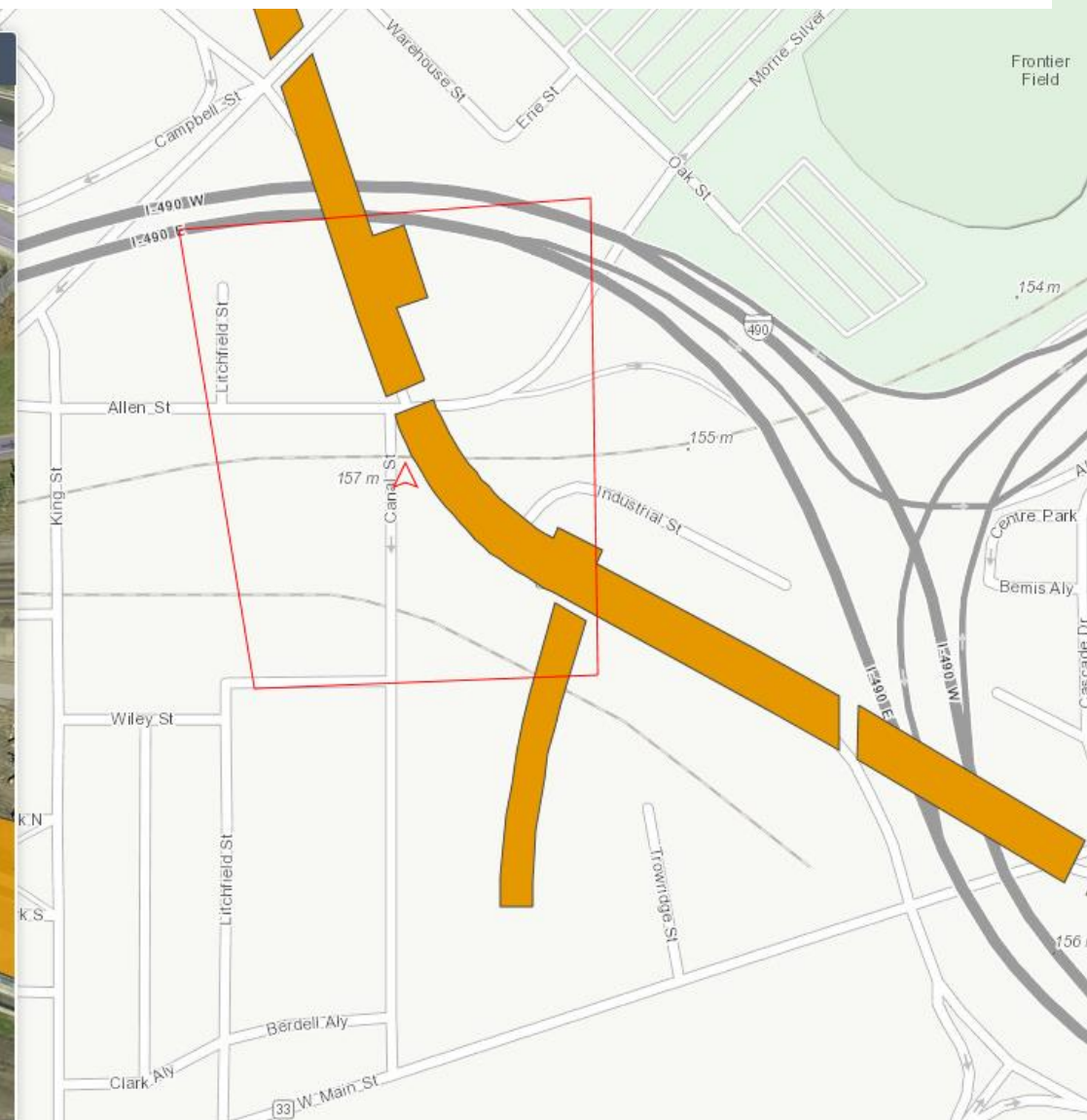
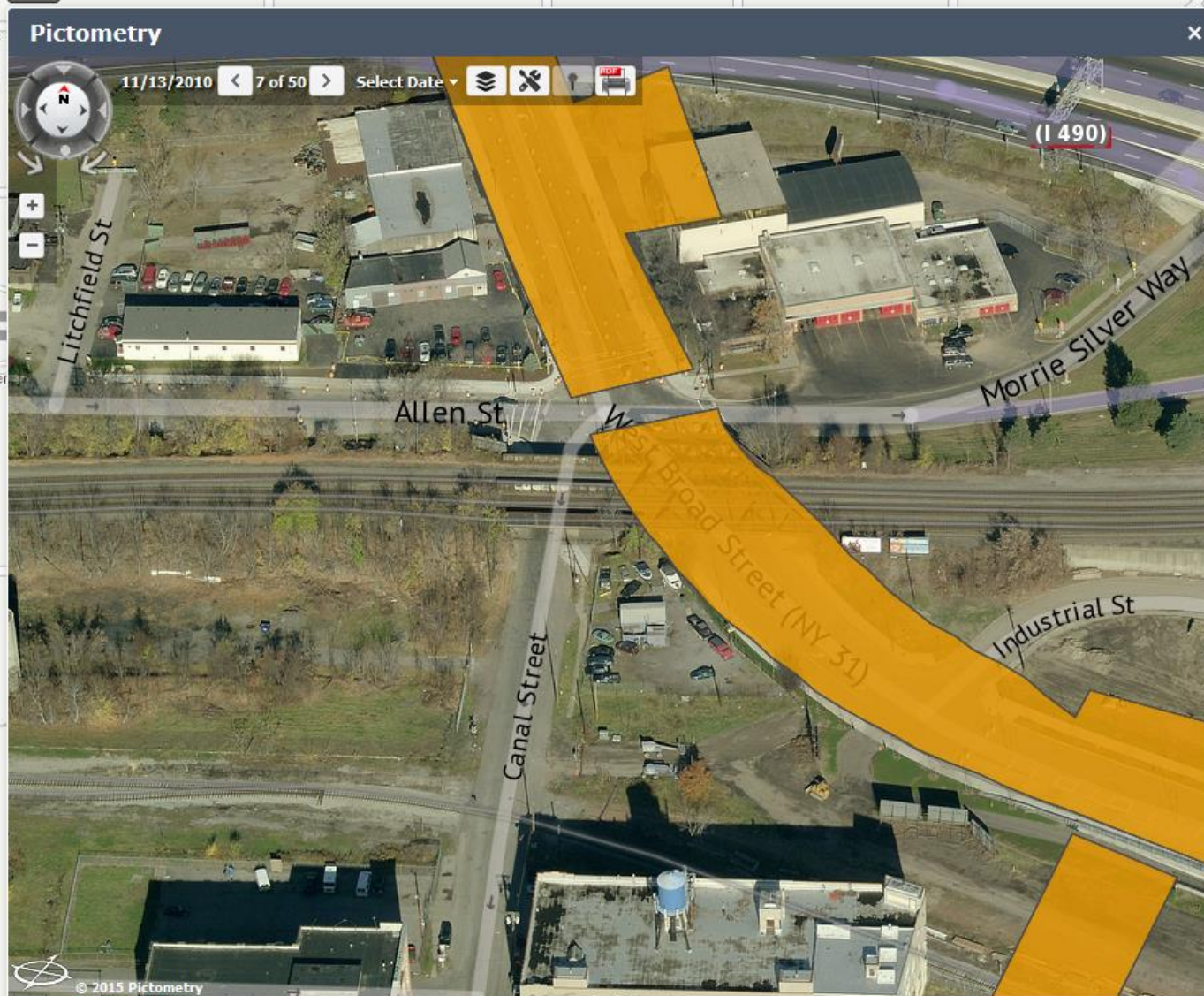
IPA (Integrated Pictometry Application) – Geocortex



The screenshot displays the Maricopa County Assessor's Office website. The main map shows a residential area with various lots. A specific property, labeled '170-02-004C', is highlighted with a red rectangle. An inset window titled 'Maricopa County Assessor's Office: Oblique Imagery - Mozilla Firefox' shows an aerial photograph of the highlighted property. The aerial view reveals a large, multi-story building complex with a swimming pool and surrounding landscape. The map interface includes a search bar, a scale bar, and a compass. The inset window also shows a date selector set to '08/20/2014' and a 'Select Date' dropdown menu. The bottom of the screen displays the geographic coordinates: 'Geographic Map Coords: Lat = 33.5229, Lon = -112.0062'.

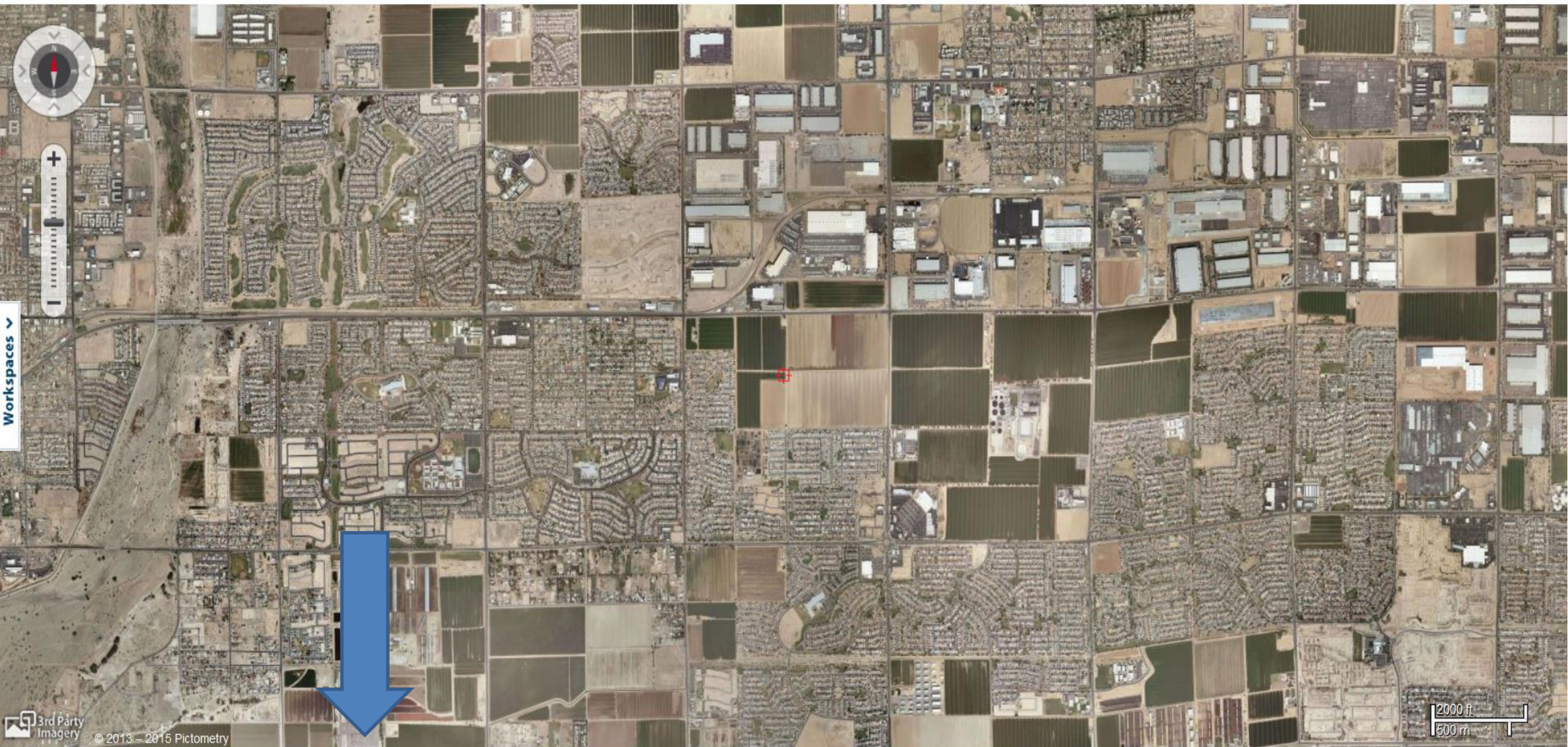


Pictometry for Esri Web AppBuilder (Developer Edition).



Imagery Services (3rd Party Orthos)

CONNECTEXPLORER™



3rd Party Imagery © 2013 - 2015 Pictometry

2000 ft
500 m

map: Mosaic ▾ 01/01/2013 - 12/31/2013 (2013 Custom Mosaic) ▾



CONNECT ImageService

View Link

WMS

<https://svc.pictometry.com/Image/0FFD145C-2478-0246-D2B5-110B93E6ED93/wms>

Copy

WMTS

<https://svc.pictometry.com/Image/0FFD145C-2478-0246-D2B5-110B93E6ED93/wmts>

Copy

TMS

<https://svc.pictometry.com/Image/0FFD145C-2478-0246-D2B5-110B93E6ED93/tms>

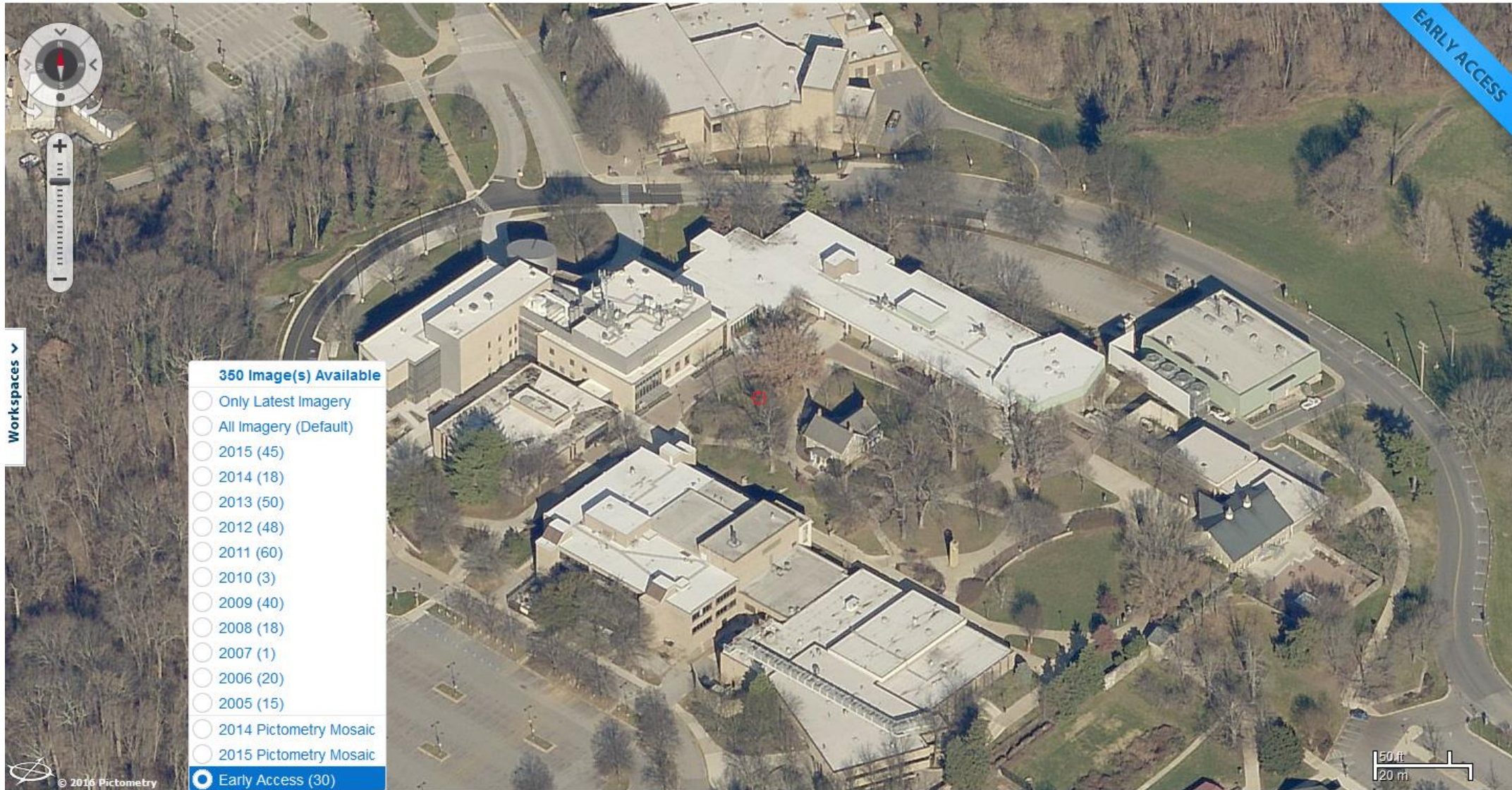
Copy

Close

CONNECTEXPLORER™



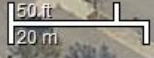
EARLY ACCESS

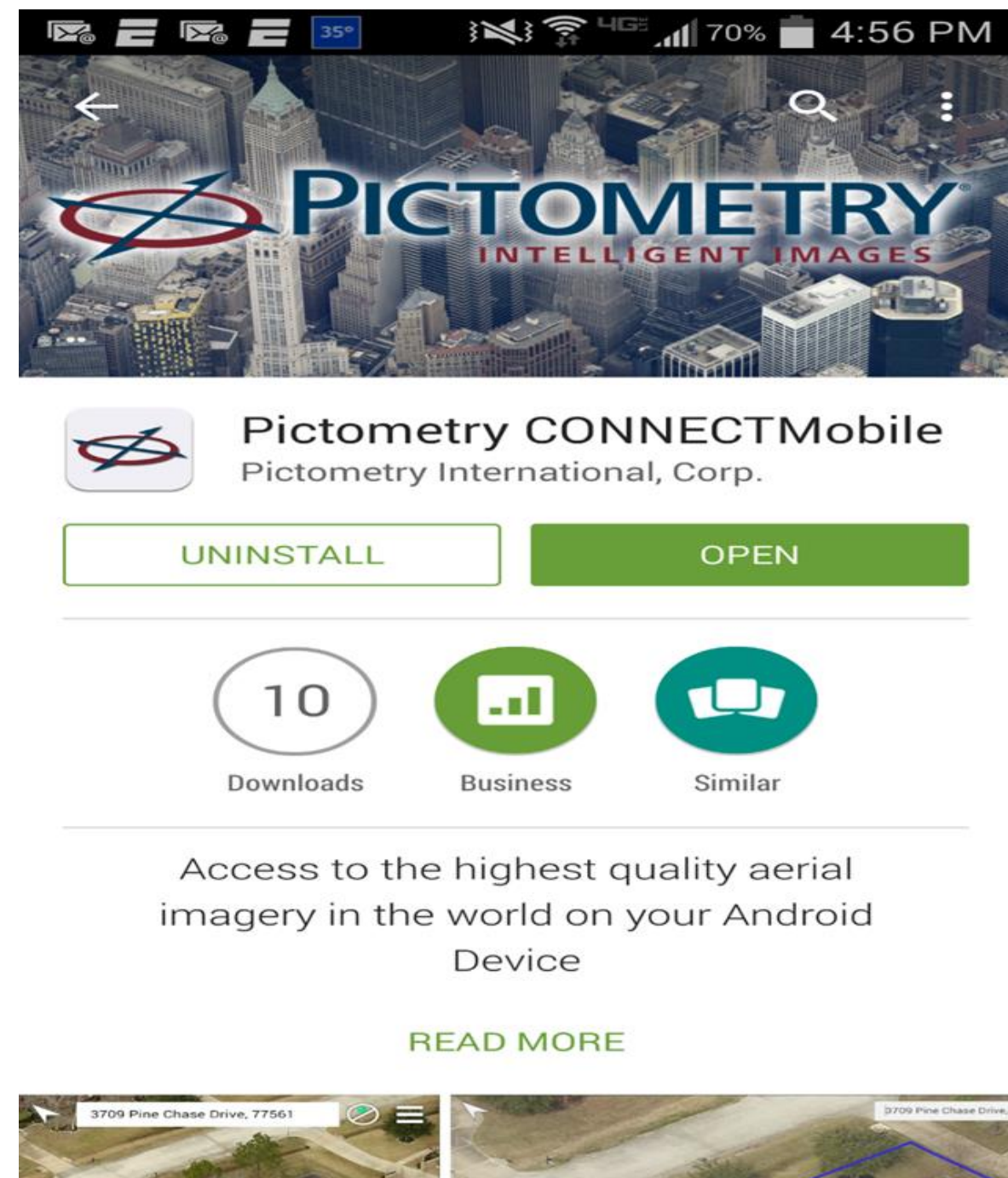
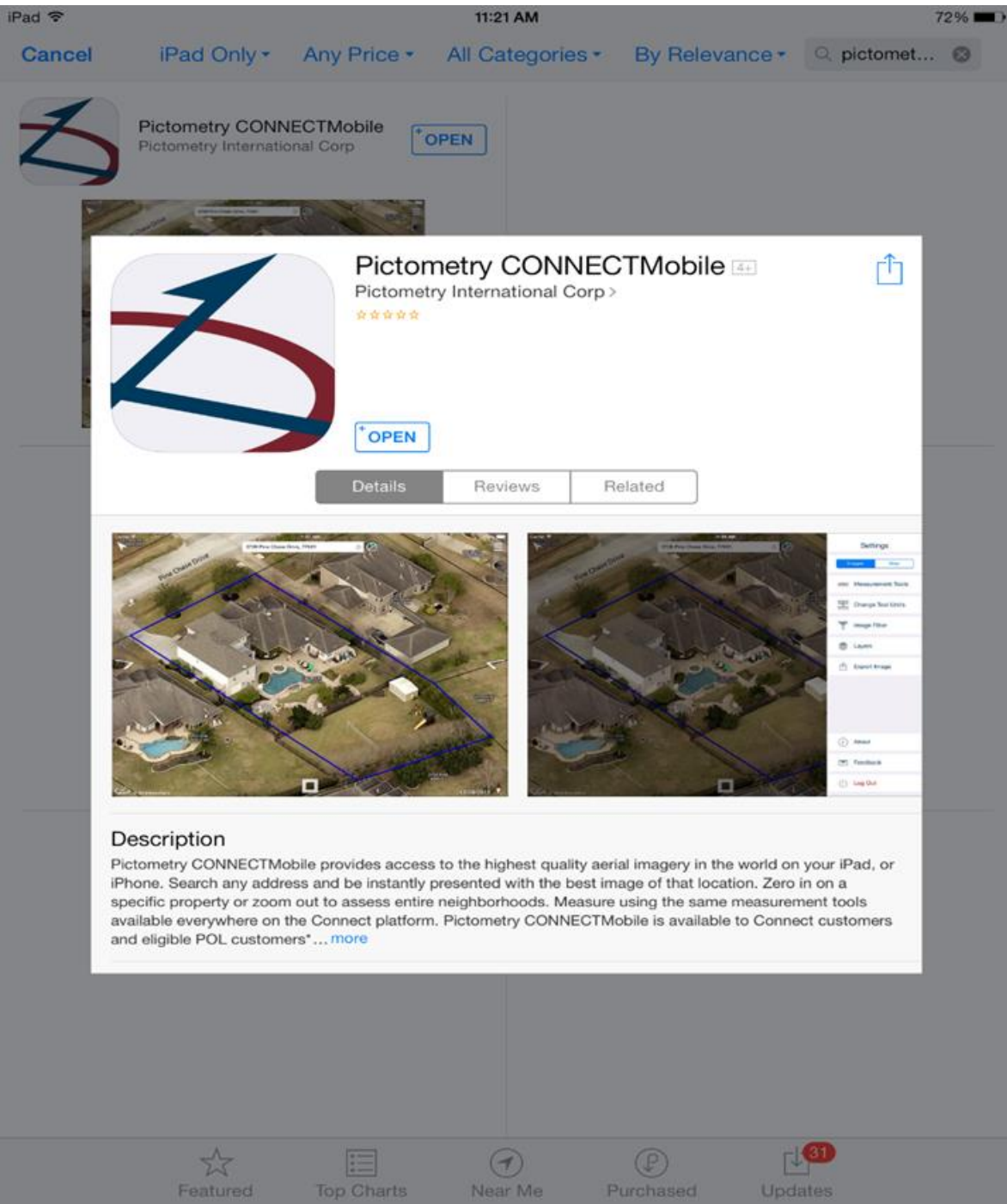


Workspaces ▾

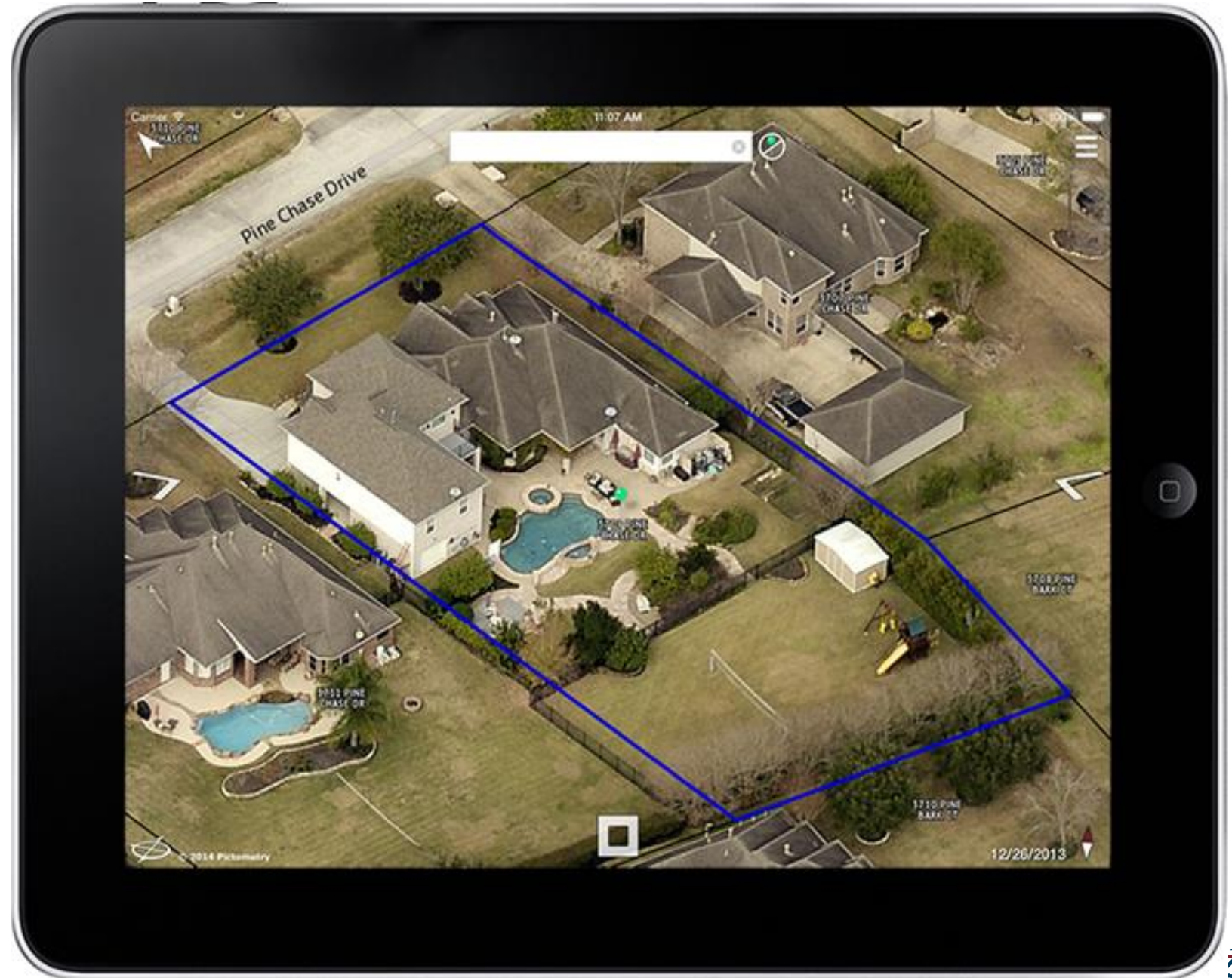
- 350 Image(s) Available**
- ☐ Only Latest Imagery
 - ☐ All Imagery (Default)
 - ☐ 2015 (45)
 - ☐ 2014 (18)
 - ☐ 2013 (50)
 - ☐ 2012 (48)
 - ☐ 2011 (60)
 - ☐ 2010 (3)
 - ☐ 2009 (40)
 - ☐ 2008 (18)
 - ☐ 2007 (1)
 - ☐ 2006 (20)
 - ☐ 2005 (15)
 - ☐ 2014 Pictometry Mosaic
 - ☐ 2015 Pictometry Mosaic
 - ☒ Early Access (30)

© 2016 Pictometry

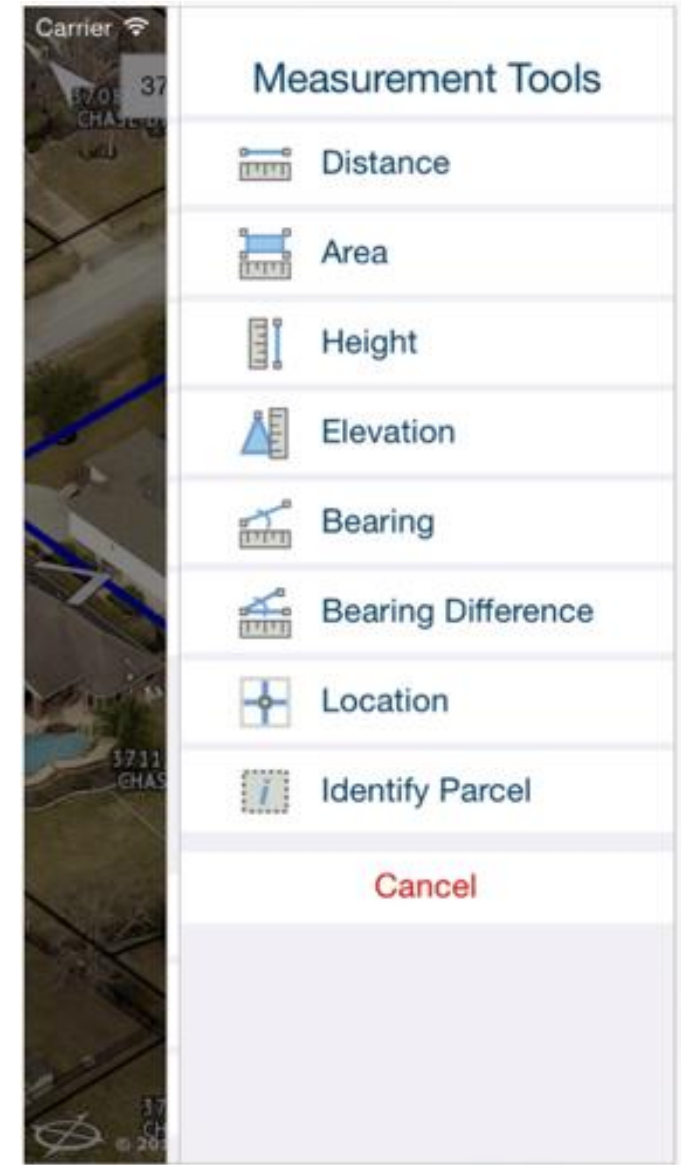
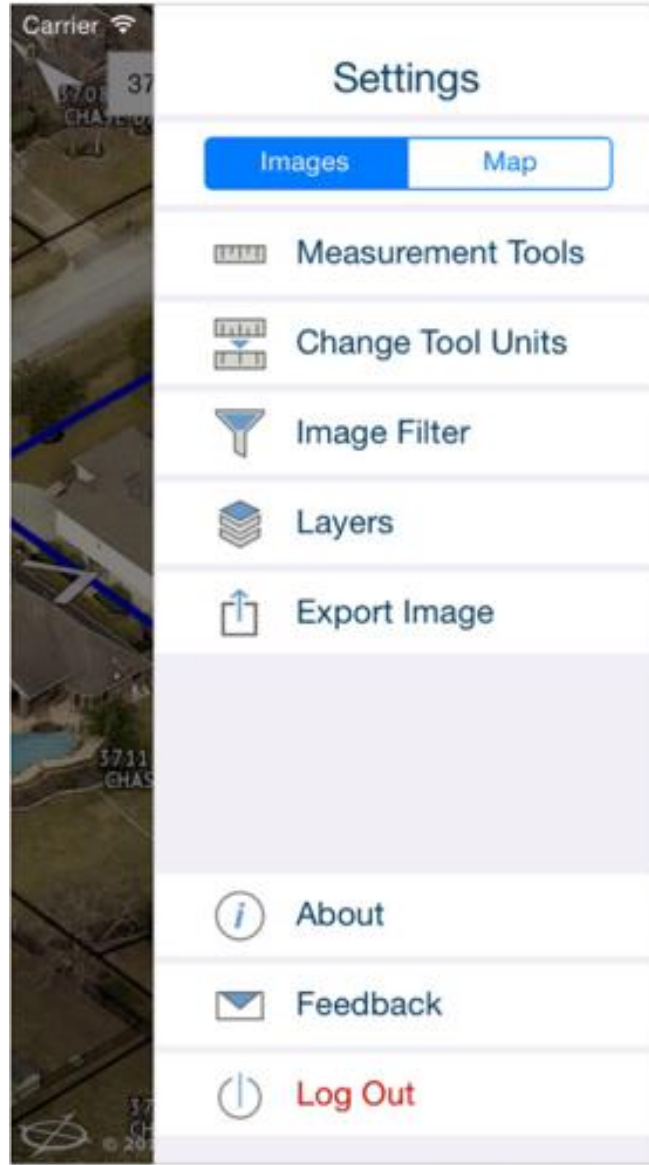




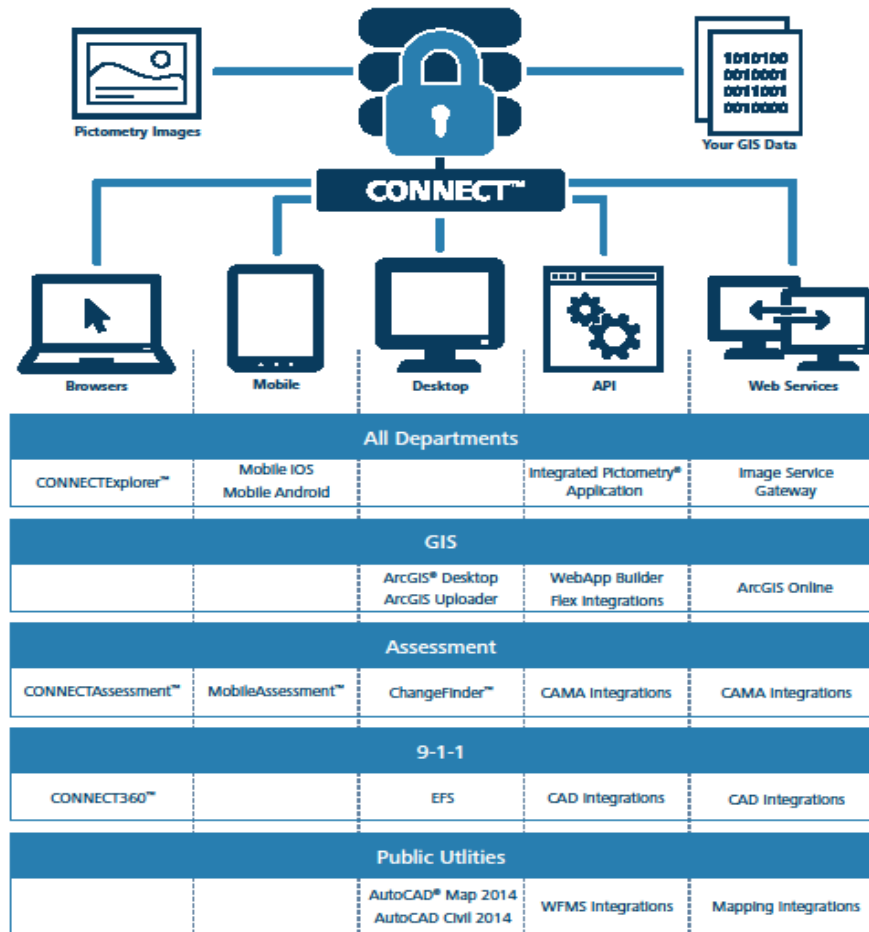
Mobile



CONNECTMobile



Enterprise **CONNECT** for Government



CONNECT™ is a secure, web-based platform that combines high-resolution aerial imagery with customer GIS data to create a powerful system that is easily accessible and interactive. Users can upload, view and analyze their location-based data against the backdrop of the highest-quality aerial imagery in the world.

All CONNECT solutions feature CONNECTAdmin™, an easy-to-use user administration interface that offers the ability to quickly and easily manage user accounts, sub-organizations, and the uploading and sharing of GIS layers.

Solutions for every department

GIS

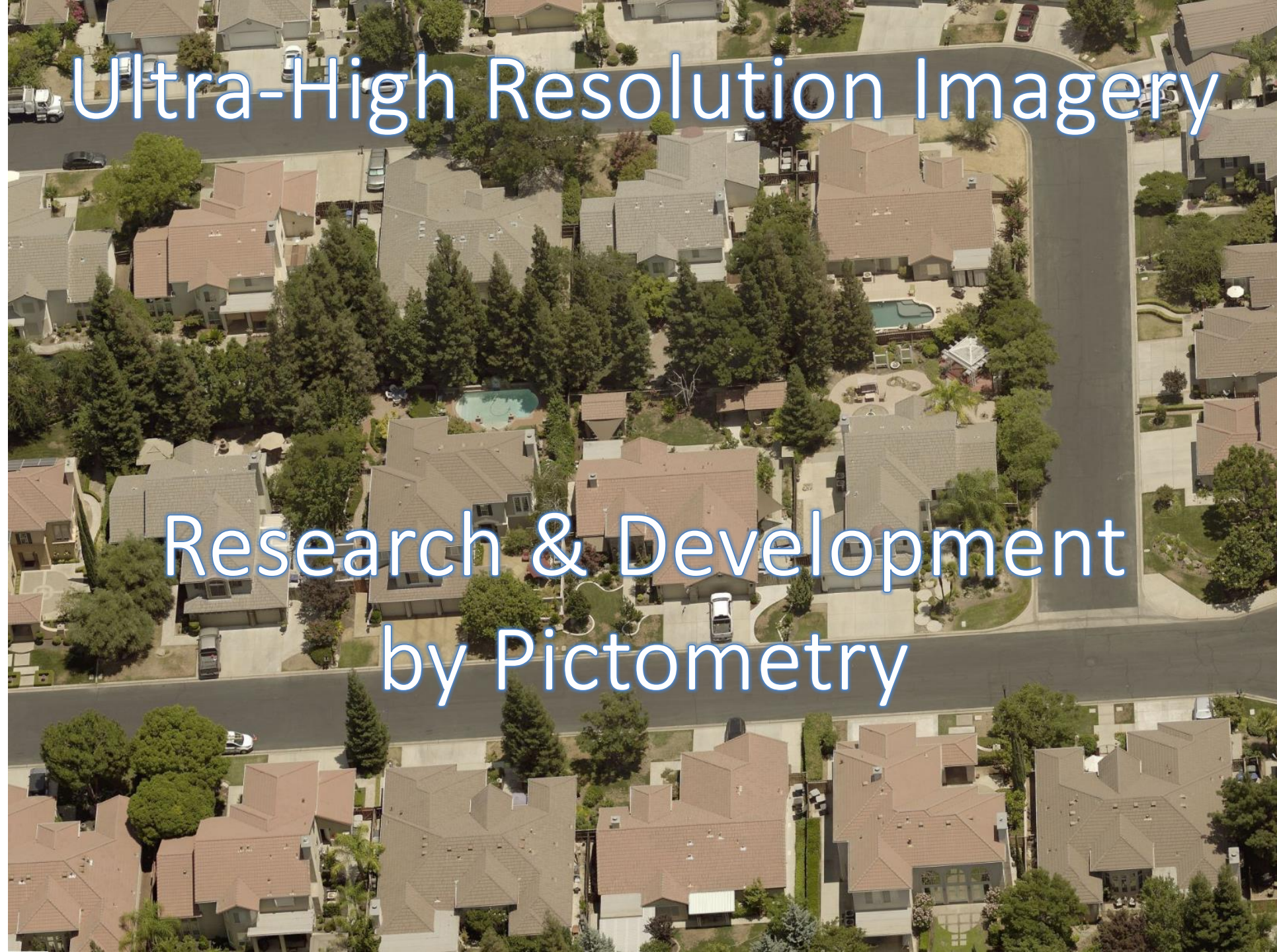
Assessment

Public Safety

Public Utilities

Planning





Ultra-High Resolution Imagery

Research & Development
by Pictometry



Look

Examine

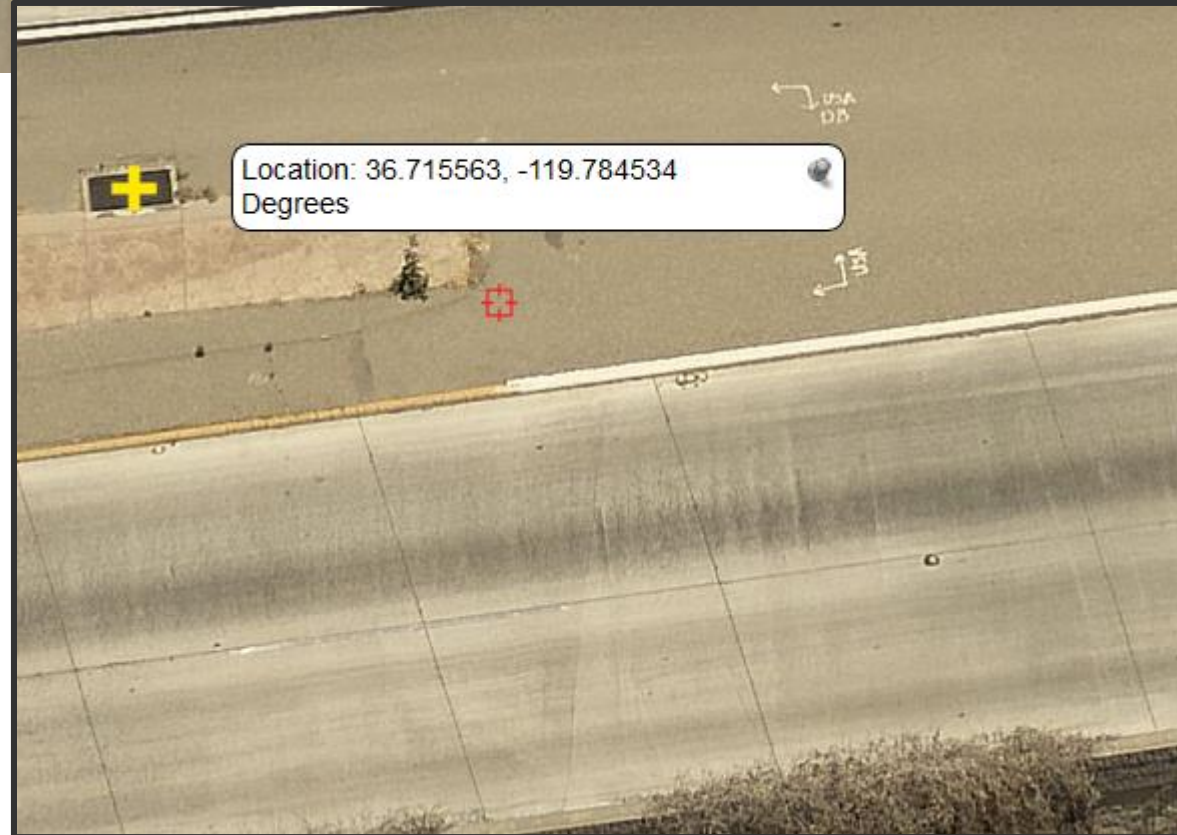


Scrutinize



Locate Highway Features & Markings

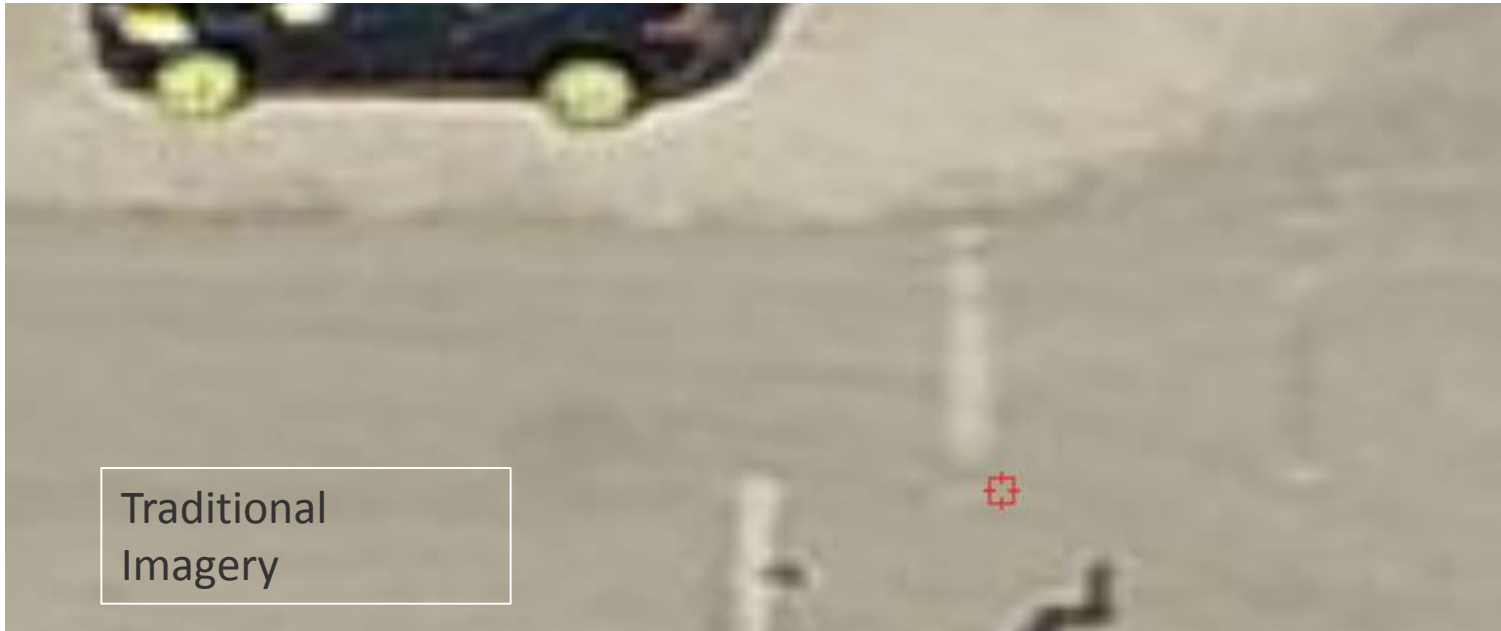
- Overhead Signs
- Catch Basins
- Road seams
- Highway markings
- Reflective lane markers
- Survey marks
- Weeds
- Accurate location





UHR Imagery

Improved
Examination
of Road
Conditions



Traditional
Imagery

GIS

1. Visualize fine detail
2. Identify or verify specific locations
 - a) Fire Hydrants
 - b) Irrigation Structures
 - c) Signs and Access Points
 - d) Chemical plant layout
 - e) Intersections and front doors

Property Assessment

Determination and Evaluation of:

1. Features of property
2. Grade of construction materials used
3. Condition of the major elements of the property
 - a) Roof
 - b) Siding
 - c) Driveway
 - d) Pool
 - e) Sidewalk
 - f) Paint
4. Otherwise unrecorded improvements
5. Otherwise unrecorded removals / demolitions

Public Safety & Security

1. Situational Awareness -- *Know Before You Go*
 - a) Chemical plant layout
 - b) Presence of flammable materials
 - c) Location of fuel storage tanks
 - d) Fence heights and gate locations
 - e) Access points and door locations
 - f) Obstructions, clutter, trees, etc.
 - g) Visualize security details
 - h) Presence of alarm system
2. Identify Caller's Location
 - a) Precise visual details to aid caller's descriptions
 - b) Note passageways to adjacent streets
 - c) Precise Lat / Long of driveway intersections and front doors

Public Works

1. Condition of highway
2. Visualize, locate and measure highway features
3. Locate seams in concrete sections
4. See Cracks and Repairs
5. Locate public assets
6. Verify markings and locations
7. Measure anything accurately
8. Examine suspected problems remotely



Questions?