

MSGIC Spring 2022 Quarterly Meeting

Presentation: State Caucus Update

J.B. Churchill & John Lesko (co-chairs)

Department of Housing and Community Development

- Project Restore - COVID \$
- Neighborhood Revitalization Map
- Project C.O.R.E (Creating Opportunities for Renewal and Enterprise)



Project Restore Number of Awards

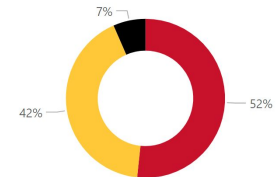
352

Project Restore Estimated Awarded Amount

\$24.0M

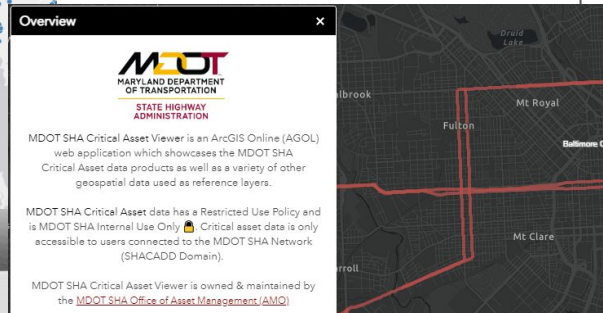
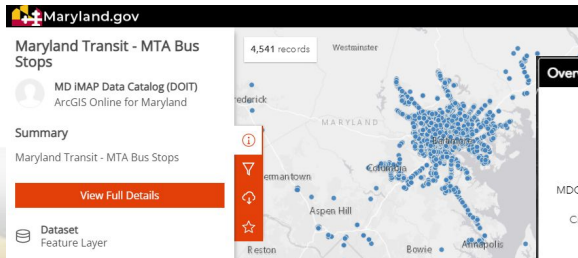
Applicants by Grant Type

● Both ● Property Assistance ● Business Operations

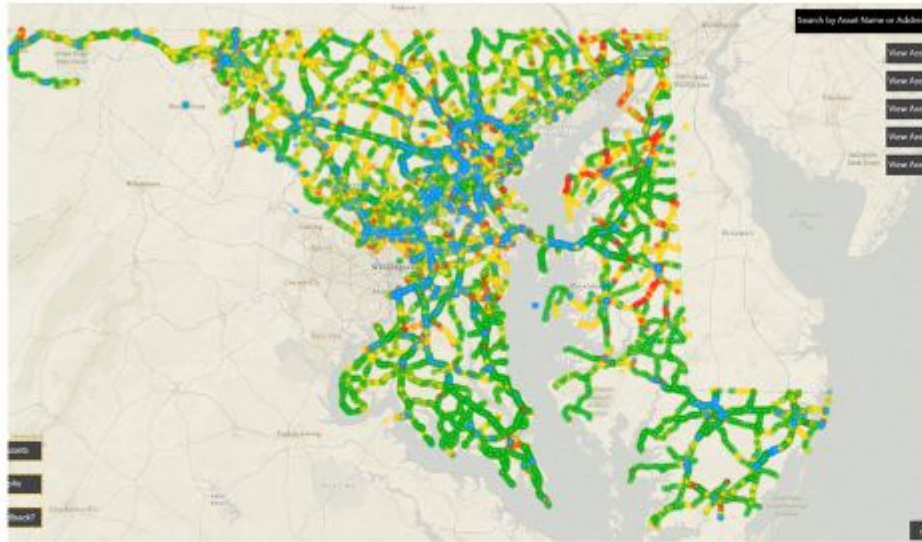


Maryland Dept. of Transportation / MD Transit Administration

- **Bus Routes and Stops** (Winter 2022 changes) in MD Transit Feature Service.
- **Stormwater BMPs, Structures, Facilities** =>MDOT's Critical Asset Tool GIS.
- **Bus Routes and Stops** => **OMOC** data (Roads and Highways network management).



one **MARYLAND**
one **CENTERLINE**
collaborative. authoritative. seamless.



DEVELOPMENT OF CRITICAL ASSET GIS TOOL

- ❖ The Secretary of Transportation's Strategic Blueprint Initiative established a goal to create a GIS Tool to view and analyze critical asset data.
- ❖ The data work of the Department Asset Management Program over the last 4 years made this effort possible in such a short period of time.
- ❖ The tool includes the following asset class data: pavement, large and small structures, noise walls, retaining walls, overhead sign structures, waterfront structures, facilities, tunnels, rail and stormwater management facilities.



CRITICAL ASSET GIS TOOL

- ❖ A Project Charter was developed over the Fall of 2021 that laid out the specific asset classes, data fields, and data maintenance requirements for the tool.
- ❖ While Asset Owners had good data, there was not always a coordinated and updated GIS dataset with the fields. This effort established good coordination protocols between asset owners and GIS professionals. Annually Asset Owners need to work with GIS professionals to ensure updated GIS datasets are provided to TSO in July.
- ❖ The Critical Asset GIS Tool enables the Department to see a consistent view of all TBU critical assets in a geospatial lens as well as provides enhanced coordination and analyze capabilities.

Road Separated Bike Routes

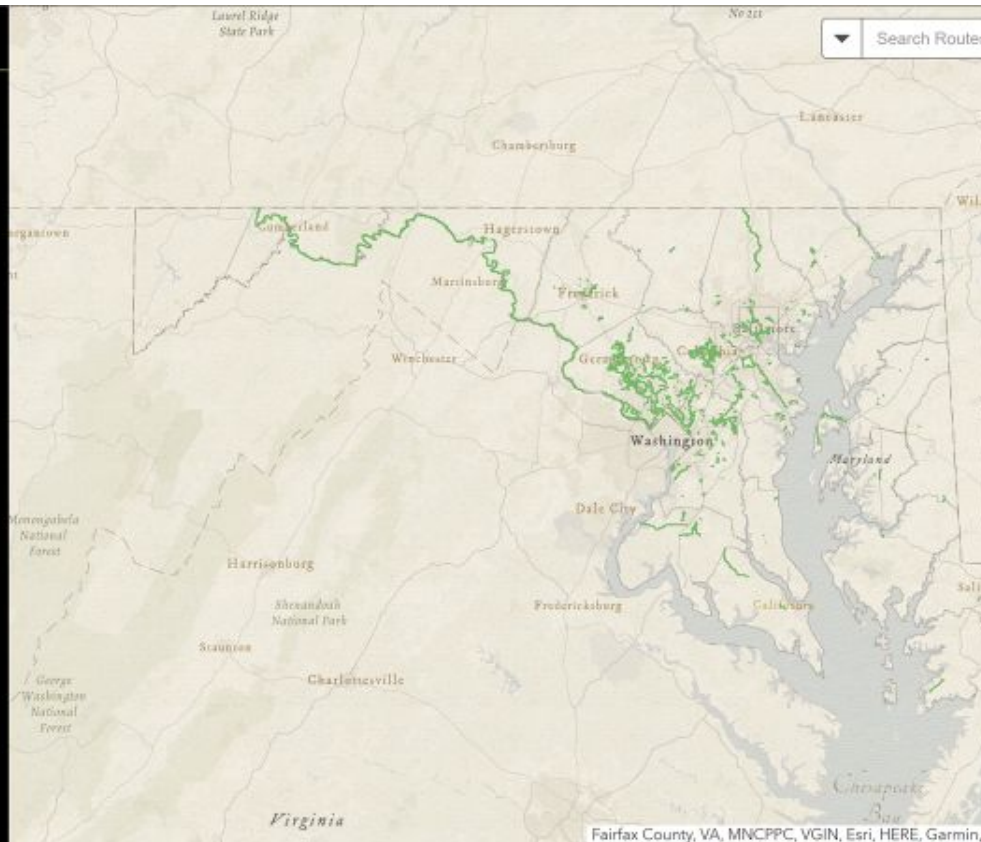
This map depicts road-separated bicycle routes throughout the State of Maryland. The routes identified are shared-use paths, typically 10-feet-wide, which can be used for transportation or recreational purposes.

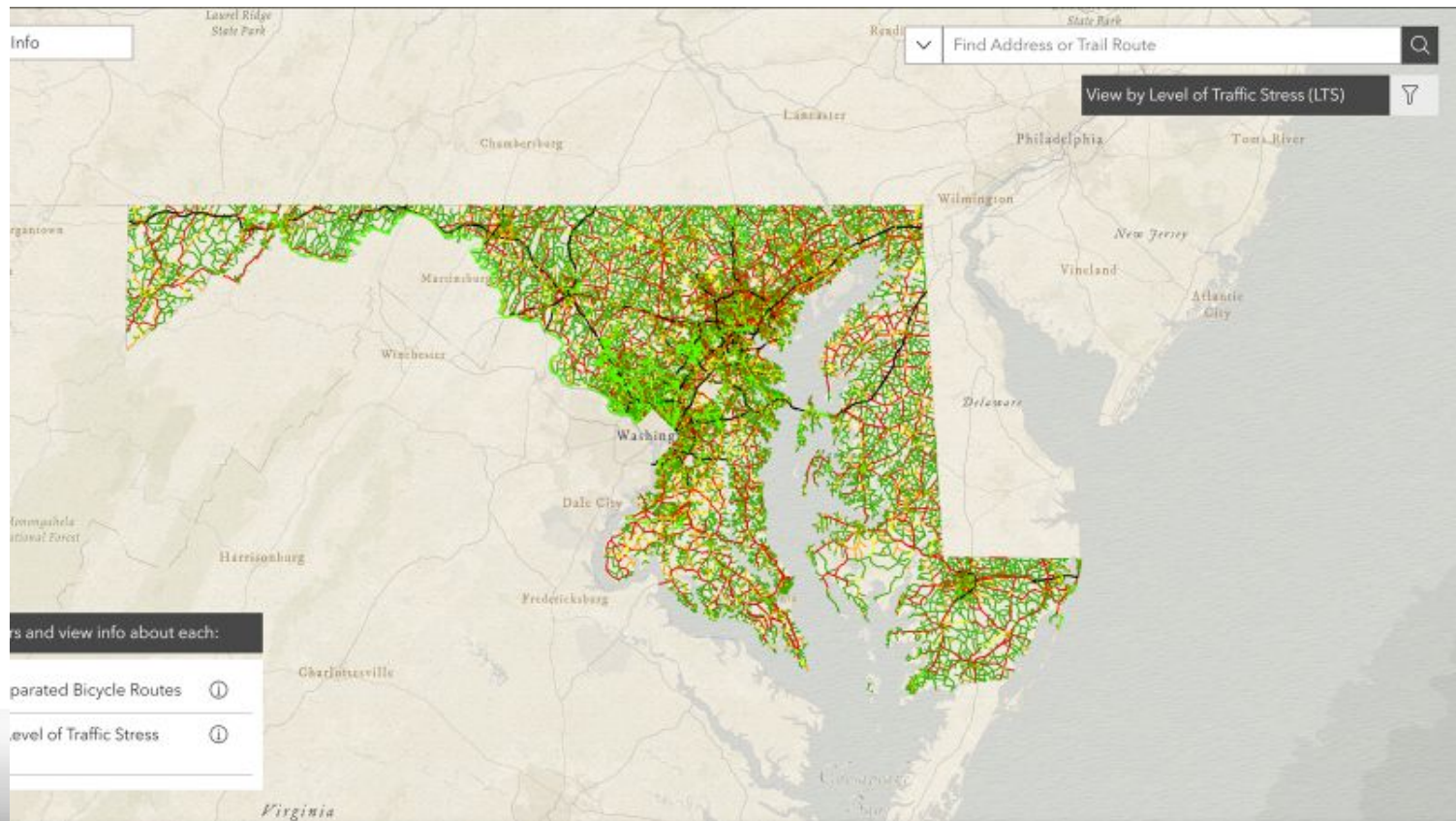
This map does not include any on-street bicycle facility including bike lanes, protected bike lanes, sharrows, and signed bike routes nor does it include any natural surface trails used for mountain biking. These routes can be used by pedestrians, but not by any motorized vehicle.

"Road Separated" indicates that these segments are physically separated from roads in which motorized vehicles travel, whether by a grass buffer, landscaping or other physically barriers. This map does not include and in many instances do not follow a motorized vehicle route network at all. The sum mileage as of July, 2021 for these routes and connectors is 1,214 miles.



When you click on portions of this map's routes, you can see additional





Roads & Highways OMOC

- Adopt-A-Highway (Complete)
- Bridge/Structures (Complete)
- Geohazards (Complete)
- Plats (Complete)
- Speed Limits (Complete)
- Access Permits (Complete)
- Bike Routes (Complete)
- Highway Needs Inventory (HNI) (Complete)
- Line Striping (Complete)
- Signals (Complete)
- Dangerous Curves (Complete)
- Crash (In Progress)
- MDTA Freeway Incident Traffic Management (FITM) Plans (In Progress)
- MSP Routes (In Progress)
- Railroad (In Progress)
- Crosswalks (In Progress)
- MTA Bus Stops (In Progress)
- MTA Bus Routes (In Progress)
- ADA (Backlog)
- Fiber (Backlog)
- Freight Routes (Backlog)
- ITS (Backlog)
- Lighting (Backlog)
- Noise Barriers (Backlog)
- Raised Pavement Markings (Backlog)
- Roadway Dedications (Backlog)
- Rumble Strips (Backlog)
- Scenic Byways (Backlog)
- Sign Inventory (Backlog)
- Sign Structure Inventory (Backlog)
- Snowplow Routes and Liquid Only Routes (Backlog)
- Speed Enforcement Zones (Backlog)
- Traffic Barriers (Backlog)

Maryland Interagency Commission on School Construction

<https://iac.mdschoolconstruction.org/>



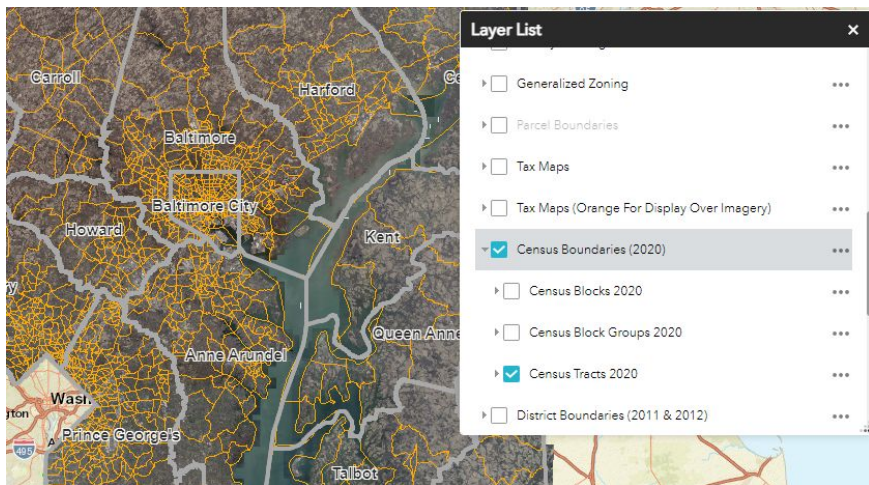
IAC

THE INTERAGENCY COMMISSION ON
SCHOOL CONSTRUCTION



Maryland Department of Planning

- 2020 Census Geographies now available on MD iMAP (Tract, Block Group, Block)
- CAMA (Computer-Assisted Mass Appraisal) Data updates now available quarterly for download from planning.maryland.gov and as a service on MD iMAP - four layers: Core, Building, Land, and SubAreas
- Upcoming releases of *MdProperty View* and *FINDER* Quantum: Anne Arundel, Montgomery, Talbot, Kent, and Dorchester



planning.maryland.gov/Pages/OurProducts/DownloadFiles.aspx

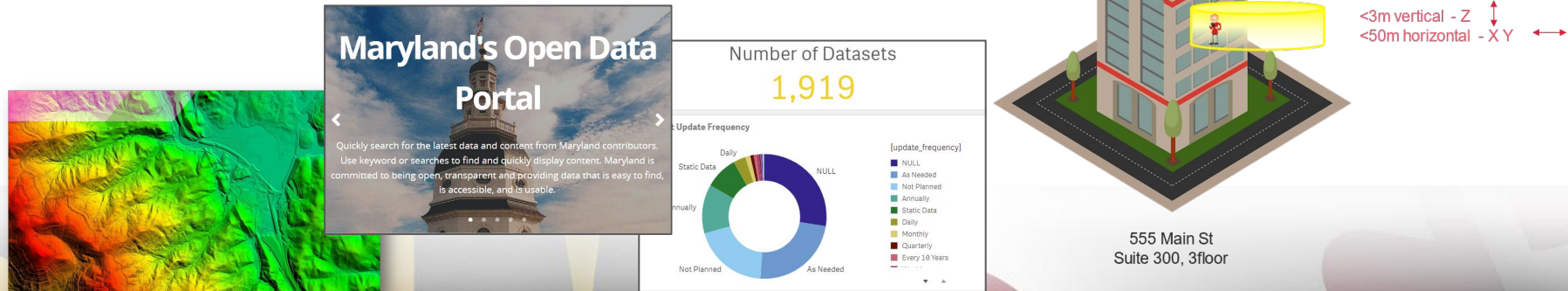
land.gov

CAMA Data

- ▶ 2022 First Quarter CAMA Core
- ▶ 2022 First Quarter CAMA Building
- ▶ 2022 First Quarter CAMA Land
- ▶ 2022 First Quarter CAMA Subareas
- ▶ 2021 Fourth Quarter CAMA Core
- ▶ 2021 Fourth Quarter CAMA Building
- ▶ 2021 Fourth Quarter CAMA Land
- ▶ 2021 Fourth Quarter CAMA Subareas
- ▶ 2020 Statewide CAMA
- ▶ 2017 CAMA Core
- ▶ 2017 CAMA Building
- ▶ 2017 CAMA Land
- ▶ 2017 CAMA Subareas

Department of IT (DoIT) - Data Services GIS/BI

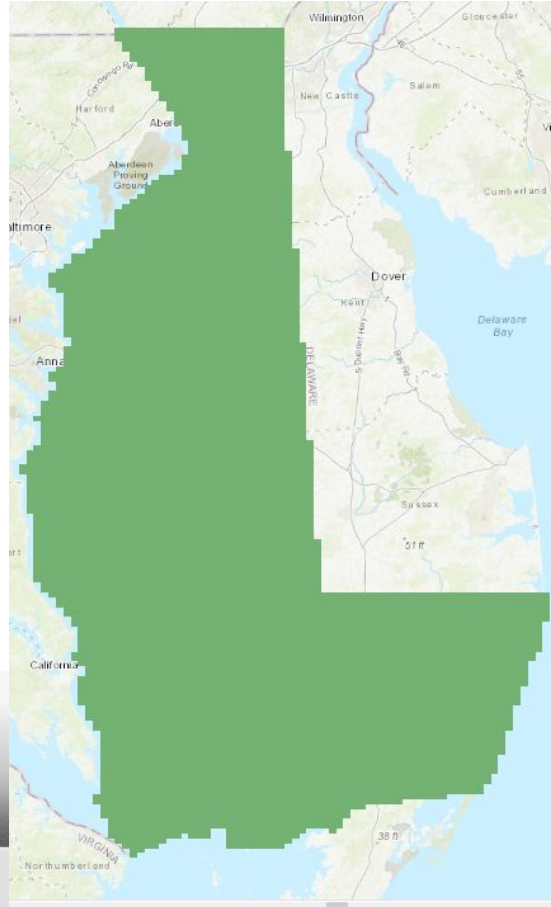
- NG911 Project - MCP / DoIT Presentation (Z-Axis for NG911) to 911 Board
- Data Freshness Initiative
- Open Data Council - Quarterly meetings



Maryland Department of Information Technology; GIS; Planning Phase

Eastern Shore
2022 Digital Six
Inch Pixel
Orthoimagery
Production Area

9 Counties and
Bay water



- Cecil
- Kent,
- Queen Anne's,
- Talbot,
- Dorchester,
- Caroline,
- Wicomico,
- Somerset,
- Worcester

Maryland Department of Information Technology; GIS; Planning Phase

Eastern Shore 2022
Digital OrthoImagery
Production Area

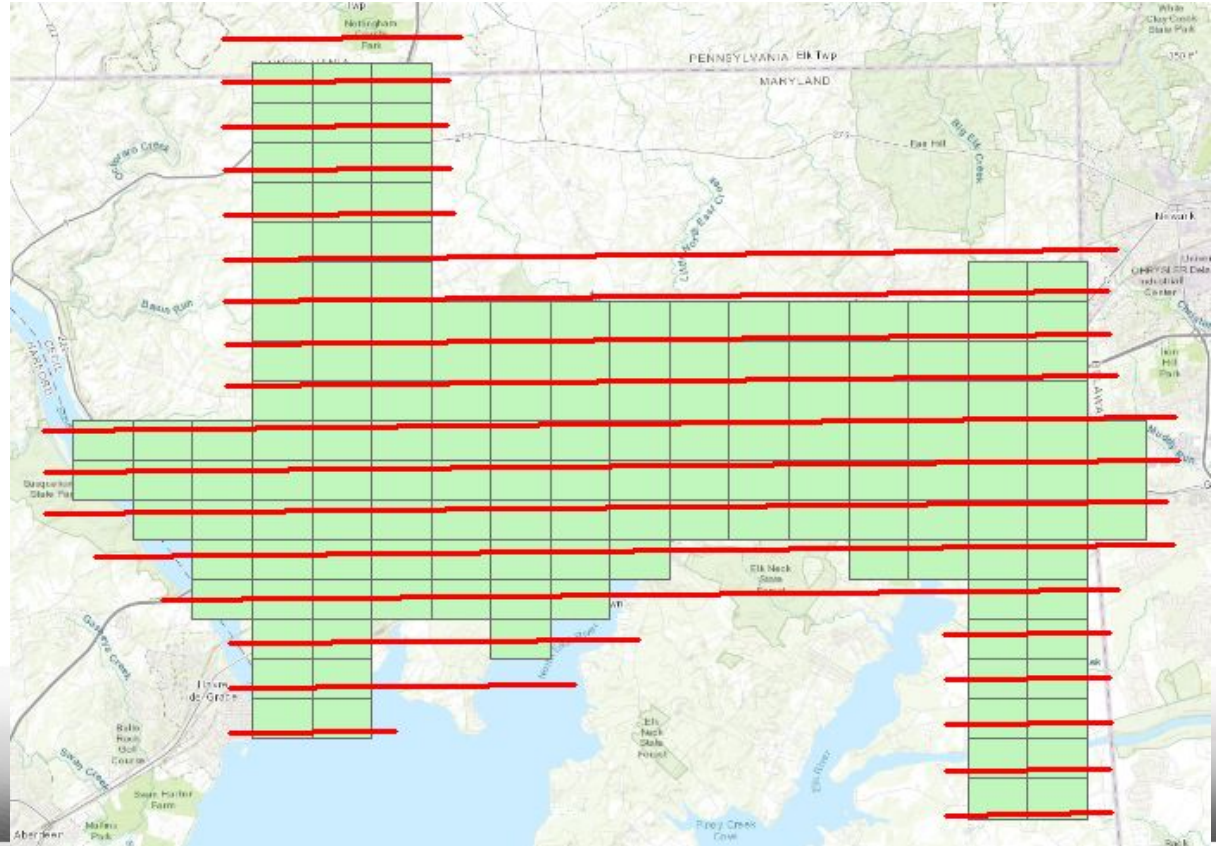
69 Total Flightlines
4,951 Total Exposures
60% Forward-lap
30% Side-lap



Maryland Department of Information Technology; GIS; Planning Phase

Cecil County 2022
3 inch Pixel Digital
OrthoImagery Production
Area

22 Total Flightlines
761 Total Exposures
60% Forward-lap
30% Side-lap



Maryland Department of Information Technology; GIS; Planning Phase

Town of Easton 2022

3 inch Pixel Digital

OrthoImagery Production

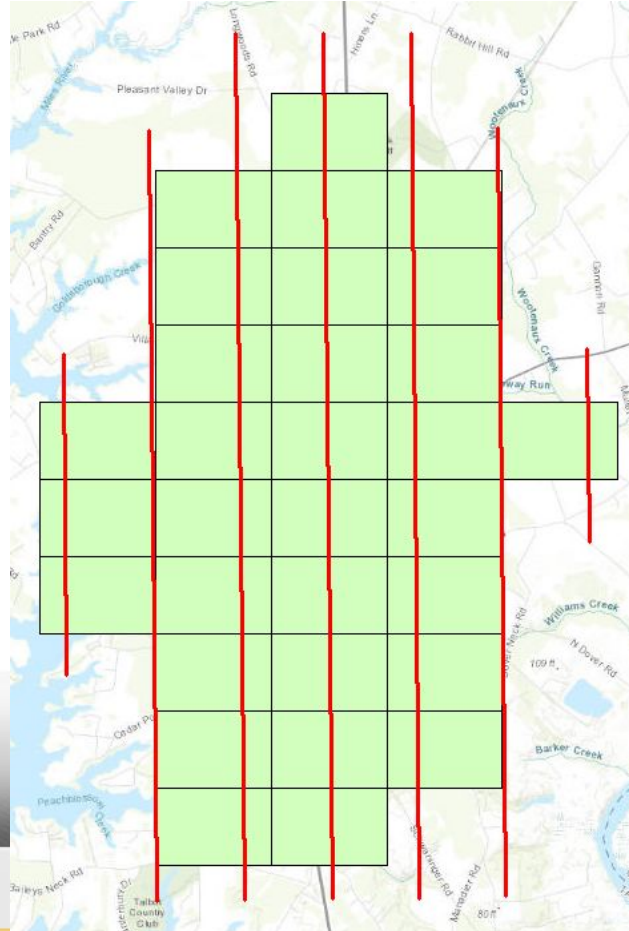
Area

7 Total Flightlines

152 Total Exposures

60% Forward-lap

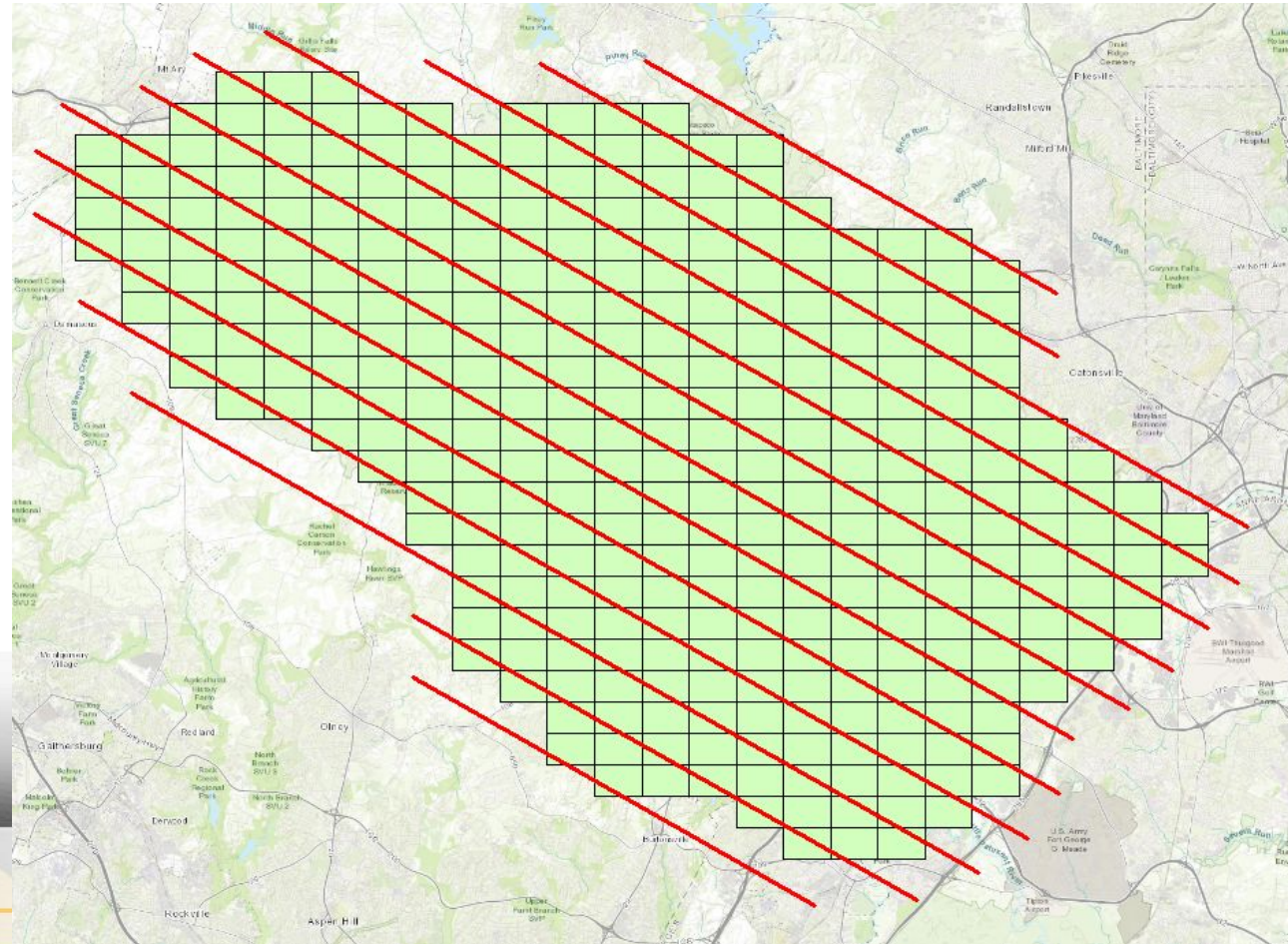
30% Side-lap



Maryland Department of Information Technology; GIS; Planning Phase

Howard County 2022
6 inch Pixel Digital
OrthoImagery Production
Area

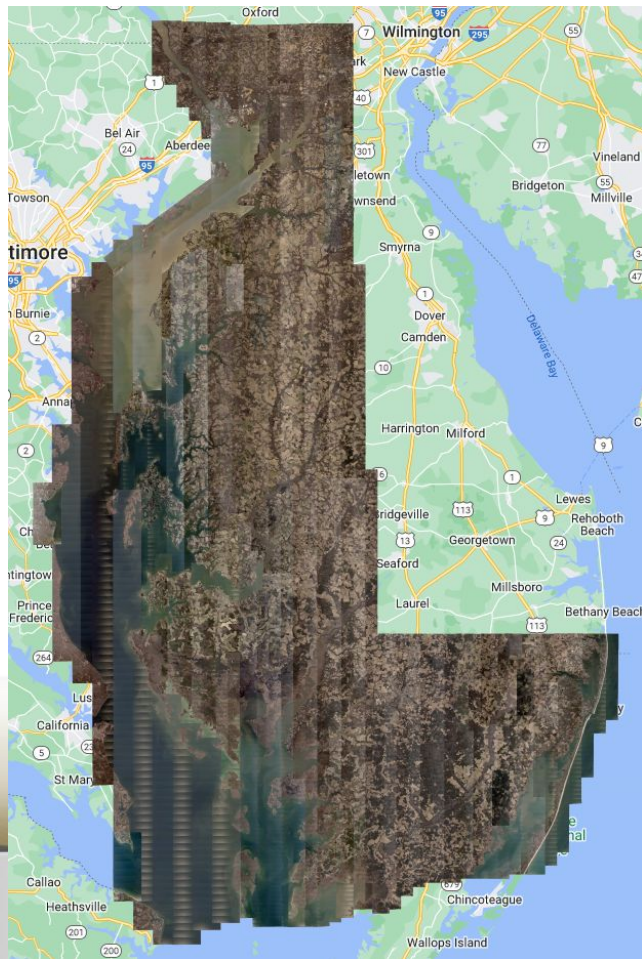
13 Total Flightlines
1,269 Total Exposures
60% Forward-lap
30% Side-lap



Maryland Department of Information Technology; GIS

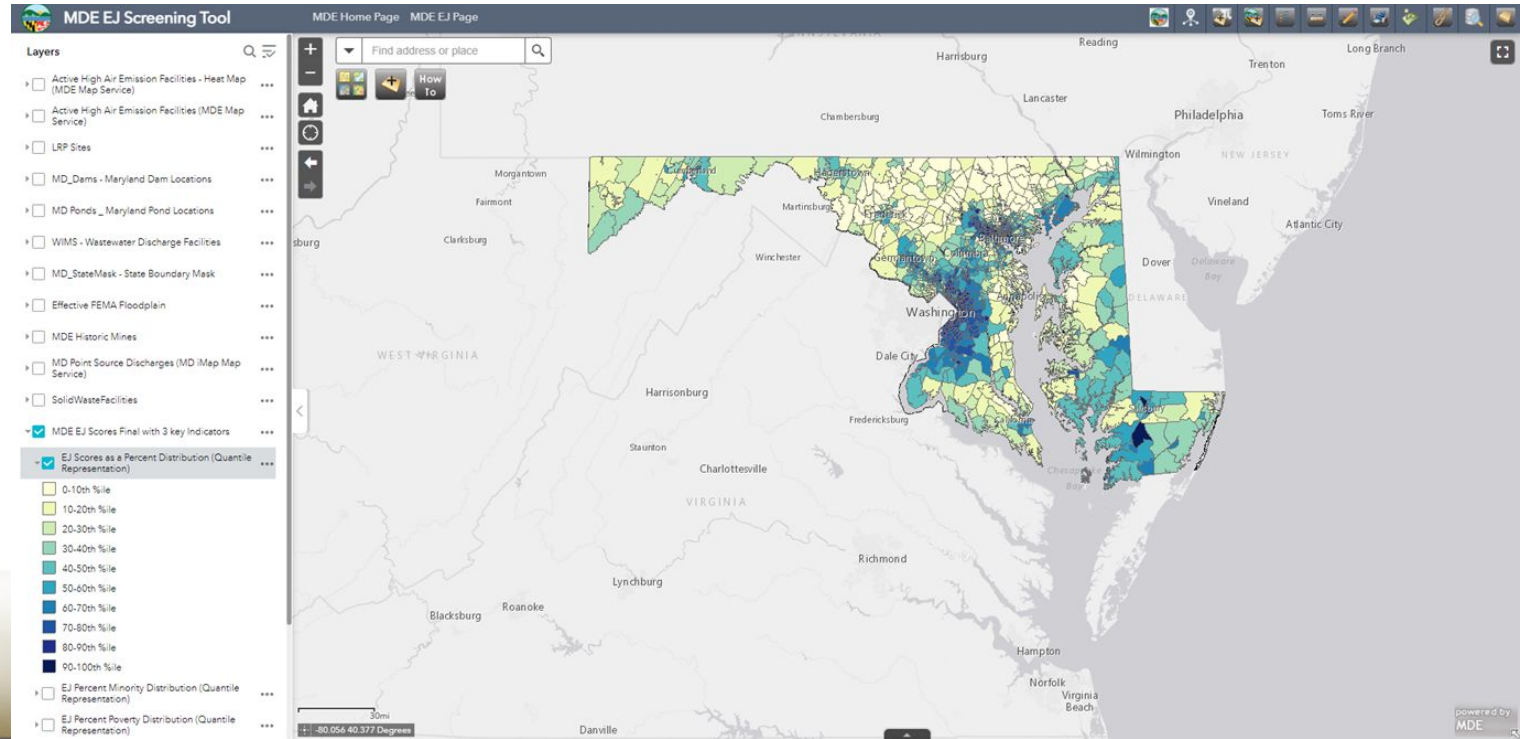
Easten Shore
2022 Digital
OrthoImagery
Production

Raw Imagery
Review



Maryland Department of the Environment (MDE);

Environmental Justice Screening Tool



Maryland Department of the Environment (MDE);

Environmental Justice Screening Tool

- >Currently MDE is developing a web mapping application that incorporates the data from the EPA, and other MD Web map services.
- >Demonstrates that MDE can use existing tools and EJ index's and indicators to overlay MDE permitting data to identify areas that are under an EJ burden.

Maryland Department of the Environment (MDE);

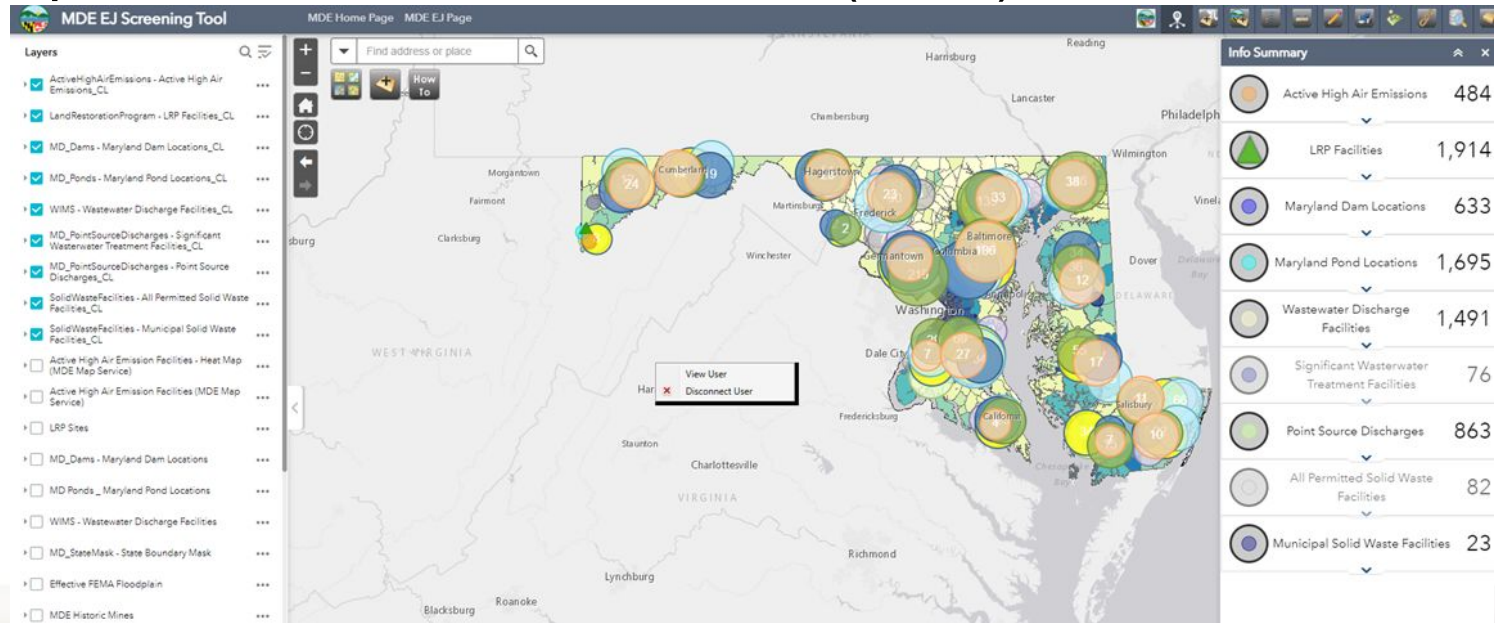
Environmental Justice Screening Tool

>MDE then looks for patterns where key permits may need additional outreach to those communities and gives our administration an visual tool to hone in on areas of concern.

>This tool is currently for internal use only. MDE is constantly enhancing the Web Mapping Application.

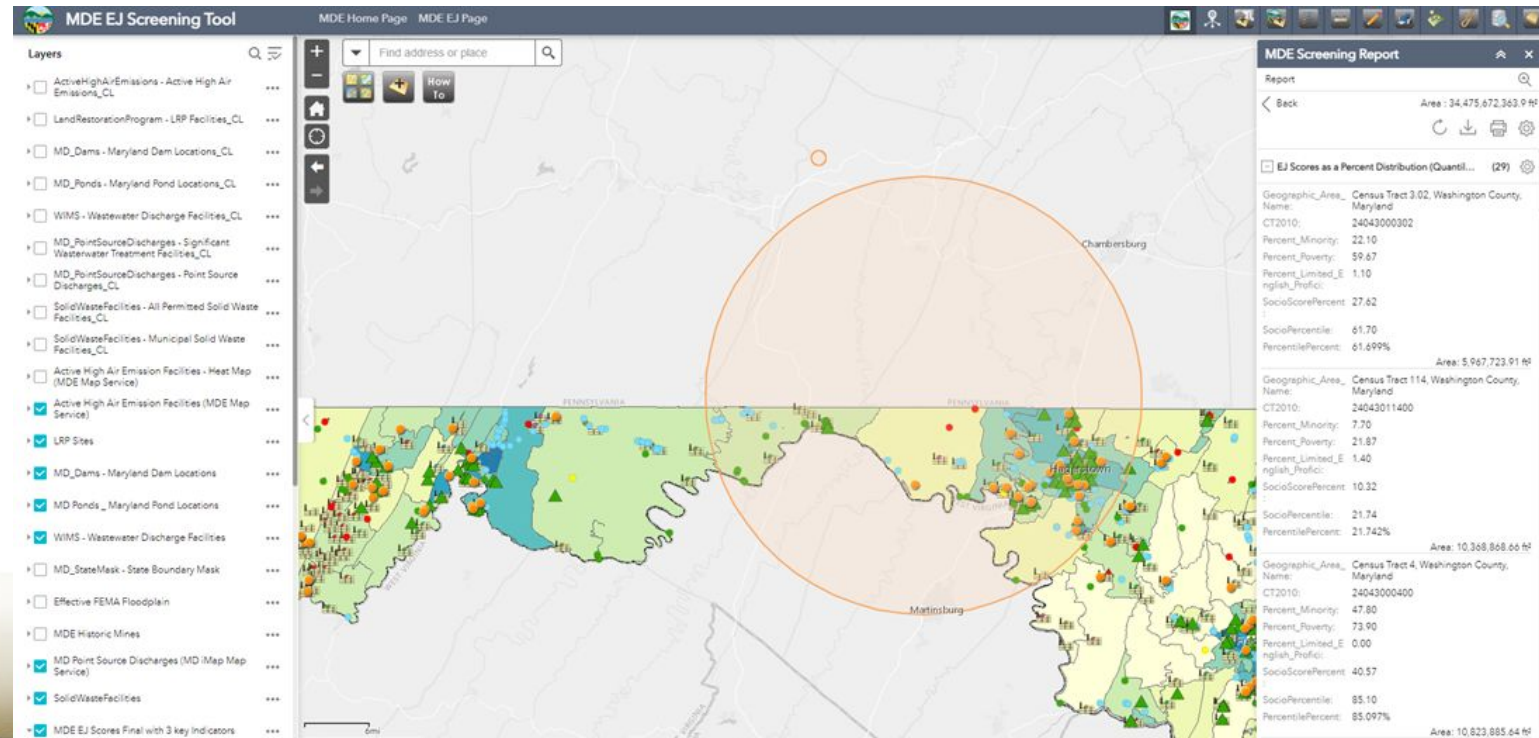
Maryland Department of the Environment (MDE);

Environmental Justice Screening Tool



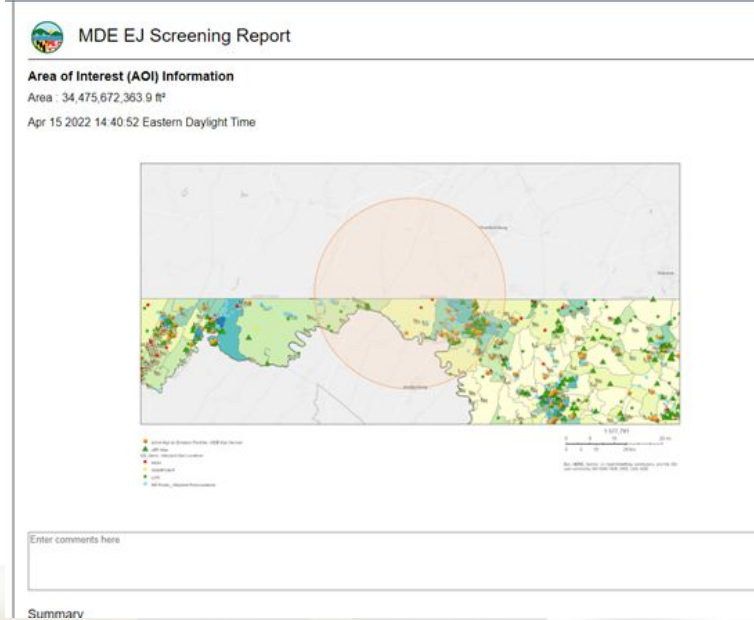
Maryland Department of the Environment (MDE);

Environmental Justice Screening Tool



Maryland Department of the Environment (MDE);

Environmental Justice Screening Tool



Summary

Name	Count	Area(ft²)	Length(ft)
EJ Scores as a Percent Distribution (Quantile Representation)	29	8,298,343,165.70	N/A
Active High Air Emission Facilities (MDE Map Service)	23	N/A	N/A
LRP Sites	49	N/A	N/A
MD Dams - Maryland Dam Locations	28	N/A	N/A
MD Ponds - Maryland Pond Locations	48	N/A	N/A
WWS - Wastewater Discharge Facilities	34	N/A	N/A
Mine	0	N/A	N/A
Mine Area	0	0	N/A
Significant Wastewater Treatment Plants	4	N/A	N/A
All Permitted Solid Waste Acceptance Facilities	1	N/A	N/A
Municipal Solid Waste Acceptance Facilities	1	N/A	N/A

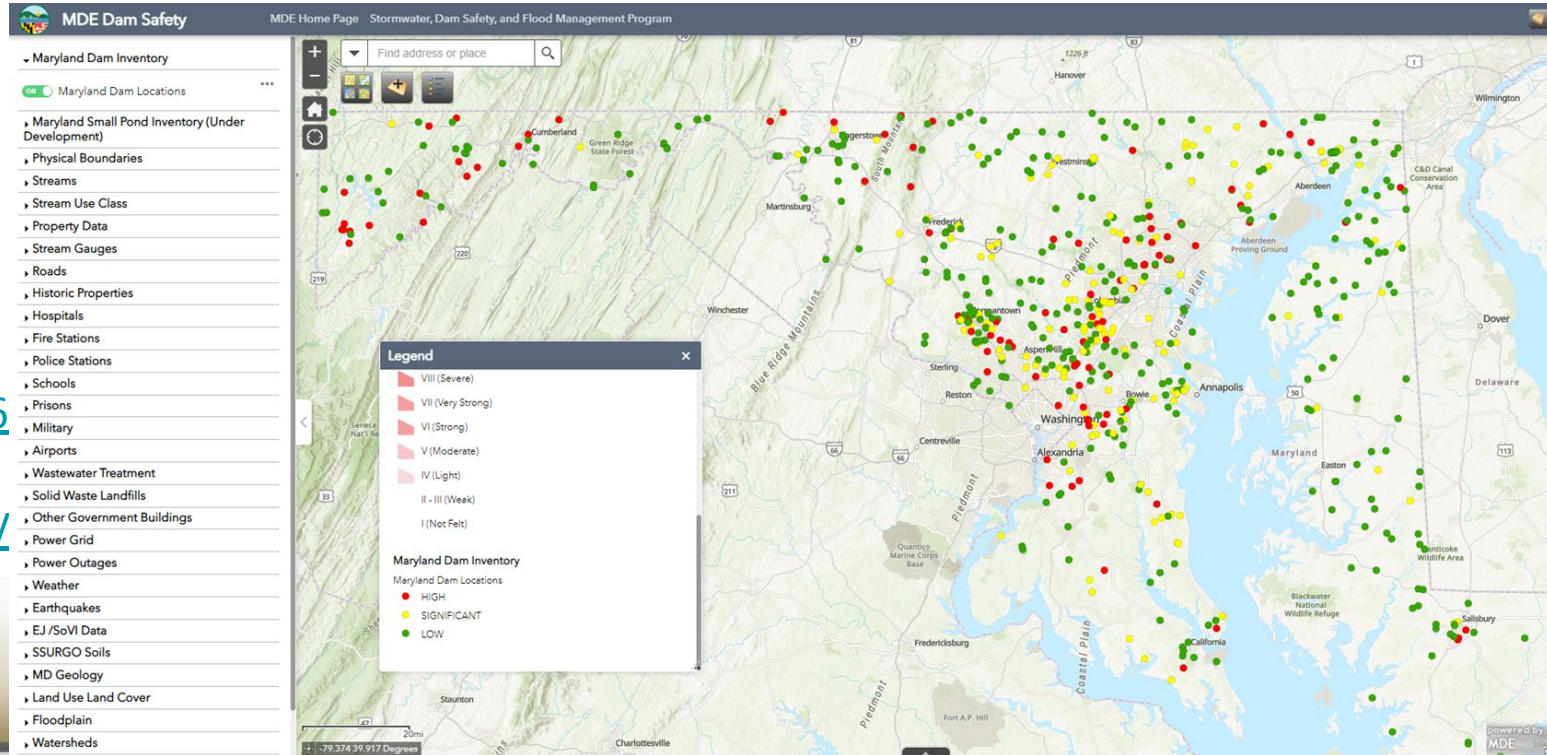
EJ Scores as a Percent Distribution (Quantile Representation)

#	Geographic Area Name	CT2010	Percent_Minority	Percent_Poverty	Percent_Limited_English_Proficient	SocioScorePercent	SocioPercentile	PercentilePercent	Area(ft²)
1	Census Tract 3.02, Washington County, Maryland	24043000302	22.10	59.67	1.10	27.62	61.70	61.699%	5,967,723.91
2	Census Tract 114, Washington County, Maryland	24043011400	7.70	21.87	1.40	10.32	21.74	21.742%	10,368,868.66
3	Census Tract 4, Washington County, Maryland	24043000400	47.80	73.90	0.00	40.57	85.10	85.097%	10,823,885.64
4	Census Tract 6, Washington County, Maryland	24043000600	26.90	58.13	0.00	28.34	62.99	62.994%	12,012,251.31
5	Census Tract 7, Washington County, Maryland	24043000700	35.50	62.23	5.10	34.28	73.94	73.938%	14,384,337.56
6	Census Tract 1, Washington County, Maryland	24043000100	13.90	25.01	0.60	13.17	30.24	30.237%	19,929,696.56
	Census Tract								

Maryland Department of the Environment (MDE);

Dam Safety Web Application

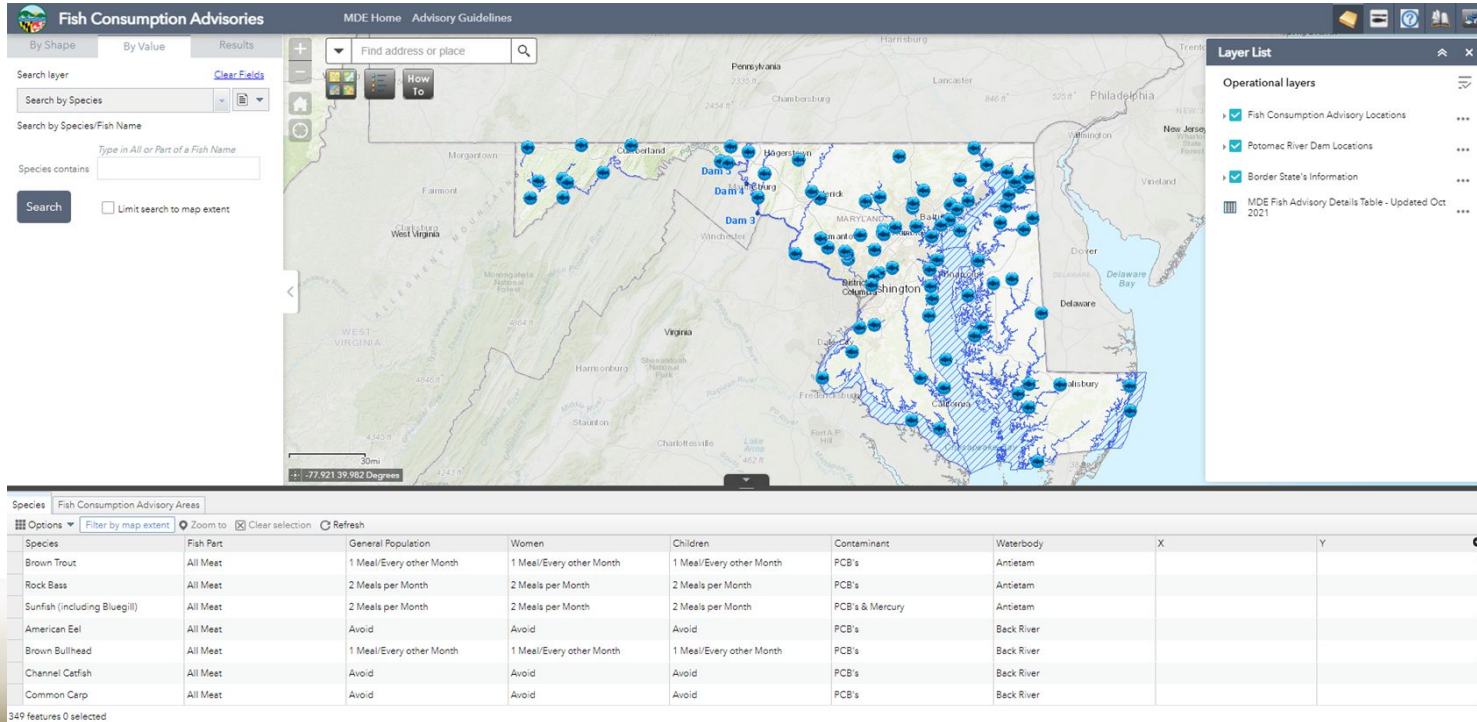
https://mdewin64.mde.state.md.us/WSA/Dams_V2/index.html



Maryland Department of the Environment (MDE);

Fish Consumption Advisories

<https://mdewin64.mde.state.md.us/WSA/FCA/index.html>

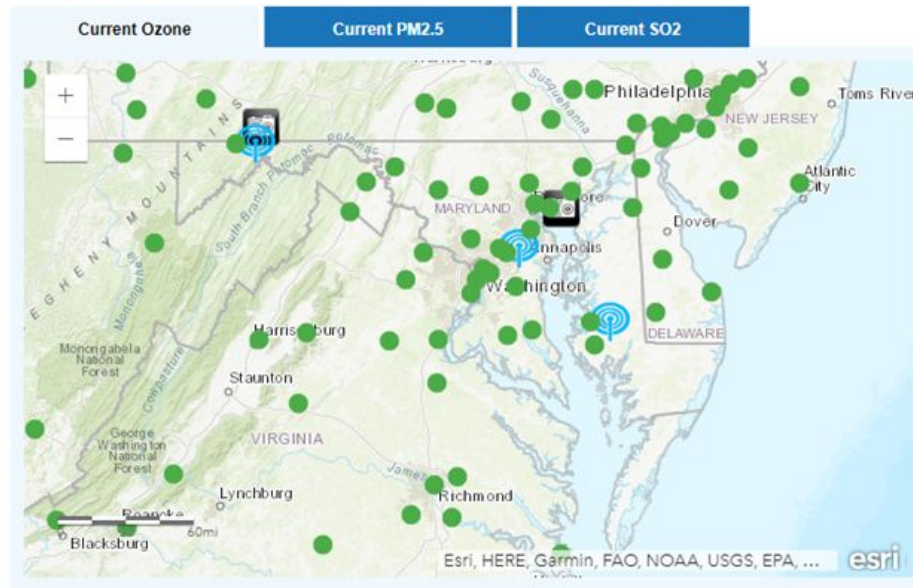


Maryland Department of the Environment (MDE);

Current Air Quality Conditions

Air Monitoring Air Quality & Forecasting

<https://mde.maryland.gov/programs/air/AirQualityMonitoring/Pages/index.aspx>

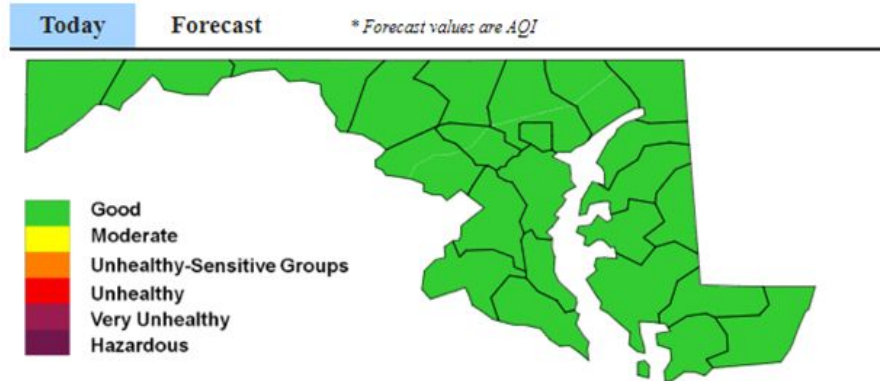


Maryland Department of the Environment (MDE);

Air Monitoring Air Quality & Forecasting

<https://mde.maryland.gov/programs/air/AirQualityMonitoring/Pages/index.aspx>

Air Quality Forecast



Air Quality Forecast Discussion

Ozone forecasting for the 2022 ozone season is underway. An active weather pattern will keep Good air quality in the forecast through the weekend. Mild conditions with moderate winds and good vertical mixing will lead to Good air quality Friday. Another mild day is expected Saturday ahead of another cold front. Increasing clouds and chances for rain within an already relatively clean atmosphere will maintain Good air quality. Cool and breezy conditions are expected Easter Sunday behind a cold front with continued Good air quality expected. Good air quality should continue into next week with weather supportive clean air. -MDE



J.B. Churchill

john.churchill@maryland.gov

John Lesko

john.leskoi@maryland.gov

THANK YOU!!