

MSGIC Summer 2022 Quarterly Meeting

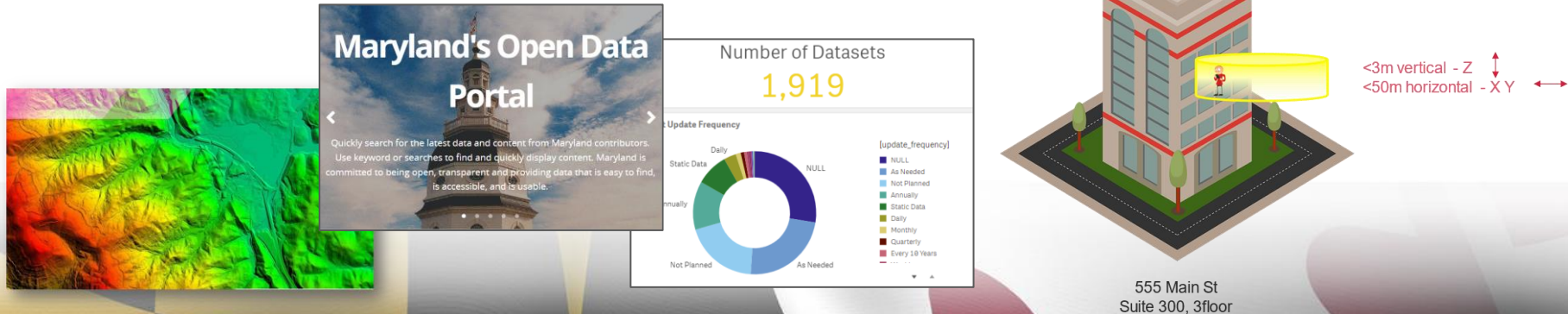
Presentation: State Caucus Update

J.B. Churchill & John Lesko (co-chairs)



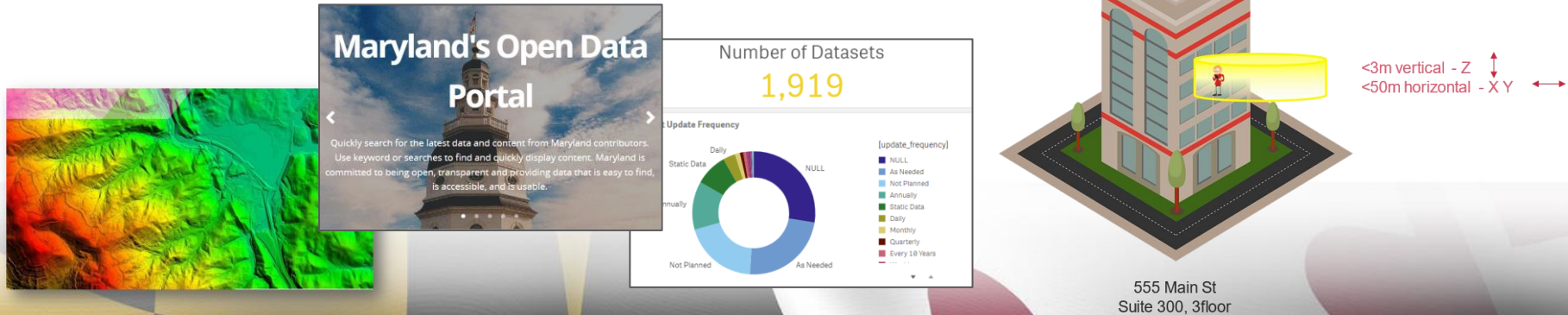
Department of IT (DoIT) - Data Services; Open Data

- Open Data - J.B. is presenting at the Baltimore Data Week conference
- Council on Open Data conference on June 17 had ~ 45 participants
<https://opendata.maryland.gov/stories/s/Council-on-Open-Data/vyny-sdaq/>
The next conference is scheduled for Friday, September 16th.
- Strategic Planning, tweaking procedures to accommodate an increasing number of users and an expanding data inventory



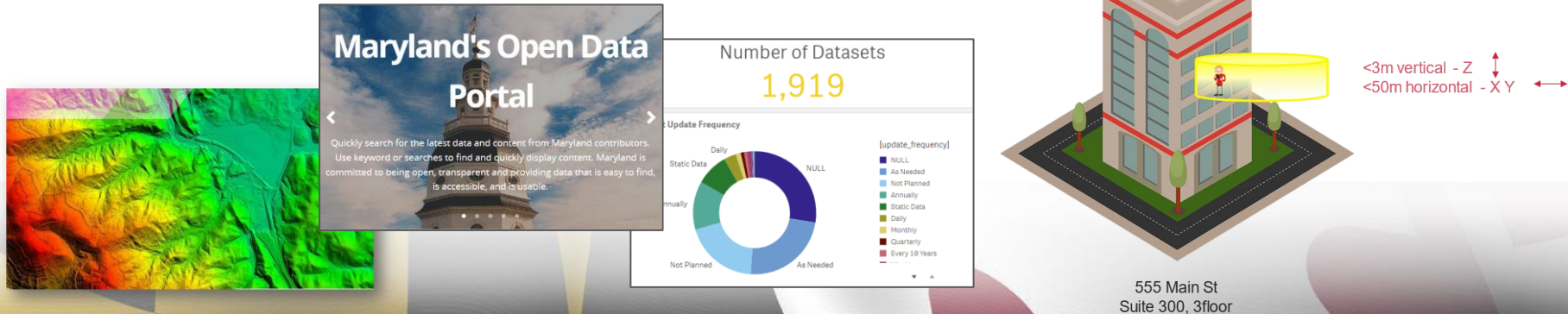
Department of IT (DoIT) - Data Services; GIS

- NG911 Project - MCP / DoIT (Z-Axis for NG911) to 911 Board continues
- Addressing and Centerline 2022 3rd Quarter Request (Lisa sent request on Monday)
Counties should submit thru <https://sftp.dbm.state.md.us/>
- MLGCA - Web map application showing Exclusion Zones, Enterprise Zones and Opportunity Zones
- Data Services participate in a “roundtable” conference for Enterprise zones with MCA and SDAT.



Department of IT (DoIT) - Data Services; BI

- DNR R3 Project (Recruitment, Retention and Reactivation Plan)
- Conducting demonstrations for agencies interested in utilizing the QLIK platform and the State SCGC (Socrata Connected Government Cloud) and the Open Data Portal



MDOT SHA GIS Program Updates

- ▶ Collaborated with MDOT TSO to publish bicycle Level-of-Traffic-Stress (LTS) derived from Esri Roads & Highways maintained data
- ▶ Traffic Control/Signal Devices data now maintained and published via Esri Roads & Highways
- ▶ Recreational Trails Program Application
- ▶ MDOT SHA Project Portal built on Esri HUB being heavily utilized for citizen information sharing
- ▶ Maryland's Road Closure Reporter continues to be utilized by local jurisdictions throughout the State for the managing and dissemination of local road closures
- ▶ MDOT SHA Climate Change Vulnerability viewer multiple layer additions
- ▶ Highway Needs Inventory (HNI) Project Mapping Application
- ▶ Pilot implementations of VUEWorks for Asset Management Office
- ▶ Cyclomedia pilot for roadway asset data extraction from existing imagery for Asset Management Office



Roads & Highways Event/Data Creation

-
- Access Permits (Complete)
 - Bike Routes (Complete)
 - Bridge/Structures (Complete)
 - Critical Routes (Complete)
 - Crosswalks (Complete)
 - Dangerous Curves (Complete)
 - Geohazards (Complete)
 - Highway Needs Inventory (HNI) (Complete)
 - Line Striping (Complete)
 - Plats (Complete)
 - Signals (Complete)
 - Speed Limits (Complete)
 - ADA (In Progress)
 - Adopt-A-Highway (In Progress)
 - Crash (In Progress)
 - MDTA Freeway Incident Traffic Management (FITM) Plans (In Progress)
 - MSP Routes (In Progress)



Roads & Highways Event/Data Creation

- MTA Bus Stops [\(In Progress\)](#)
- MTA Bus Routes [\(In Progress\)](#)
- Railroad [\(In Progress\)](#)
- Scenic Byways [\(In Progress\)](#)
- Fiber [\(Backlog\)](#)
- Freight Routes [\(Backlog\)](#)
- ITS [\(Backlog\)](#)
- Lighting [\(Backlog\)](#)
- Noise Barriers [\(Backlog\)](#)
- Roadway Dedications [\(Backlog\)](#)
- Raised Pavement Markings [\(Backlog\)](#)
- Rumble Strips [\(Backlog\)](#)
- Sign Inventory [\(Backlog\)](#)
- Sign Structure Inventory [\(Backlog\)](#)
- Snowplow Routes and Liquid Only Routes [\(Backlog\)](#)
- Speed Enforcement Zones [\(Backlog\)](#)
- Traffic Barriers [\(Backlog\)](#)



Local Centerline Automated Conflation

-
- ▶ Working with 1Spatial and their 1Integrate Solution
 - ▶ Automated change detection of spatial and tabular data
 - ▶ Conflation of local road centerline data to MDOT SHA's road centerline
 - ▶ Phase 1 Deliverables:
 - ▶ A layer containing the road differences for the sample counties in a schema required for downstream integration through MDOT SHA's route and jurisdictional event creation process.
 - ▶ A layer containing reports where road differences are within tolerance of snap to but not snapped.
 - ▶ Phase 2 Deliverables:
 - ▶ Configuration document (updated from Phase 1)
 - ▶ 1Integrate rules configured in such a way that MDOT SHA can complete individual counties as they're onboarded to the local data integration program.
 - ▶ System Architecture Recommendations document (updated from Phase 1)



Western Maryland GIS Users Group

-
- ▶ On Friday June 24, 2022 MDOT/SHA with WBCM did a presentation on “SHA Storm Water Management inspection by Drone”.
 - ▶ Kiona Leah and Matt Horowitz discussed planning the missions, acquiring the imagery and analyzing the results.
 - ▶ Matt talked about the preparation and restrictions he needed to consider for operating the drone.
 - ▶ In the process of generating a SOP for future operations.

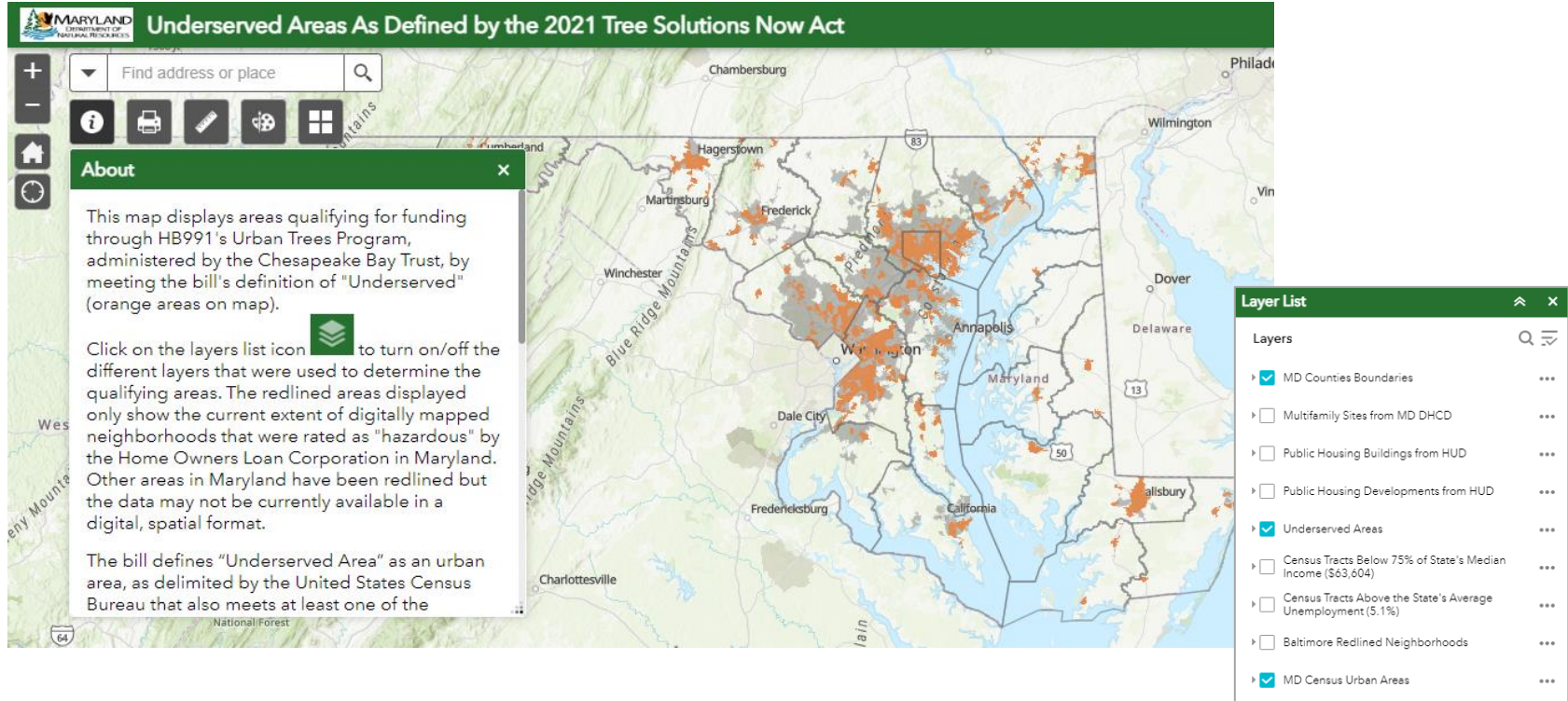


Underserved Areas As Defined by the 2021 Tree Solutions Now Act Map (HB991)

- Plant 5 million trees by 2031
 - Additional to Maryland's tree planting requirements from the Greenhouse Gas Reduction Act
- 10% (500,000) of the trees must be within urban, underserved areas
 - A census designated urban area that meets at least one of the following criteria
 - A neighborhood that was, at any point in time, redlined or graded as “hazardous” by the Home Owners’ Loan Corporation;
 - A census tract with an average rate of unemployment for the most recent 24–month period for which data are available that exceeds the average rate of unemployment for the state;
 - A census tract with a median household income for the most recent 24–month period for which data are available that is equal to or less than 75% of the median household income for the state during that period; or
 - A housing project as defined in § 12–101 of the housing and community development article.



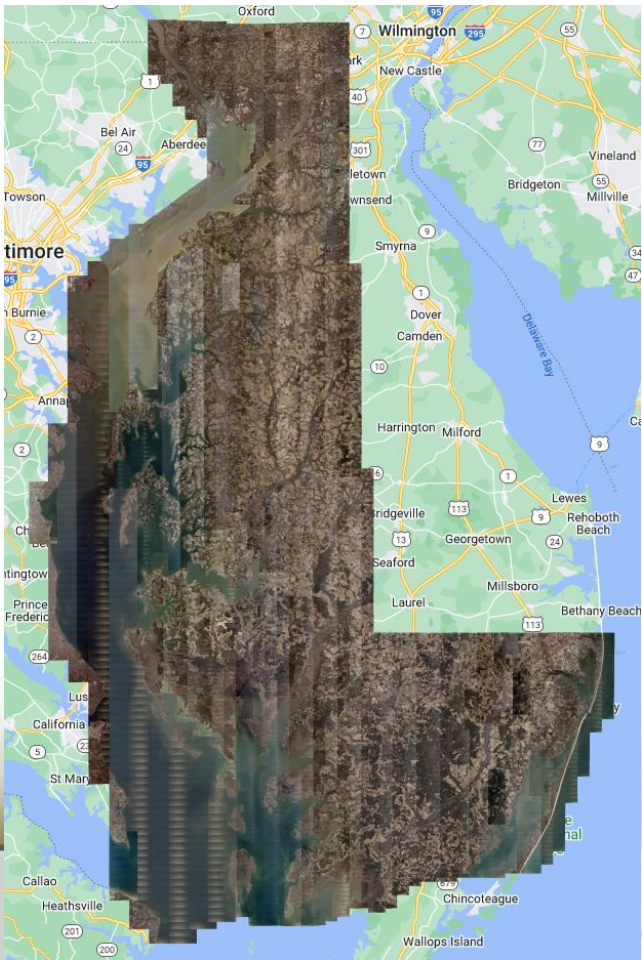
Underserved Areas As Defined by the 2021 Tree Solutions Now Act



Maryland Department of Information Technology; GIS

Easten Shore
2022 Digital
OrthoImagery
Production

Raw Imagery
Review



Maryland Department of Information Technology; GIS; Pilot Phase

Eastern Shore
2022 Digital
Three Inch Pixel
Orthoimagery
Pilot Area
(Cecil County)



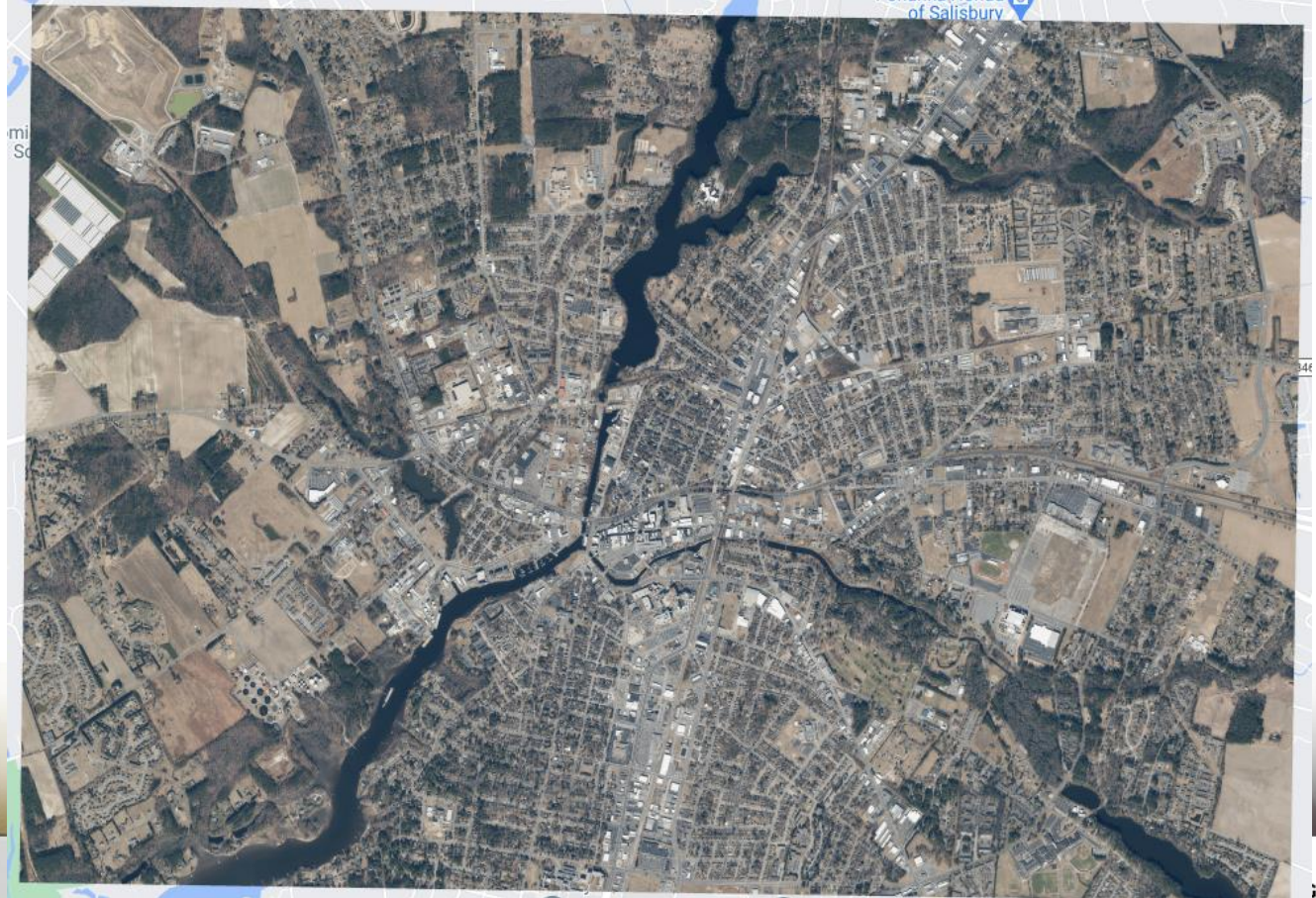
Maryland Department of Information Technology; GIS; Pilot Phase

Eastern Shore
2022 Digital Six
Inch Pixel
Orthoimagery
Pilot Area
(Cecil County)



Maryland Department of Information Technology; GIS; Pilot Phase

Eastern Shore
2022 Digital Six
Inch Pixel
Orthoimagery Pilot
Area
(Salisbury,
Wicomico County)



Maryland Department of Information Technology; GIS; Pilot Phase

Eastern Shore
2022 Digital Six
Inch Pixel
Orthoimagery Pilot
Area
(Cecil County)



Maryland Department of Information Technology; GIS; Pilot Phase

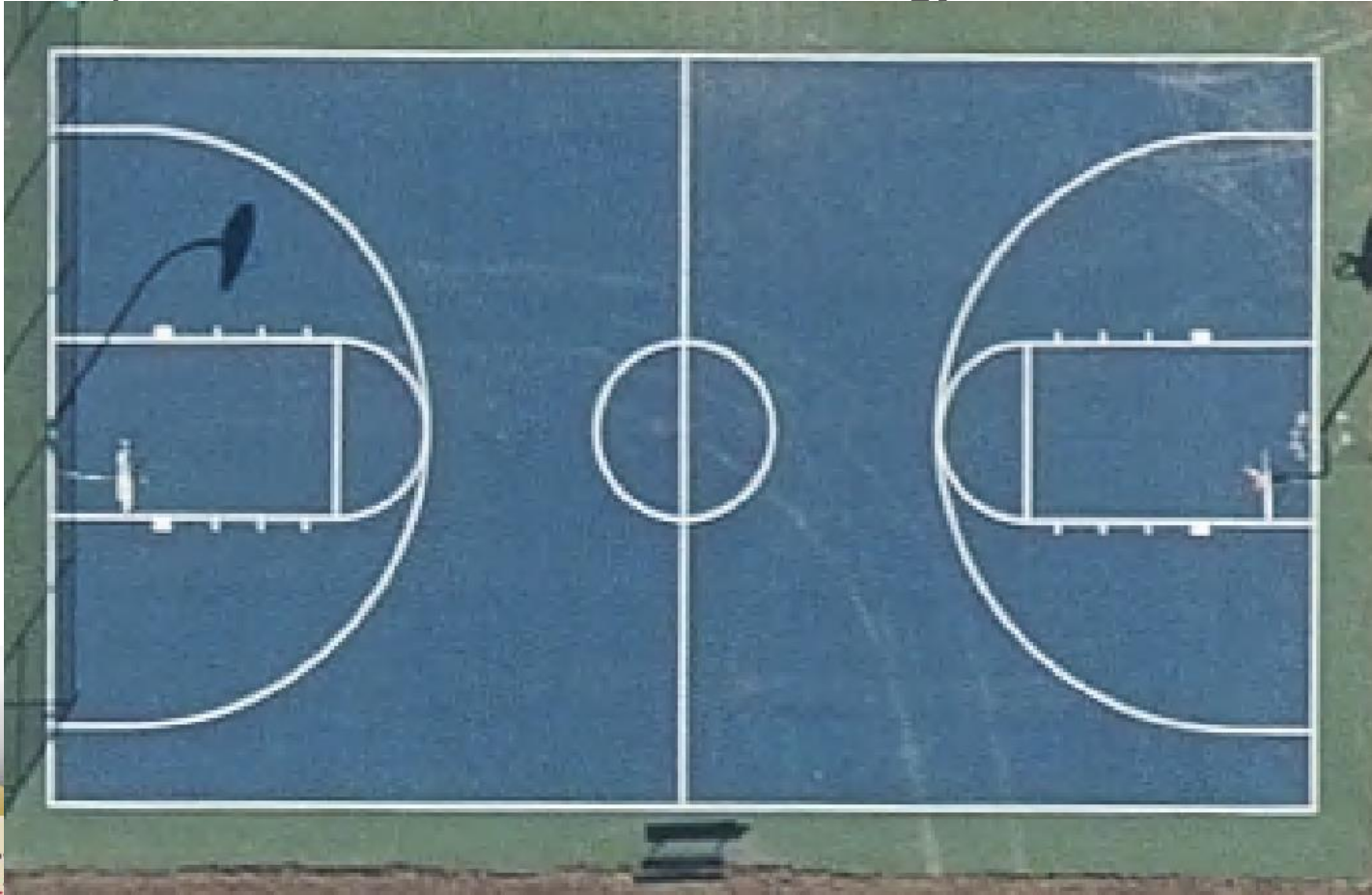
Eastern Shore
2022 Digital Three
Inch Pixel
Orthoimagery Pilot
Area
(Cecil County)



Maryland Department of Information Technology; GIS; Pilot Phase



Maryland Department of Information Technology; GIS; Pilot Phase



Maryland Department of Information Technology; GIS; Pilot Phase



Maryland Department of Information Technology; GIS; Pilot Phase



DOIT.MARYLAND.GOV

ance Schine | Deputy Secretary



J.B. Churchill

john.churchill@maryland.gov

John Lesko

john.leskoi@maryland.gov

THANK YOU!!