

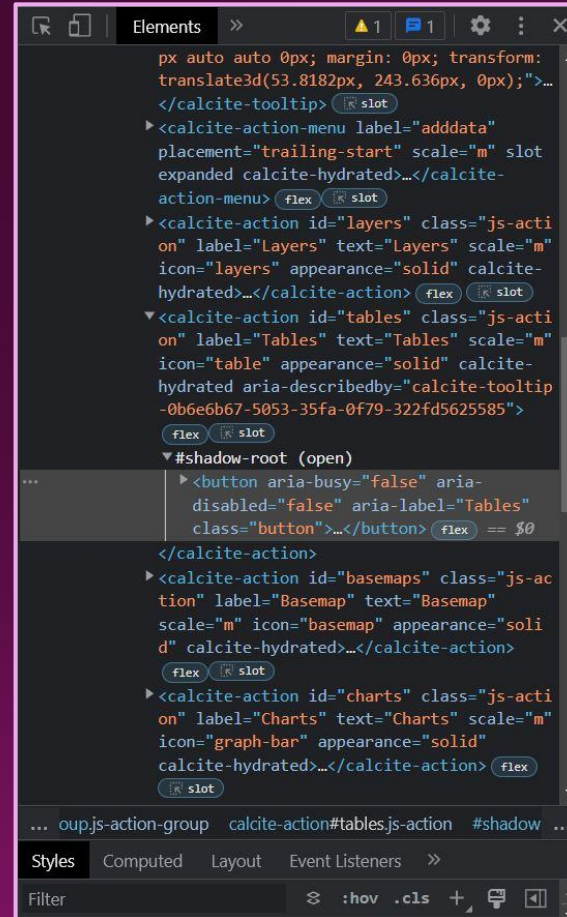


Provided by MDOD IT Access Initiative

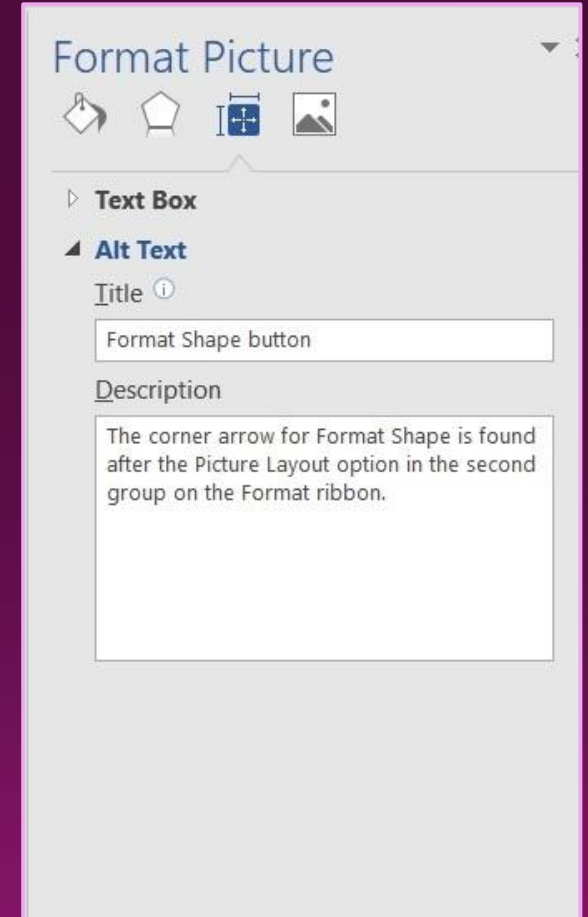
# Digital Mapping Accessibility

# Basics of Web Accessibility

- Alt text
- Keyboard access
- Headings and navigation
- Field labels
- Link descriptions
- Reading order
- Focus indicator



```
px auto auto 0px; margin: 0px; transform:
translate3d(53.8182px, 243.636px, 0px);">...
</calcite-tooltip>
<calcite-action-menu label="adddata"
placement="trailing-start" scale="m" slot
expanded calcite-hydrated>...</calcite-
action-menu>
<calcite-action id="layers" class="js-acti
on" label="Layers" text="Layers" scale="m"
icon="layers" appearance="solid" calcite-
hydrated>...</calcite-action>
<calcite-action id="tables" class="js-acti
on" label="Tables" text="Tables" scale="m"
icon="table" appearance="solid" calcite-
hydrated aria-describedby="calcite-tooltip
-0b6e6b67-5053-35fa-0f79-322fd5625585">
</calcite-action>
<button aria-busy="false" aria-
disabled="false" aria-label="Tables"
class="button">...</button>
</calcite-action>
<calcite-action id="basemaps" class="js-ac
tion" label="Basemap" text="Basemap"
scale="m" icon="basemap" appearance="solid"
calcite-hydrated>...</calcite-action>
<calcite-action id="charts" class="js-acti
on" label="Charts" text="Charts" scale="m"
icon="graph-bar" appearance="solid"
calcite-hydrated>...</calcite-action>
```



## Format Picture

**Text Box**

**Alt Text**

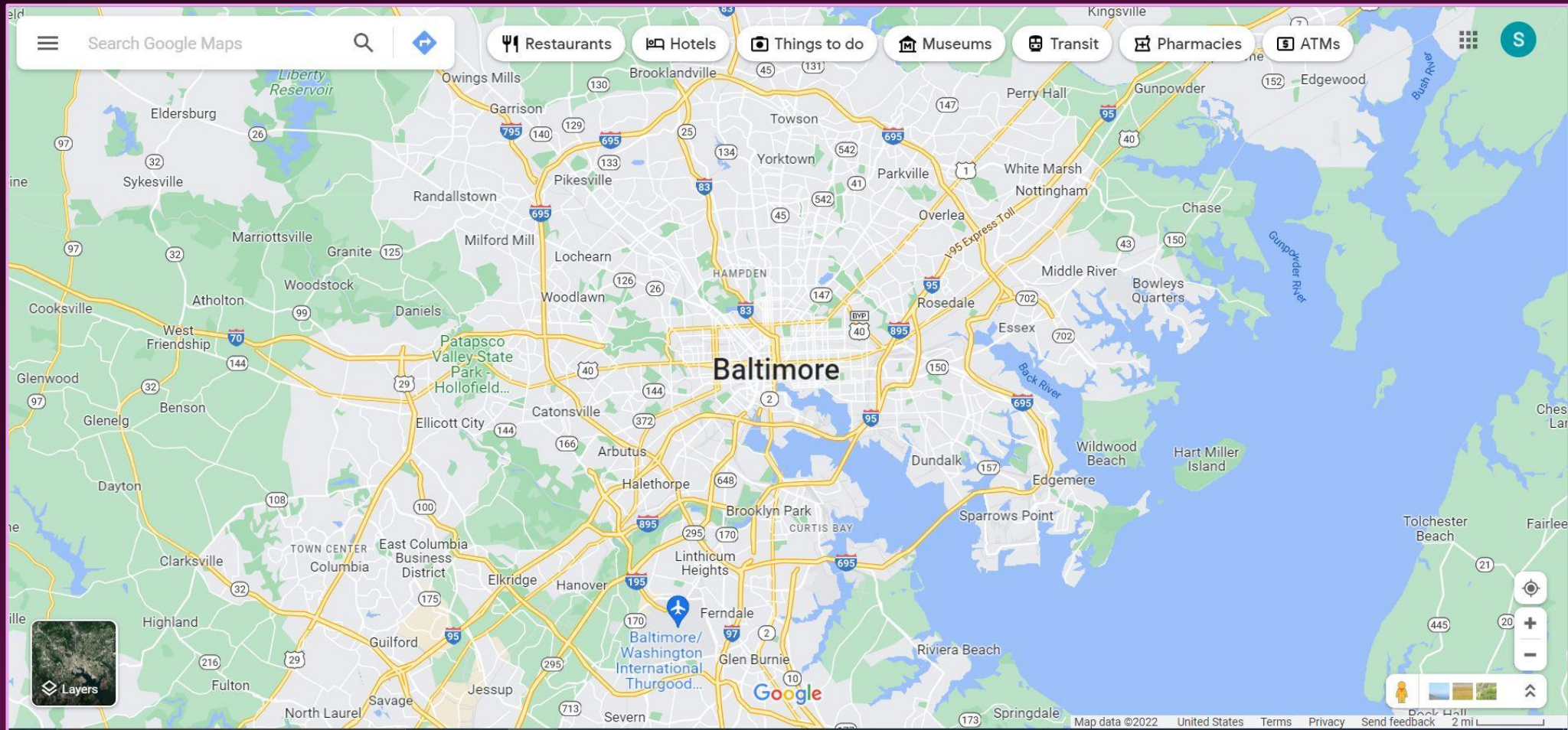
Title

Format Shape button

Description

The corner arrow for Format Shape is found after the Picture Layout option in the second group on the Format ribbon.

# Mapping Applications



Source: Google Maps

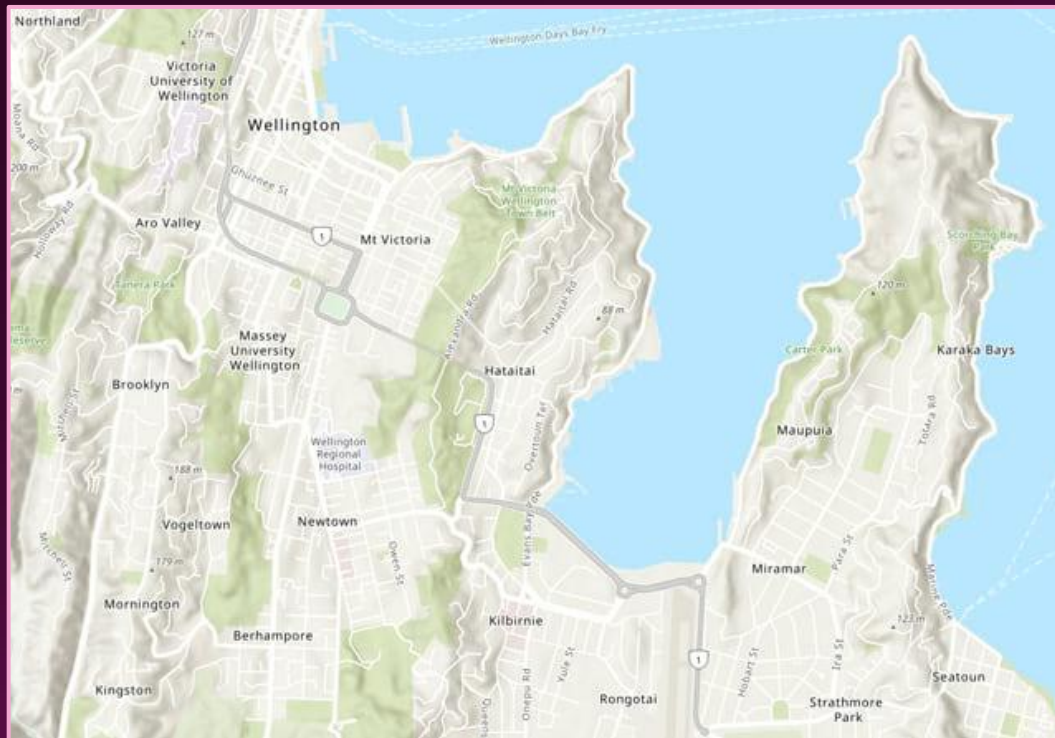
# General Rules of Thumb

- What are you conveying through this map?
  - Can an alternative like a table be used?
- Keep it simple; remove extraneous info
- Check color contrast for text and symbols (4.5:1)
- Use “real” text when possible
- Check TAB order
  - Can you reach every button without the mouse?

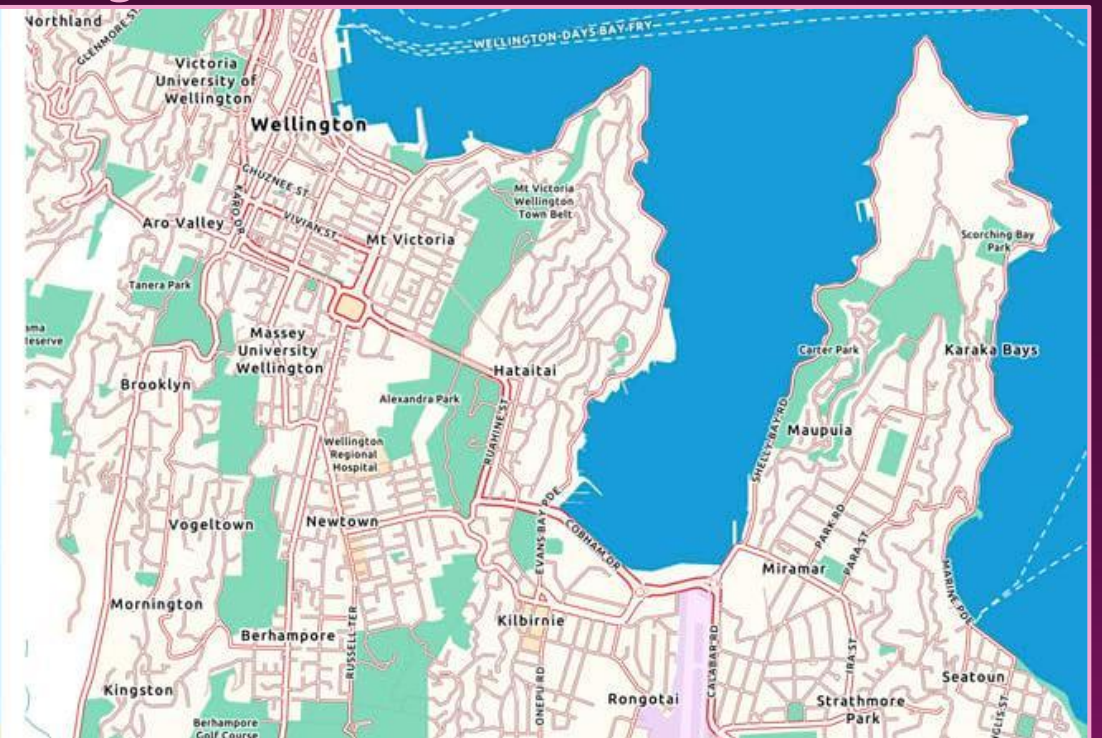


# Color Contrast

Low Contrast



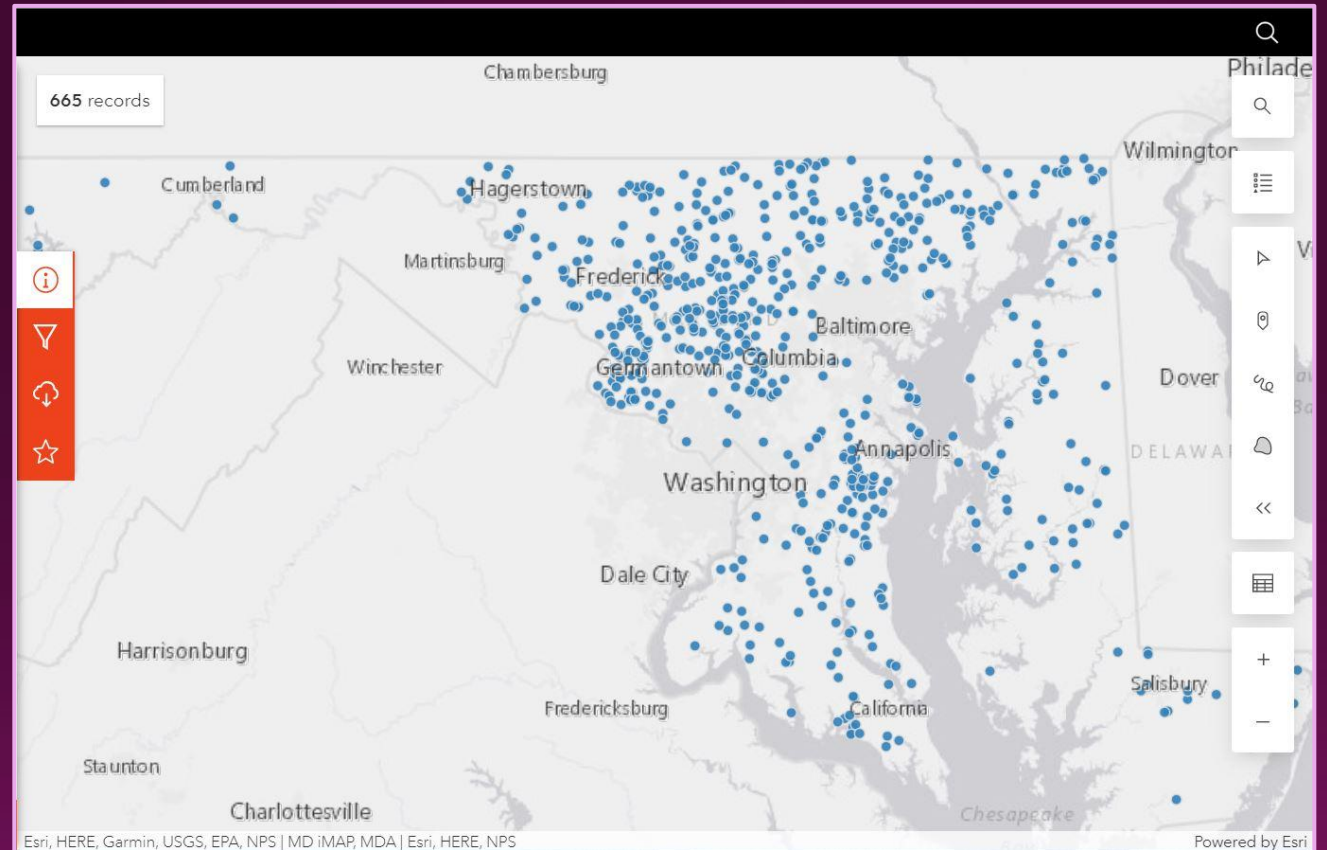
High Contrast



Source: [ESRI Accessible Basemap article](#)

# Simplicity and Function

- Use an accessible basemap
- Avoid stylizing text
- Limit use of patterns
- Don't stack textures
- Keep maps to a maximum number of styles (6-7)



# Navigation

- Headings, landmarks, and shortcuts
- Logical flow (control → search → results)
  - Enforce keyboard access
- Skip unnecessary elements (background basemap)
- Provide labels and accessible tooltips

# Accessible Alternatives

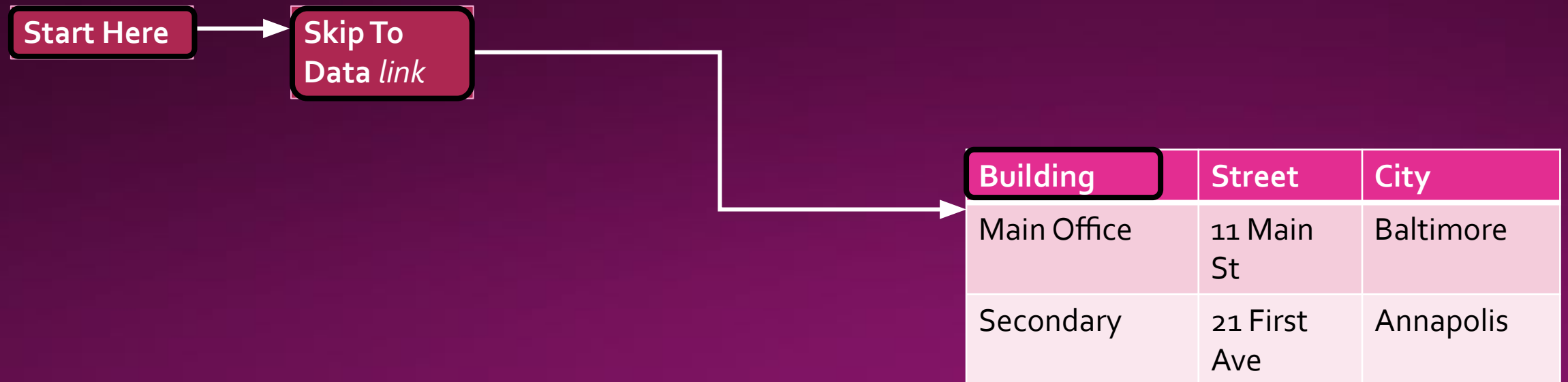
- Lists
  - Simple, easy to add
  - Search function ability
- Tables
  - Heading row (column if possible)
  - Maintains data references

| Building    | Street           | City      | State | Zip   |
|-------------|------------------|-----------|-------|-------|
| Main Office | 11 Main St       | Baltimore | MD    | 21201 |
| Secondary   | 21 First Ave     | Annapolis | MD    | 21401 |
| IT Desk     | 31 Home Drive    | Frederick | MD    | 21701 |
| State Park  | 41 Nature's Lane | Salisbury | MD    | 21801 |



# Routing Users

- Bypass links (“Skip to Data” or “Skip to Controls”)
- Organize reading order to put accessible information first
- Provide an alert on page load that explains shortcuts
- Add extra buttons for these tools to the main menu



# Talk Through It

- First Example: National Park Service Trails
- Second Example: Maryland Licensed Animal Plant Facilities
- (Explain good methods of contrast and or text)
- (Point out navigational challenges for keyboard/SR)
- (Talk about other issues that arise)

# Final Thoughts

## Checklist

- Keep it simple
- Offer alternatives
- Check your color scheme
- Test with keyboard

## Contact & Resources

- Email: [mdod.nva@Maryland.gov](mailto:mdod.nva@Maryland.gov)
- [MDOD Website](#)
- [Minnesota IT Services](#)
- [Esri Accessibility Services](#)